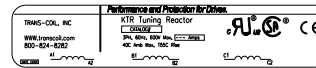
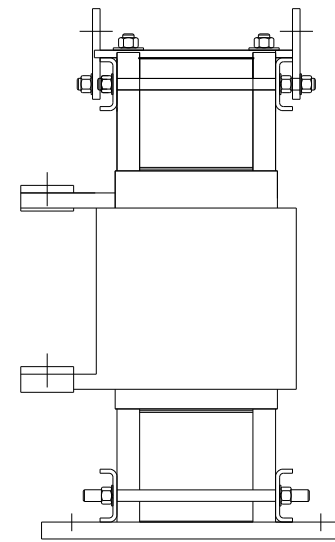
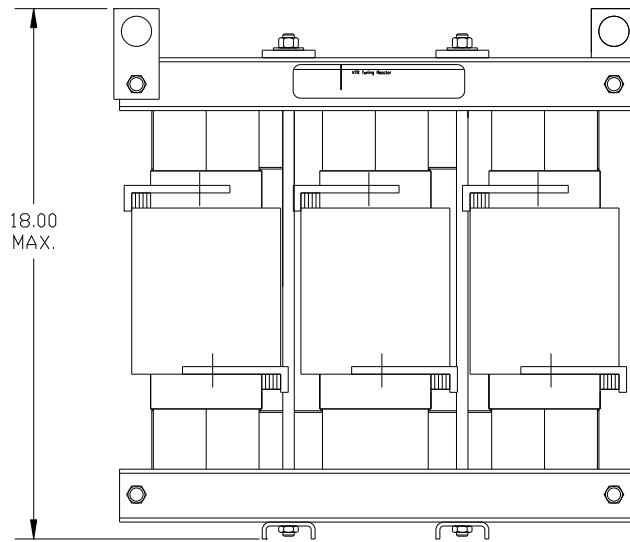



CATALOG NO	__mH <sup>+8%</sup> / <sub>-2%</sub>	__AMPS(A)	APPROX WT-LBS
KTR150C65HG	.288	230	285



.53 DIA HOLE  
6 PLACES.



TCL, LLC CLAIMS PROPRIETARY RIGHTS IN THE MATERIAL HEREIN DISCLOSED. IT IS SUPPLIED WITHOUT PREJUDICE TO ANY PATENT RIGHTS OF TCL AND MAY NOT BE REPRODUCED OR USED TO MANUFACTURE ANYTHING SHOWN THEREIN WITHOUT WRITTEN PERMISSION FROM TCL.					TOLERANCES (EXCEPT AS NOTED): DECIMAL	 W132 N10611 Grant Drive Germantown, WI 53022	
					.XX ± .03 .XXX ± .01		
						FRACTIONAL ± 1/32	TRAP REACTOR KTR150C65HG, 450/500HP
	B 2661	ADD CE TO LABEL	3/08/10	DSW		ANGULAR ± 1/2°	DRN BY DSW DATE 05/04/05 DWG. NO. 102669DG SCALE TO FIT SIZE B
	NO	REVISION	DATE	BY			SHT. 1 OF 1