

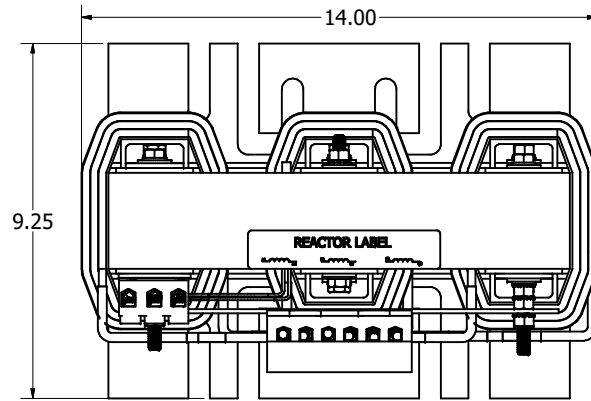
4

3

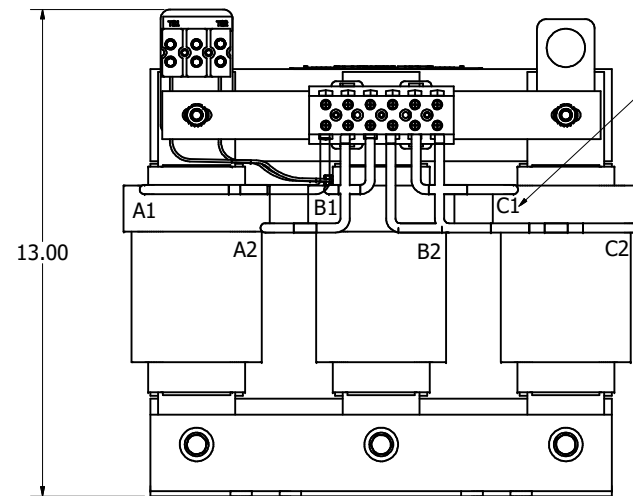
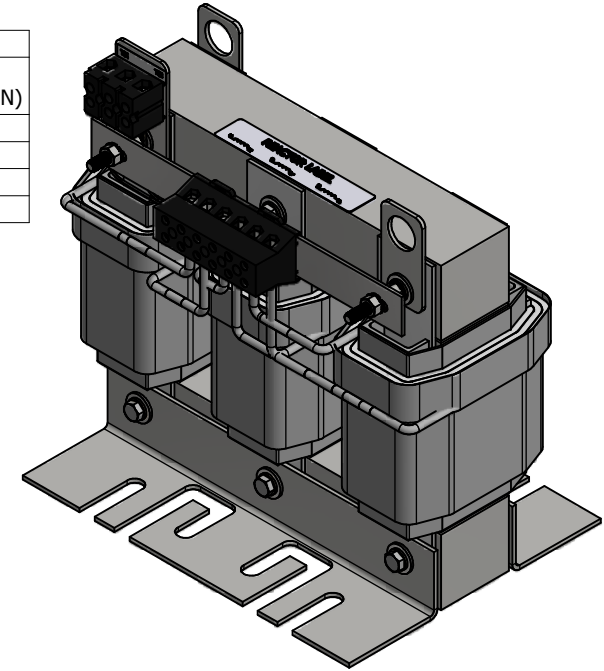
2

1

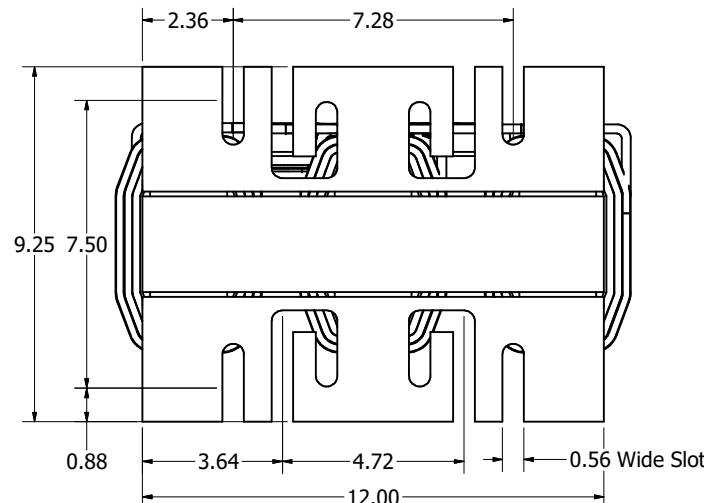
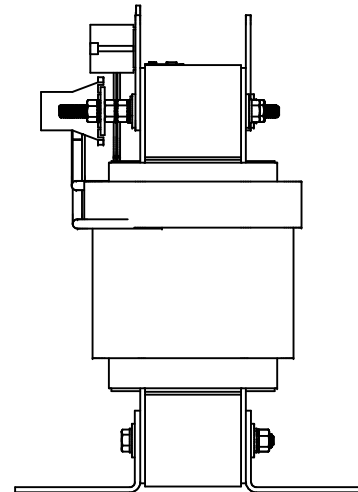
| TCI Part Number | Horsepower (HP) | Rated Amps (A) | uH+8%/-2% | Weight (LBS) |
|-----------------|-----------------|----------------|-----------|--------------|
| KTR14A65HE | 100 | 38 | 2325 | 95 |



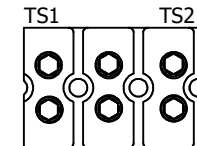
| Terminal Block | |
|----------------|---------------------------|
| Wire Size | Tightening Torque (LB-IN) |
| 1-4 AWG | 35 |
| 6-14 AWG | 30 |
| 16-20 AWG | 25 |
| 22 AWG | 20 |



Markings On Coil
For Reference only




Thermal Switch
Terminal Block



Wire Range: 18 AWG To 4 AWG.
Torque: 20 LB-IN (2.3 Nm)
Switch Opens on Temperature Rise
Contact Rating: 6A @ 120 VAC

Customer Is Responsible For Installation to
Meet All National And Local Electrical Codes.

Material(s) Shall be RoHS Compliant

| | | | | | | | |
|---|-------------|----------|-----|---------------------------------|--|---|------------------|
| THE INFORMATION AND DESIGNS CONTAINED IN THIS DRAWING ARE CONFIDENTIAL AND THE PROPRIETARY PROPERTY OF ALLIED MOTION TECHNOLOGIES INC. AND ITS SUBSIDIARIES. NEITHER THIS DESIGN NOR ANY INFORMATION CONTAINED IN THIS DRAWING MAY BE REPRODUCED OR DISCLOSED TO OTHERS WITHOUT THE EXPRESS WRITTEN CONSENT OF ALLIED MOTION TECHNOLOGIES INC. AND ITS SUBSIDIARIES. | | | | TOLERANCES (EXCEPT AS NOTED) | |  W132N10611 (Rev 1346) Germantown, WI 53022 © 2023 TCI, LLC KTR14A65HE, KTR, HSE 100HP, 480V, 38 Amps, 2325uH 109299DG | |
| | | | | DECIMAL | | | |
| | | | | .XX ± .25 .XXX ± .10 | | | |
| | | | | FRACTIONAL ± 1/16 | | | |
| A | As Designed | 3/9/2023 | DSW | ANGULAR ± 1° | | OWN BY DSW | DATE 3/9/2023 |
| NO | REVISION | DATE | BY | SCALE 1/2.5 | | REV C | SHT 1 OF 1 |

D

C

A

B

A

D

C

4

B

A