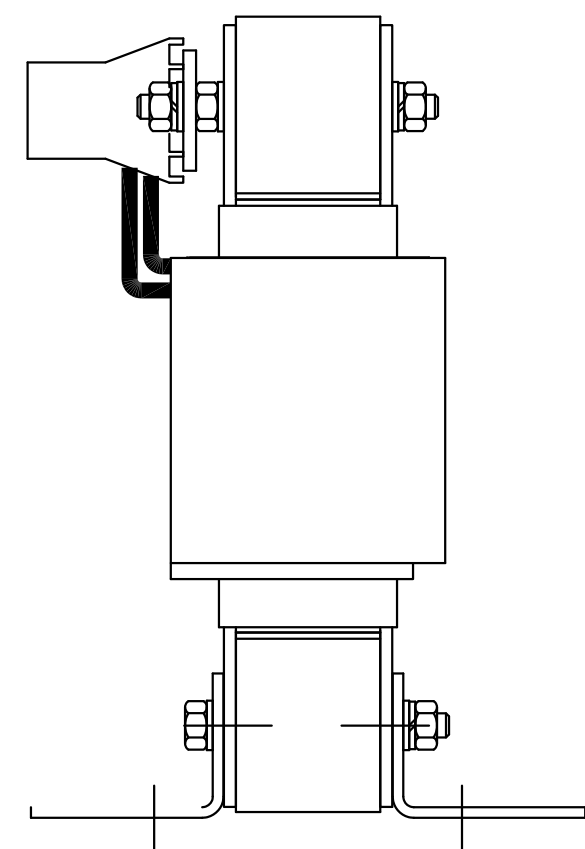
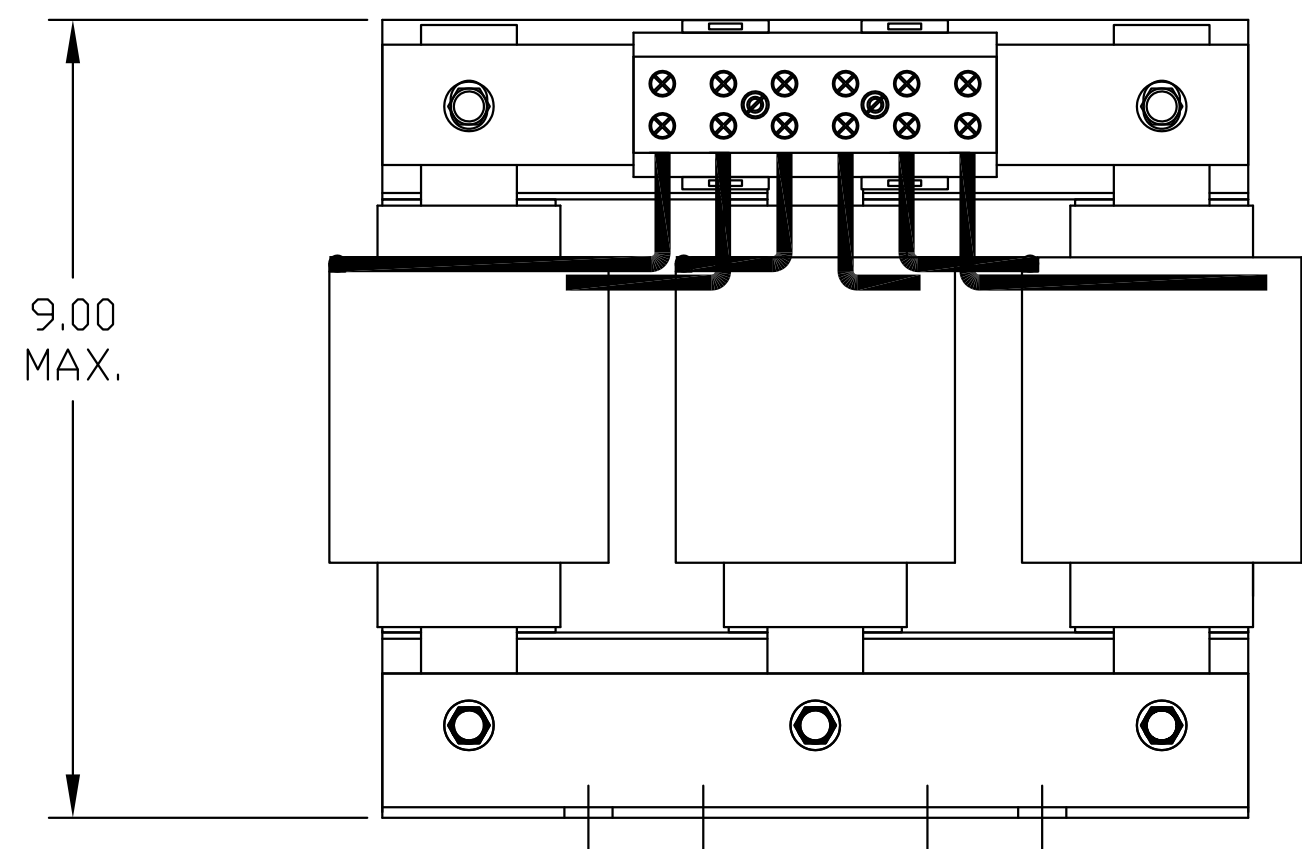
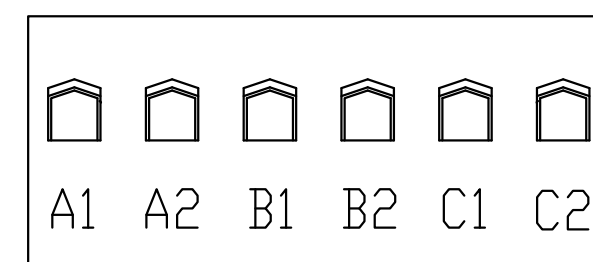


|            |   |           |               |
|------------|---|-----------|---------------|
| CATALOG NO | __mH $\begin{matrix} +8\% \\ -2\% \end{matrix}$ | __AMPS(A) | APPROX WT-LBS |
| KTR12L55HG | 1.99  | 26.7      | 35            |

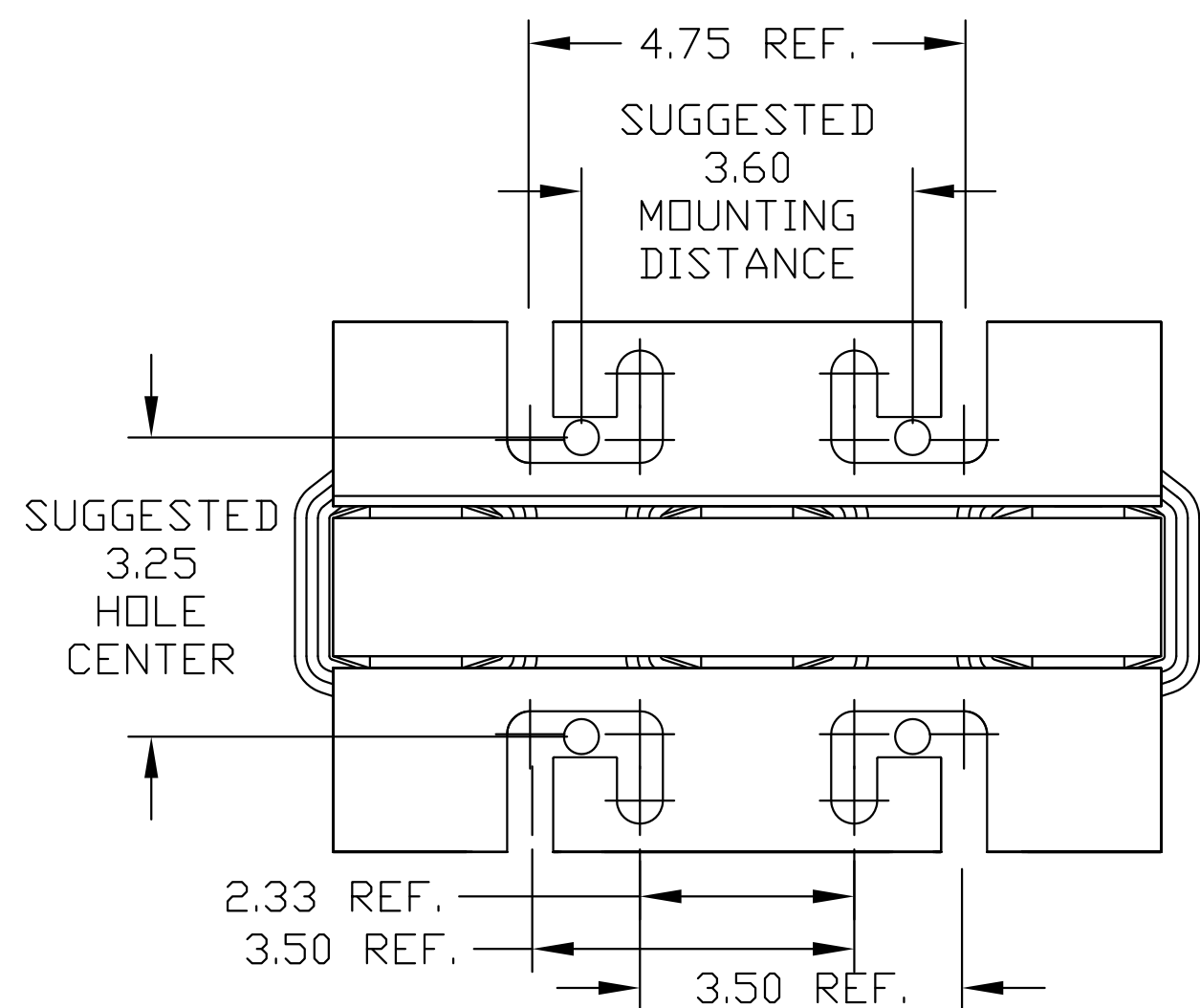


NOTE: A1, A2, B1, B2, C1, C2, TERMINAL BLOCK FOR REFERENCE ONLY.



TERMINAL BLOCK  
TORQUE(LB-IN)=CUSTOMER WIRE

35 = 1 AWG THRU 4 AWG  
30 = 6 AWG THRU 14 AWG  
25 = 16 AWG THRU 20 AWG  
20 = 22 AWG



|  |             |          |     |                               |  |
|--|-------------|----------|-----|-------------------------------|--|
| TCI, LLC CLAIMS PROPRIETARY RIGHTS IN THE MATERIAL HEREIN DISCLOSED. IT IS SUPPLIED WITHOUT PREJUDICE TO ANY PATENT RIGHTS OF TCI AND MAY NOT BE REPRODUCED OR USED TO MANUFACTURE ANYTHING SHOWN THEREIN WITHOUT WRITTEN PERMISSION FROM TCI. |             |          |     | TOLERANCES (EXCEPT AS NOTED): | W132 N10611 Grant Drive Germantown, WI 53022<br><br><b>KTR12L55HG TRAP REACTOR</b><br><b>400V, 30kW.</b> |
|  |             |          |     | DECIMAL                       |  |
|  |             |          |     | FRACTIONAL                    |  |
|  |             |          |     | ANGULAR                       |  |
|  | AS RELEASED | 10/21/10 | DSW | $\pm 1/2^\circ$               | DRN. BY DSW DATE 10/21/10 DWG. NO. 104488DG  |
|  | REVISION    | DATE     | BY  |                               | SCALE TO FIT SIZE C SHT.1 OF 1   |