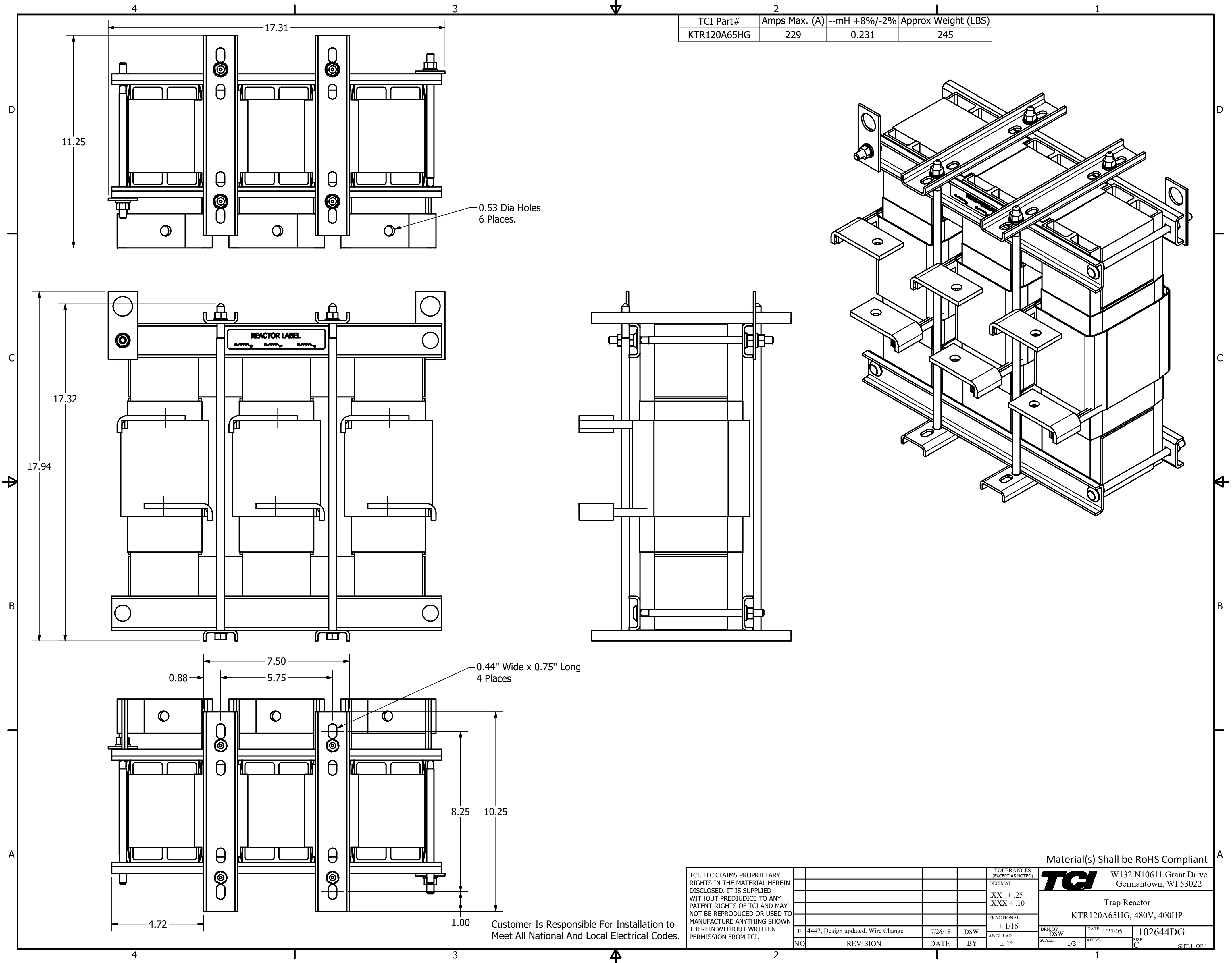


TCI Part#	Amps Max. (A)	--mH +8%/-2%	Approx Weight (LBS)
KTR120A65HG	229	0.231	245



TCI, LLC CLAIMS PROPRIETARY RIGHTS IN THE MATERIAL HEREIN DISCLOSED. IT IS SUPPLIED WITHOUT PREJUDICE TO ANY PATENT RIGHTS OF TCI AND MAY NOT BE REPRODUCED OR USED TO MANUFACTURE ANYTHING SHOWN THEREIN WITHOUT WRITTEN PERMISSION FROM TCI.

NO	REVISION	DATE	BY
E	4447, Design updated, Wire Change	7/26/18	DSW

TOLERANCES (EXCEPT AS NOTED)	
DECIMAL	.XX ± .25 .XXX ± .10
FRACTIONAL	± 1/16
ANGULAR	± 1°

Material(s) Shall be RoHS Compliant

TCI W132 N10611 Grant Drive
Germantown, WI 53022

Trap Reactor
KTR120A65HG, 480V, 400HP

DRN BY DSW	DATE 4/27/05	102644DG
SCALE 1/3	APRVD	SIZE C

SHT. 1 OF 1