

CATALOG NO	--mH $\begin{matrix} +8\% \\ -2\% \end{matrix}$	--AMPS(A)	APPROX WT-LBS
KTR10C65HG	4.323	15.31	15

TCL Performance and Protection for Drives.

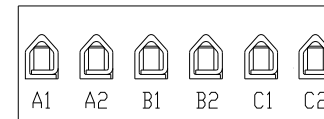
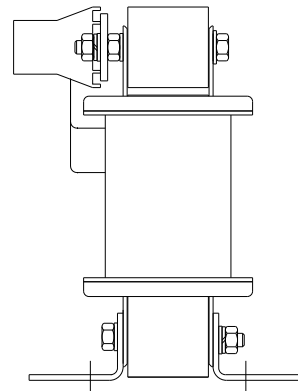
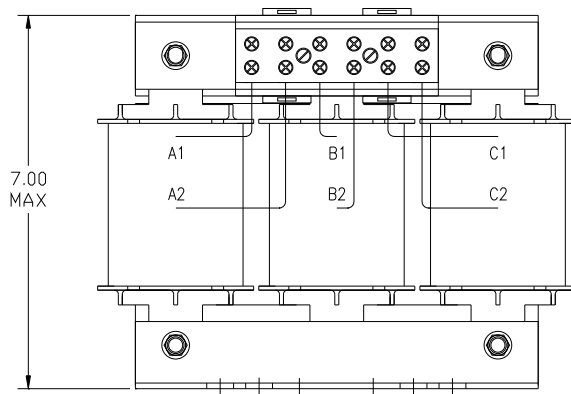
TRANS-COIL, INC
MILWAUKEE WI
WWW.TRANSCOIL.COM
800-824-8282

KTR Tuning Reactor
CATALOG

3PH, 60Hz, 600V Max, --- Amps
40C Amb Max, 115C Rise

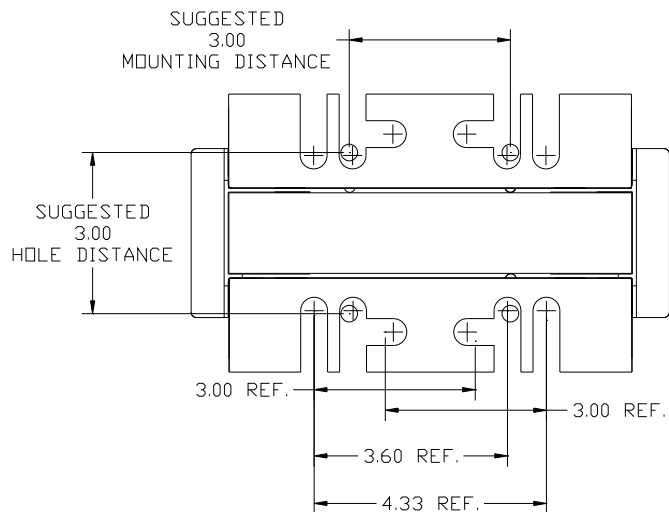
UL US SA CE

A1 A2 B1 B2 C1 C2



NOTE: A1, A2, B1, B2, C1, C2, MARKINGS ON COIL AND TERMINAL BLOCK FOR REFERENCE ONLY.

TERMINAL BLOCK	
TORQUE(LB-IN)=CUSTOMER WIRE	
35	= 1 AWG THRU 4 AWG
30	= 6 AWG THRU 14 AWG
25	= 16 AWG THRU 22 AWG



TCL LLC CLAIMS PROPRIETARY RIGHTS IN THE MATERIAL HEREIN DISCLOSED. IT IS SUPPLIED WITHOUT PREJUDICE TO ANY PATENT RIGHTS OF TCL AND MAY NOT BE REPRODUCED OR USED TO MANUFACTURE ANYTHING SHOWN THEREIN WITHOUT WRITTEN PERMISSION FROM TCL.				TOLERANCES (EXCEPT AS NOTED): DECIMAL	TCL W132 N10611 Grant Drive Germanstown, WI 53022
				.XX ± .03 .XXX ± .01	
				FRACTIONAL ± 1/32	TRAP REACTOR KTR10C65HG, 30HP, 600V
				ANGULAR ± 1/2°	DRN BY DSW DATE 01/31/05 DWG NO 102375DG SCALE TO FIT SIZE C SHT. 1 OF 1
	B	2661 ADD CE	2/24/10 DSW		
	NO	REVISION	DATE BY		