

CATALOG NO	--mH $\begin{matrix} +8\% \\ -2\% \end{matrix}$	--AMPS(A)	APPROX WT-LBS
KTR105A65HG	.263	200.89	135

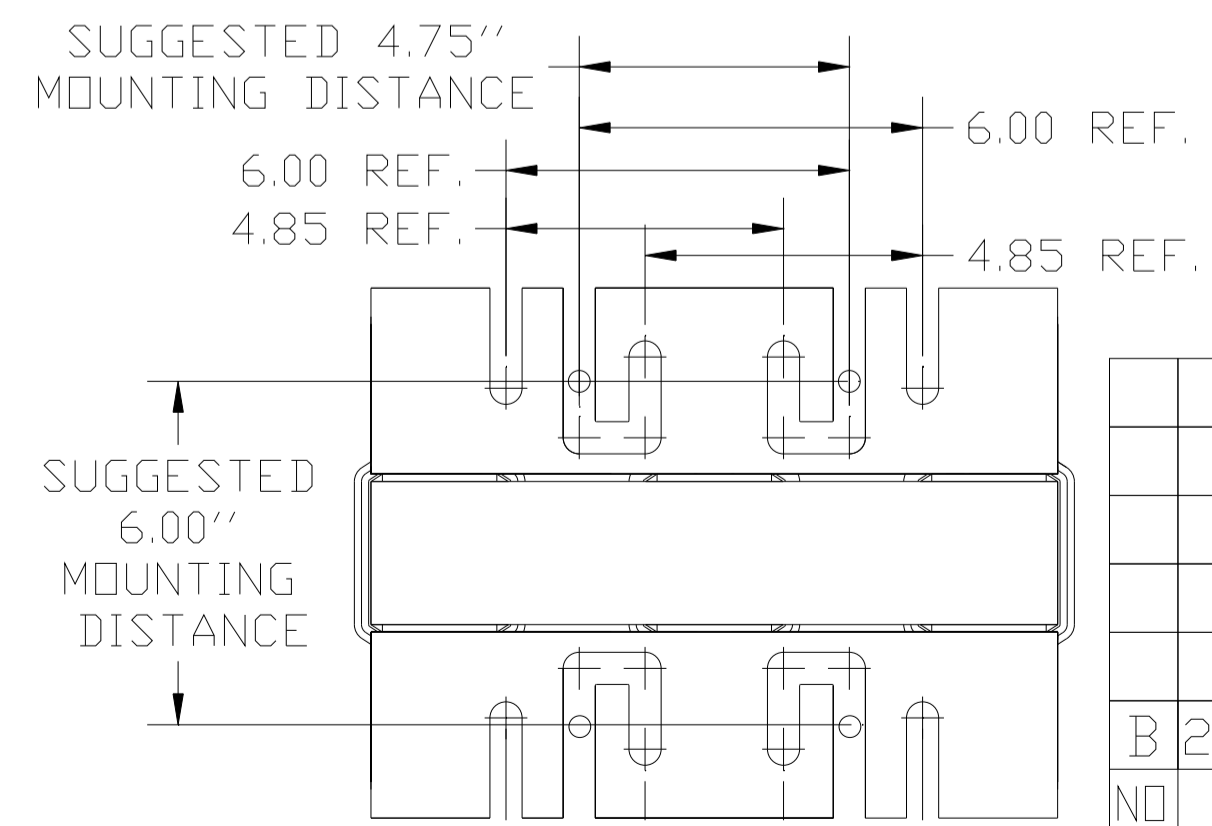
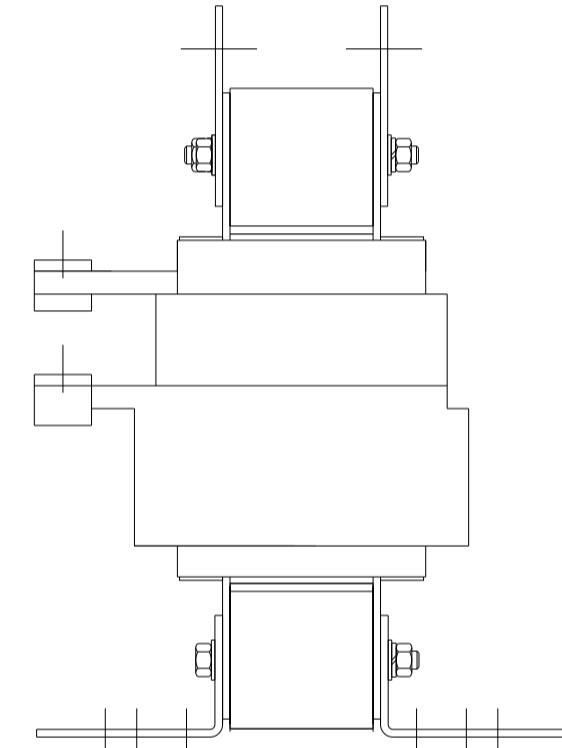
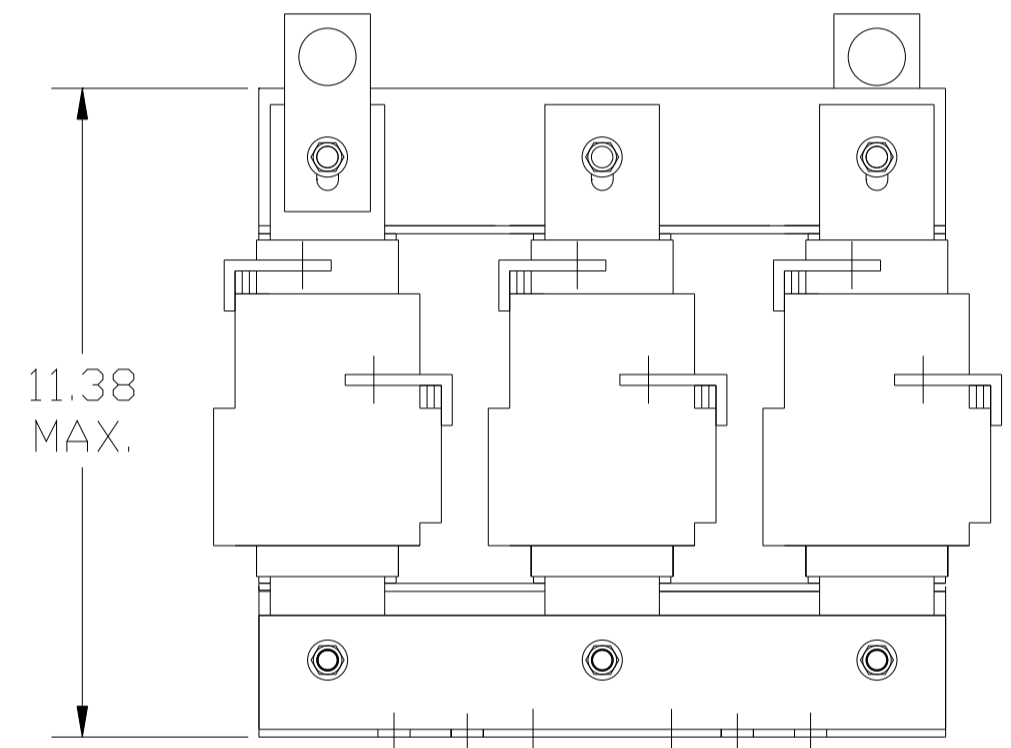
TCI Performance and Protection for Drives.

TRANS-COIL, INC
MILWAUKEE WI
WWW.transcoil.com
800-824-8282

KTR Tuning Reactor
CATALOG#
3PH, 60Hz, 600V Max, --- Amps
40C Amb Max, 155C Rise

RU[®] SA[®] CE

A1 A2 B1 B2 C1 C2



				TOLERANCES (EXCEPT AS NOTED)	TCI 7878 N. 86th STREET MILWAUKEE, WI 53224		
				DECIMAL			
				.XX ± .03	KTR105A65HG TRAP REACTOR 200.89 AMPS, 480V, 350 HP		
				.XXX ± .01			
				FRACTIONAL	DRN. BY	DATE	DWG. NO.
				± 1/32	DSW	01/26/05	102303DG
				ANGULAR	SCALE	APRVD.	
				± 1/2°	TO FIT		
B	2661	ADD CE TO LABEL	2/24/10	DSW			
NO	REVISION		DATE	BY			