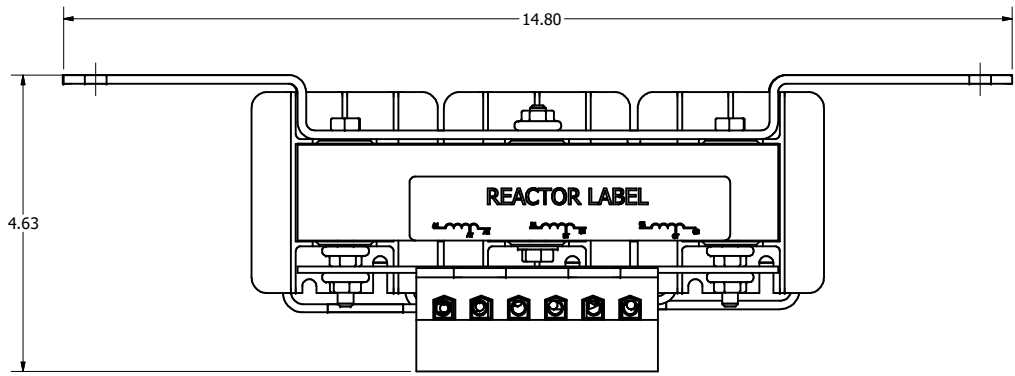
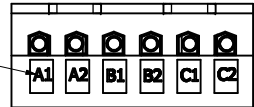


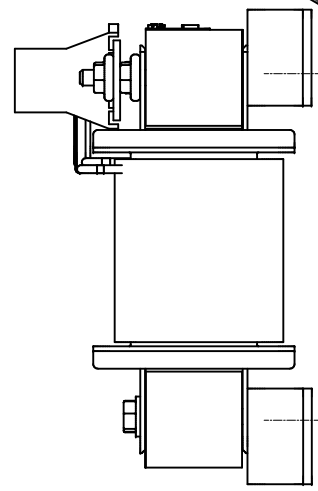
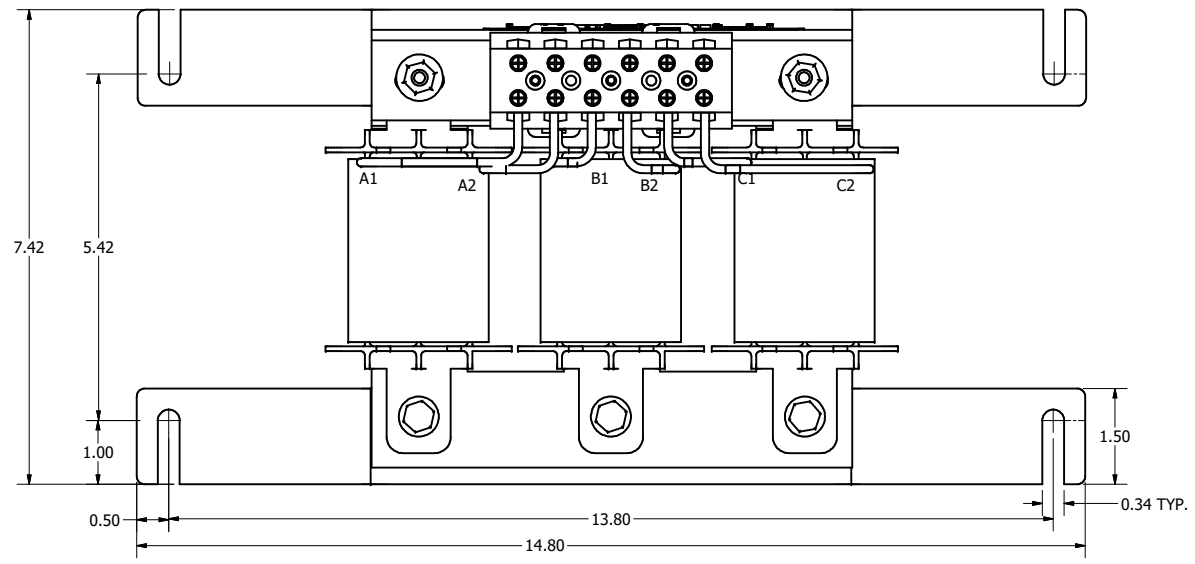
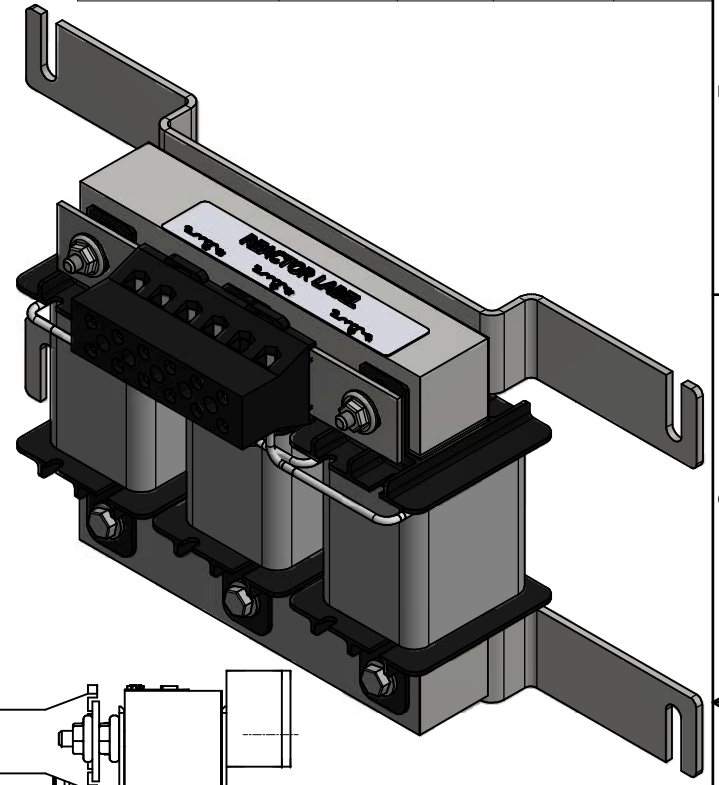
| TCI Part Number | Horsepower (HP) | Amps | ---uH +8%/-2% | Weight (LBS) |
|-----------------|-----------------|------|---------------|--------------|
| KTR087L55HGX1 | 30 | 18 | 2580 | 21 |



(Customer Connections)
Markings On Terminal Block
And Coils
For Reference Only.



Wire Range: 1- 4 AWG. Torque : 35 IN-LBS (3.95 Nm)
 6- 14 AWG. Torque : 30 IN-LBS (3.39 Nm)
 16- 20 AWG. Torque : 25 IN-LBS (2.28 Nm)
 22 AWG. Torque : 20 IN-LBS (2.26 Nm)



Customer Is Responsible For Installation to Meet All National And Local Electrical Codes. Material(s) Shall be RoHS Compliant

| | | | | | | |
|--|----------|--------------------------|-----------|------------------------------|--|--|
| THE INFORMATION AND DESIGNS CONTAINED IN THIS DRAWING ARE CONFIDENTIAL AND THE PROPRIETARY PROPERTY OF ALLIED MOTION TECHNOLOGIES INC. AND ITS SUBSIDIARIES. NEITHER THIS DESIGN NOR ANY INFORMATION CONTAINED IN THIS DRAWING MAY BE REPRODUCED OR DISCLOSED TO OTHERS WITHOUT THE EXPRESS WRITTEN CONSENT OF ALLIED MOTION TECHNOLOGIES INC. AND ITS SUBSIDIARIES. | | | | TOLERANCES (EXCEPT AS NOTED) | W132N10611 (Rev. 13 Feb 2022) Germantown, WI 53022 © 2022 TCI, LLC | |
| | | | | DECIMAL | | .XX ± .25 .XXX ± .10 |
| | B | 5945, Update Title Block | 5/18/2022 | DSW | FRACTIONAL | An Allied Motion Company KTR087L55HGX1, Wall Mounted 400V, 18A, 3 Phase, 13.8" Spacing |
| | A | AS DESIGNED | 2/17/2020 | DSW | ANGULAR | |
| NO | REVISION | DATE | BY | ± 1° | TCI 108450DG SHEET 1 OF 1 | |