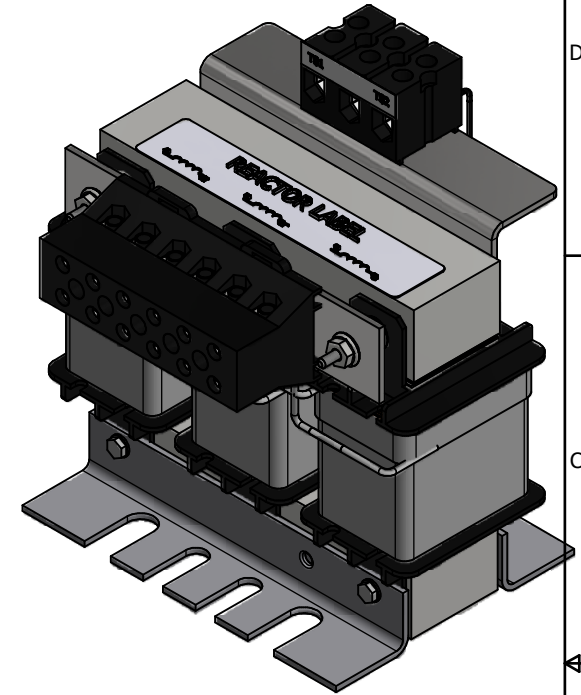
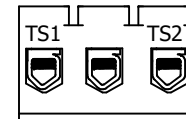


| TCI Part Number | HP | Amps | mH +8%/-2% | Weight (LBS) |
|-----------------|----|------|------------|--------------|
| KTR007A65HE | 5 | 2.2 | 50 | 14 |

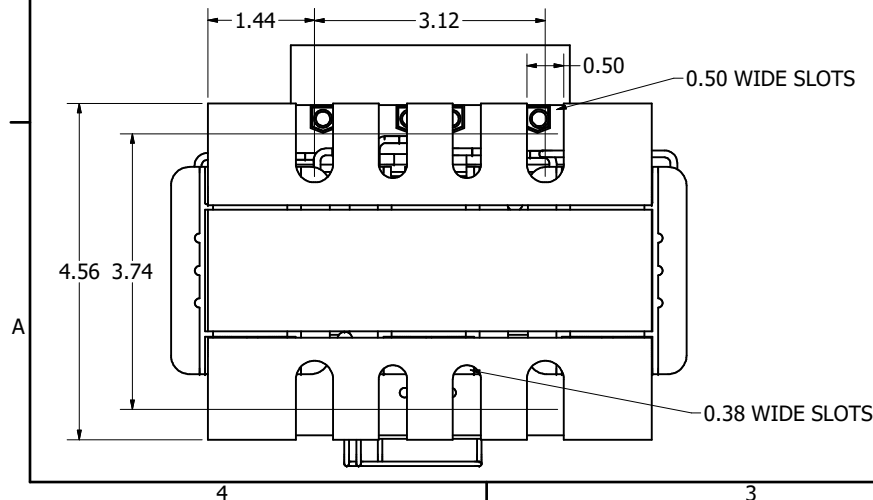
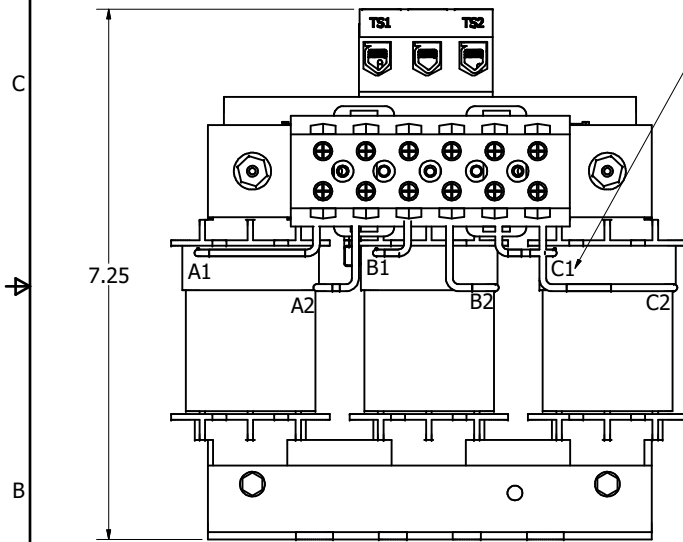
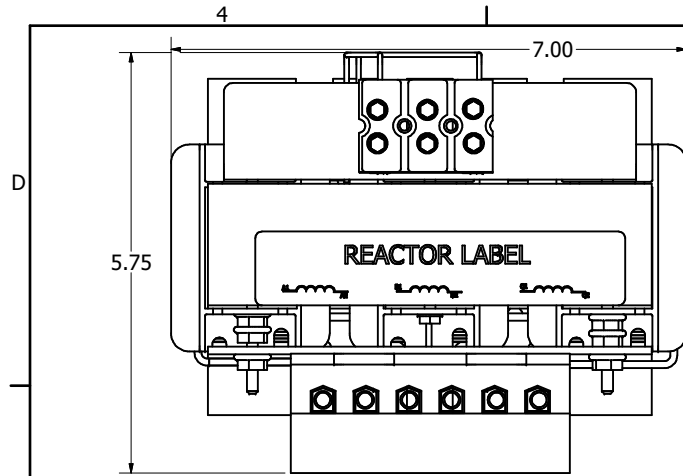
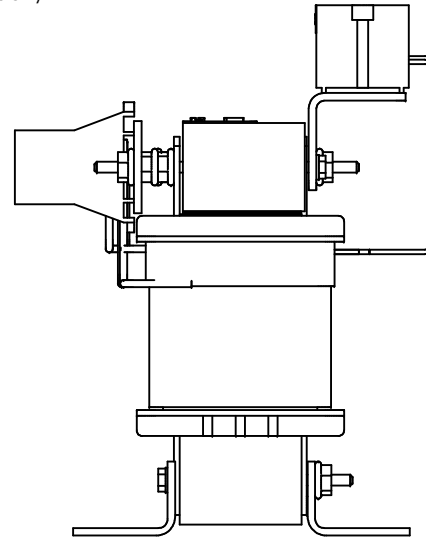


Thermal Switch
Terminal Block



Wire Range: 18 AWG To 4 AWG.
Torque: 20 LB-IN (2.3 Nm)
Switch Opens on Temperature Rise
Contact Rating: 6A @ 120 VAC

Note: Markings, A1,A2,B1,B2,C1,C2
for Reference Only.



THE INFORMATION AND DESIGNS CONTAINED
IN THIS DRAWING ARE CONFIDENTIAL AND THE
PROPRIETARY PROPERTY OF ALLIED MOTION
TECHNOLOGIES INC. AND ITS SUBSIDIARIES.
NEITHER THIS DESIGN NOR ANY INFORMATION
CONTAINED IN THIS DRAWING MAY BE
REPRODUCED OR DISCLOSED TO OTHERS
WITHOUT THE EXPRESS WRITTEN CONSENT OF
ALLIED MOTION TECHNOLOGIES INC. AND ITS
SUBSIDIARIES.

| NO | REVISION | DATE | BY |
|----|-------------|-----------|-----|
| A | As Designed | 9/16/2022 | DSW |

TOLERANCES
(EXCEPT AS NOTED)
DECIMAL
.XX ± .25
.XXX ± .10
FRACTIONAL
± 1/16
ANGULAR
± 1°

TCI
An Allied Motion Company
KTR007A65HE

W132N10611 (Rev. 13 Feb 2022)
Germanstown, WI 53022
© 2022 TCI, LLC

OWN BY: DSW DATE: 9/16/2022 108848DG
SCALE: DRAWN BY: C

SHT 1 OF 1