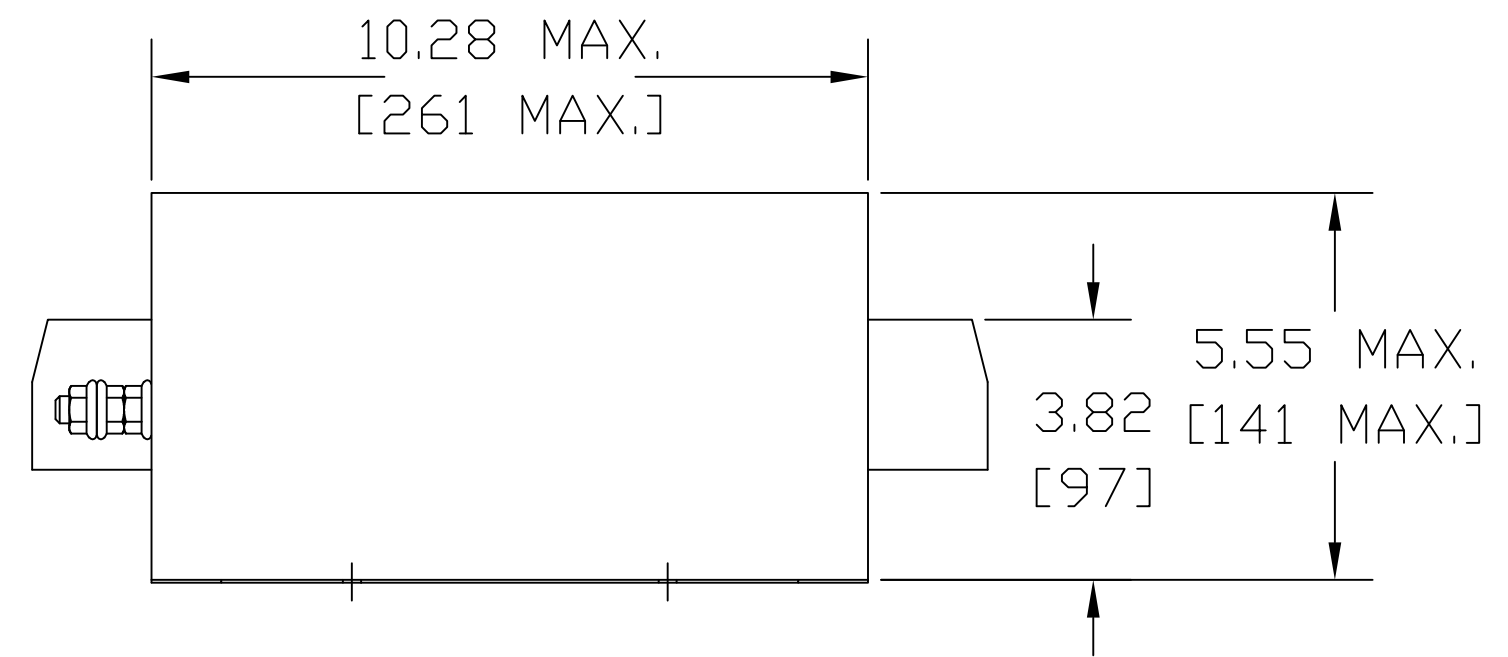
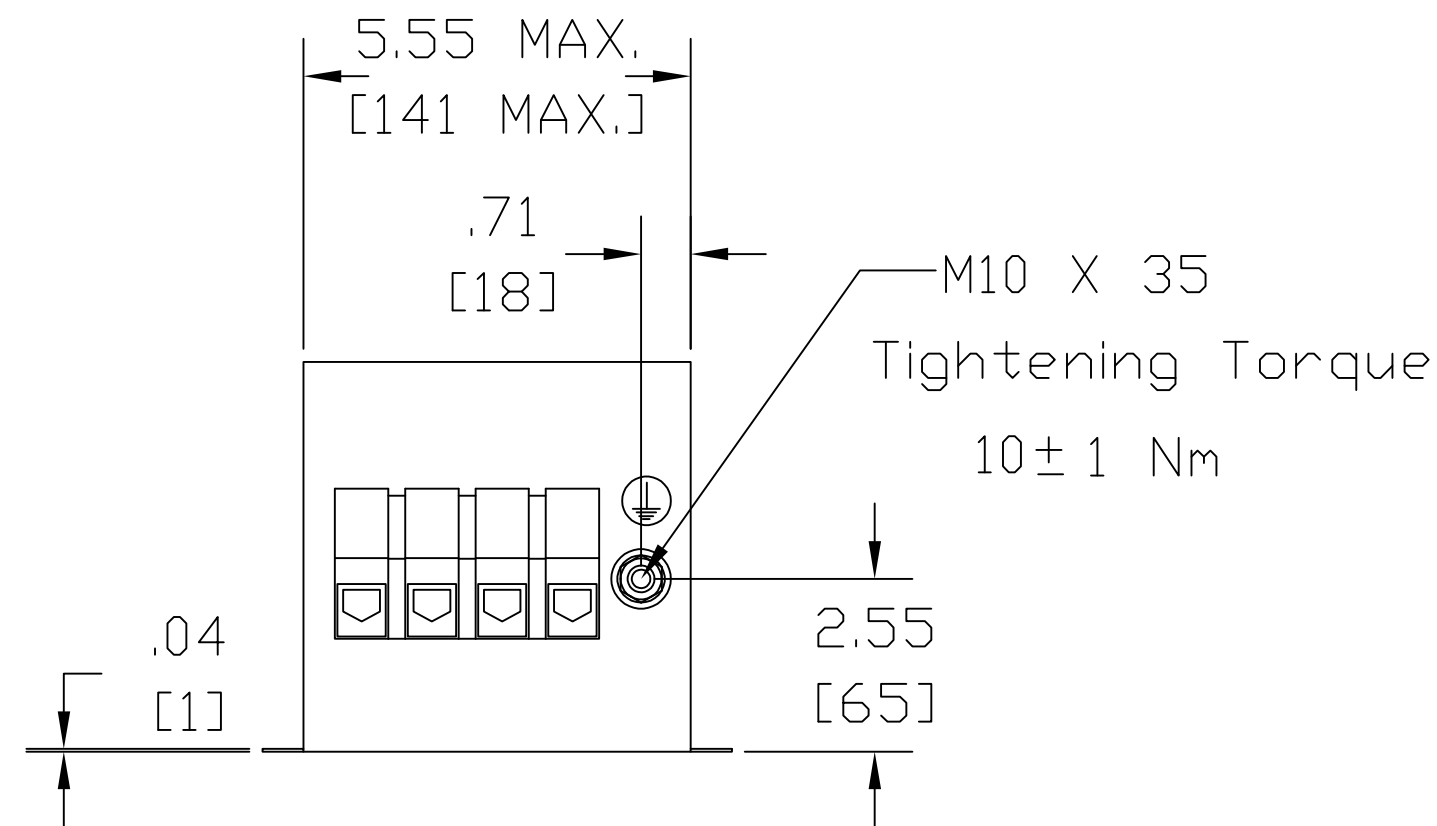
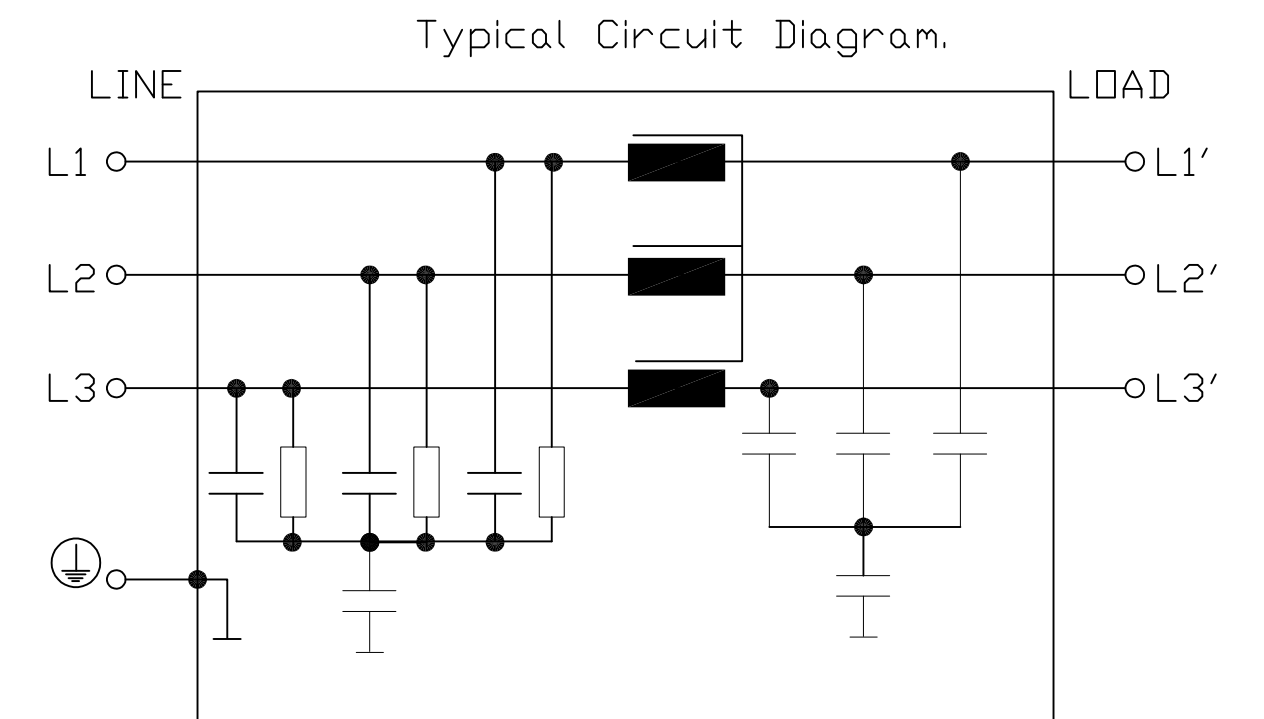


Terminals 50mm
Tightening Torque of
screw 6-8 Nm.



Technical data and measuring conditions.

Rated Voltage V_R	760/440 V AC, 50/60Hz.
Rated Current I_R	Referred to 40 °C ambient temperature
Test Voltage V_{test}	3270 V DC, 2 s (line/line) 3000 V DC, 2 s (line/case)
Overload Capability (thermal)	1.5 · I_R for 3 min per hour or 2.5 · I_R for 30 s per hour
Leakage Current I_{leak}	At 690 V AC, 50 Hz.
Climatic Category (IEC 60068-1)	25/100/21 (-25 °C/+100 °C/21 days damp heat test)
Approval Standards	EN 133200, UL 1283, CSA C22.2 No. 8
Approval Markings	UR, cUR



V_R	I_R	Terminal cross section	I_{leak}	$R_{typ.}$	Approx. Weight
V	A	mm ²	mA	m ohm	kg. / lbs.
760/440	120	50	< 12	.75	10 / 22

				TOLERANCES (EXCEPT AS NOTED)		W132 N10611 Grant Drive Germantown, WI 53022	
				DECIMAL			
				.XX ± .02			
				.XXX ± .01			
ECO 3959 ADDED				4/24/17	JRN		
APPROVAL MARKINGS						FRACTIONAL ± 1/32	
A UPDATE APPROVALS				6/13/11	DSW	ANGULAR ± 1/2°	
NO REVISION				DATE	BY	SCALE TO FIT	
				DATE	1/07/2010	DVG. NO. KRF0120VTB	
				APRVD.		SHT.1 OF1	