

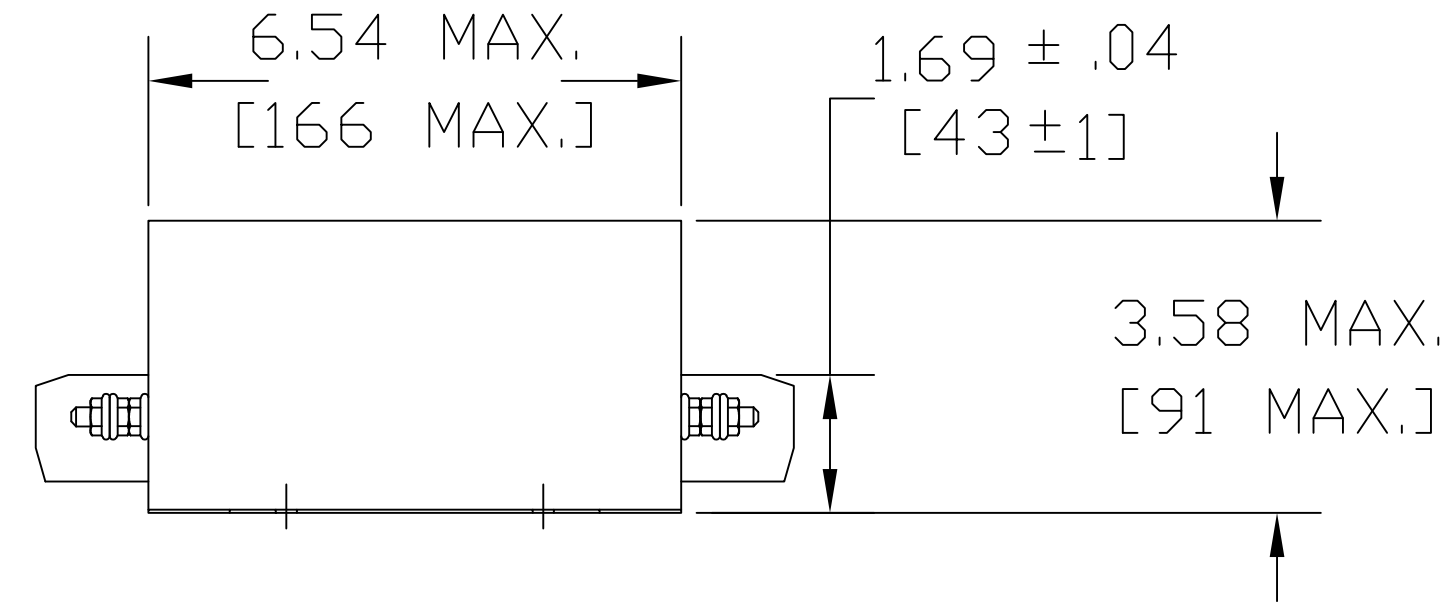
Tightening Torque

3 ± 0.15 Nm

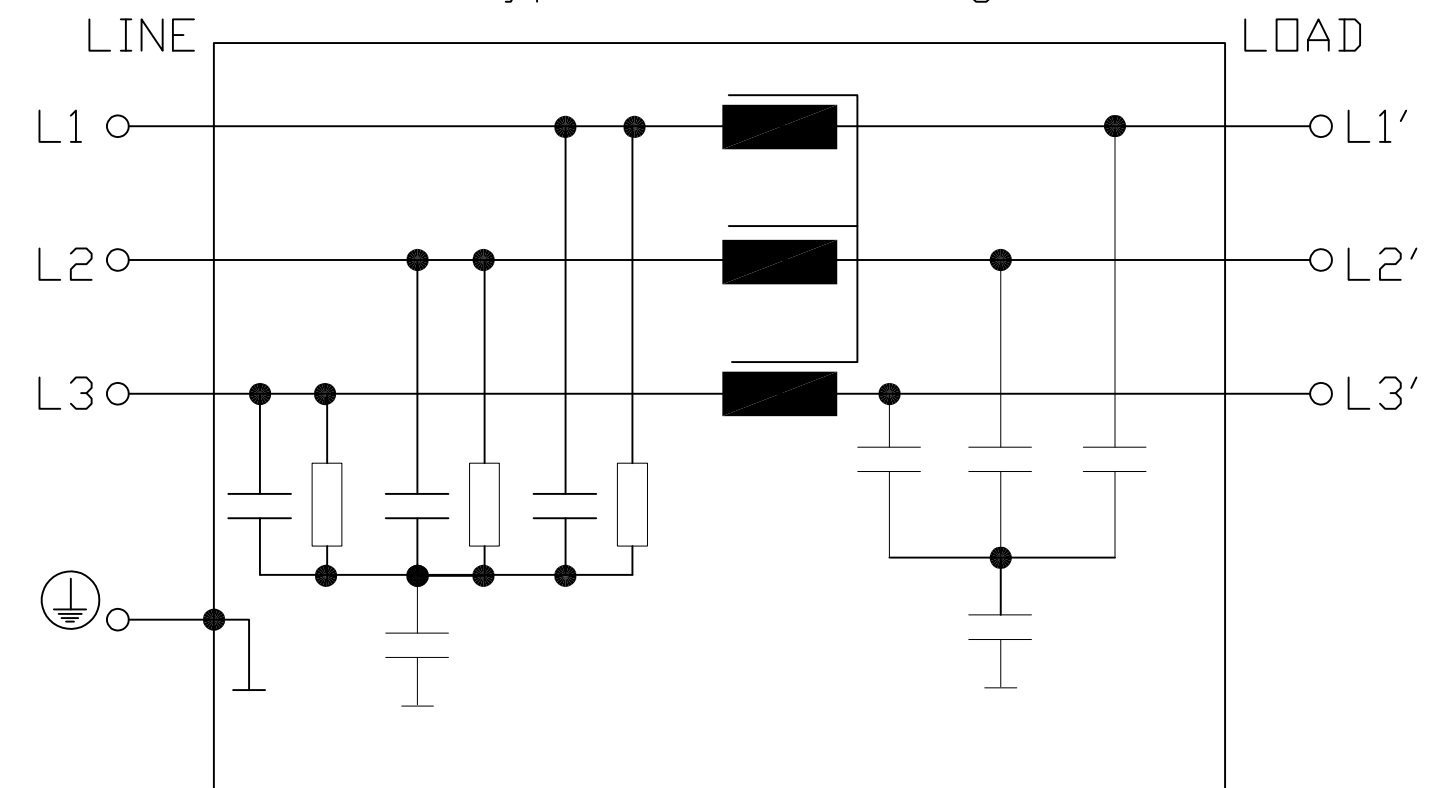
### Technical data and measuring conditions.

Rated Voltage $V_R$	760/440 V AC, 50/60Hz.
Rated Current $I_R$	Referred to 40 °C ambient temperature
Test Voltage $V_{test}$	3270 V DC, 2 s (line/line) 3000 V DC, 2 s (line/case)
Overload Capability (thermal)	1.5 · $I_R$ for 3 min per hour or 2.5 · $I_R$ for 30 s per hour
Leakage Current $I_{leak}$	At 690 V AC, 50 Hz.
Climatic Category (IEC 60068-1)	25/100/21 (-25 °C/+100 °C/21 days damp heat test)
Approval Standards	EN 133200, UL 1283, CSA C22.2 No. 8
Approval Markings	UR, cUR

$V_R$ AC V	$I_R$ A	Terminal cross section mm <sup>2</sup>	$I_{leak}$ mA	$R_{typ.}$ m ohm	Approx. Weight kg. / lbs.
760/440	50	10	< 12	2.0	4 / 8.8



Typical Circuit Diagram.



				TOLERANCES (EXCEPT AS NOTED)		W132 N10611 Grant Drive Germantown, WI 53022	
				DECIMAL			
				.XX ± .02			
				.XXX ± .01			
ECO 3959 ADDED				4/12/17	JRN	FRACTIONAL	
APPROVAL MARKINGS						± 1/32	
A UPDATE APPROVALS				6/13/11	DSW	ANGULAR	
NO REVISION				DATE	BY	± 1/2°	
				SCALE TO FIT		DRN. BY DSW DATE 1/07/2010 DWG. NO. KRF0050VTB	
						SHT.1 OF1	