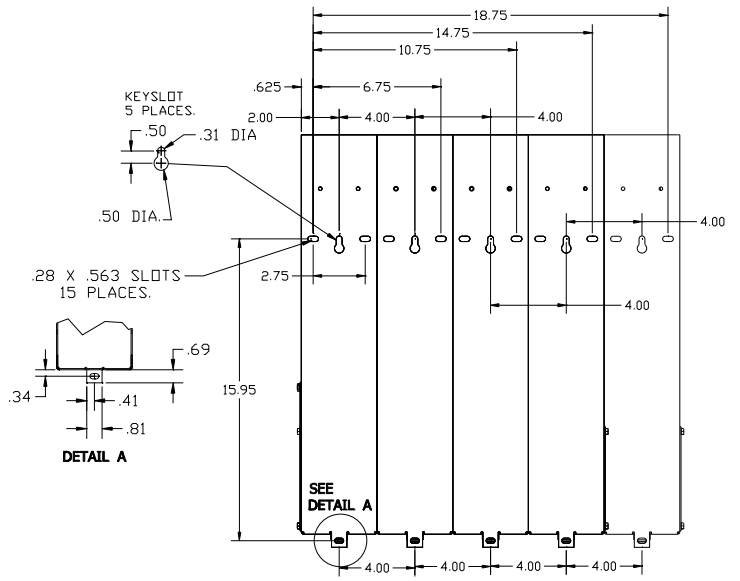
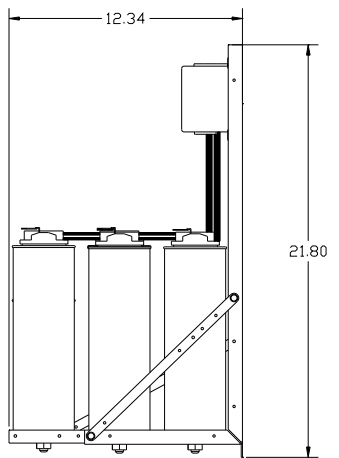
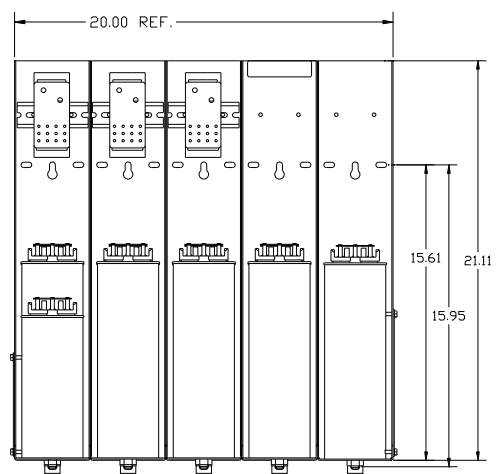
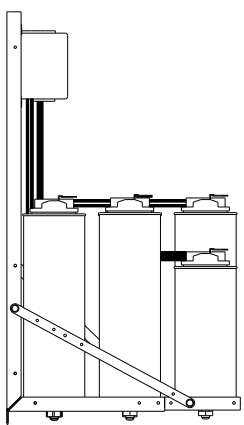
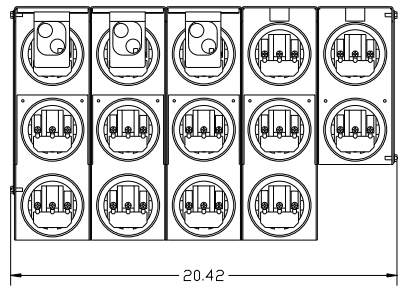
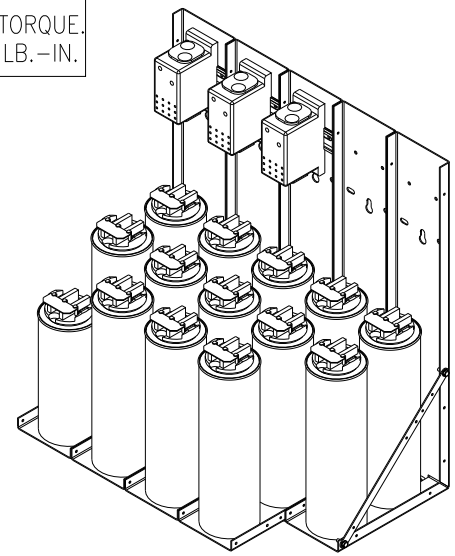


KPCUL270A60, 480V, 270kVar, 900HP.  
 APPROX. WEIGHT: 75LBS

CUSTOMER INPUT:  
 WIRE RANGE TIGHTENING TORQUE.  
 300kcmil to 4AWG. 275 LB.-IN.



NOTE: 27908, Manual KPC Installation Guide  
 MUST SHIP WITH EACH ASSEMBLY.

TCI, LLC CLAIMS PROPRIETARY RIGHTS IN THE MATERIAL HEREIN DISCLOSED. IT IS SUPPLIED WITHOUT PREJUDICE TO ANY PATENT RIGHTS OF TCI AND MAY NOT BE REPRODUCED OR USED TO MANUFACTURE ANYTHING SHOWN THEREIN WITHOUT WRITTEN PERMISSION FROM TCI.				TOLERANCES (EXCEPT AS NOTED): DECIMAL	<b>TCI</b> ® W132 N10611 Grant Drive Germantown, WI 53022 KPCUL270A60, 900HP, 270kVar PANELIZED CAPS
				.XX ± .03	
				.XXX ± .01	
				FRACTIONAL ± 1/32 ANGULAR ± 1/2°	
D	3093 CAP CHG	5/8/14	BMZ	DRN BY DSW DATE 8/24/11 DWG. NO. 104805DG	SCALE TO FIT SIZE C
NO	REVISION	DATE	BY	SHT. 1 OF 1	