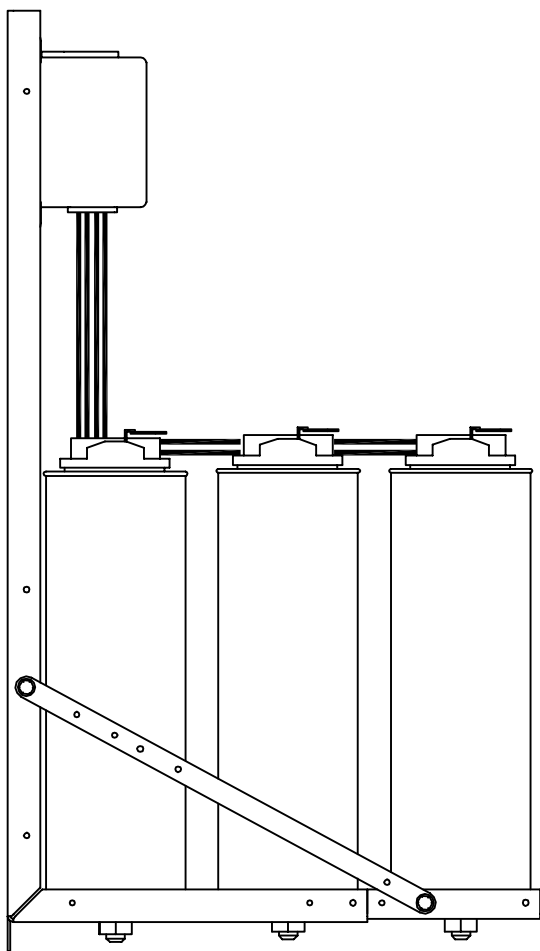
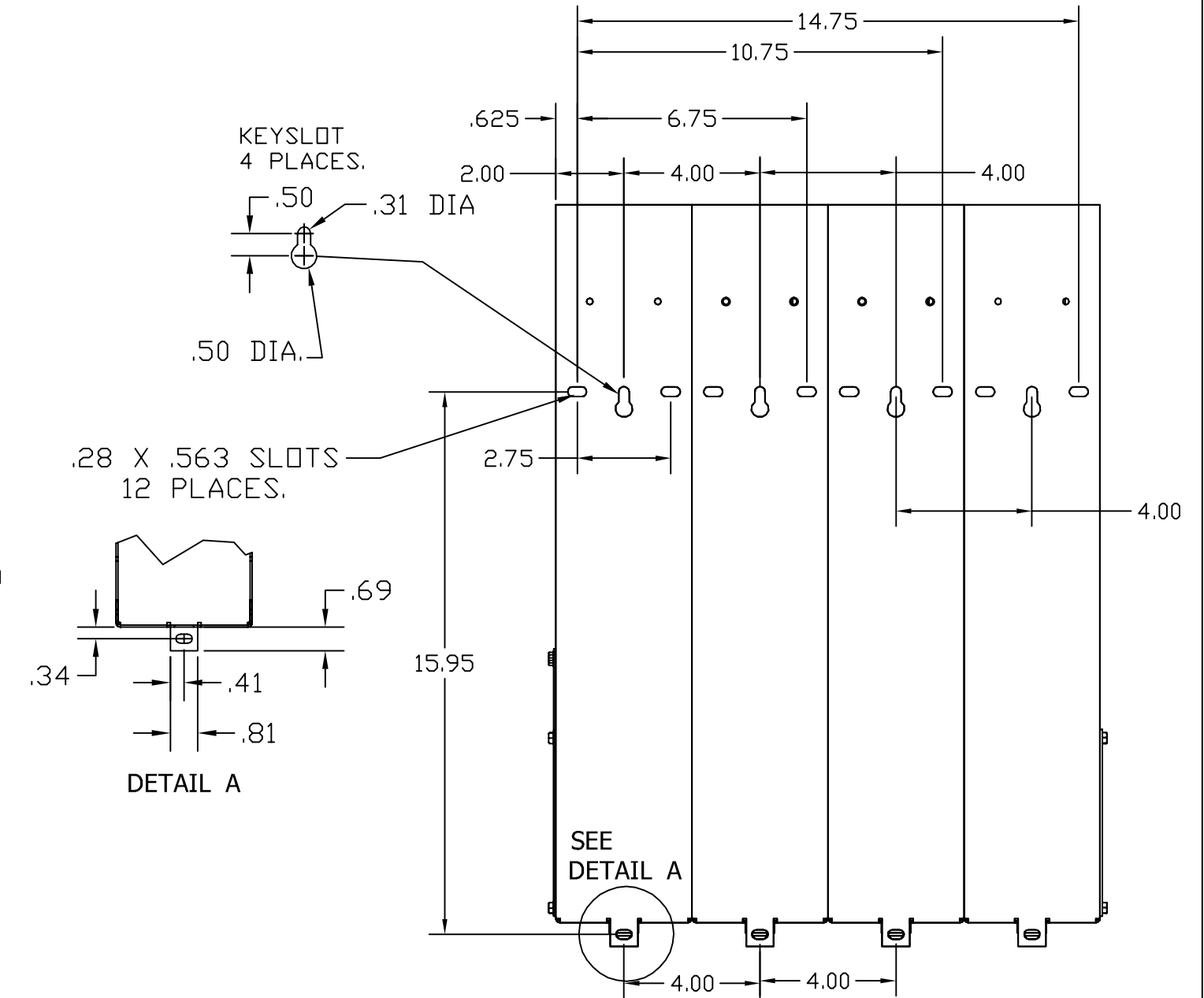
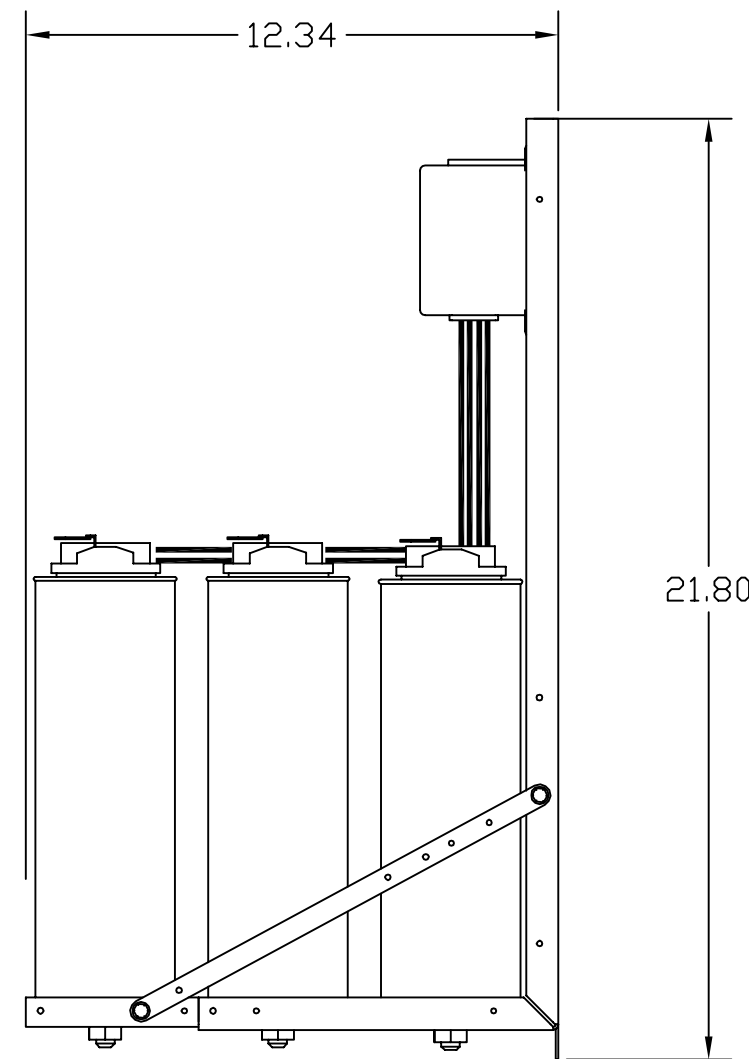
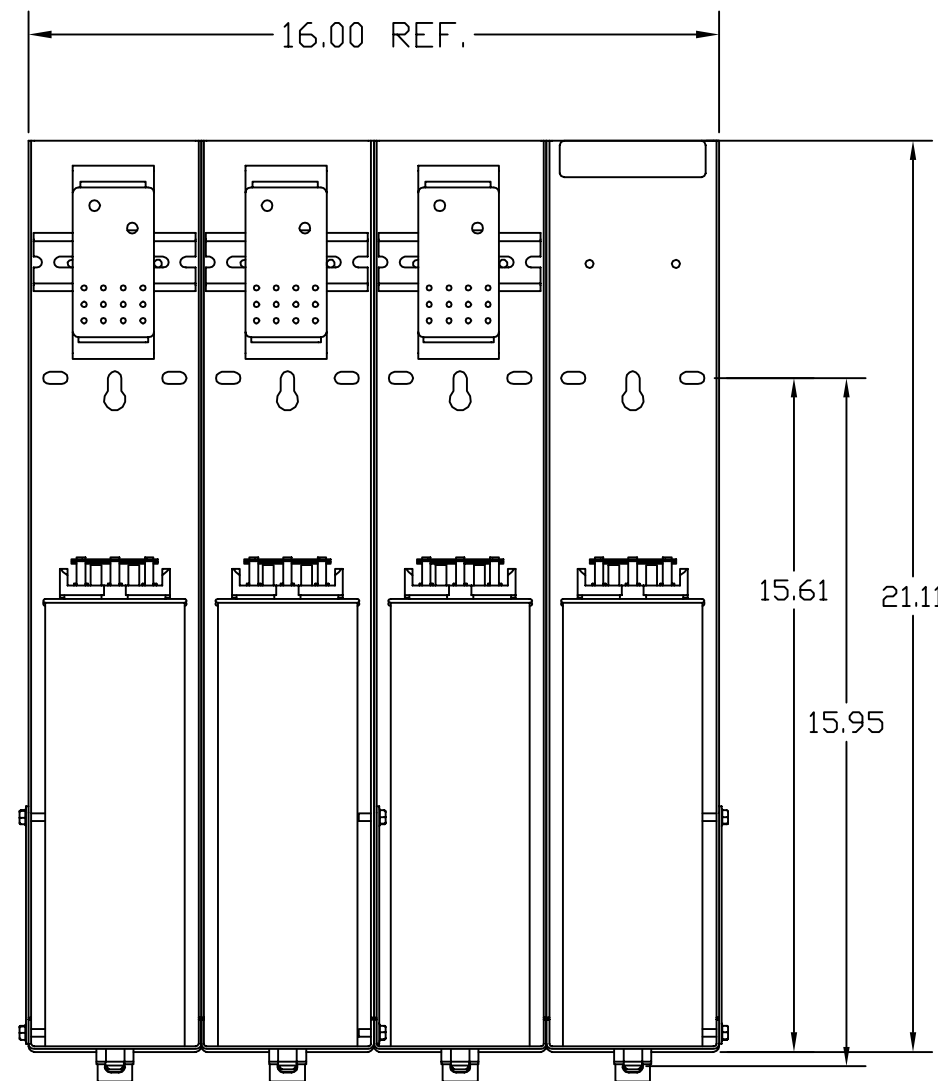
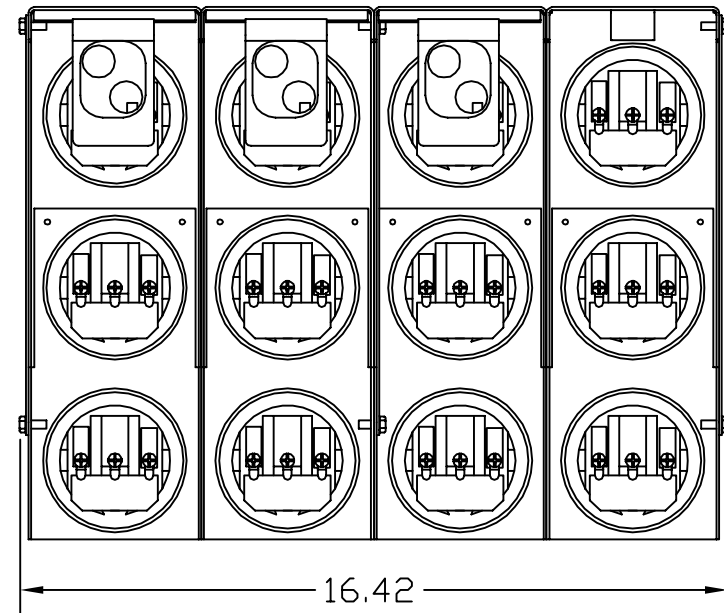
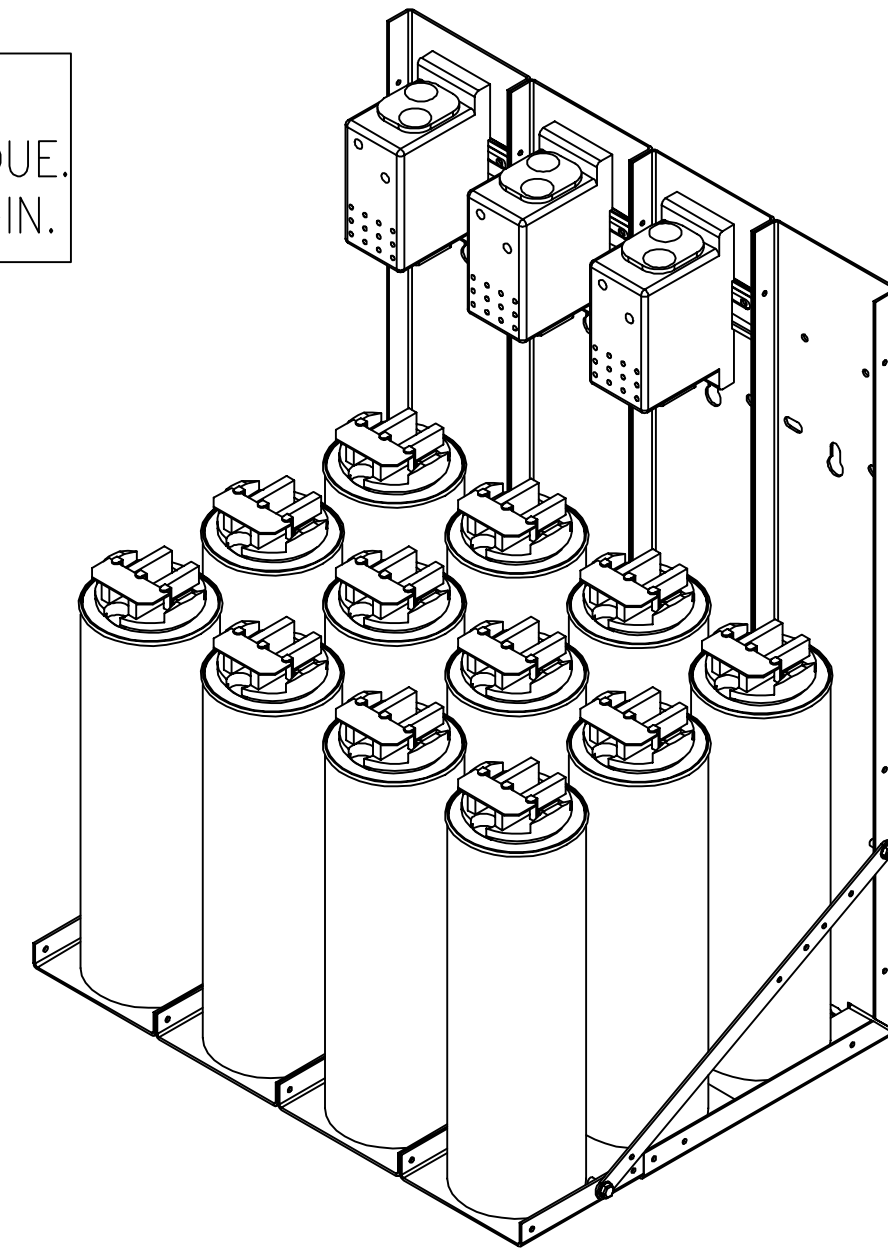


KPCUL240A60, 480V, 240kVar, 800HP.

APPROX. WEIGHT: 65LBS

CUSTOMER INPUT:  
WIRE RANGE TIGHTENING TORQUE.  
300kcmil to 4AWG. 275 LB.-IN.



NOTE: 27908, Manual KPC Installation Guide  
MUST SHIP WITH EACH ASSEMBLY.

TCI, LLC CLAIMS PROPRIETARY RIGHTS IN THE MATERIAL HEREIN DISCLOSED. IT IS SUPPLIED WITHOUT PREJUDICE TO ANY PATENT RIGHTS OF TCI AND MAY NOT BE REPRODUCED OR USED TO MANUFACTURE ANYTHING SHOWN THEREIN WITHOUT WRITTEN PERMISSION FROM TCI.				TOLERANCES (EXCEPT AS NOTED): DECIMAL	W132 N10611 Grant Drive Germantown, WI 53022	
				.XX ± .02 .XXX ± .01		
	B	2805 UPDATE BRACKET	1/9/12	DSW	FRACTIONAL ± 1/32	KPCUL240A60, 800HP, 240 kVar PANELIZED CAPS
	A	AS BUILT	9/2/11	DSW	ANGULAR ± 1/2°	
NO	REVISION	DATE	BY	SCALE TO FIT	DRN. BY DSW DATE 8/24/11 DWG. NO. 104804DG SIZE C SHT. 1 OF 1	