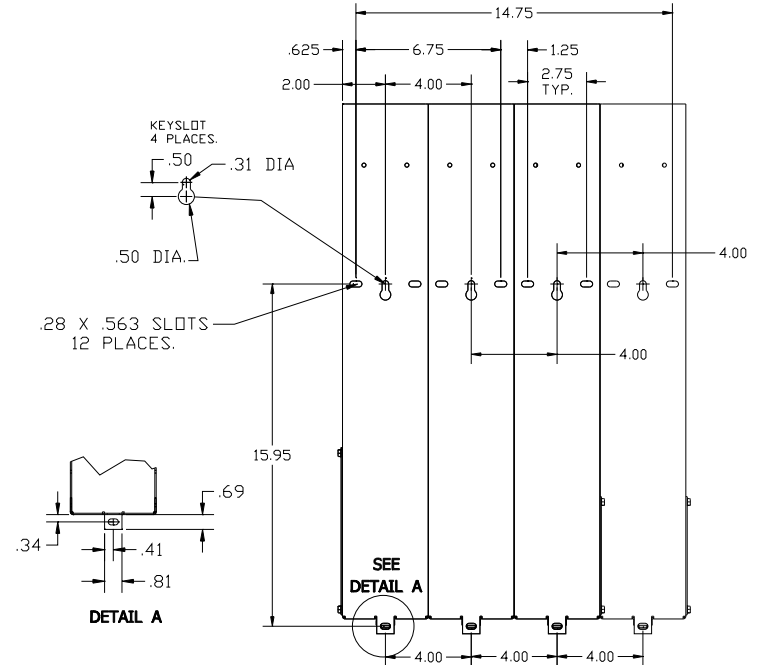
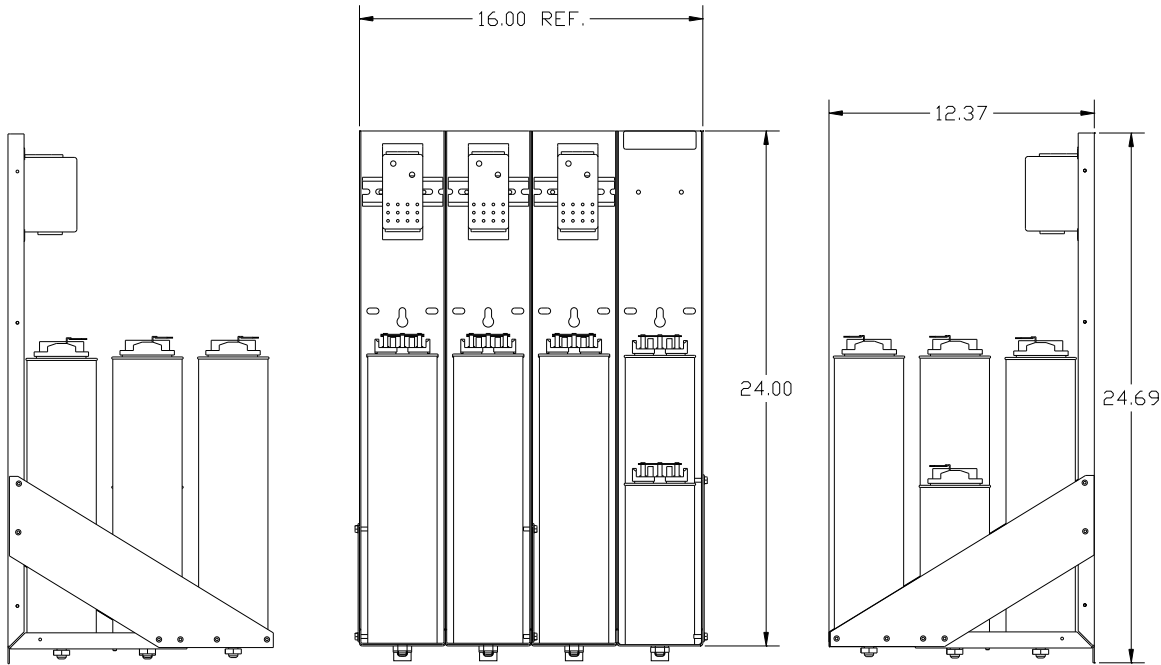
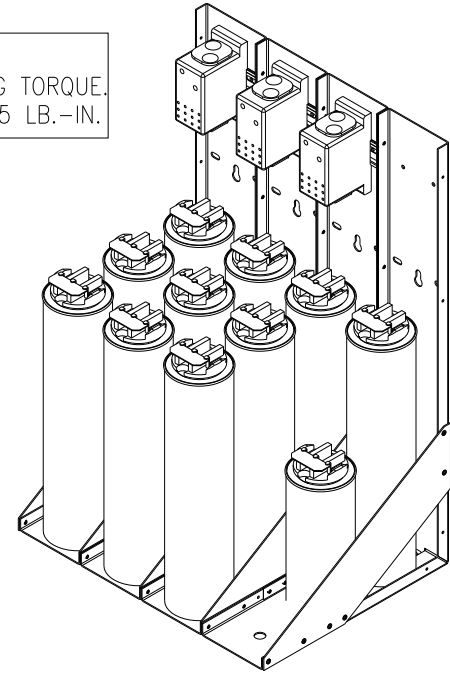
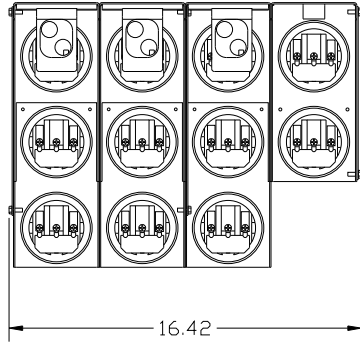


KPCUL210C60, 600V, 210kVar, 700HP.
 APPROX. WEIGHT: 73LBS

CUSTOMER INPUT:
 WIRE RANGE TIGHTENING TORQUE.
 300kcmil to 4AWG. 275 LB.-IN.



NOTE: 27908, Manual KPC Installation Guide
 MUST SHIP WITH EACH ASSEMBLY.

				TOLERANCES (EXCEPT AS NOTED)	TCL ® W132 N10611 Grant Drive Germanstown, WI 53022
				DECIMAL	
				.XX ± .02	KPCUL210C60, 700HP, 210VVar. PANELIZED CAPS
C	BRACKET UPDATE	6/3/13	DSW	.XXX ± .01	
B	2805 UPDATE BRACKET	1/6/12	DSW	FRACTIONAL ± 1/32	
A	AS BUILT	9/8/11	DSW	ANGULAR ± 1/2°	DRN BY DSW DATE 8/30/11 DWG NO. 104848DG
NO	REVISION	DATE	BY	SCALE TO FIT	SIZE C SHT. 1 OF 1