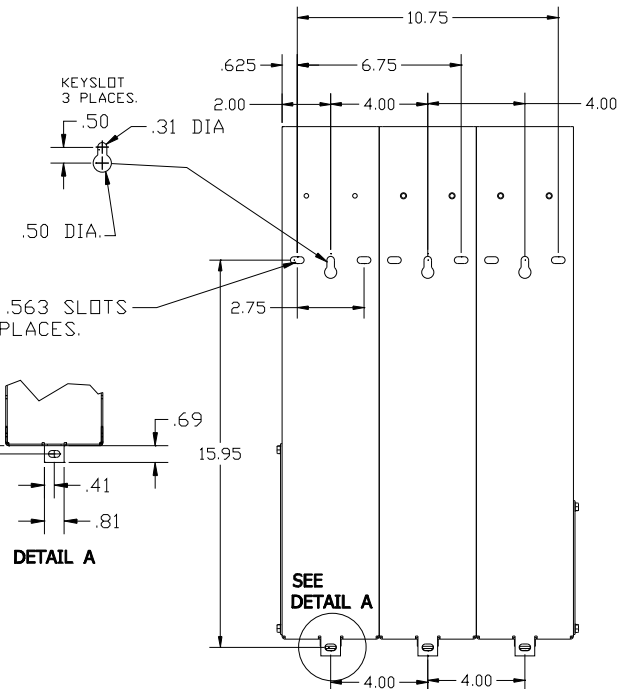
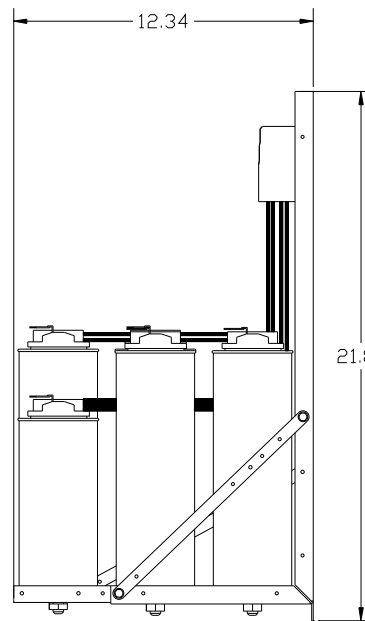
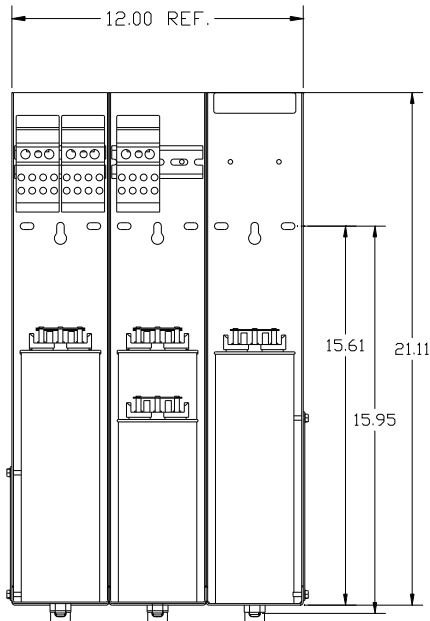
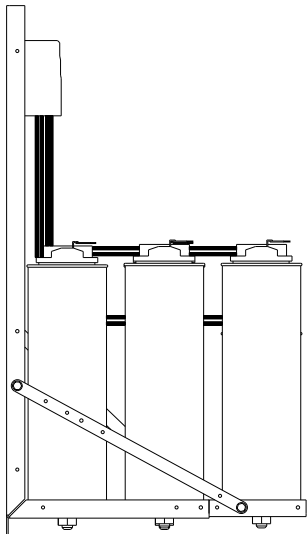
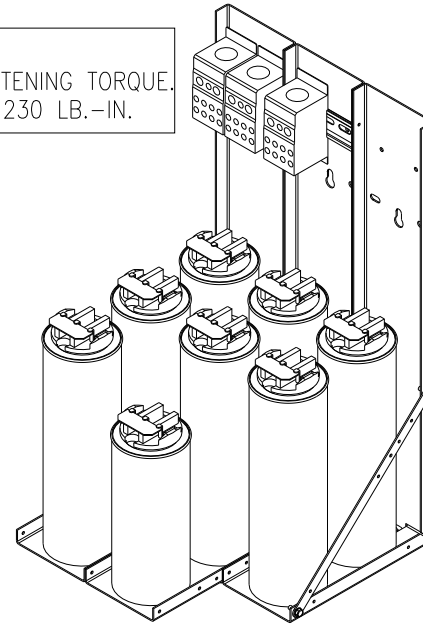
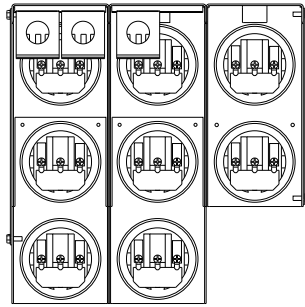


KPCUL150A60, 480V, 150kVar, 500HP.

APPROX. WEIGHT: 45LBS

CUSTOMER INPUT:
WIRE RANGE TIGHTENING TORQUE.
3/0-350mcm. 230 LB.-IN.



DETAIL A

SEE
DETAIL A

NOTE: 27908, Manual KPC Installation Guide
MUST SHIP WITH EACH ASSEMBLY.

TCI, LLC CLAIMS PROPRIETARY RIGHTS IN THE MATERIAL HEREIN DISCLOSED. IT IS SUPPLIED WITHOUT PREJUDICE TO ANY PATENT RIGHTS OF TCI AND MAY NOT BE REPRODUCED OR USED TO MANUFACTURE ANYTHING SHOWN THEREIN WITHOUT WRITTEN PERMISSION FROM TCI.				TOLERANCES (EXCEPT AS NOTED): DECIMAL	W132 N10611 Grant Drive Germantown, WI 53022
				.XX ± .03	
				.XXX ± .01	
				FRACTIONAL ± 1/32	
D	3093 CAP CHG	5/8/14	BMZ	ANGULAR ± 1/2°	DRN BY DSW DATE 8/23/11 DWG. NO. 104801DG SCALE TO FIT SIZE C
NO	REVISION	DATE	BY		SHT. 1 OF 1