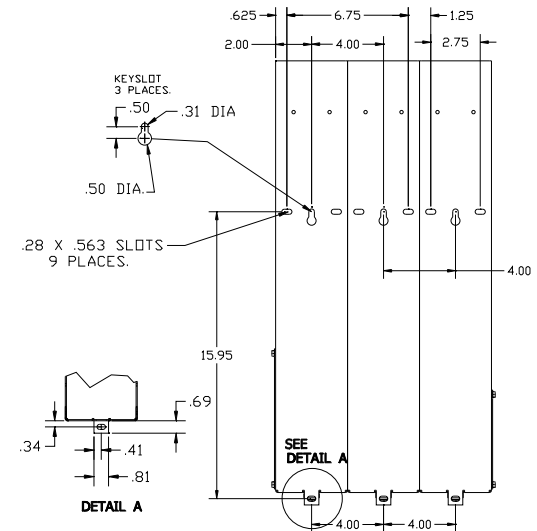
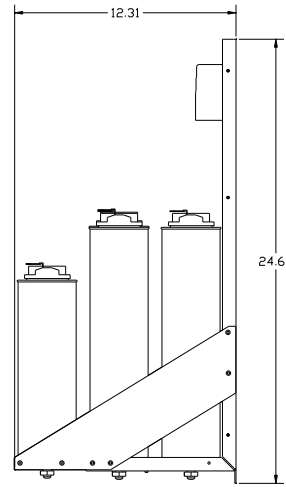
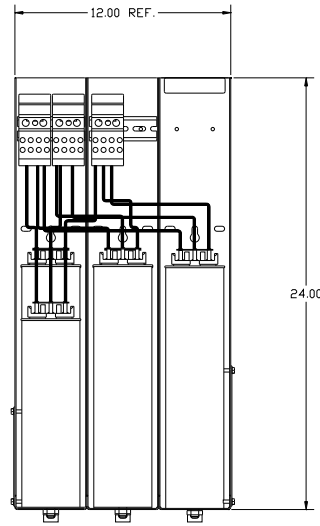
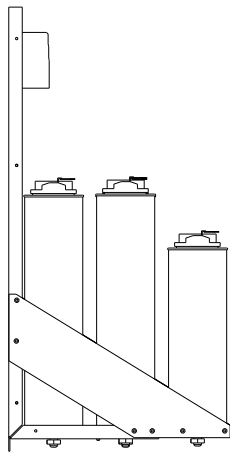
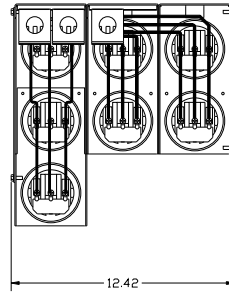
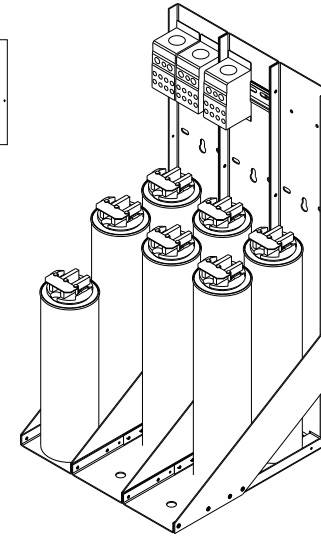


KPCUL135C60, 600V, 135kVar, 450HP.

APPROX. WEIGHT: 48LBS

CUSTOMER INPUT:

WIRE RANGE TIGHTENING TORQUE.
3/0-350cm. 230 LB.-IN.



NOTE: 27908, Manual KPC Installation Guide
MUST SHIP WITH EACH ASSEMBLY.

<p>TCL LLC CLAIMS PROPRIETARY RIGHTS IN THE MATERIAL HEREIN DISCLOSED. IT IS SUPPLIED WITHOUT PREJUDICE TO ANY PATENT RIGHTS OF TCL AND MAY NOT BE REPRODUCED OR USED TO MANUFACTURE ANYTHING SHOWN THEREIN WITHOUT WRITTEN PERMISSION FROM TCL.</p>				TOLERANCES (EXCEPT AS NOTED): DECIMAL	W132 N10611 Grant Drive Germanstown, WI 53022
				.XX ± .02	
	C	BRACKET UPDATE	6/3/13	DSW	.XXX ± .01
	B	2805 UPDATE BRACKET	1/4/12	DSW	FRACTIONAL ± 1/32
	A	AS BUILT	9/8/11	DSW	ANGULAR ± 1/2°
NO	REVISION	DATE	BY	SCALE TO FIT	DRN BY: DSW DATE: 8/30/11 DWG NO: 104845DG SHT. 1 OF 1