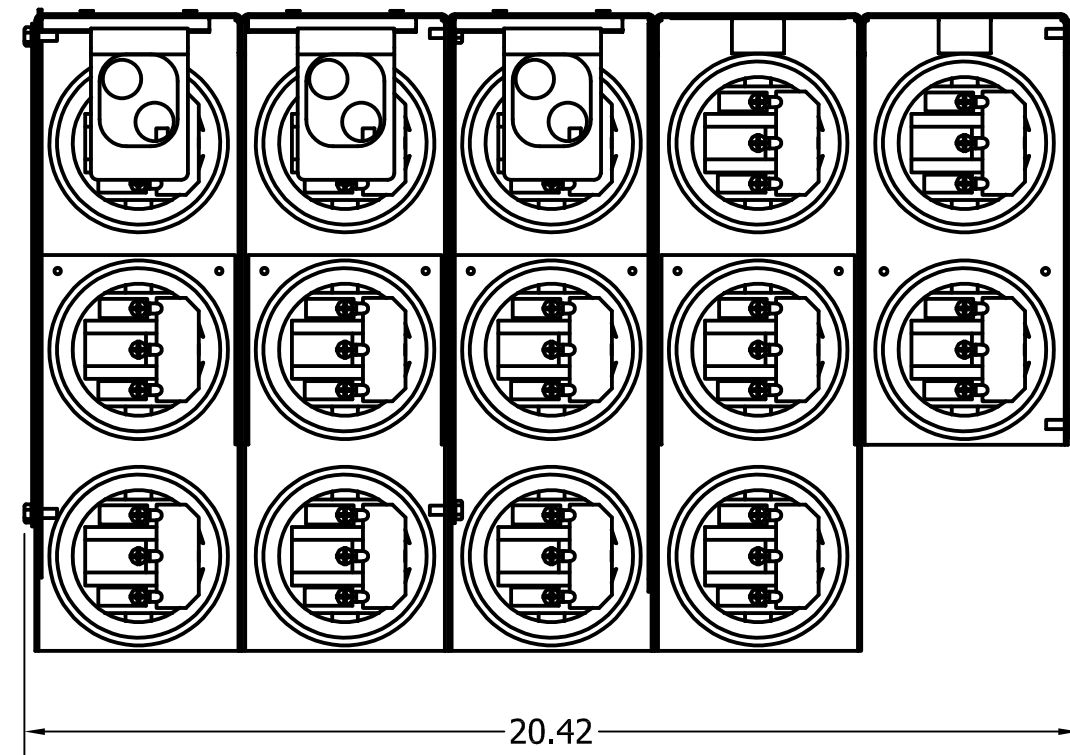
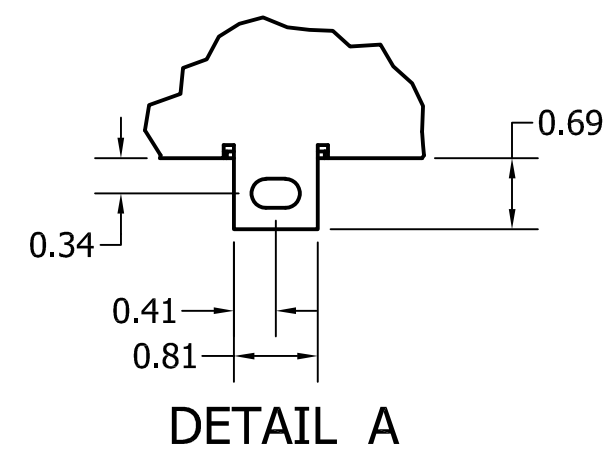
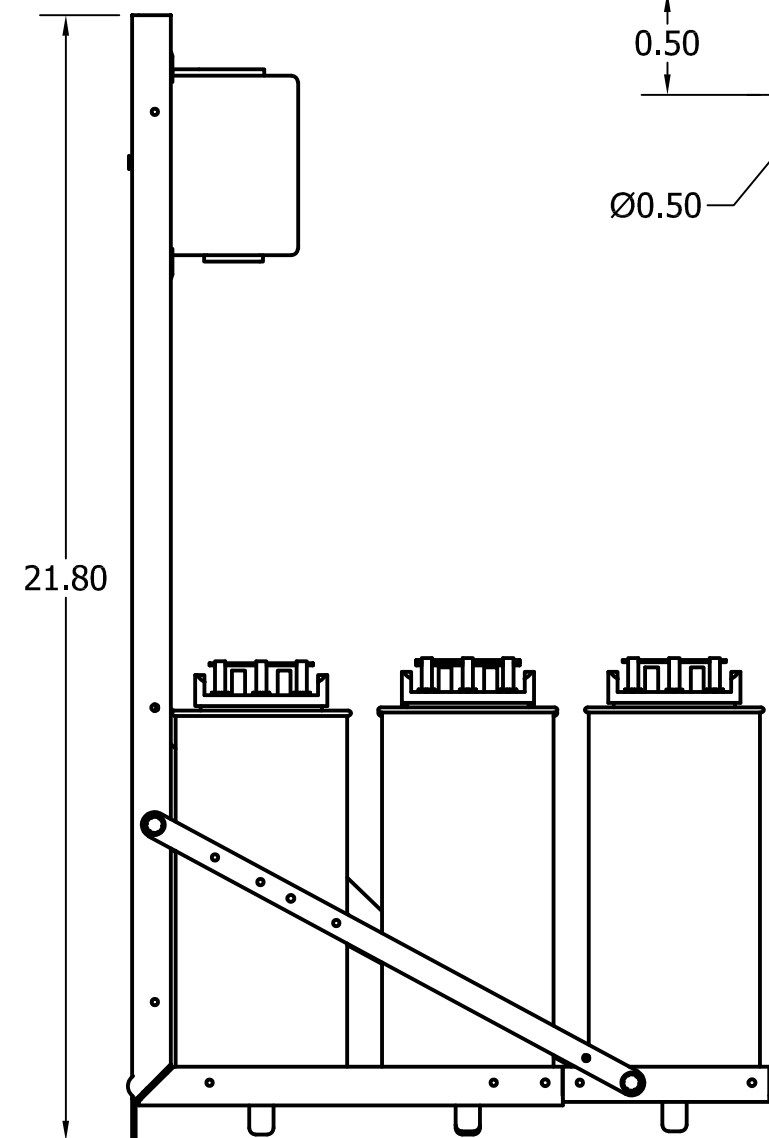
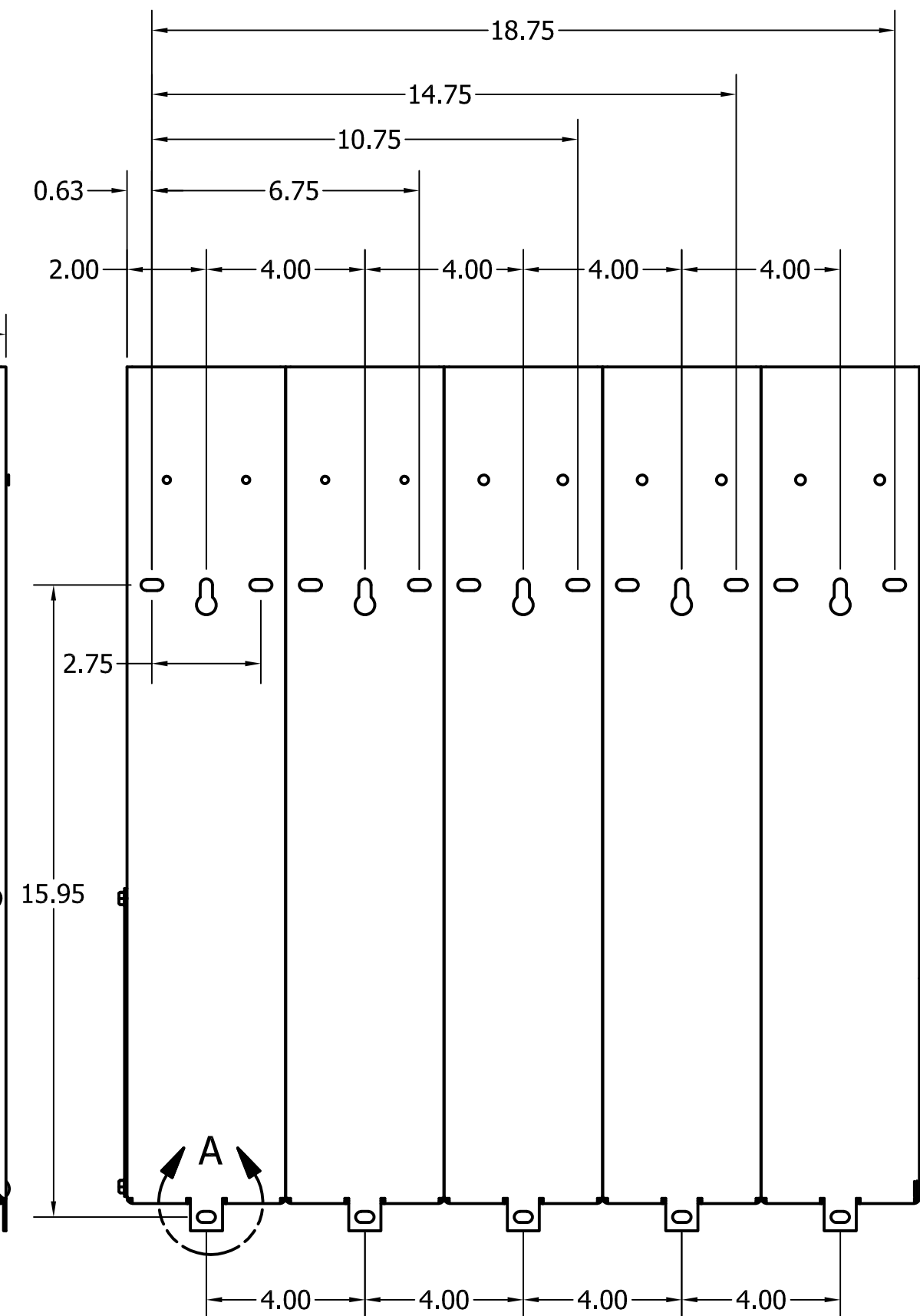
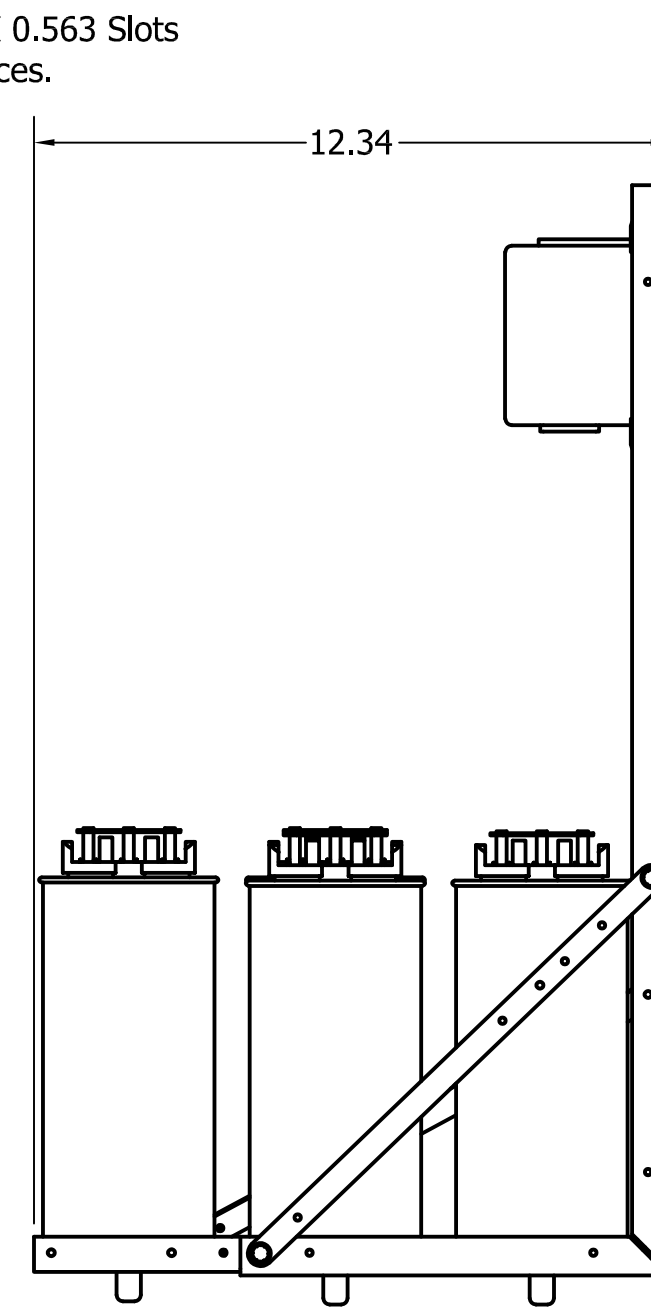
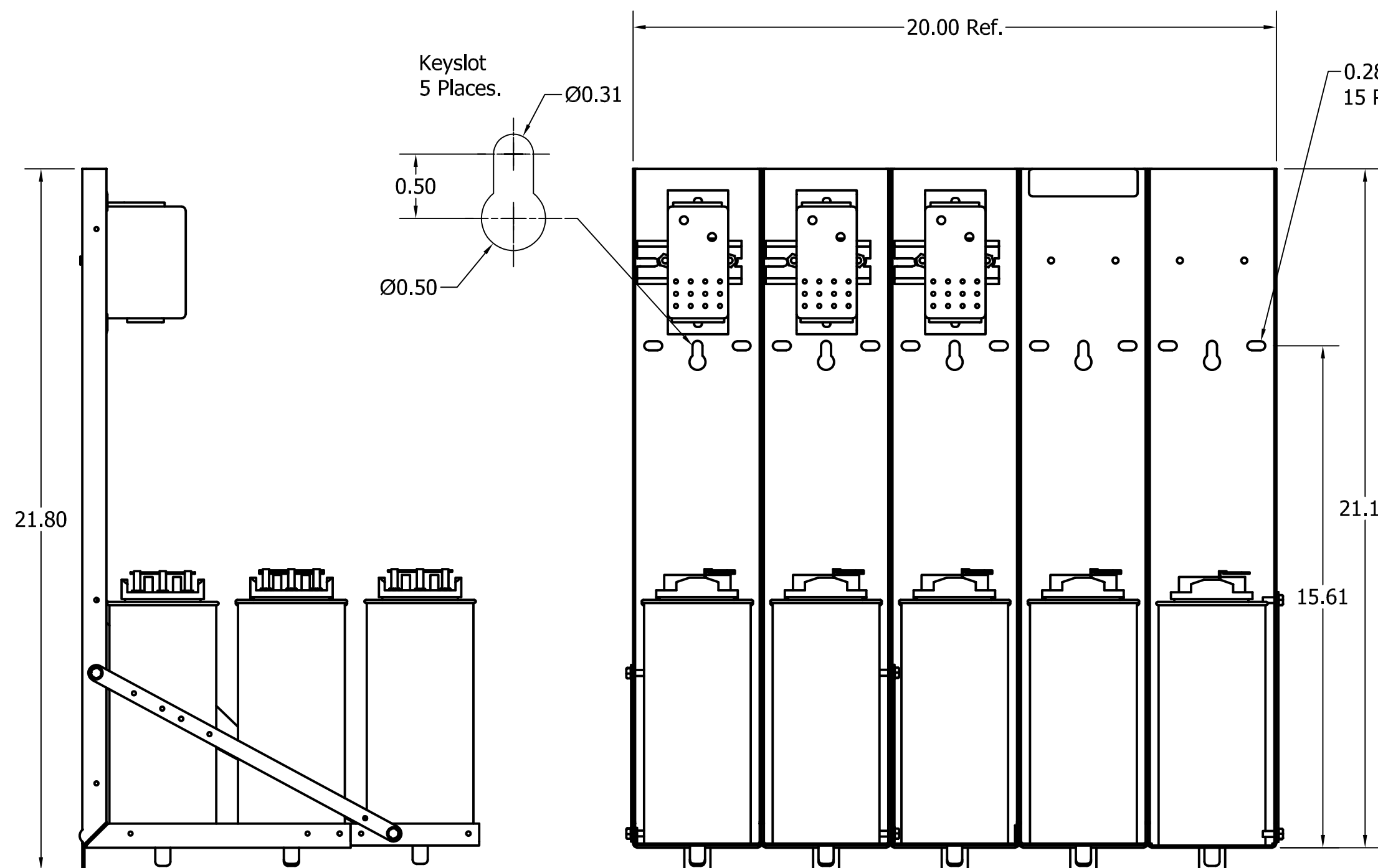
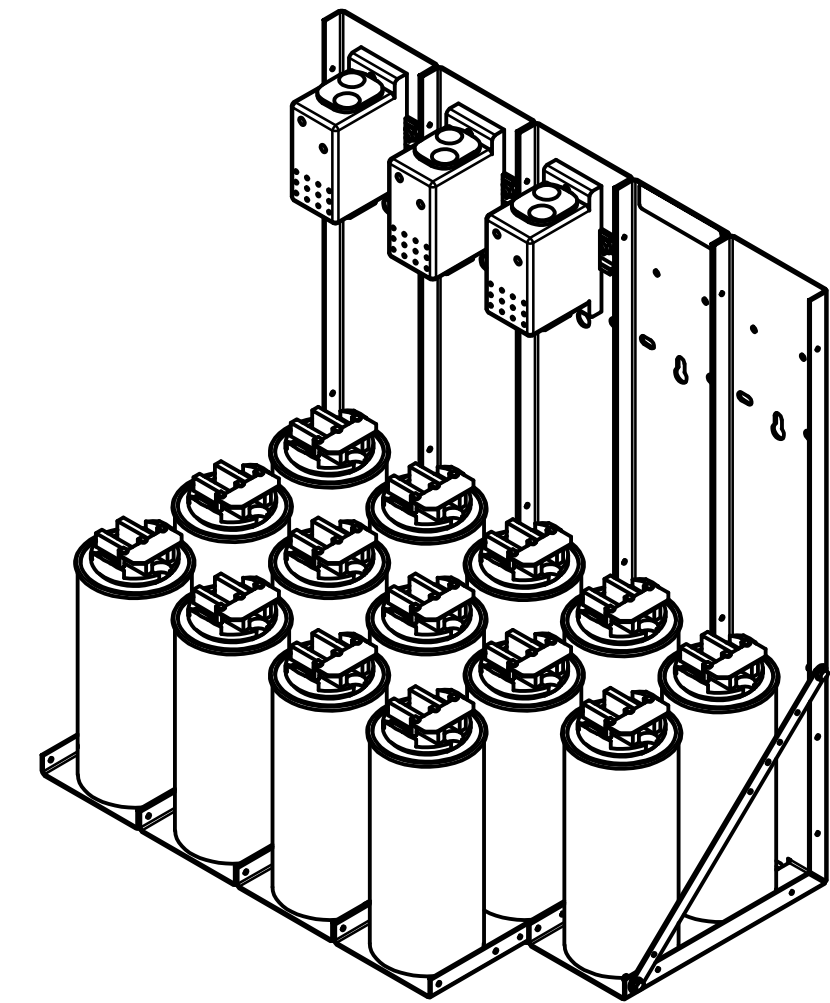


KPCUL135A63, 480V, 135kVar, 900 HP
 Approx. Weight: 70 Lbs

Customer Input	
Wire Range	Tightening Torque
300kcmil - 4 Awg	275 Lb-In



Cap Connection	
Wire Range	Tightening Torque
4-6 Awg.	35 Lb-In
8 Awg.	25 Lb-In
10-14 Awg.	20 Lb-In



Note: 27908, Manual KPC Installation Guide
 MUST SHIP WITH EACH ASSEMBLY.

Material(s) Shall be RoHS Compliant

TCI, LLC CLAIMS PROPRIETARY RIGHTS IN THE MATERIAL HEREIN DISCLOSED. IT IS SUPPLIED WITHOUT PREJUDICE TO ANY PATENT RIGHTS OF TCI AND MAY NOT BE REPRODUCED OR USED TO MANUFACTURE ANYTHING SHOWN THERE IN WITHOUT WRITTEN PERMISSION FROM TCI.				TOLERANCES (EXCEPT AS NOTED)		W132 N10611 Grant Drive Germantown, WI 53022	
				DECIMAL		KPCUL135A63, 135 kVar., 900 HP Panelized Caps	
				.XX ± .25		DRN. BY: JRN	
				.XXX ± .10		DATE: 10/05/17	
				FRACTIONAL		SIZE: 107357DG	
				± 1/16		SCALE: To Fit	
				ANGULAR		APRVD.:	
				± 1°		SHT. 1 OF 1	
A As Designed				10/05/17		JRN	
NO REVISION				DATE		BY	