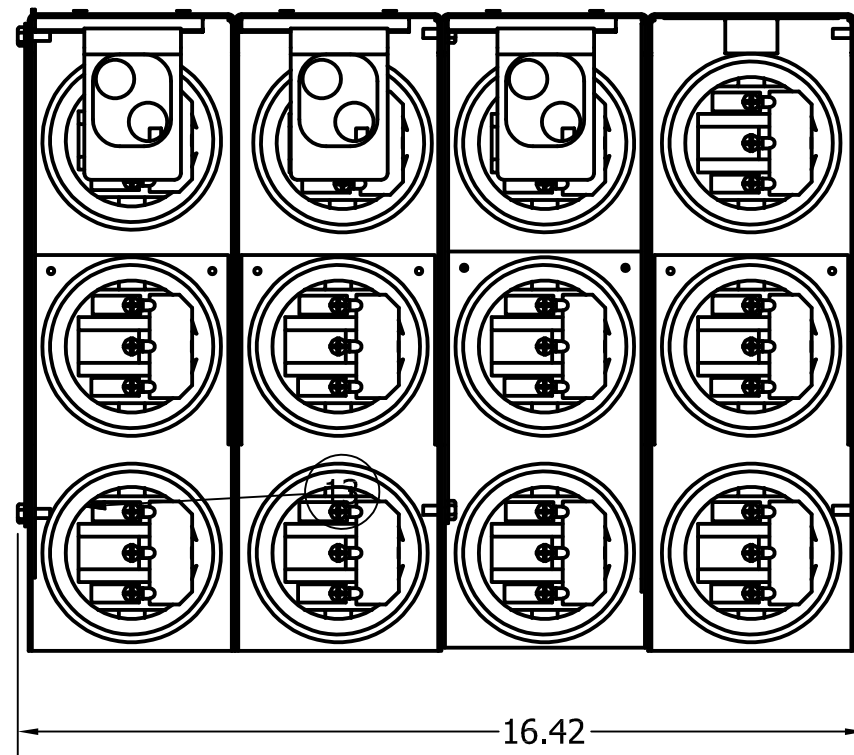
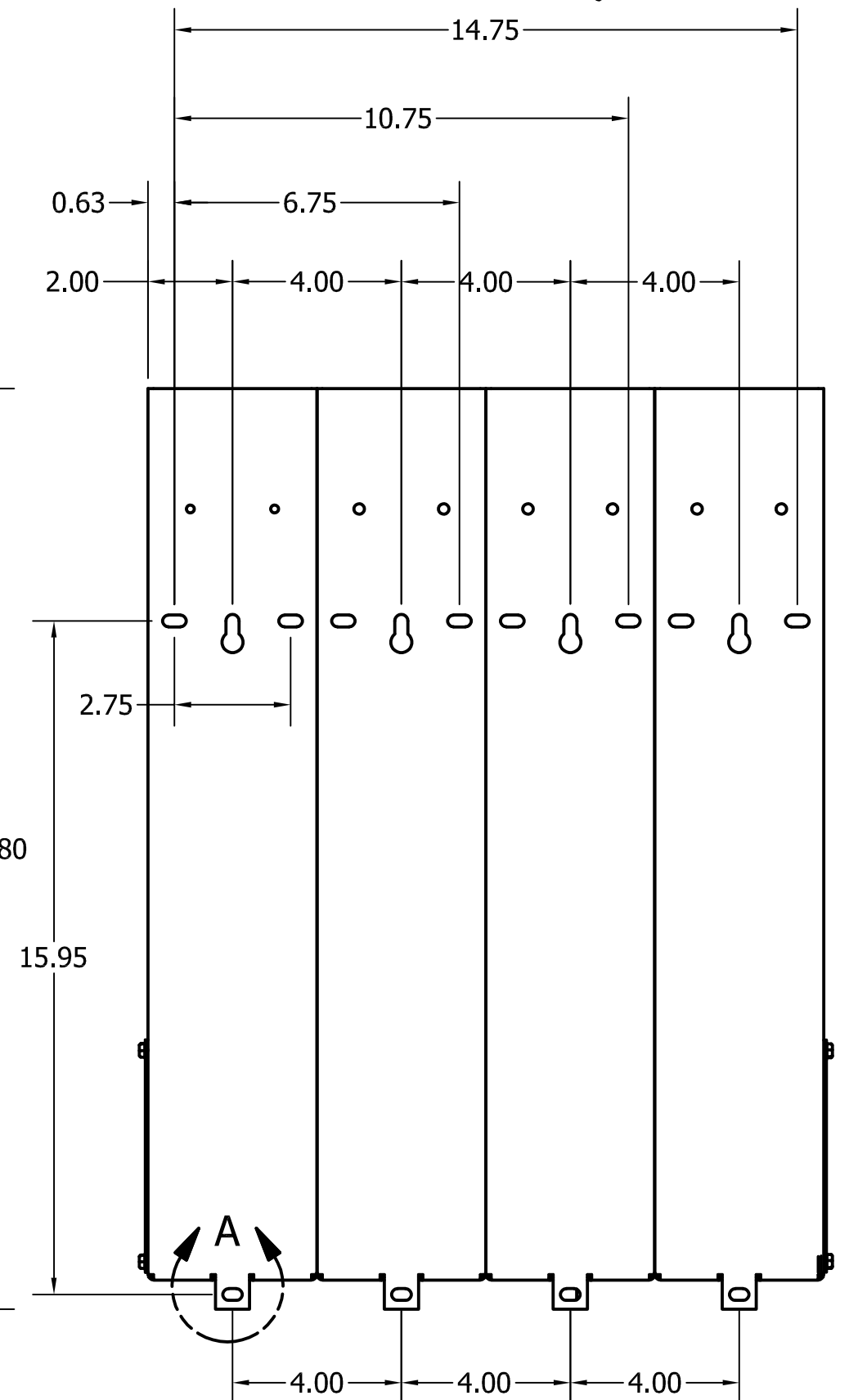
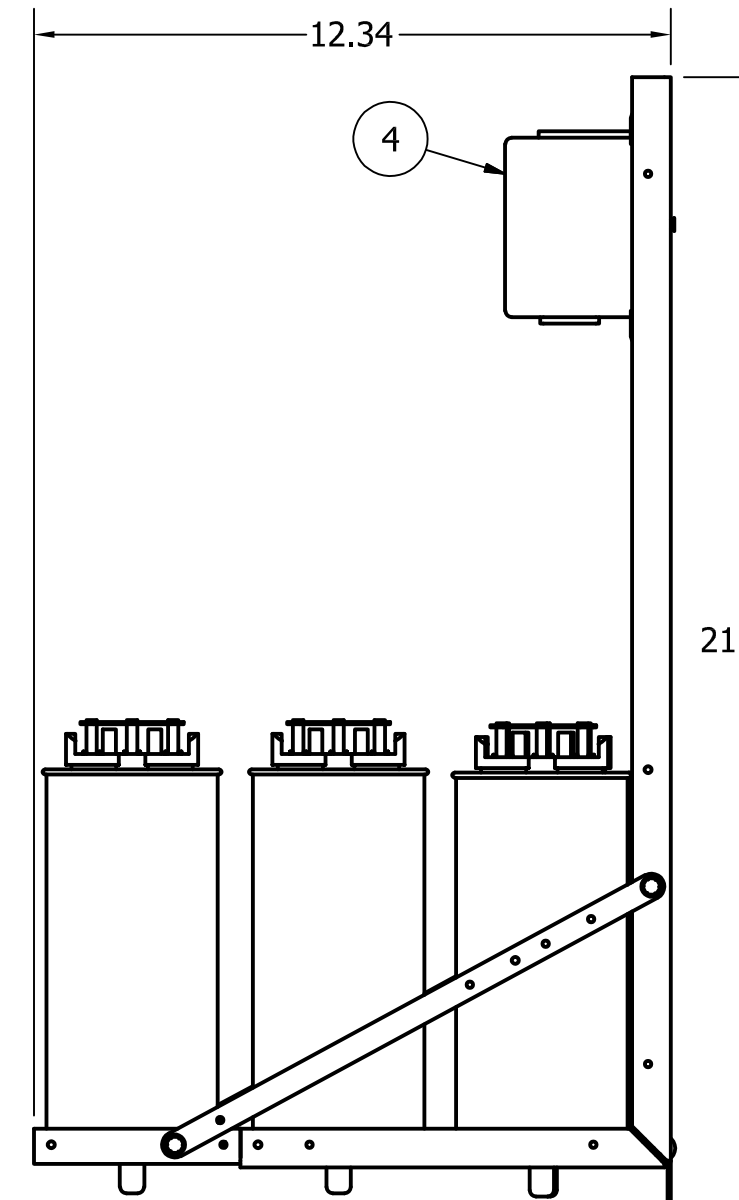
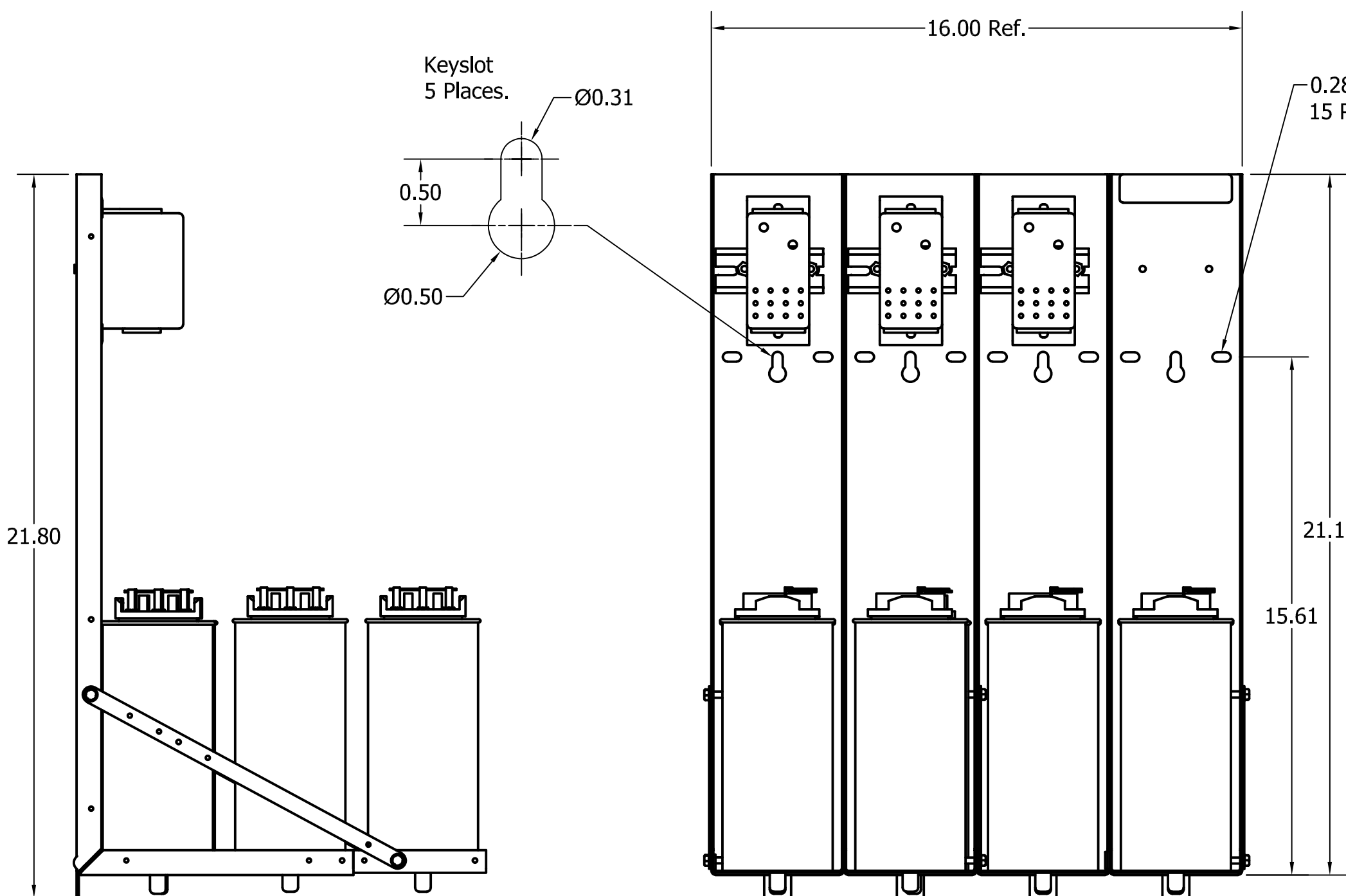
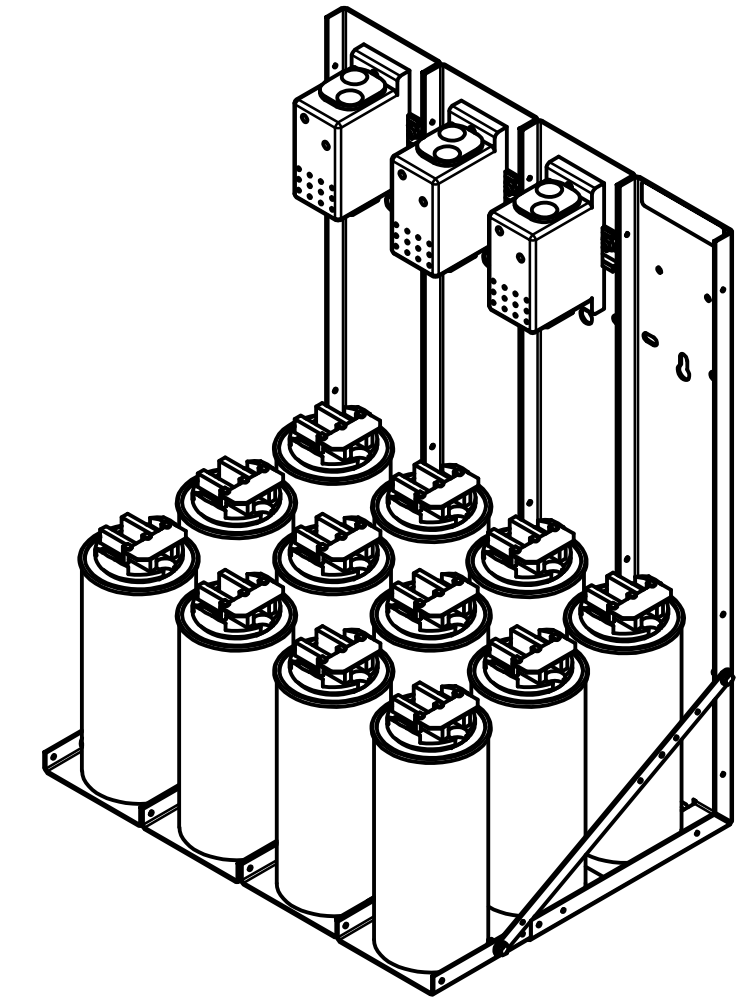


KPCUL120A63, 480V, 120kVar, 800 HP  
 Approx. Weight: 60 Lbs

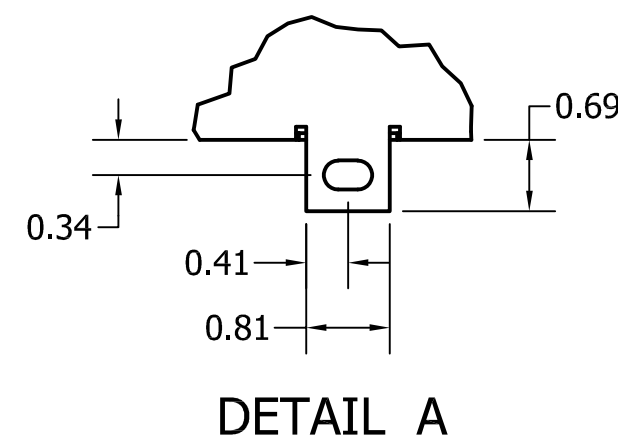
Customer Input	
Wire Range	Tightening Torque
300kcmil - 4 Awg	275 Lb-In




Cap Connection	
Wire Range	Tightening Torque
4-6 Awg.	35 Lb-In
8 Awg.	25 Lb-In
10-14 Awg.	20 Lb-In



Note: 27908, Manual KPC Installation Guide  
 MUST SHIP WITH EACH ASSEMBLY.



Material(s) Shall be RoHS Compliant

TCI, LLC CLAIMS PROPRIETARY RIGHTS IN THE MATERIAL HEREIN DISCLOSED. IT IS SUPPLIED WITHOUT PREJUDICE TO ANY PATENT RIGHTS OF TCI AND MAY NOT BE REPRODUCED OR USED TO MANUFACTURE ANYTHING SHOWN THERE IN WITHOUT WRITTEN PERMISSION FROM TCI.				TOLERANCES (EXCEPT AS NOTED)	 W132 N10611 Grant Drive Germantown, WI 53022  KPCUL120A63, 120 kVar., 800 HP Panelized Caps
				DECIMAL	
				.XX ± .25 .XXX ± .10	
				FRACTIONAL ± 1/16	
	A As Designed	10/05/17	JRN	ANGULAR ± 1°	DRN. BY: JRN DATE: 10/05/17 SCALE: To Fit APPVD: 107356DG SIZE: C
	NO	REVISION	DATE	BY	SHT. 1 OF 1