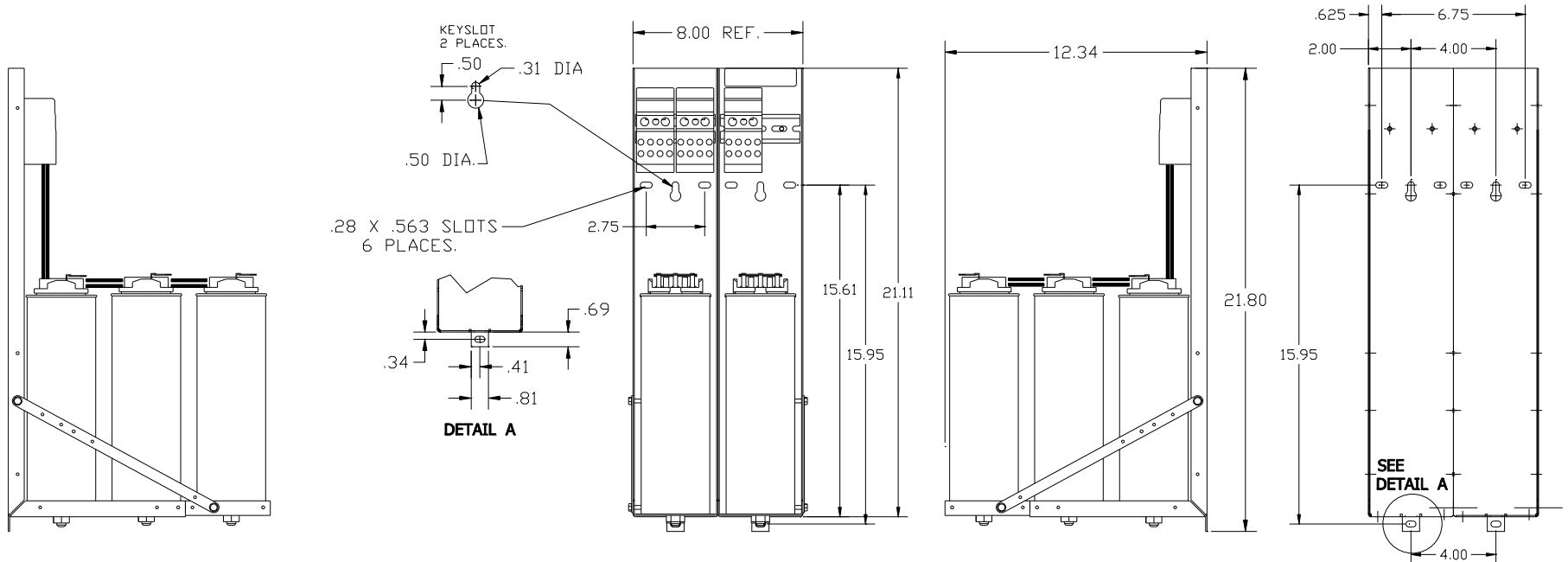
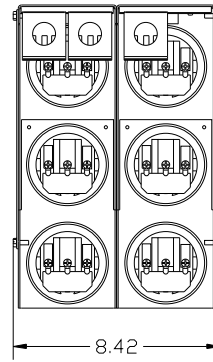
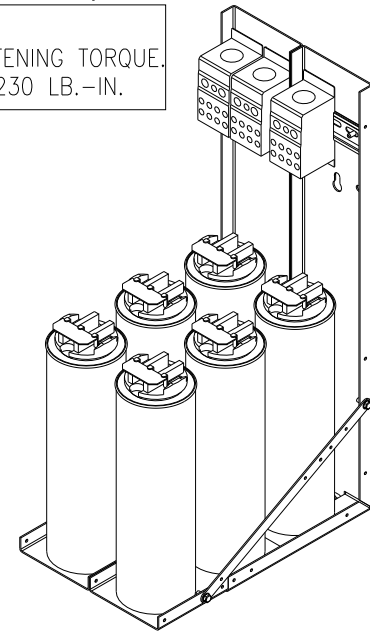



KPCUL120A60, 480V, 120kVar, 400HP.

APPROX. WEIGHT: 34LBS

CUSTOMER INPUT:
WIRE RANGE TIGHTENING TORQUE.
3/0-350mcm. 230 LB.-IN.



NOTE: 27908, Manual KPC Installation Guide
MUST SHIP WITH EACH ASSEMBLY.

TOLERANCES (EXCEPT AS NOTED):				 W132 N10611 Grant Drive Germantown, WI 53022	
DEFINITION:					
			.XX ± .02	KPCUL120A60, 400HP, 120kVar PANELIZED CAPS	
C	3093 CAP CHG	5/8/14	BMZ		DRN BY DSW DATE 8/23/11 DWG. NO. 104799DG SCALE TO FIT SIZE C
B	2805 UPDATE BRACKET	1/9/12	DSW		
A	AS BUILT	9/1/11	DSW		
NO	REVISION	DATE	BY	FRACTIONAL ± 1/32 ANGULAR ± 1/2°	