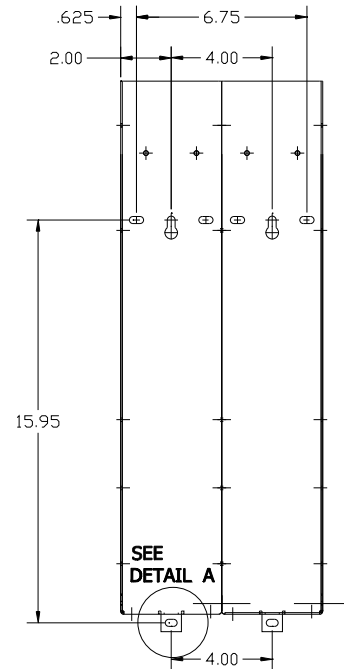
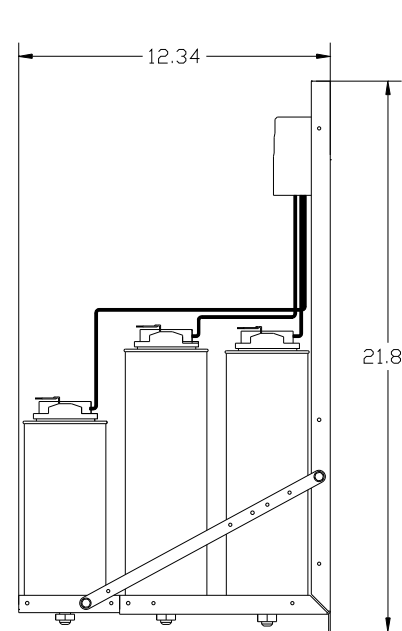
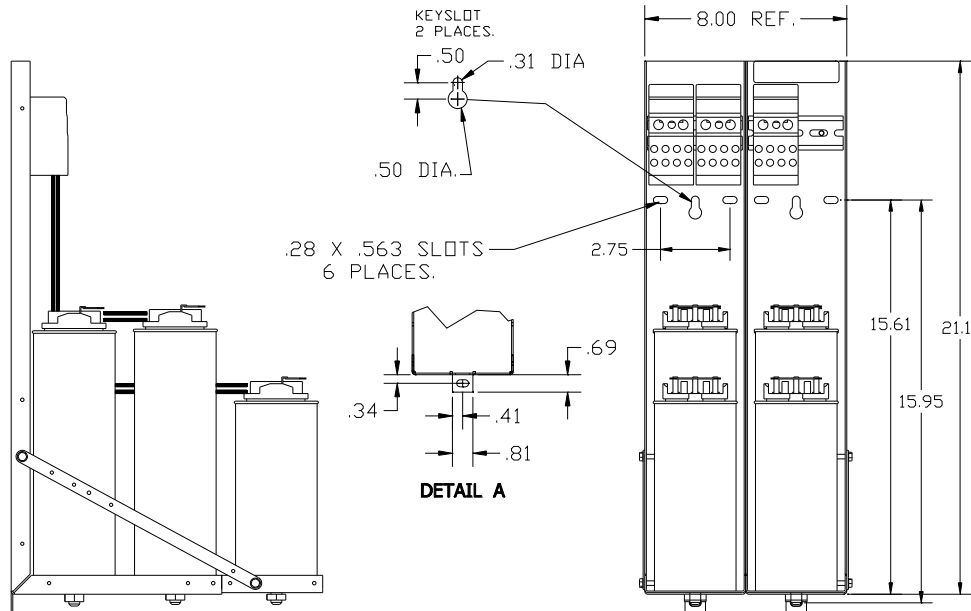
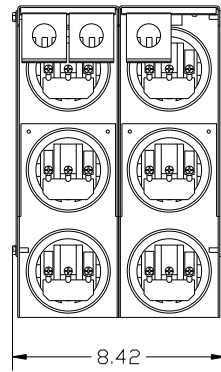
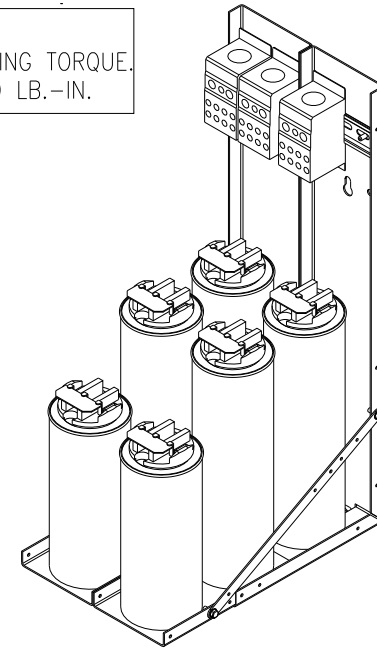



KPCUL105A60, 480V, 105kVar, 350HP.  
 APPROX. WEIGHT: 32LBS

CUSTOMER INPUT:  
 WIRE RANGE TIGHTENING TORQUE.  
 3/0-350mcm. 230 LB.-IN.



NOTE: 27908, Manual KPC Installation Guide  
 MUST SHIP WITH EACH ASSEMBLY.

TCL, LLC CLAIMS PROPRIETARY RIGHTS IN THE MATERIAL HEREIN DISCLOSED. IT IS SUPPLIED WITHOUT PREJUDICE TO ANY PATENT RIGHTS OF TCL AND MAY NOT BE REPRODUCED OR USED TO MANUFACTURE ANYTHING SHOWN THEREIN WITHOUT WRITTEN PERMISSION FROM TCL.				TOLERANCES (EXCEPT AS NOTED): DECIMAL	 W132 N10611 Grant Drive Germantown, WI 53022  <b>KPCUL105A60, 350HP, 105kVar          PANELIZED CAPS</b>
				.XX ± .03	
				.XXX ± .01	
				FRACTIONAL ± 1/32 ANGULAR ± 1/2°	
	D 3093 CAP CHG	5/8/14	BMZ	DRN BY DSW DATE 8/23/11 DWG. NO. 104798DG	
	NO REVISION	DATE	BY	SCALE TO FIT SIZE C	