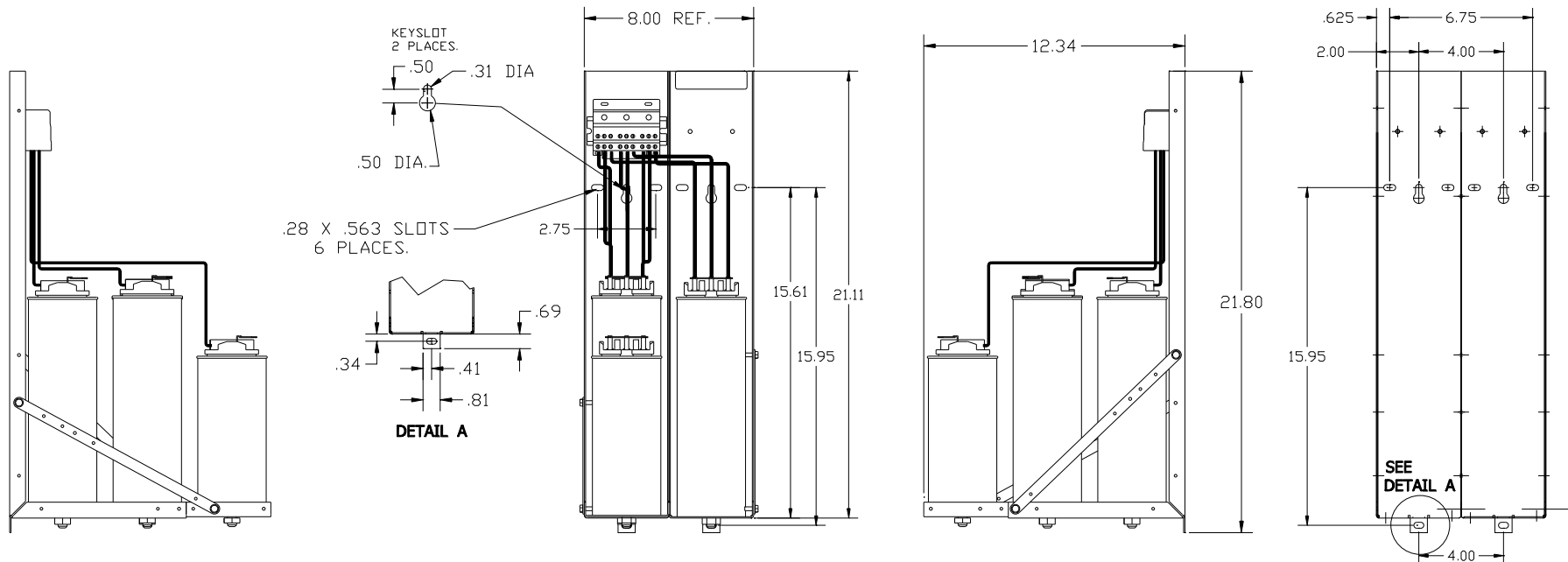
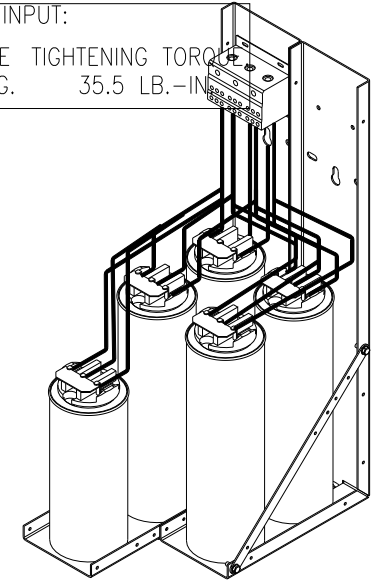
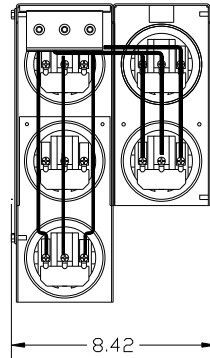


KPCUL090A60, 480V, 90kVar, 300HP.

APPROX. WEIGHT: 27LBS

CUSTOMER INPUT:

WIRE RANGE TIGHTENING TORQUE
8-2/0 AWG. 35.5 LB.-IN



NOTE: 27908, Manual KPC Installation Guide
MUST SHIP WITH EACH ASSEMBLY.

<p>TCL, LLC CLAIMS PROPRIETARY RIGHTS IN THE MATERIAL HEREIN DISCLOSED. IT IS SUPPLIED WITHOUT PREJUDICE TO ANY PATENT RIGHTS OF TCL AND MAY NOT BE REPRODUCED OR USED TO MANUFACTURE ANYTHING SHOWN THEREIN WITHOUT WRITTEN PERMISSION FROM TCL.</p>				TOLERANCES (EXCEPT AS NOTED): DECIMAL	<p>TCL® W132 N10611 Grant Drive Germantown, WI 53022</p> <p>KPCUL090A60, 300HP, 90kVar PANELIZED CAPS</p>
				.XX ± .03	
				.XXX ± .01	
				FRACTIONAL ± 1/32 ANGULAR ± 1/2°	
D 3093 CAP CHG	5/8/14	BMZ		DRN BY DSW DATE 8/23/11 DWG. NO. 104797DG	
NO REVISION	DATE	BY	SCALE TO FIT	SIZE C SHI. 1 OF 1	