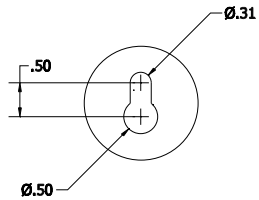
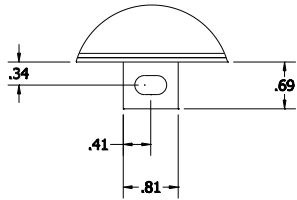


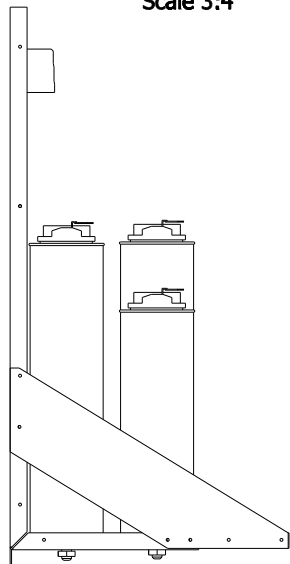
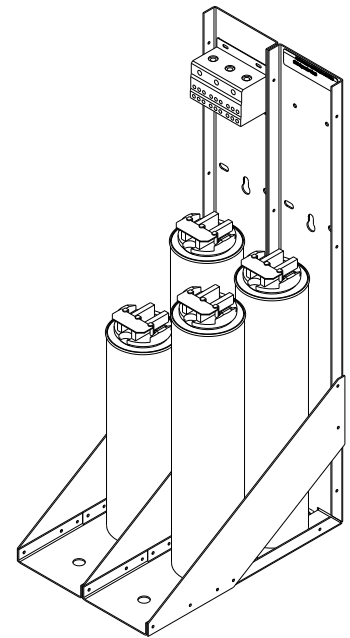
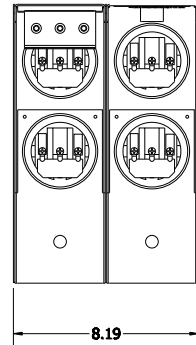
KPCUL075C60
600V
75kvar
250hp
22.2lb



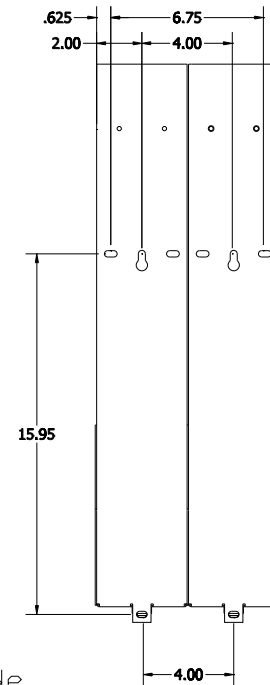
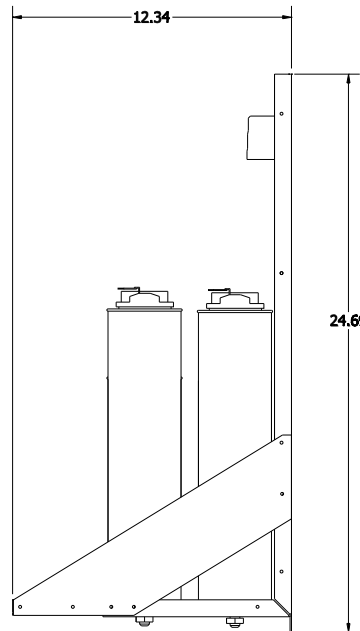
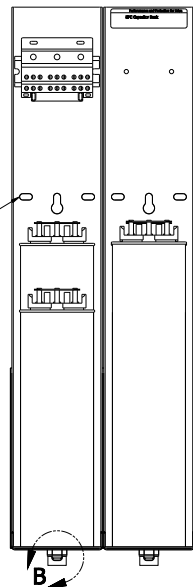
Keyslot × 2
Detail A
Scale 3:4



Detail B
Scale 3:4



.28 × .563 Slots × 6



NOTE: 27908, Manual KPC Installation Guide
MUST SHIP WITH EACH ASSEMBLY.

Note: KPC Capacitor Bank Manual (27908)
Must Ship With Each Assembly

Customer Input
Wire Range: 8-2/0 AWG
Tightening Torque: 35.5in-lb

Cap. Connections
Wire Range: 14-4 AWG
Tightening Torque: 17.5in-lb

				TOLERANCES (EXCEPT AS NOTED)	TCD W132 N10611 GRANT DR. GERMANTOWN, WI. 53022
				DECIMAL	
				XX ± .02	KPCUL075C60, 250HP, 75kVar.
				XXX ± .01	
				FRACTIONAL ± 1/32	PANELIZED CAPS
D	3133 CAPS TO VISHAY	7/2/14	DSW	ANGULAR ± 1/2°	DRN BY DSW DATE 8/30/11 DWG NO. 104841DG
NO	REVISION	DATE	BY	SCALE TO FIT	APRVL C SHT. 1 of 1