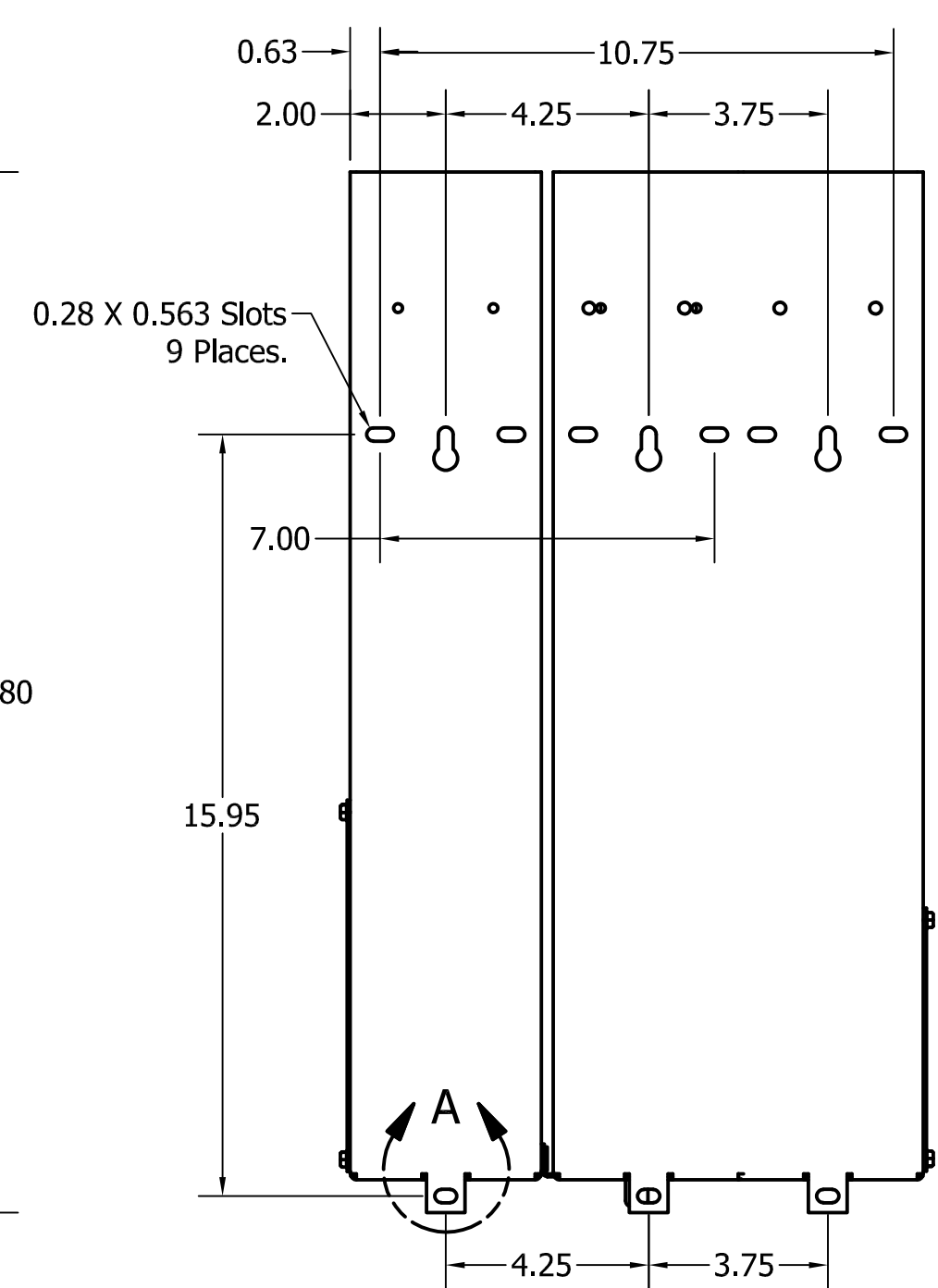
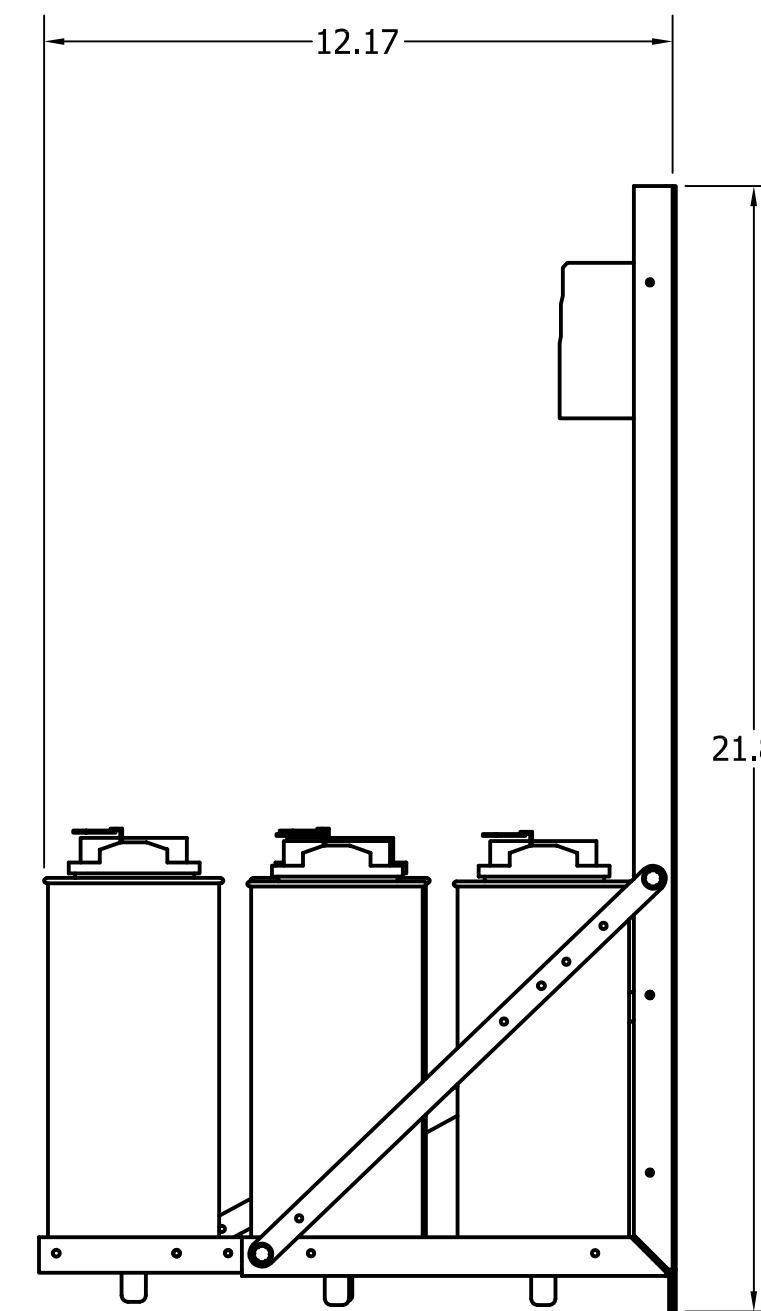
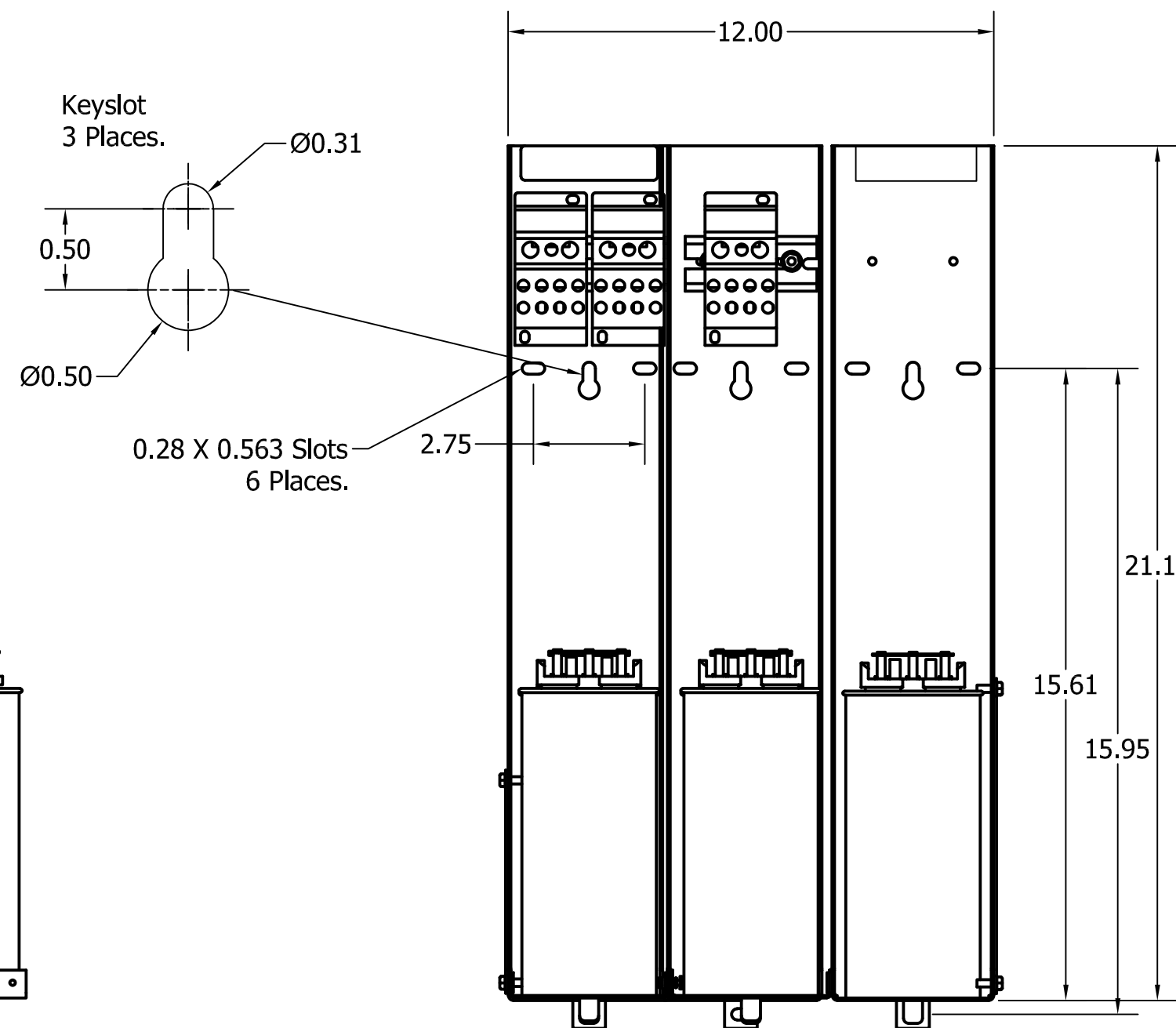
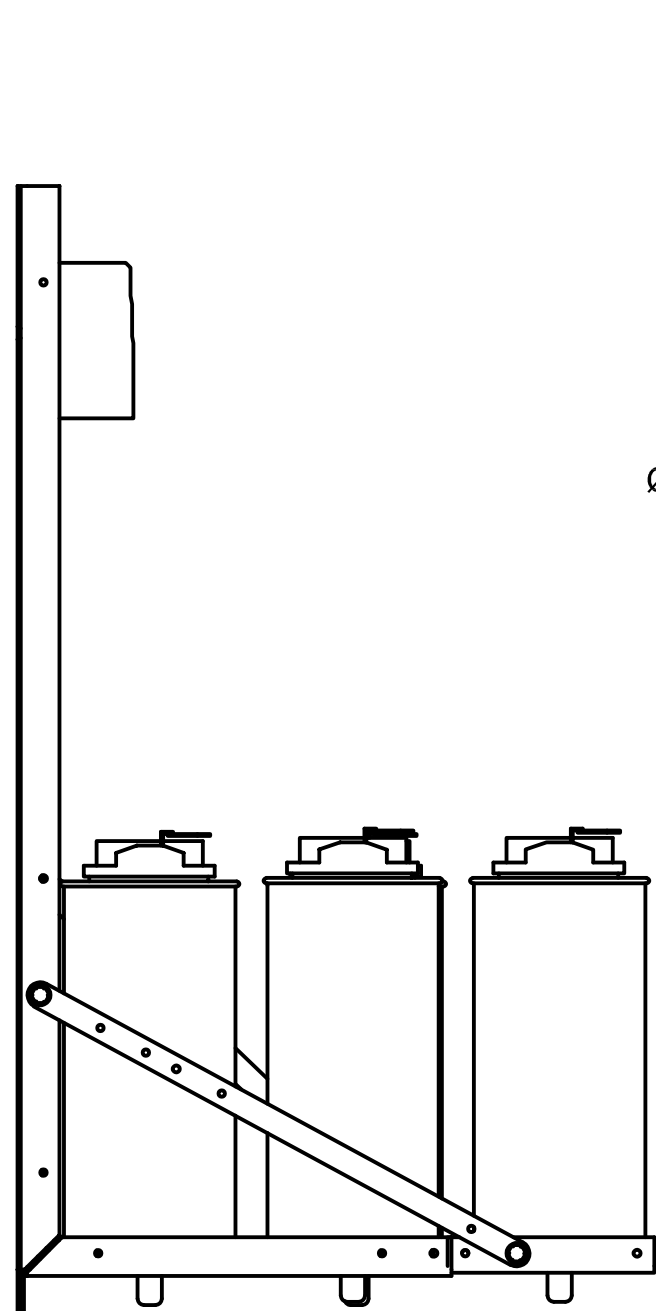
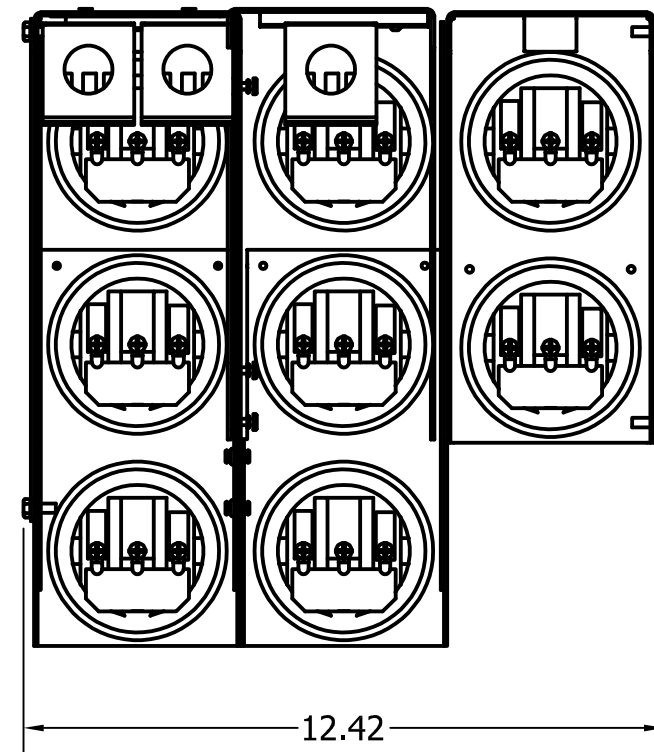
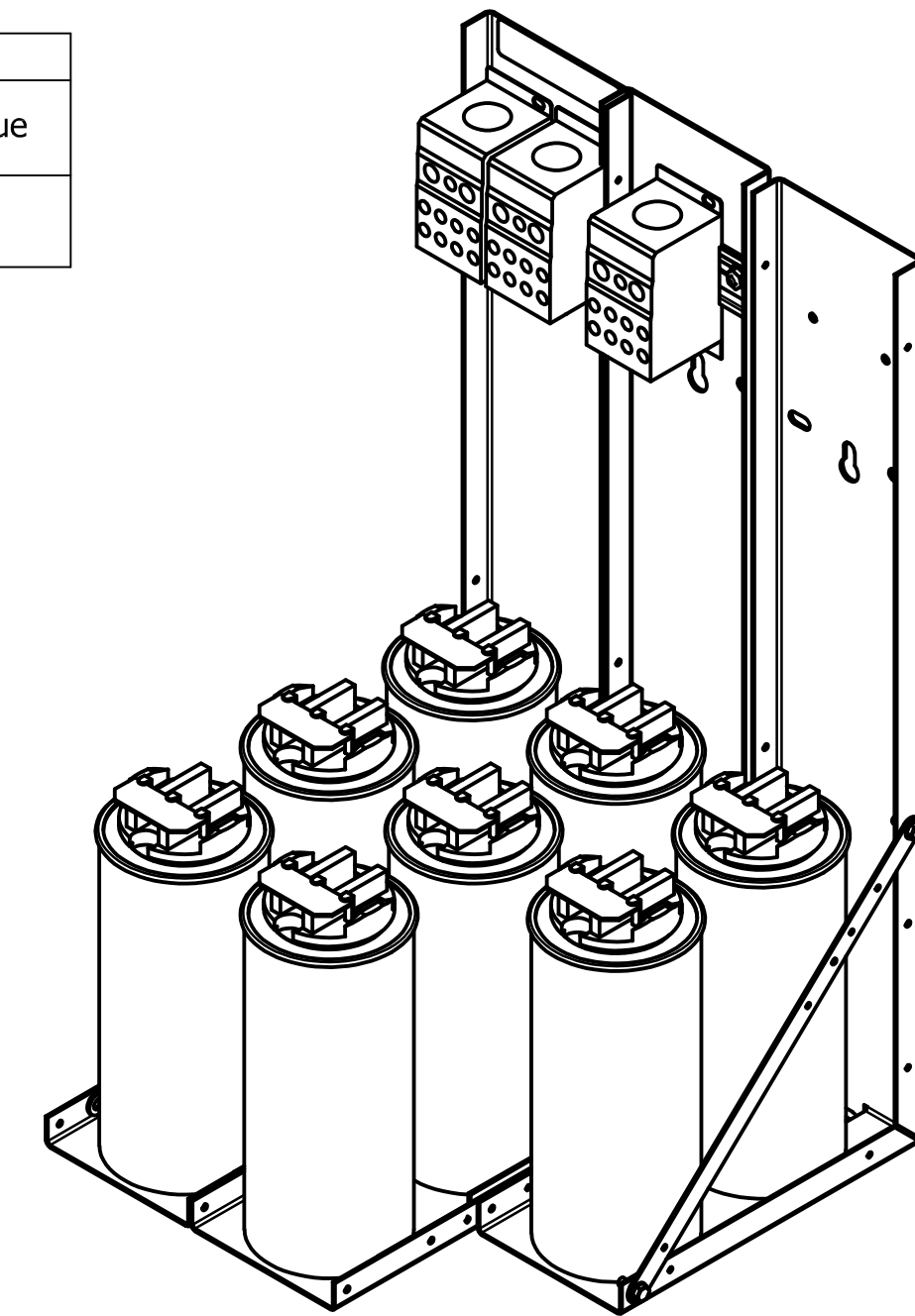


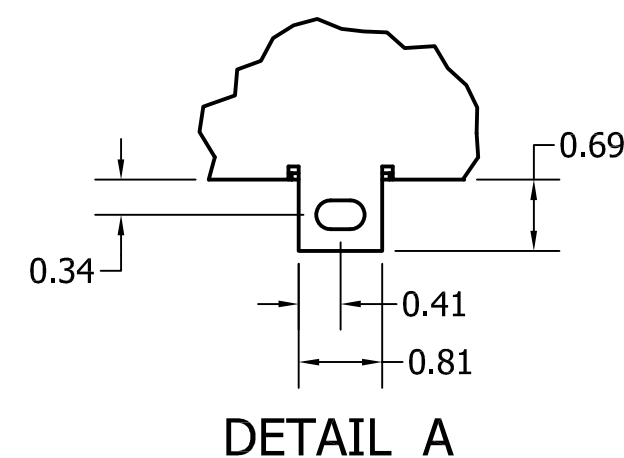
KPCUL075A63, 480V, 75kVar, 500 HP  
 Approx. Weight: 45 Lbs

| Customer Input |                   |
|----------------|-------------------|
| Wire Range     | Tightening Torque |
| 3/0-350mcm.    | 230 Lb-In         |

| Cap Connection |                   |
|----------------|-------------------|
| Wire Range     | Tightening Torque |
| (2x)14-2 Awg.  | 31 Lb-In          |
| (5x)14-6 Awg.  | 17.5 Lb-In        |
| (4x)14-8 Awg.  | 17.5 Lb-In        |



Note: 27908, Manual KPC Installation Guide  
 MUST SHIP WITH EACH ASSEMBLY.



|   |    |          |      |                 |   |   |
|---|----|----------|------|-----------------|---|---|
| TCI, LLC CLAIMS PROPRIETARY RIGHTS IN THE MATERIAL HEREIN DISCLOSED. IT IS SUPPLIED WITHOUT PREJUDICE TO ANY PATENT RIGHTS OF TCI AND MAY NOT BE REPRODUCED OR USED TO MANUFACTURE ANYTHING SHOWN THERE IN WITHOUT WRITTEN PERMISSION FROM TCI. | NO | REVISION | DATE | BY              | TOLERANCES (EXCEPT AS NOTED)                              | <b>TCI</b> W132 N10611 Grant Drive<br>Germantown, WI 53022<br><br>KPCUL075A63, 75 kVar., 500 HP<br>Panelized Caps |
|   |    |          |      |                 | DECIMAL   |   |
|   |    |          |      |                 | .XX ± .25<br>.XXX ± .10                                   |   |
|   |    |          |      |                 | FRACTIONAL<br>± 1/16                                      |   |
|   |    |          |      | ANGULAR<br>± 1° | DRN. BY: JRN<br>DATE: 10/03/17<br>SCALE: To Fit<br>APRVD: | 107349DG<br>SIZE C<br>SHT. 1 OF 1   |