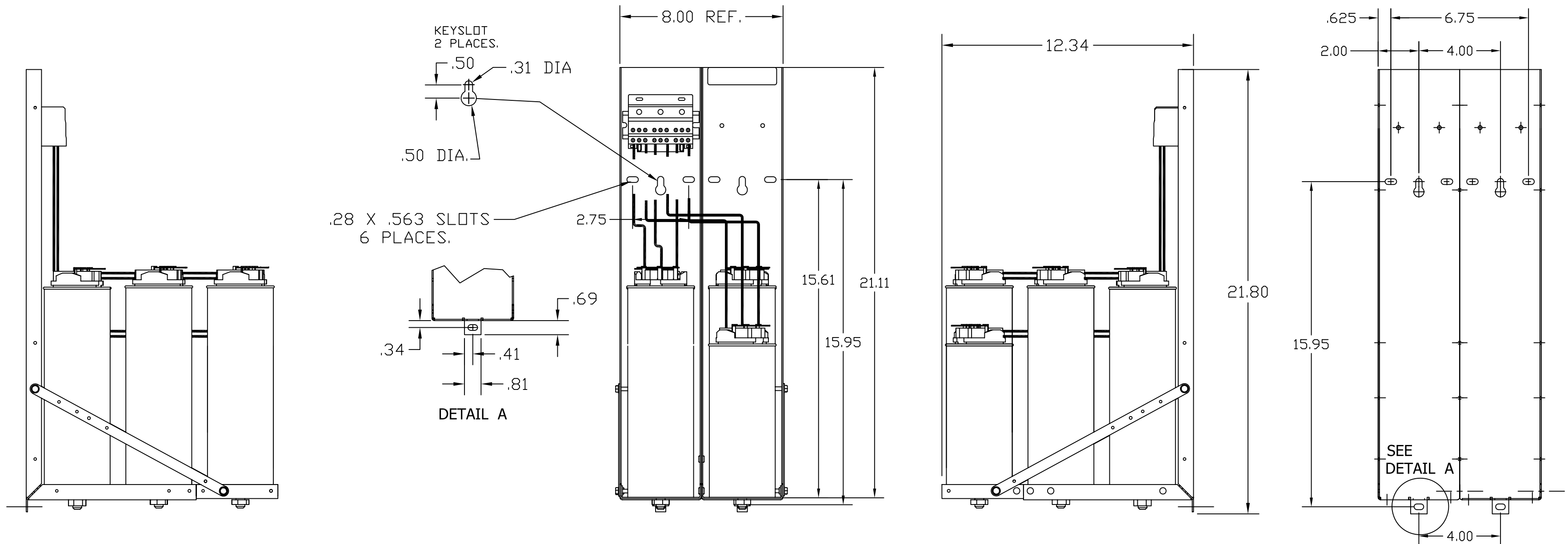
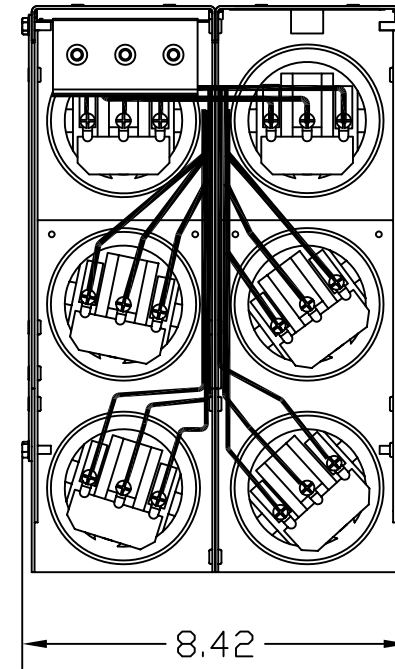
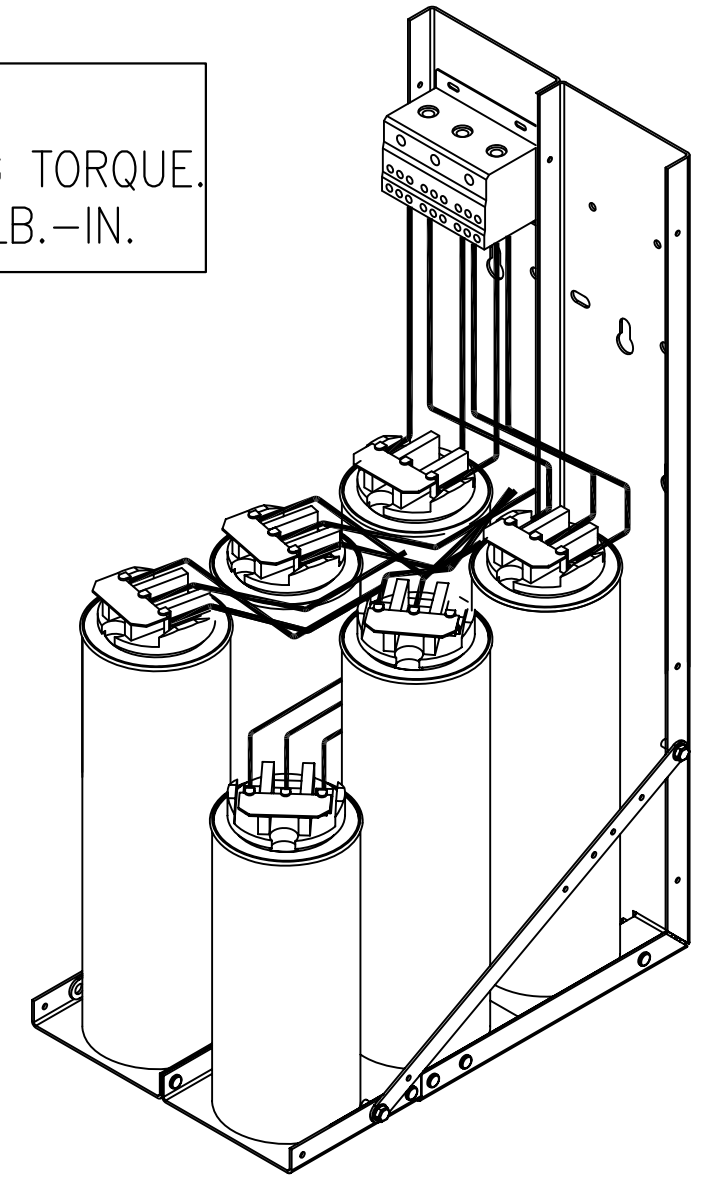


KPCUL064L50, 400V, 160kW, 64.34kVar.

APPROX. WEIGHT: 32LBS

CUSTOMER INPUT:  
WIRE RANGE TIGHTENING TORQUE.  
8-2/0 AWG. 35.5 LB.-IN.



NOTE: 27908, Manual KPC Installation Guide  
MUST SHIP WITH EACH ASSEMBLY.

TCI, LLC CLAIMS PROPRIETARY RIGHTS IN THE MATERIAL HEREIN DISCLOSED. IT IS SUPPLIED WITHOUT PREJUDICE TO ANY PATENT RIGHTS OF TCI AND MAY NOT BE REPRODUCED OR USED TO MANUFACTURE ANYTHING SHOWN THEREIN WITHOUT WRITTEN PERMISSION FROM TCI.				TOLERANCES (EXCEPT AS NOTED):	<b>TCI</b> ® W132 N10611 Grant Drive Germantown, WI 53022  KPCUL064L50, 160kW, 64.34kVAR PANELIZED CAPS
				DECIMAL	
				.XX ± .02	
				.XXX ± .01	
	X	2805 UPDATE BRACKET	1/12/12	DSW	FRACTIONAL ± 1/32
	A	AS BUILT	9/9/11	DSW	ANGULAR ± 1/2°
	NO	REVISION	DATE	BY	
					DRN. BY DSW DATE 8/29/11 DWG. NO. 104822DG
					SCALE TO FIT SIZE C SHT.1 OF 1