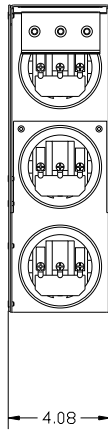
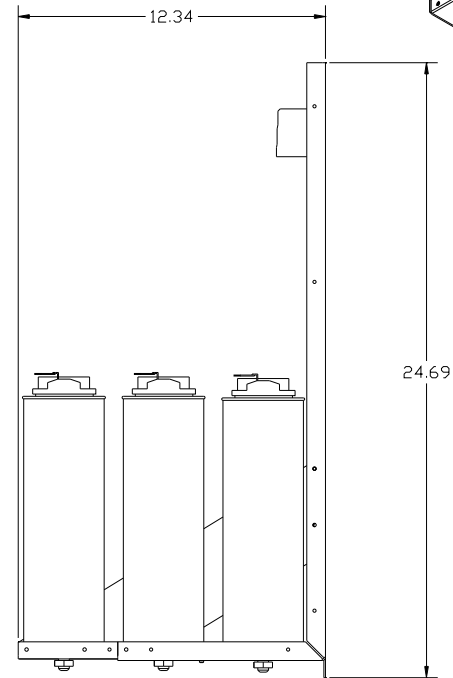
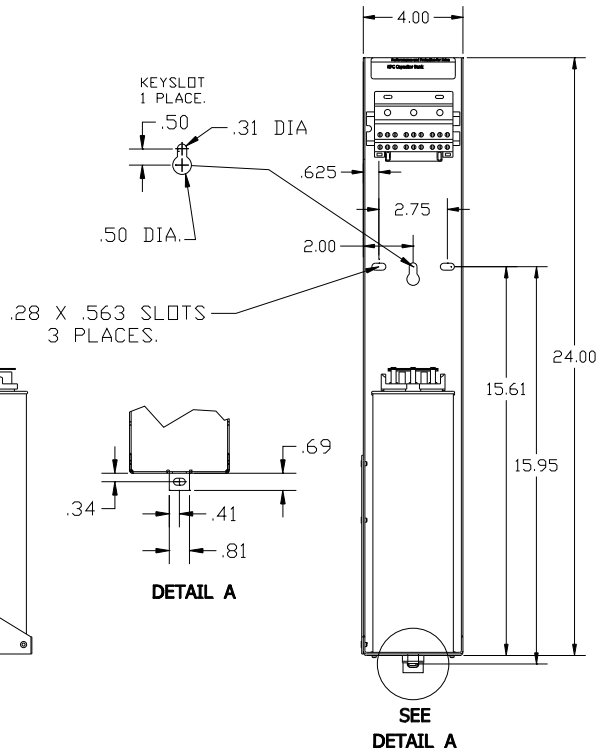
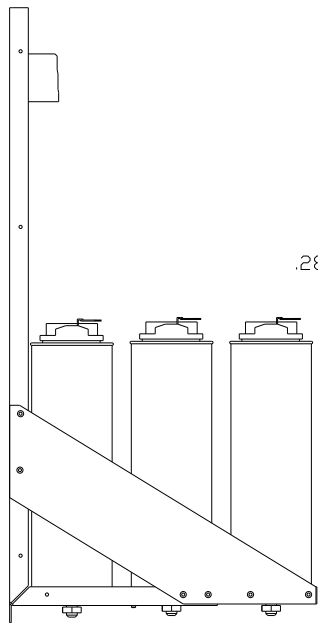
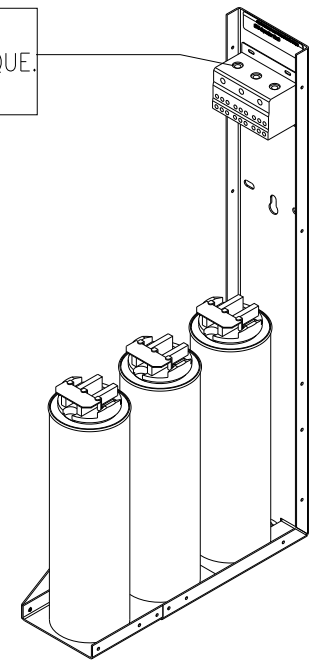


KPCUL060C60, 600V, 60kVar, 200HP.

APPROX. WEIGHT: 18.5LBS



CUSTOMER INPUT:
WIRE RANGE 8-2/0 AWG. TIGHTENING TORQUE. 35.5 LB.-IN.



NOTE: 27908, Manual KPC Installation Guide
MUST SHIP WITH EACH ASSEMBLY.

				TOLERANCES (EXCEPT AS NOTED)		TCI W132 N10611 GRANT DR. GERMANTOWN, WI. 53022	
				DECIMAL		KPCUL060C60, 200HP, 60kVar.	
C	BRACKET UPDATE	6/3/13	JDS	XX ± .02	PANELIZED CAPS		
B	2805 UPDATE BRACKET	1/4/12	DSW	.XXX ± .01			
A	AS BUILT	9/8/11	DSW	FRACTIONAL ± 1/32	DRN BY DSW	DATE 8/30/11	DWG NO. 104840DG
NO	REVISION	DATE	BY	ANGULAR ± 1/2°	SCALE TO FIT	APRVD.	SHT. 1 of 1