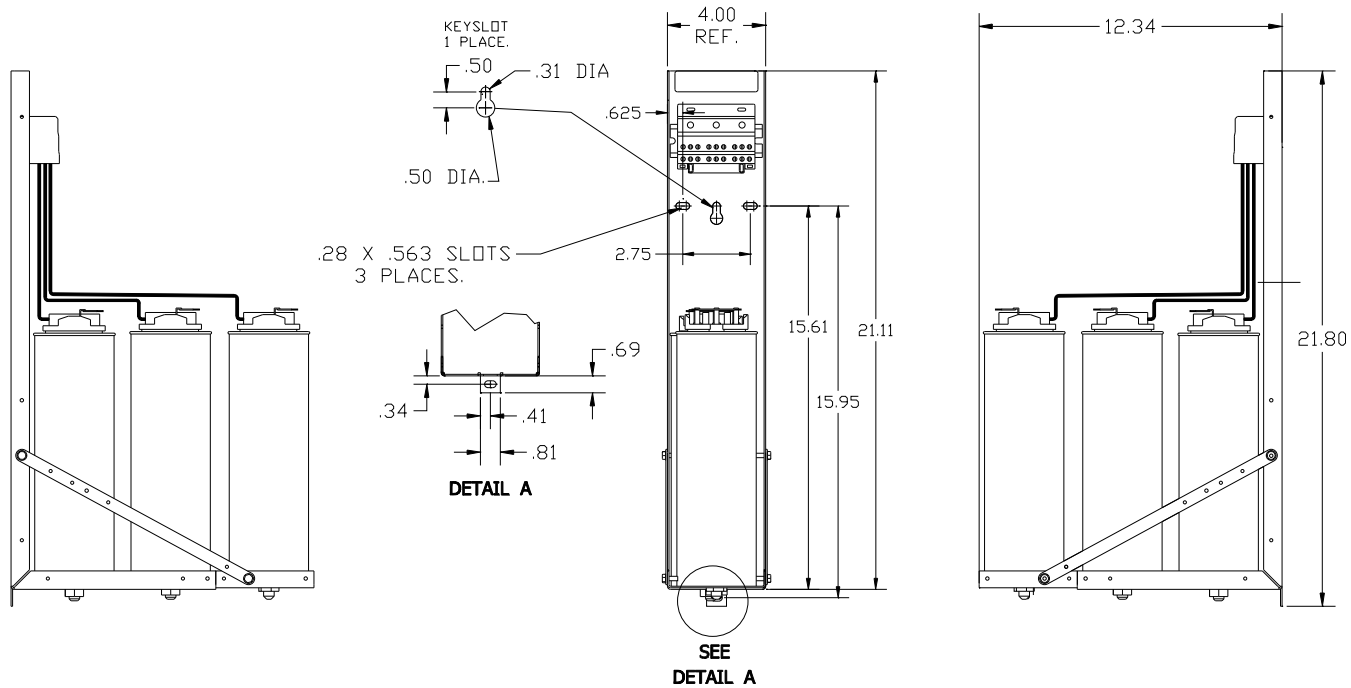
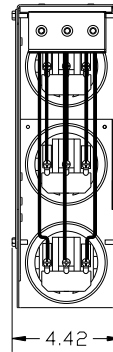
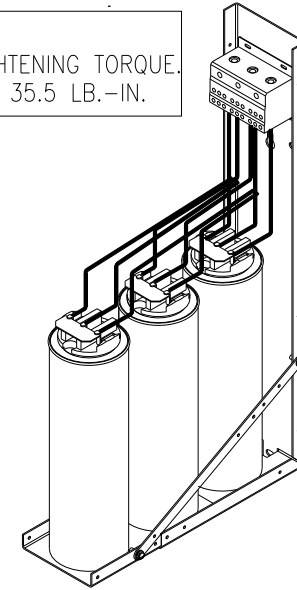


KPCUL060A60, 480V, 60kVar, 200HP.


APPROX. WEIGHT: 17.5LBS

CUSTOMER INPUT:

WIRE RANGE TIGHTENING TORQUE.  
8-2/0 AWG. 35.5 LB.-IN.



NOTE: 27908, Manual KPC Installation Guide  
MUST SHIP WITH EACH ASSEMBLY.

TCL, LLC CLAIMS PROPRIETARY RIGHTS IN THE MATERIAL HEREIN DISCLOSED. IT IS SUPPLIED WITHOUT PREJUDICE TO ANY PATENT RIGHTS OF TCL AND MAY NOT BE REPRODUCED OR USED TO MANUFACTURE ANYTHING SHOWN THEREIN WITHOUT WRITTEN PERMISSION FROM TCL.				TOLERANCES (EXCEPT AS NOTED): DECIMAL .XX ± .03 FRACTIONAL ± 1/32 ANGULAR ± 1/2°		 W132 N10611 Grant Drive Germantown, WI 53022	
C	3093 CAP CHG	5/9/14	BMZ	KPCUL060A60, 200HP, 60kVar PANELIZED CAPS			
B	2805 UPDATE BRACKET	1/9/12	DSW	FRAC ± 1/32			
A	AS BUILT	10/1/11	DSW	DRN. BY	DATE	DWG. NO.	104795DG
NO	REVISION	DATE	BY	SCALE	TO FIT	SIZE	SHT. 1 OF 1