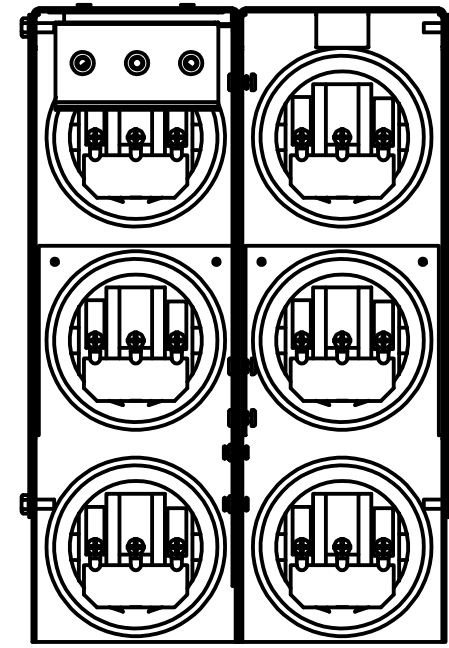
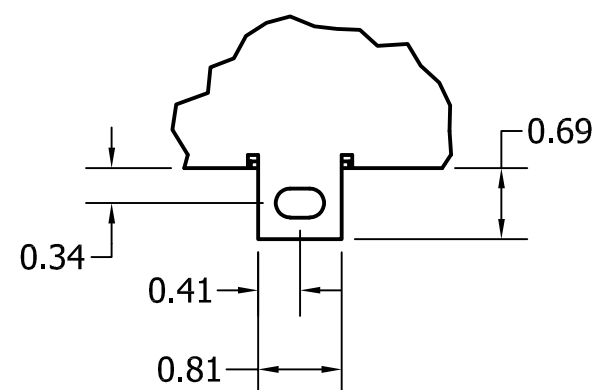
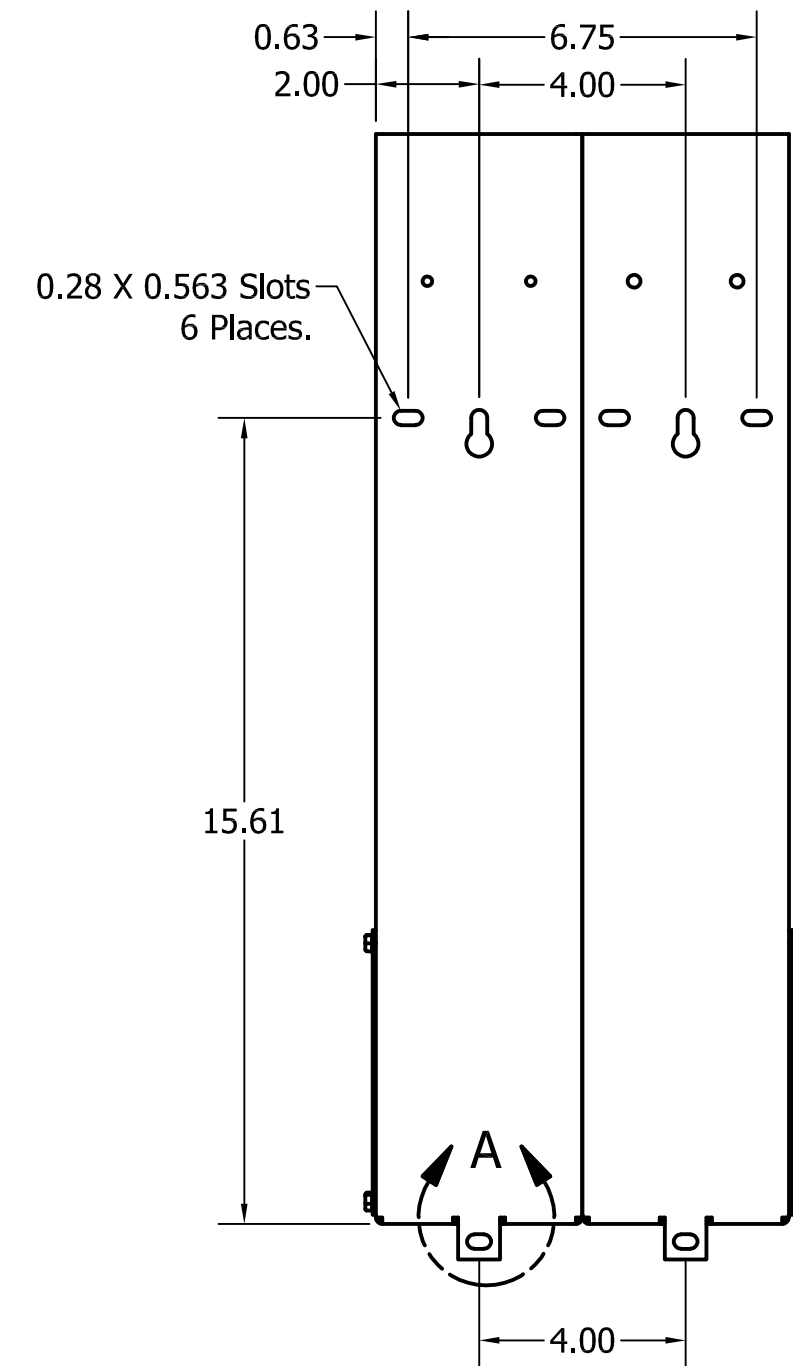
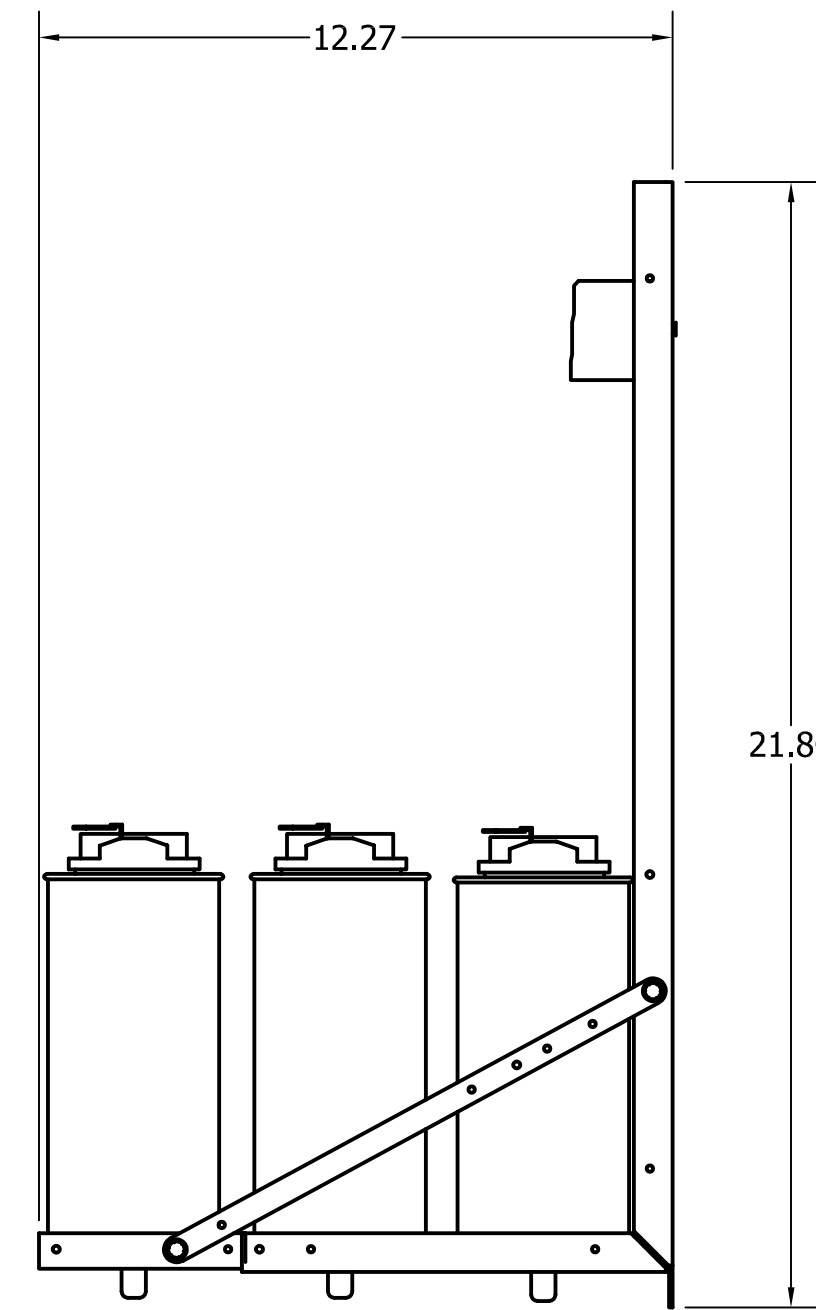
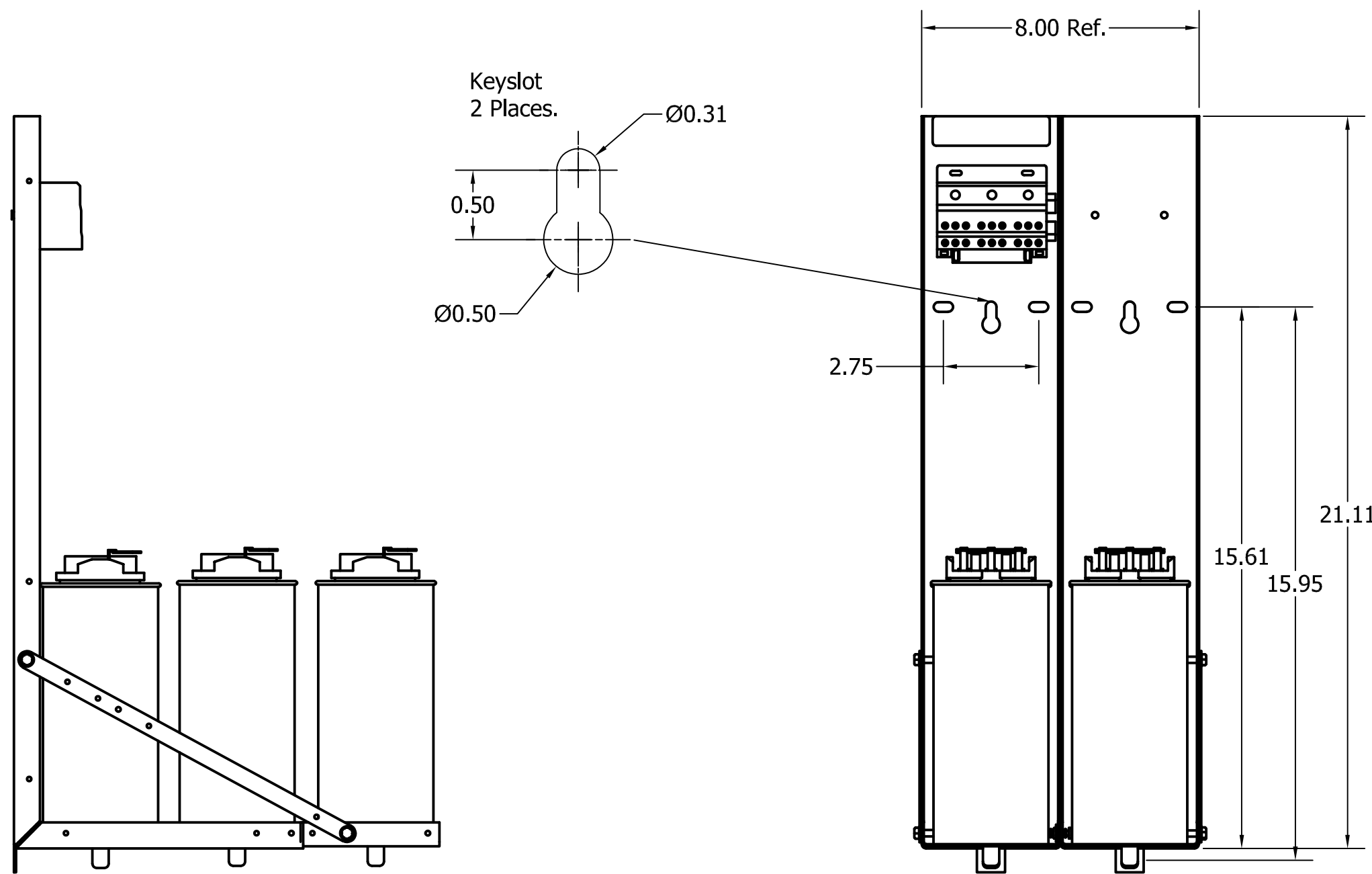
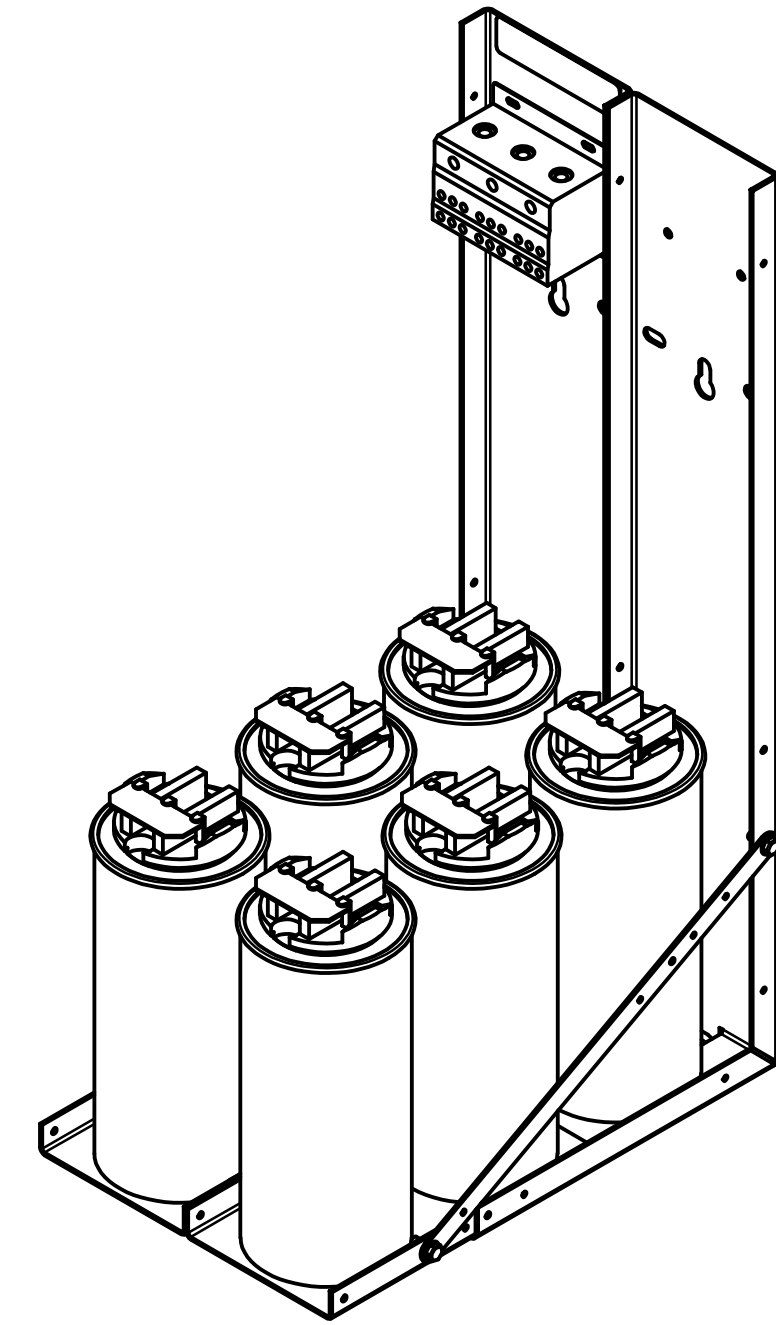


KPCUL055A63, 480V, 55kVar, 350 HP
 Approx. Weight: 28 Lbs

Customer Input	
Wire Range	Tightening Torque
3/0-350mcm.	230 Lb-In



Cap Connection	
Wire Range	Tightening Torque
(2x)14-2 Awg.	31 Lb-In
(5x)14-6 Awg.	17.5 Lb-In
(4x)14-8 Awg.	17.5 Lb-In



DETAIL A

Note: 27908, Manual KPC Installation Guide
 MUST SHIP WITH EACH ASSEMBLY.

TCI, LLC CLAIMS PROPRIETARY RIGHTS IN THE MATERIAL HEREIN DISCLOSED. IT IS SUPPLIED WITHOUT PREJUDICE TO ANY PATENT RIGHTS OF TCI AND MAY NOT BE REPRODUCED OR USED TO MANUFACTURE ANYTHING SHOWN THERE IN WITHOUT WRITTEN PERMISSION FROM TCI.				TOLERANCES (EXCEPT AS NOTED) DECIMAL .XX ± .25 .XXX ± .10 FRACTIONAL ± 1/16 ANGULAR ± 1°		W132 N10611 Grant Drive Germantown, WI 53022 KPCUL055A63, 55 kVar., 350HP Panelized Caps	
NO	REVISION	DATE	BY	DRN BY JRN	DATE 10/04/17	SCALE To Fit	SIZE C
		10/04/2017	JRN				107346DG
							SHT 1 OF 1