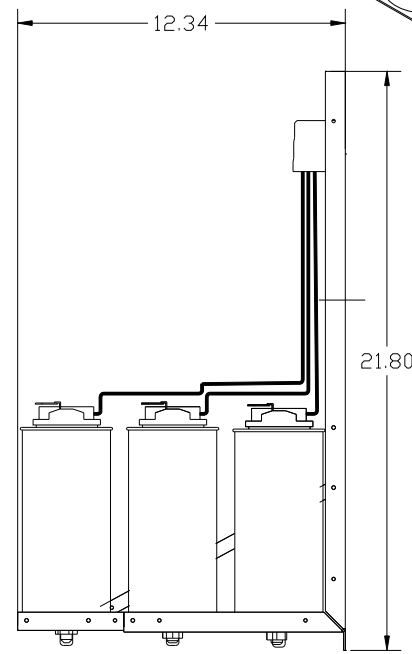
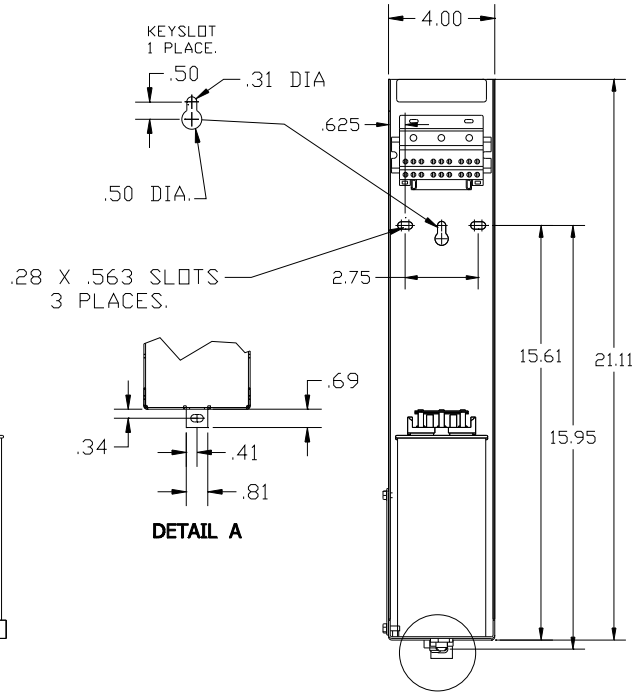
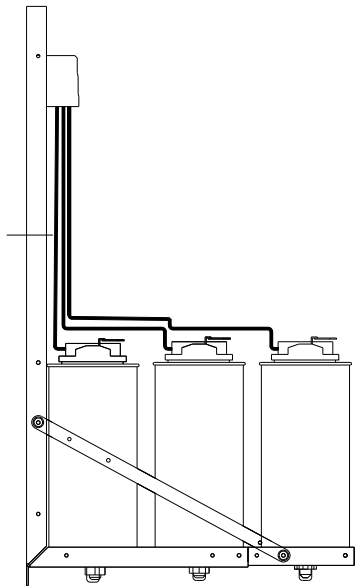
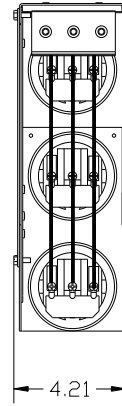
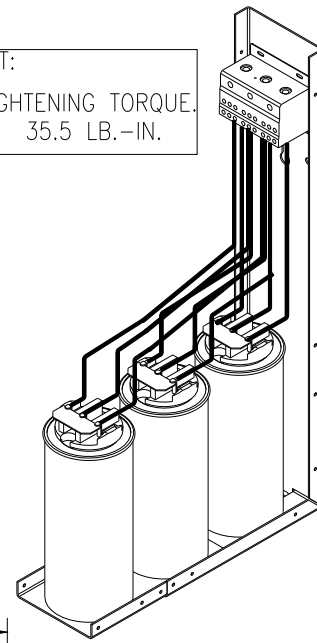


KPCUL045A60, 480V, 45kVar, 150HP.

APPROX. WEIGHT: 10LBS

CUSTOMER INPUT:
 WIRE RANGE TIGHTENING TORQUE.
 8-2/0 AWG. 35.5 LB.-IN.



SEE
 DETAIL A

NOTE: 27908, Manual KPC Installation Guide
 MUST SHIP WITH EACH ASSEMBLY.

TOLERANCES (EXCEPT AS NOTED): DECIMAL .XX ± .02 FRACTIONAL ± 1/32 ANGULAR ± 1/2°				W132 N10611 Grant Drive Germantown, WI 53022
C 3093 CAP CHANGE 5/7/14 DSW .XXX ± .01 B 2805 UPDATE BRACKET 1/9/12 DSW FRACTIONAL ± 1/32 A AS BUILT 10/1/11 DSW ANGULAR ± 1/2°				
NO REVISION DATE BY				DRN BY DSW DATE 8/22/11 DWG. NO. 104794DG SCALE TO FIT SIZE C SHT. 1 OF 1