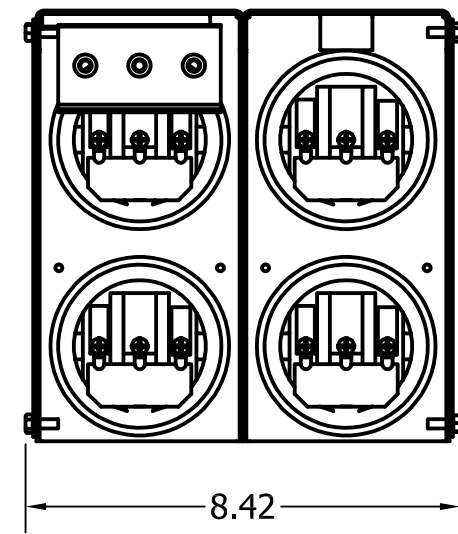
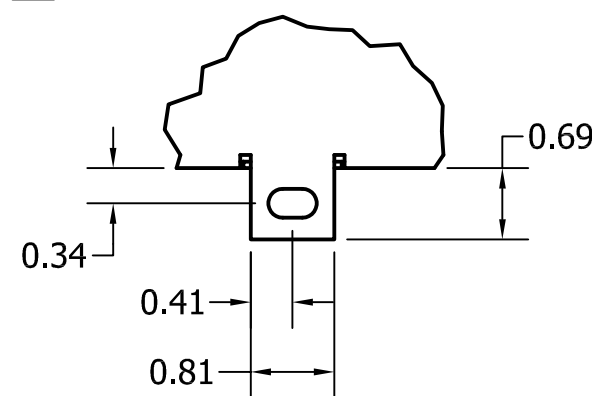
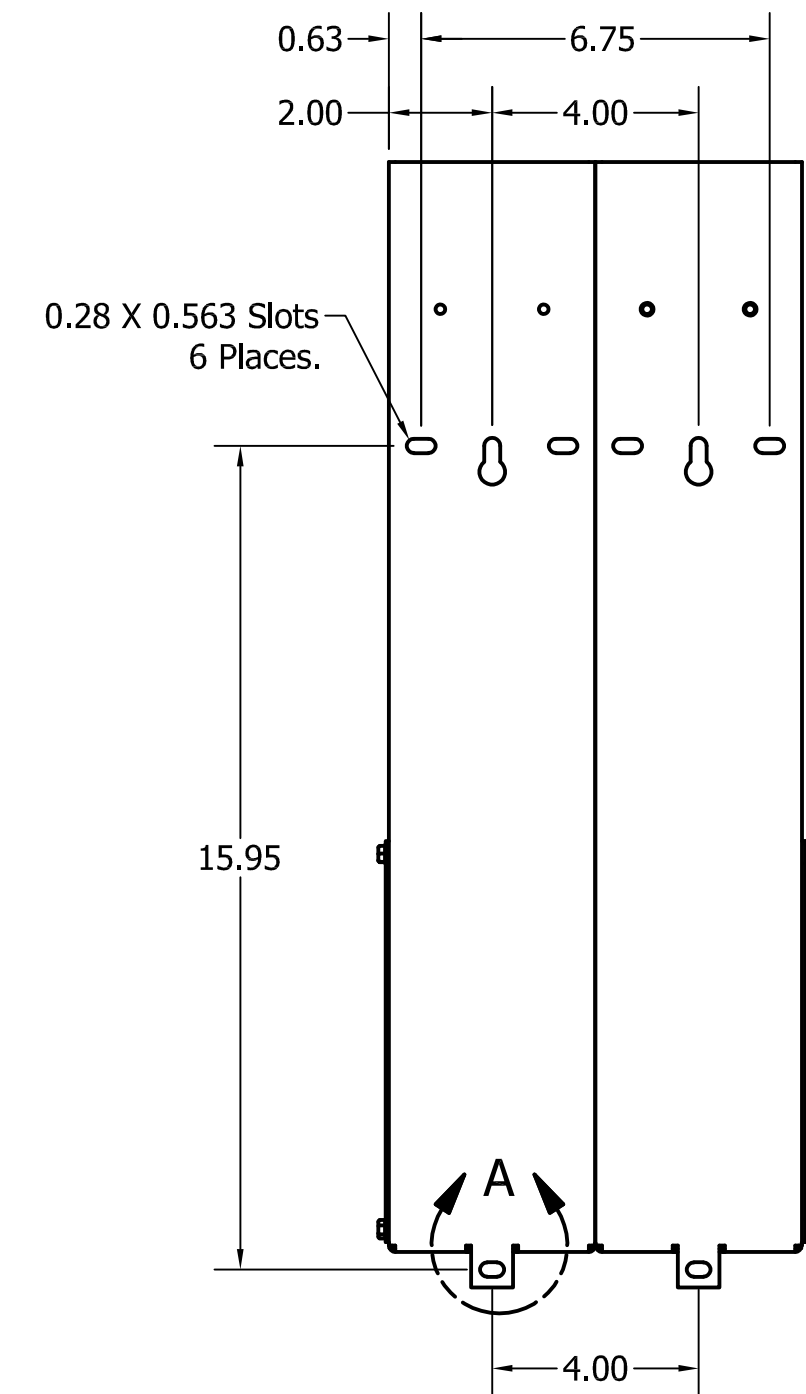
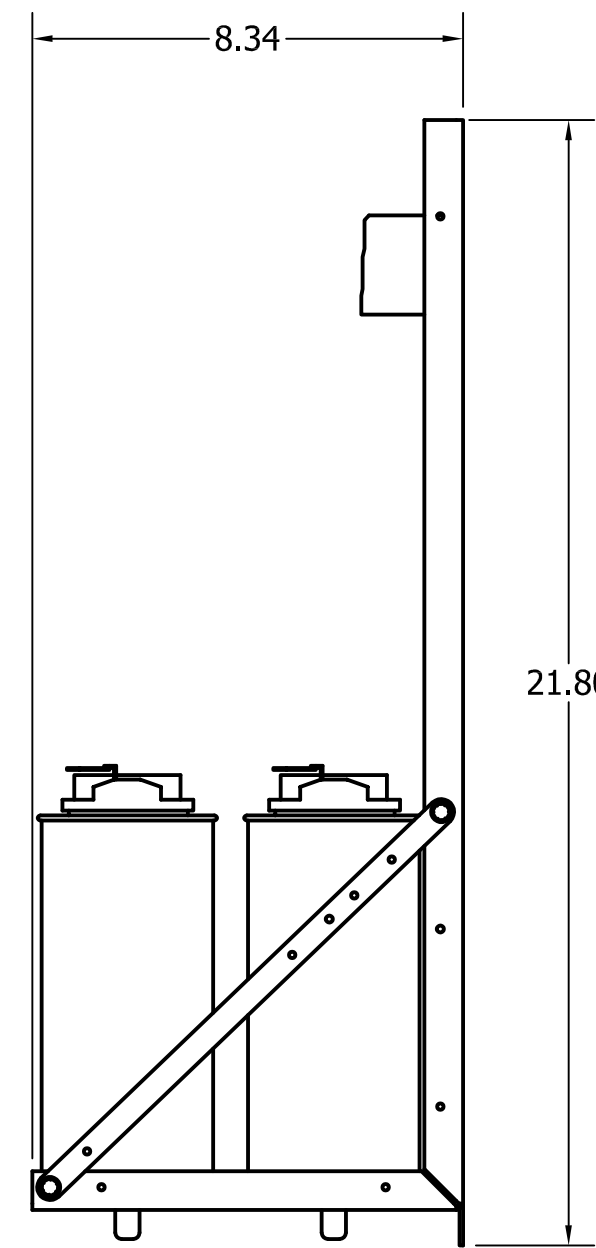
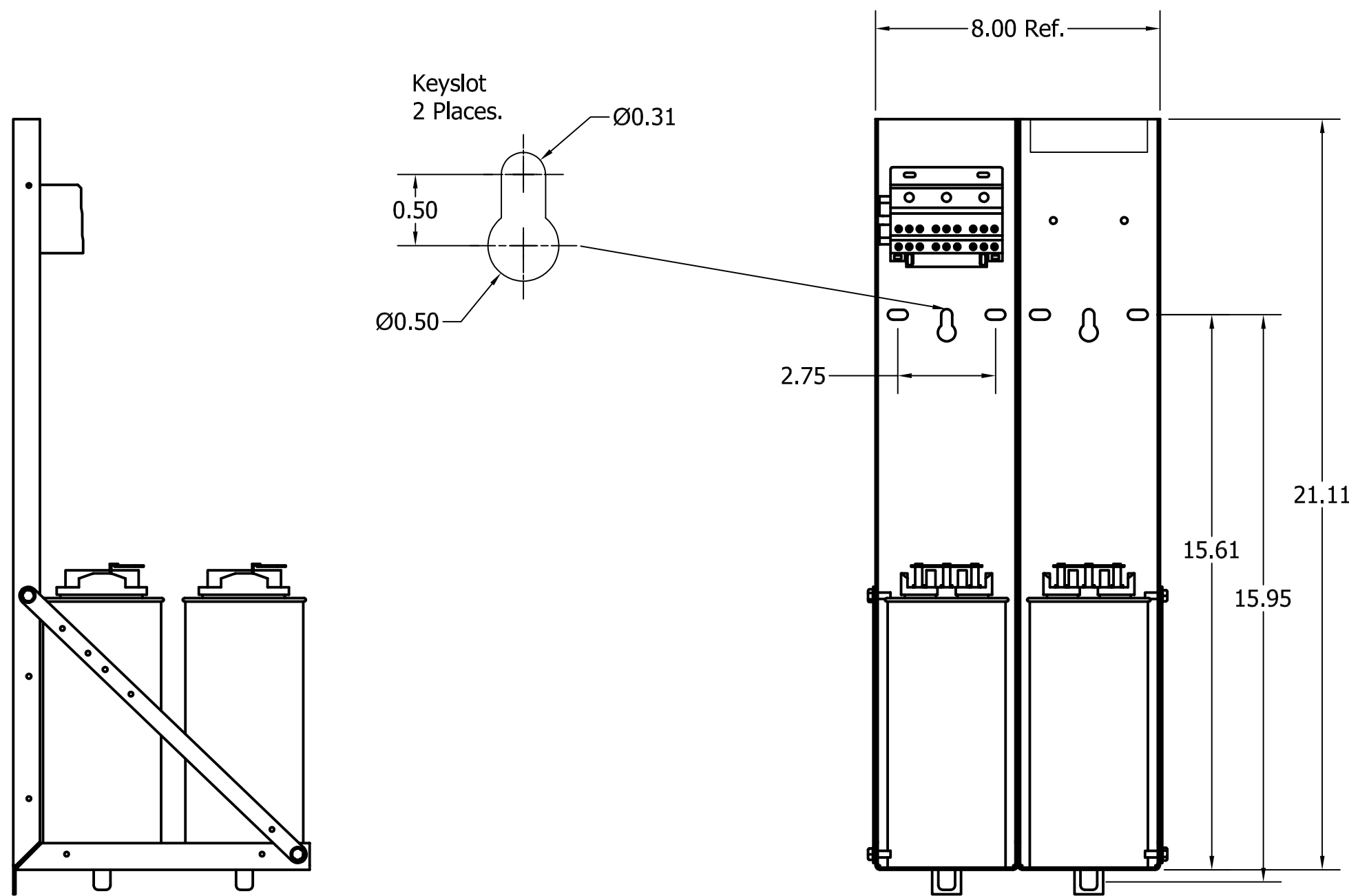
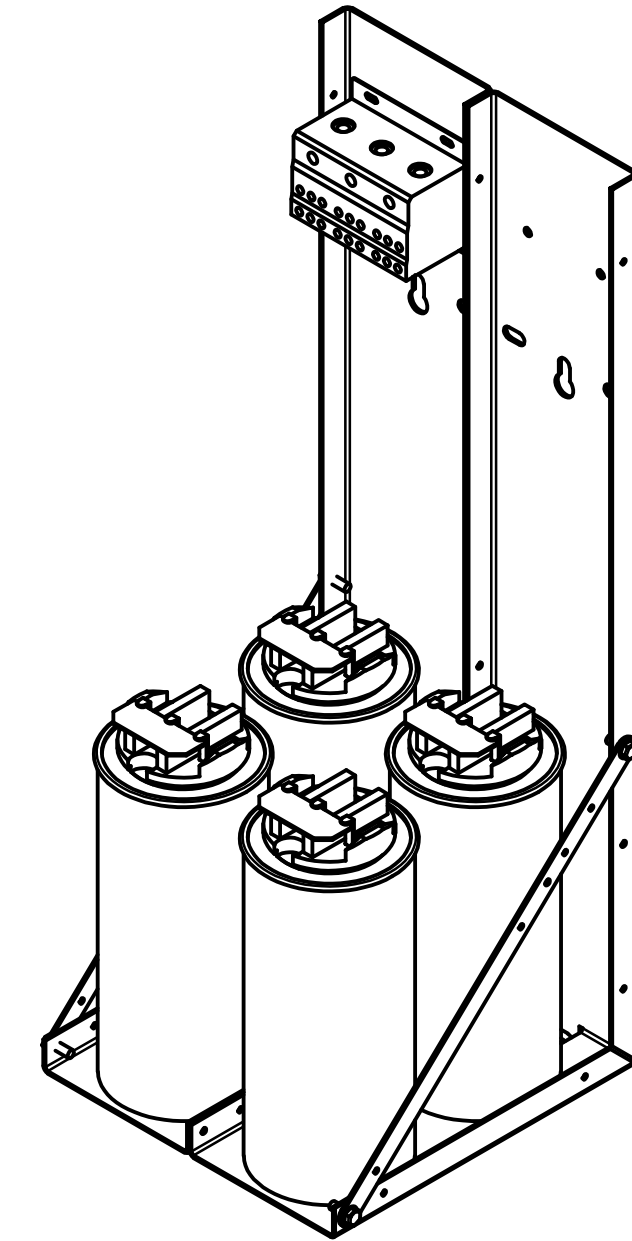


KPCUL040A63, 480V, 40kVar, 250 HP
 Approx. Weight: 20 Lbs

Customer Input	
Wire Range	Tightening Torque
3/0-350mcm.	230 Lb-In



Cap Connection	
Wire Range	Tightening Torque
(2x)14-2 Awg.	31 Lb-In
(5x)14-6 Awg.	17.5 Lb-In
(4x)14-8 Awg.	17.5 Lb-In



DETAIL A

Note: 27908, Manual KPC Installation Guide
 MUST SHIP WITH EACH ASSEMBLY.

HOLE TOLERANCE ± .005

TCI, LLC CLAIMS PROPRIETARY RIGHTS IN THE MATERIAL HEREIN DISCLOSED. IT IS SUPPLIED WITHOUT PREJUDICE TO ANY PATENT RIGHTS OF TCI AND MAY NOT BE REPRODUCED OR USED TO MANUFACTURE ANYTHING SHOWN THERE IN WITHOUT WRITTEN PERMISSION FROM TCI.	NO	REVISION	DATE	BY	TOLERANCES (EXCEPT AS NOTED)	 W132 N10611 Grant Drive Germantown, WI 53022 KPCUL040A63, 40 kVar., 250HP Panelized Caps
	A	As Designed	10/04/2017	JRN	DECIMAL	
					.XX ± .25 .XXX ± .10	
					FRACTIONAL ± 1/16	
				ANGULAR ± 1°	DRN. BY: JRN DATE: 10/04/17 SCALE: To Fit SIZE: C 107344DG	