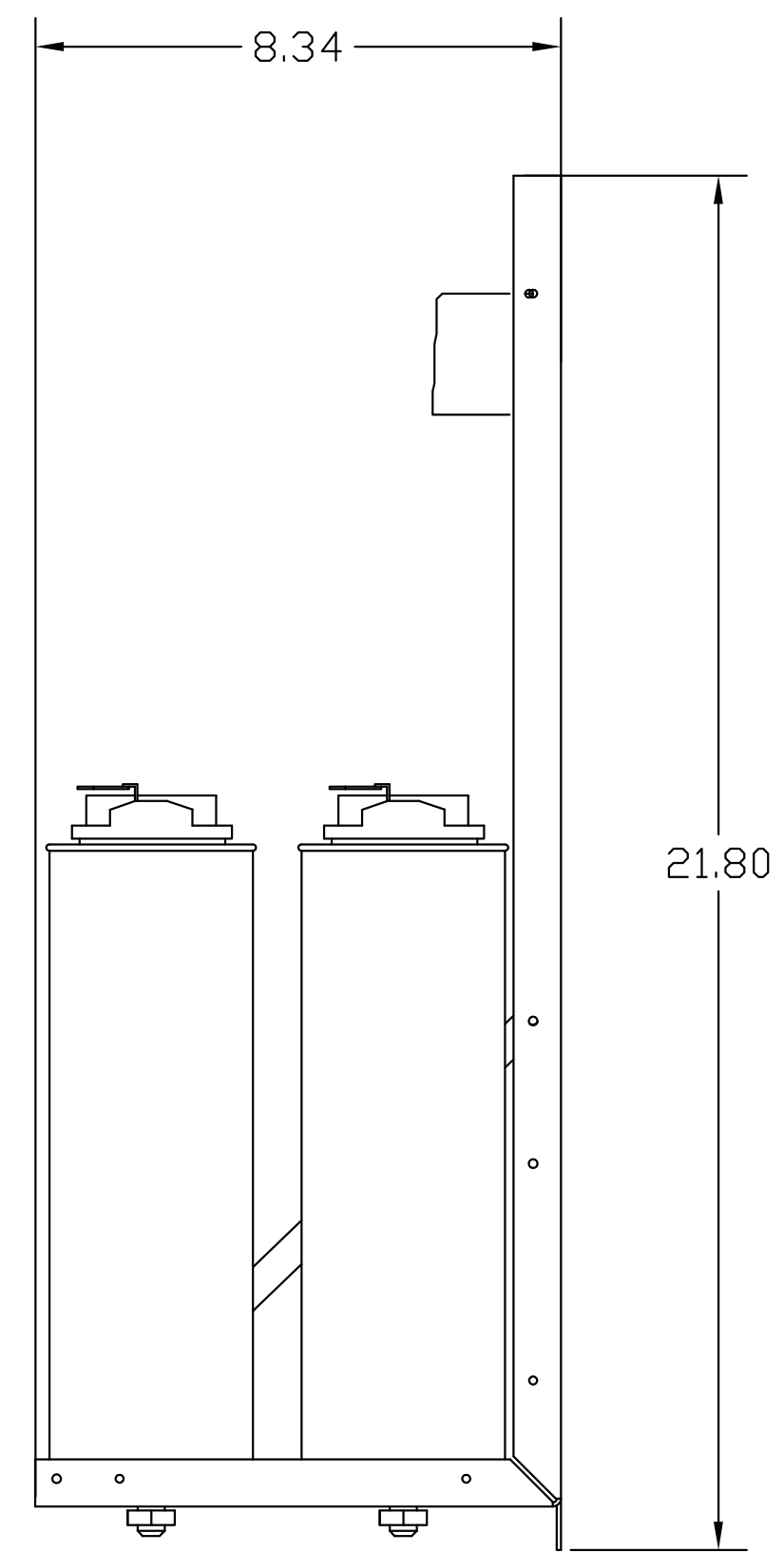
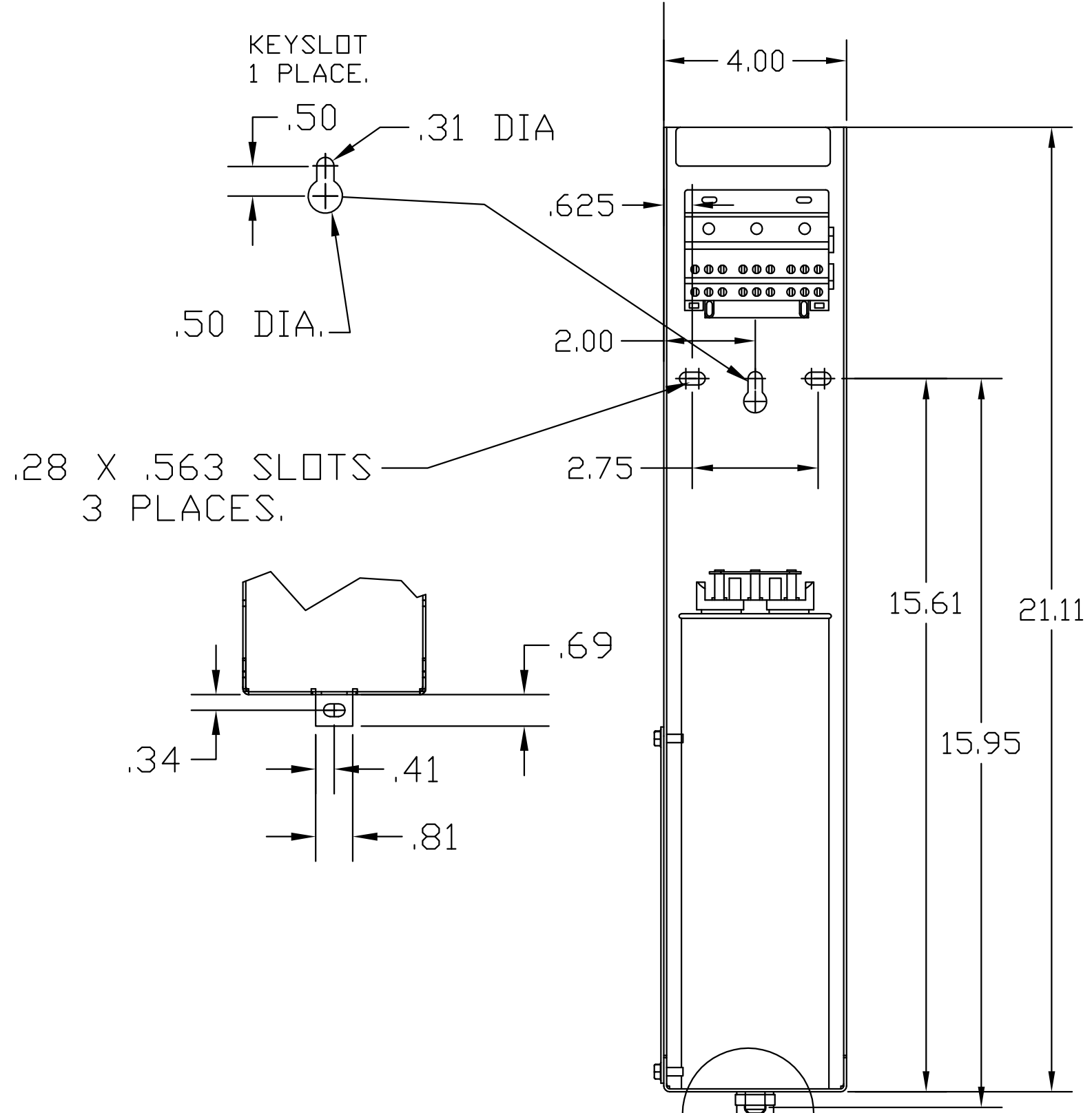
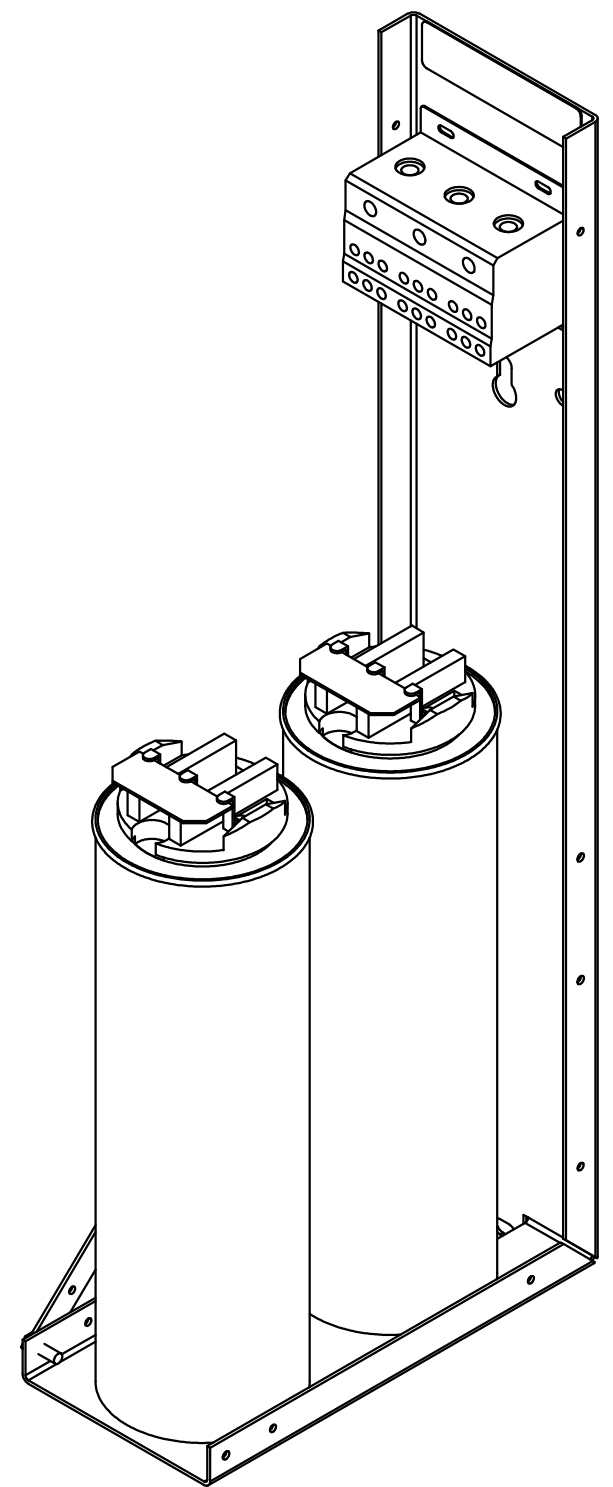
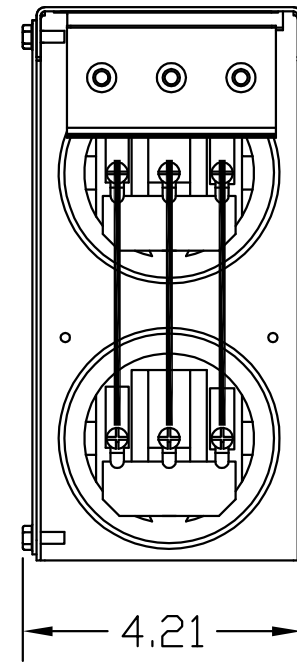


KPCUL040A60, 480V, 40kVar, 125HP.

APPROX. WEIGHT: 12LBS

CUSTOMER INPUT:
WIRE RANGE TIGHTENING TORQUE.
8-2/0 AWG. 35.5 LB.-IN.



NOTE: 27908, Manual KPC Installation Guide
MUST SHIP WITH EACH ASSEMBLY.

SEE
DETAIL A

				TOLERANCES (EXCEPT AS NOTED):	TCL W132 N10611 Grant Drive Germantown, WI 53022
				DECIMAL	
C	2418 CHG TBLK	9/8/15	DSW	.XX ± .25	KPCUL040A60, 125HP, 40kVar PANELIZED CAPS
B	2805 UPDATE BRACKET	1/9/12	DSW	.XXX ± .1	
A	AS BUILT	9/1/11	DSW	FRACTIONAL ± 1/16	DRN BY DSW DATE 8/22/11 DWG. NO. 104793DG
NO	REVISION	DATE	BY	ANGULAR ± 1°	SCALE TO FIT APRVD. SHT.1 OF1