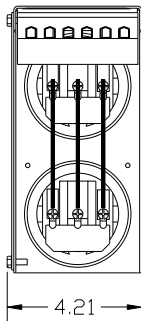


KPCUL025A60, 480V, 25kVar, 75HP.

APPROX. WEIGHT: 9LBS



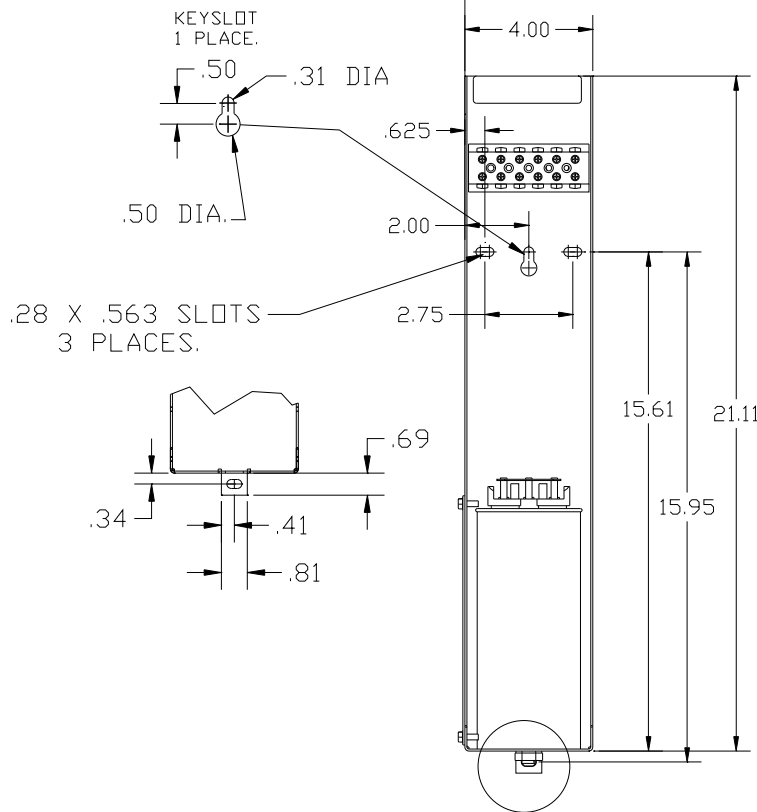
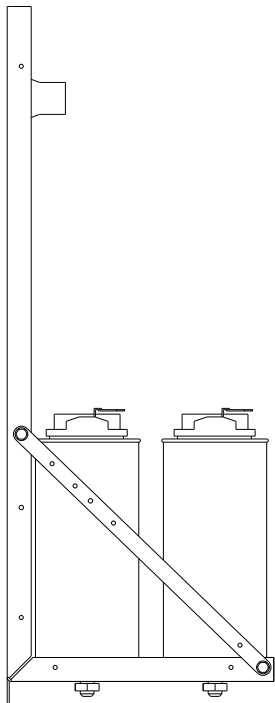
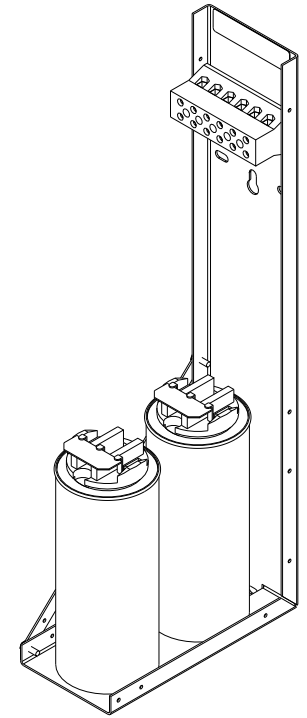
TORQUE(LB-IN)=CUSTOMER WIRE

35=1 AWG THRU 4 AWG

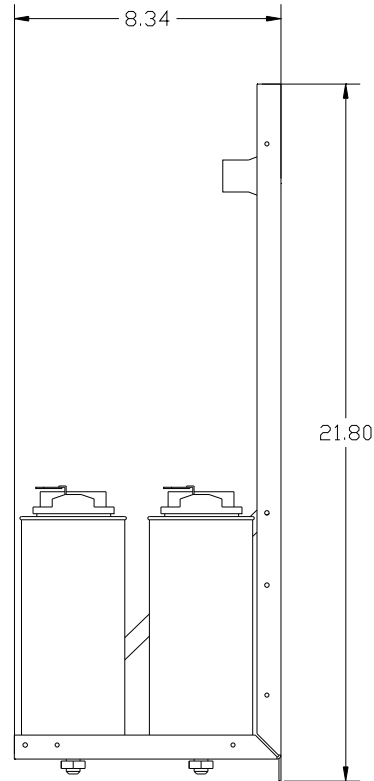
30=6 AWG THRU 14 AWG

25=16 AWG THRU 20 AWG


20=22 AWG



SEE
DETAIL A



NOTE: 27908, Manual KPC Installation Guide
MUST SHIP WITH EACH ASSEMBLY.

<p>TCL, LLC CLAIMS PROPRIETARY RIGHTS IN THE MATERIAL HEREIN DISCLOSED. IT IS SUPPLIED WITHOUT PREJUDICE TO ANY PATENT RIGHTS OF TCL AND MAY NOT BE REPRODUCED OR USED TO MANUFACTURE ANYTHING SHOWN THEREIN WITHOUT WRITTEN PERMISSION FROM TCL.</p>				TOLERANCES (EXCEPT AS NOTED) DECIMAL	 w132 N10611 Grant Drive Germantown, WI 53022	
				.XX ± .03		
	C	3093 CAP CHG	5/8/14	BMZ	.XXX ± .01	KPCUL025A60, 75HP, 25kVar PANELIZED CAPS
	B	2805 UPDATE BRACKET	1/9/12	DSW	FRACTIONAL ± 1/32	
	A	AS BUILT	9/1/11	DSW	ANGULAR ± 1/2°	
NO	REVISION	DATE	BY	± 1/2°	DRN BY DSW DATE 8/22/11 DWG NO 104791DG SCALE TO FIT SIZE C SH1.1 OF1	