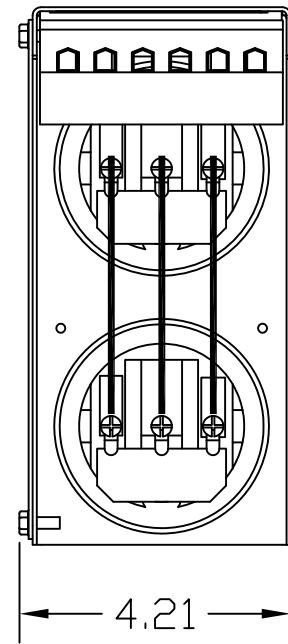
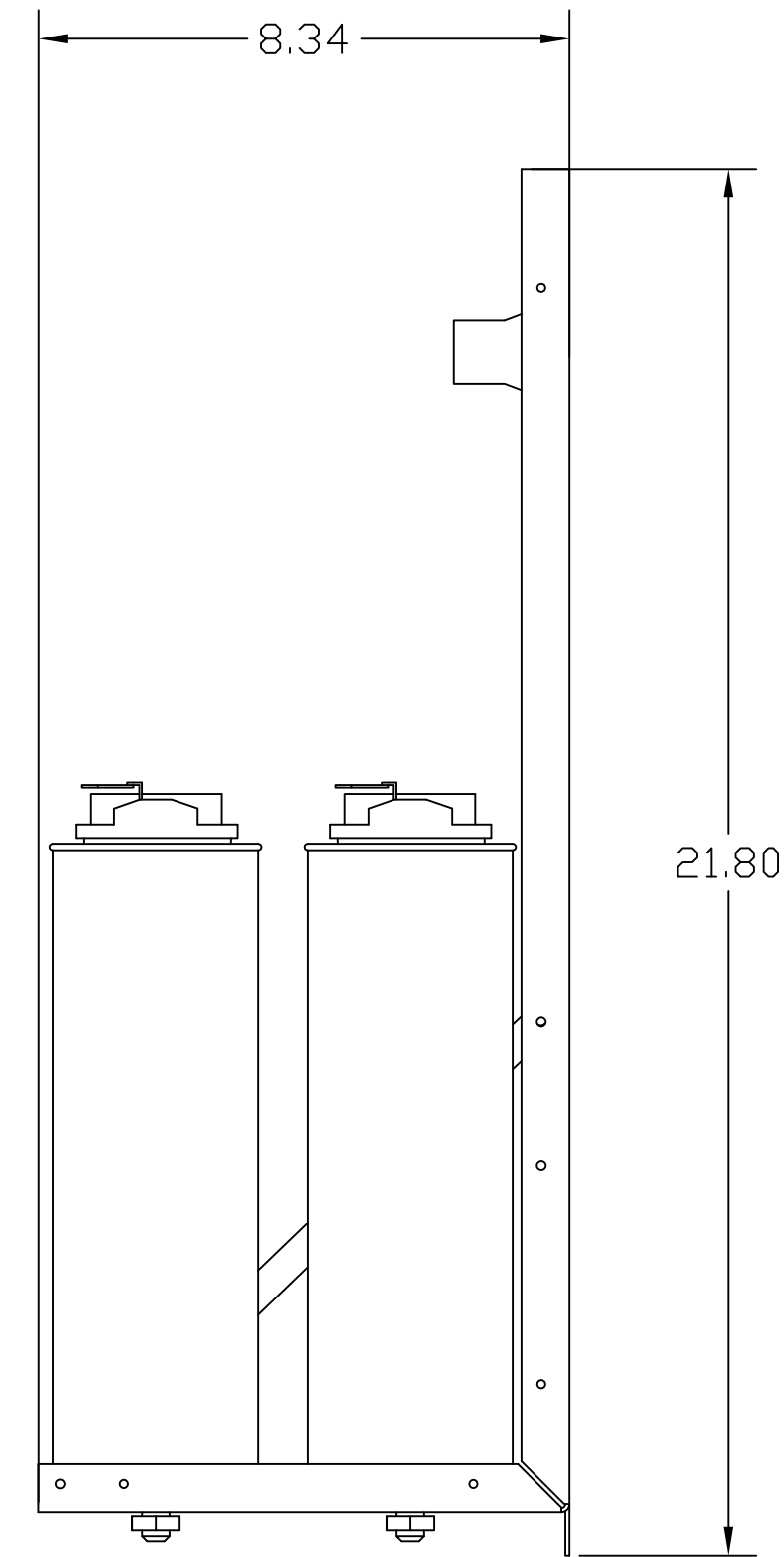
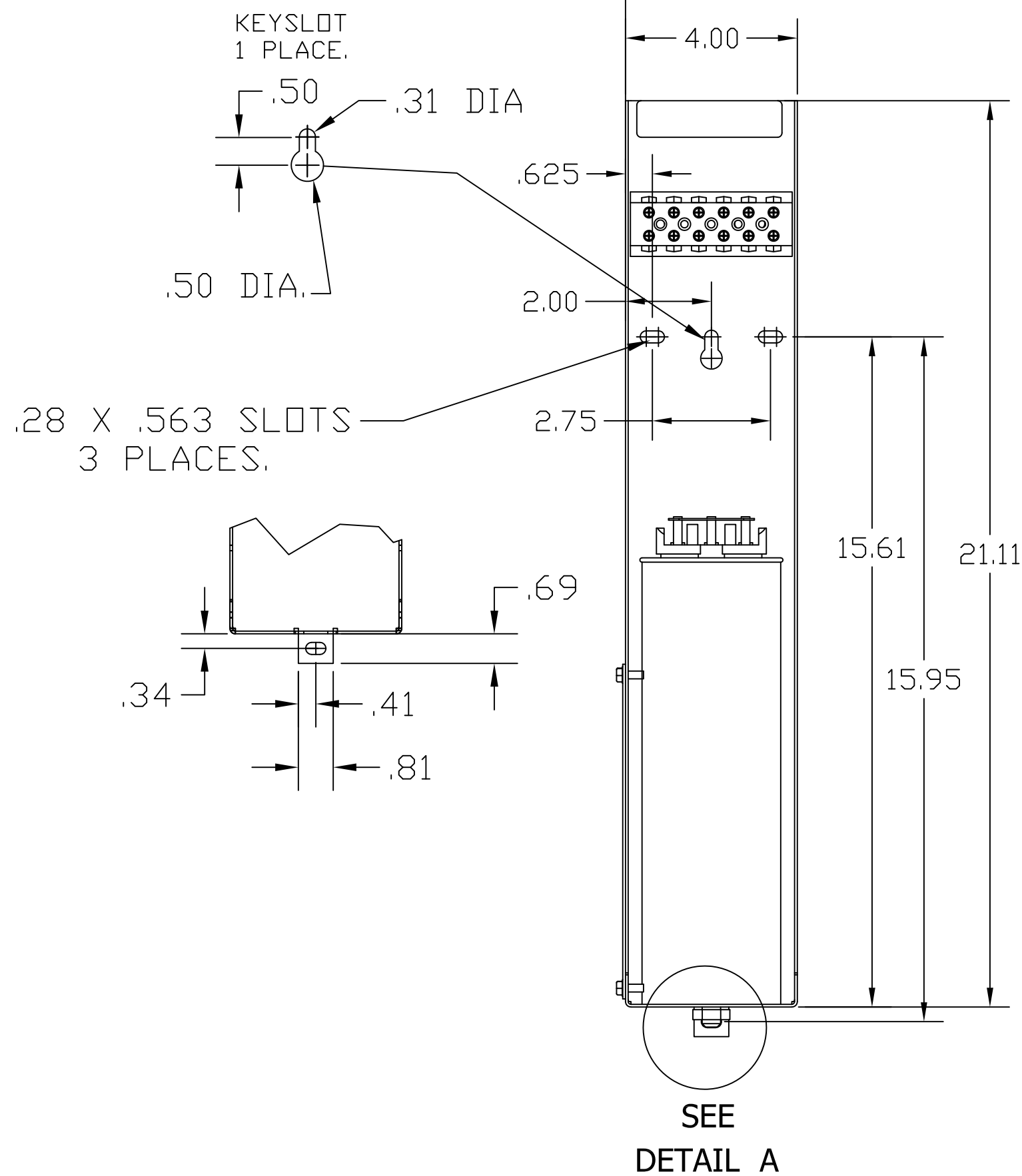
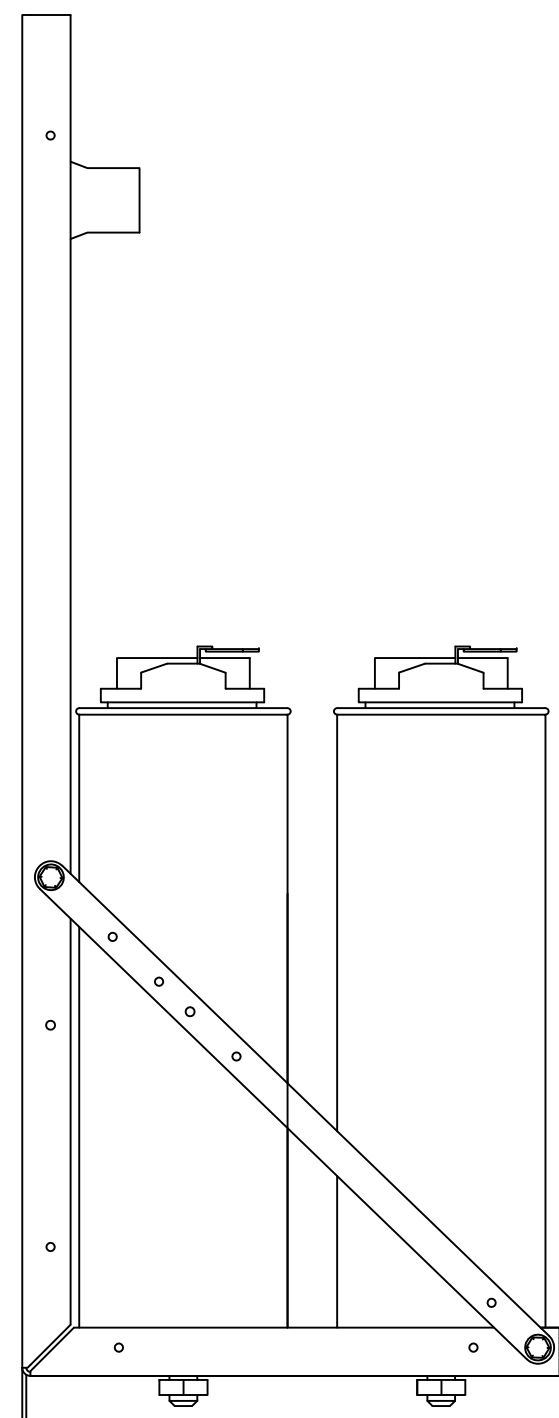
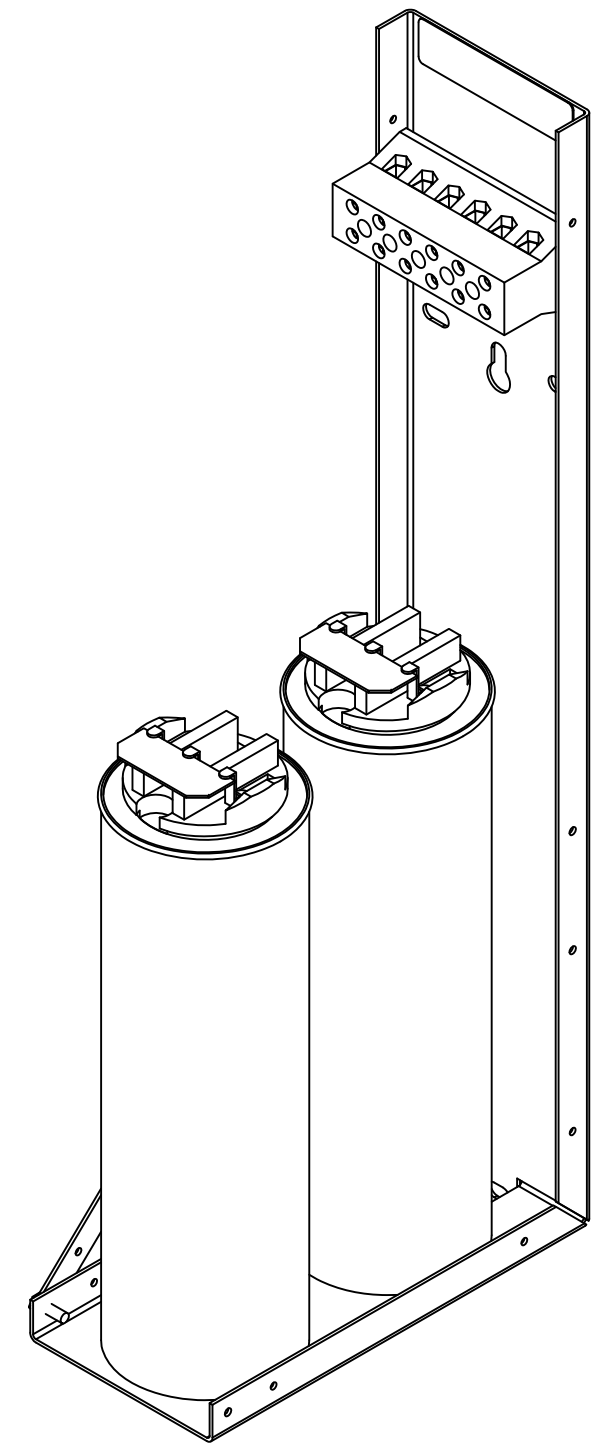


KPCUL022L50, 400V, 55kW, 22.12kVar.
 APPROX. WEIGHT: 12LBS



TORQUE(LB-IN)=CUSTOMER WIRE
 35=1 AWG THRU 4 AWG
 30=6 AWG THRU 14 AWG
 25=16 AWG THRU 20 AWG
 20=22 AWG



NOTE: 27908, Manual KPC Installation Guide
 MUST SHIP WITH EACH ASSEMBLY.

TCI, LLC CLAIMS PROPRIETARY RIGHTS IN THE MATERIAL HEREIN DISCLOSED. IT IS SUPPLIED WITHOUT PREJUDICE TO ANY PATENT RIGHTS OF TCI AND MAY NOT BE REPRODUCED OR USED TO MANUFACTURE ANYTHING SHOWN THEREIN WITHOUT WRITTEN PERMISSION FROM TCI.				TOLERANCES (EXCEPT AS NOTED): DECIMAL	W132 N10611 Grant Drive Germantown, WI 53022	
				.XX ± .02 .XXX ± .01		
	B	2805 UPDATE BRACKET	1/12/12	DSW	FRACTIONAL ± 1/32	KPCUL022L50, 55kW, 22.12kVar PANELIZED CAPS DRN. BY DSW DATE 8/29/11 DWG. NO. 104817 SCALE TO FIT SIZE C SHT.1 OF 1
	A	AS BUILT	9/9/11	DSW	ANGULAR ± 1/2°	
	NO	REVISION	DATE	BY		