

KPCUL015L50, 400V, 37kW, 14.88kVar.

APPROX. WEIGHT: 9LBS

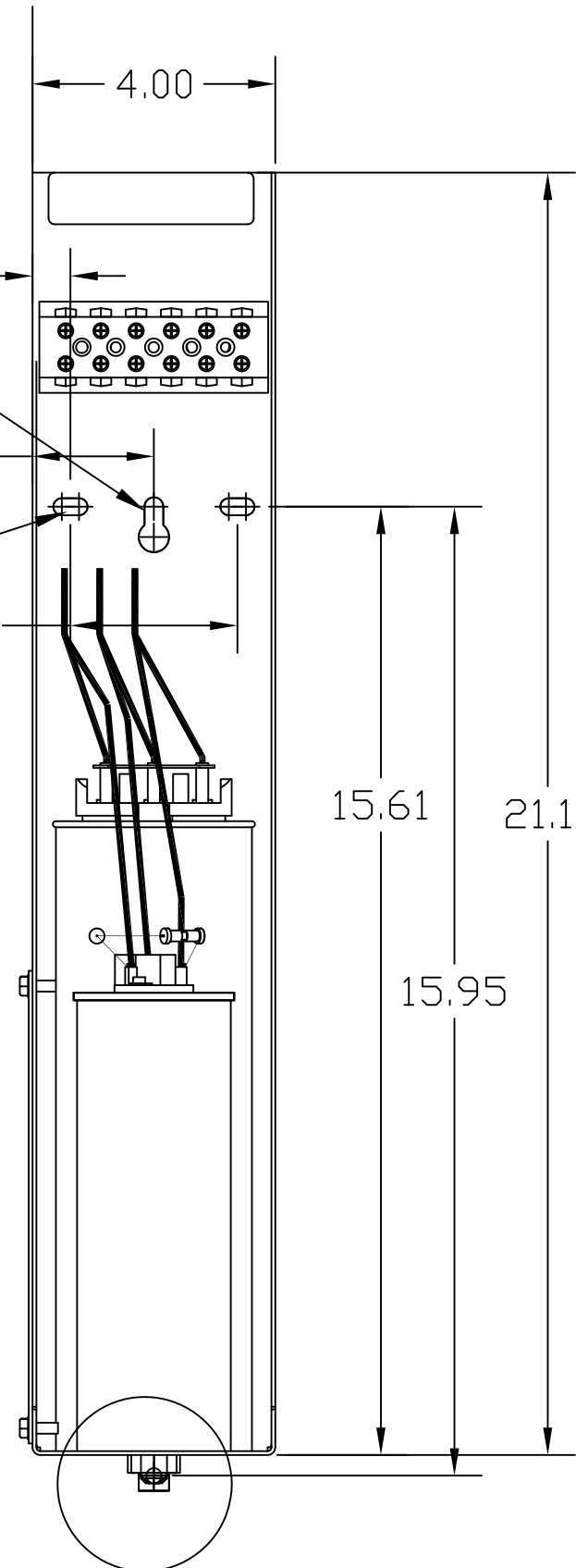
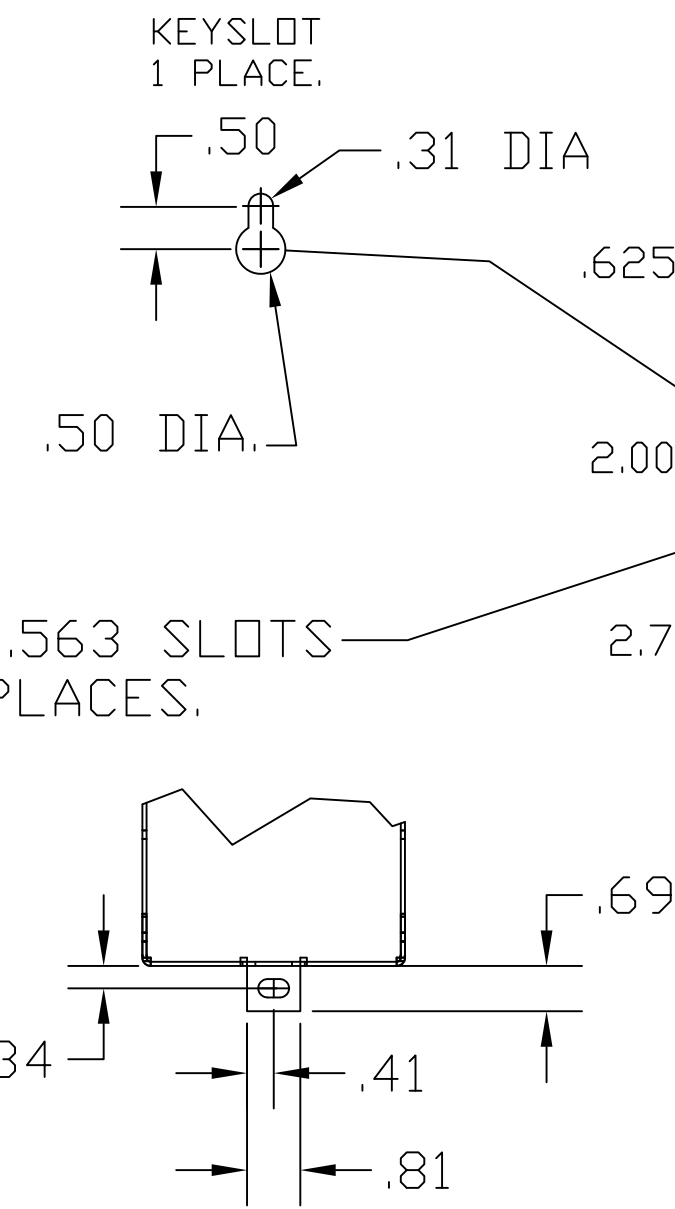
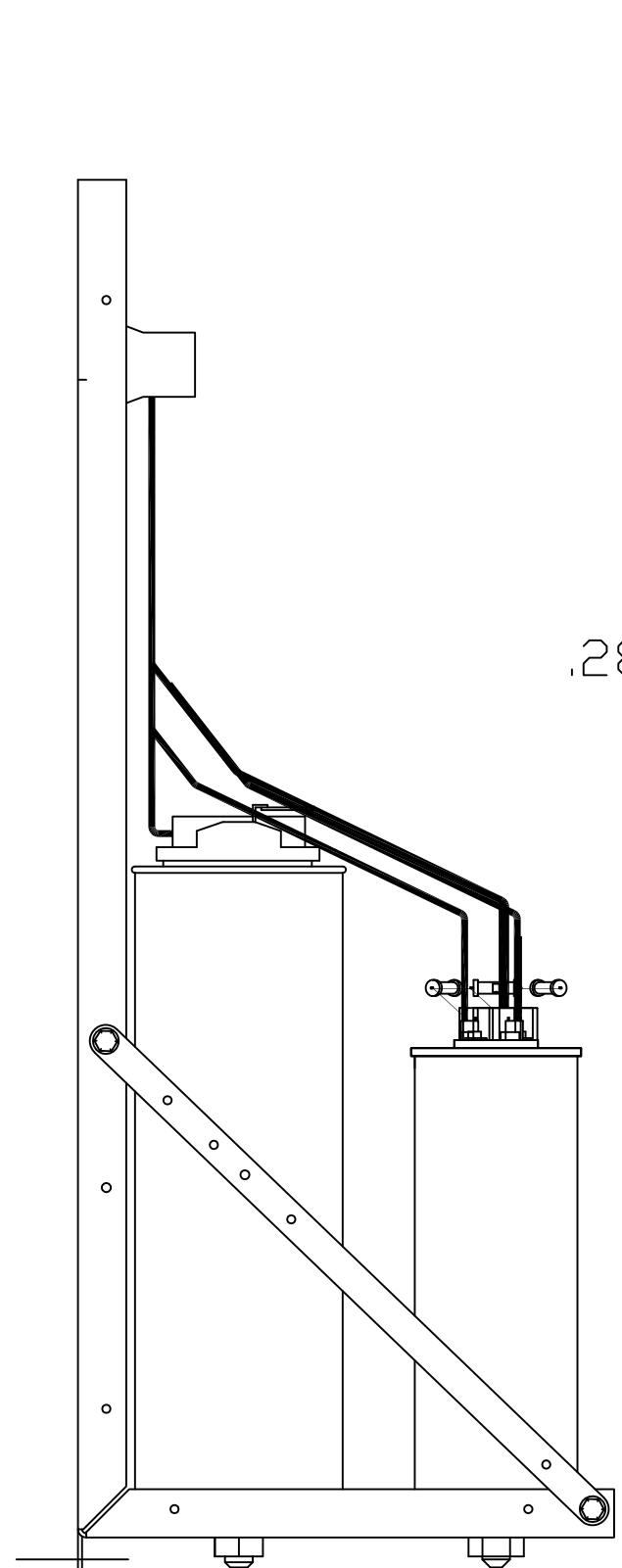
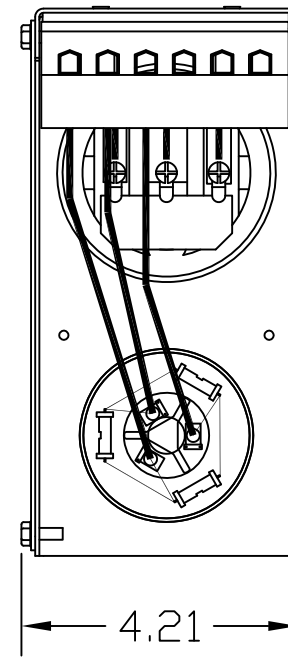
TORQUE(LB-IN)=CUSTOMER WIRE

35=1 AWG THRU 4 AWG

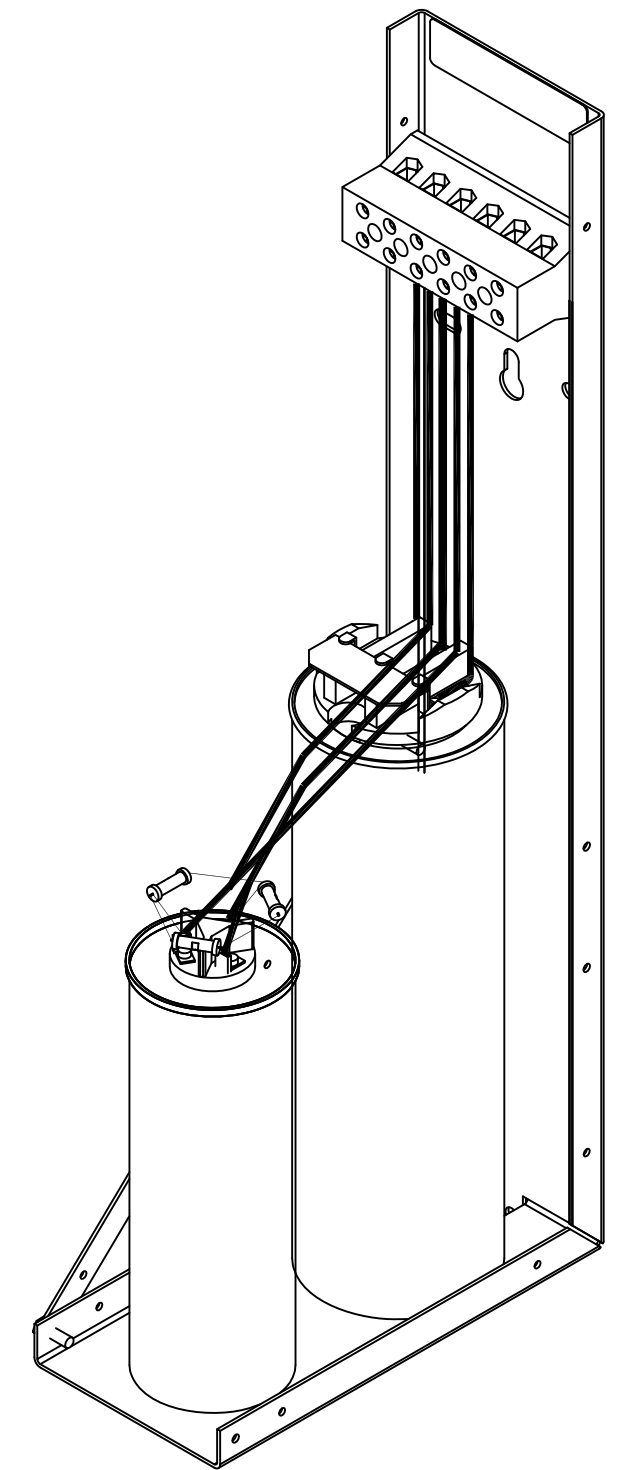
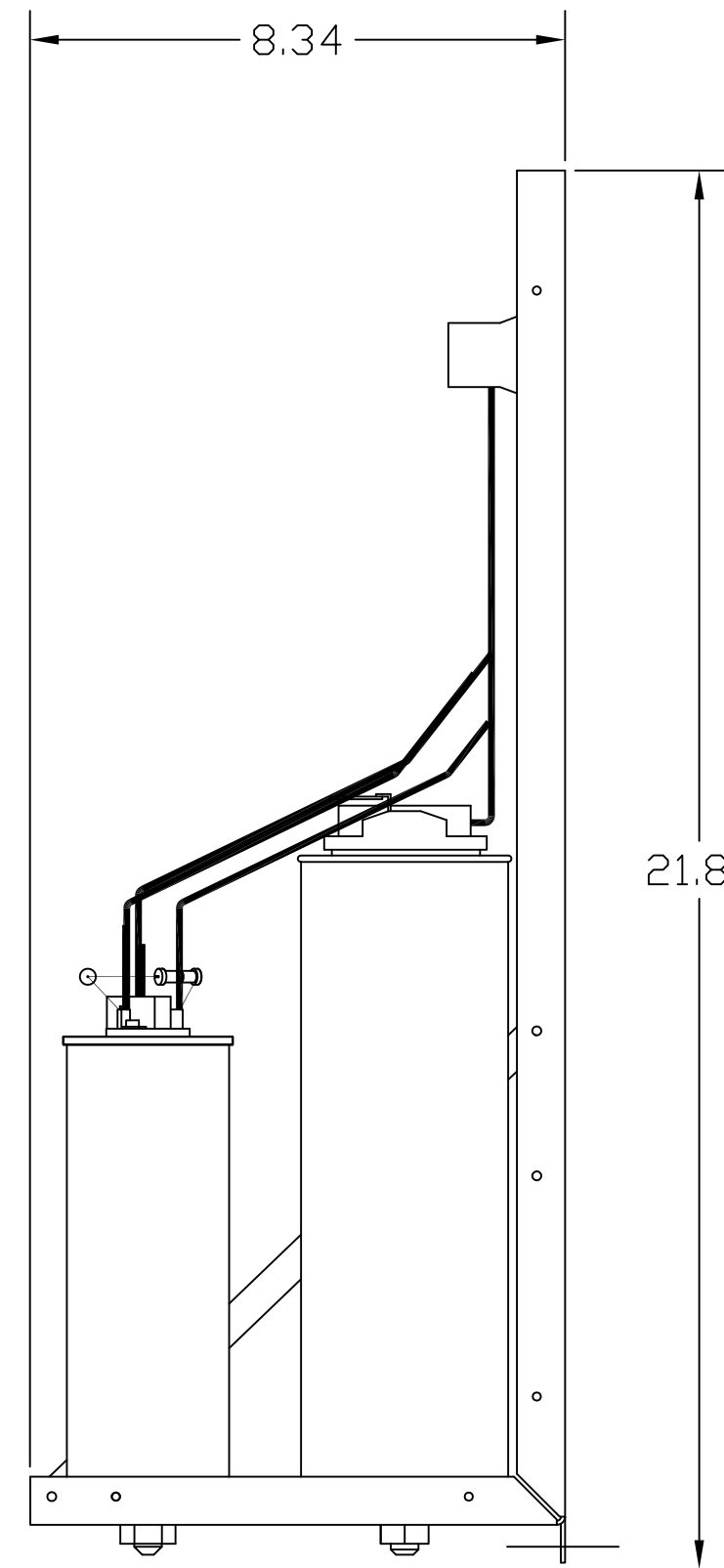
30=6 AWG THRU 14 AWG

25=16 AWG THRU 20 AWG

20=22 AWG



SEE
DETAIL A



NOTE: 27908, Manual KPC Installation Guide
MUST SHIP WITH EACH ASSEMBLY.

TCI, LLC CLAIMS PROPRIETARY RIGHTS IN THE MATERIAL HEREIN DISCLOSED. IT IS SUPPLIED WITHOUT PREJUDICE TO ANY PATENT RIGHTS OF TCI AND MAY NOT BE REPRODUCED OR USED TO MANUFACTURE ANYTHING SHOWN THEREIN WITHOUT WRITTEN PERMISSION FROM TCI.				TOLERANCES (EXCEPT AS NOTED):	TCI ® W132 N10611 Grant Drive Germantown, WI 53022 KPCUL015L50, 37kW, 14.88 kVar PANELIZED CAPS
				DECIMAL	
				.XX ±.02	
				.XXX±.01	
	B	2805 UPDATE BRACKET	1/12/12	DSW	FRACTIONAL ± 1/32
	A	AS BUILT	9/9/11	DSW	ANGULAR ± 1/2°
	NO	REVISION	DATE	BY	
					SCALE TO FIT
					SIZE C
					DWG. NO. 104815DG
					SHT.1 OF 1