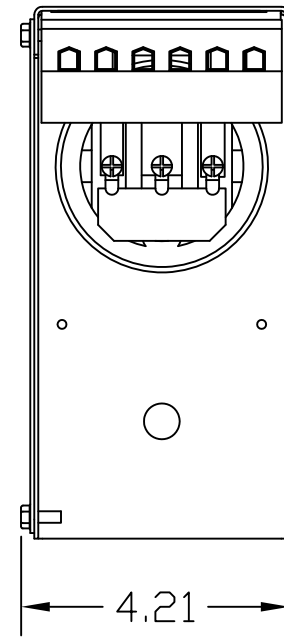
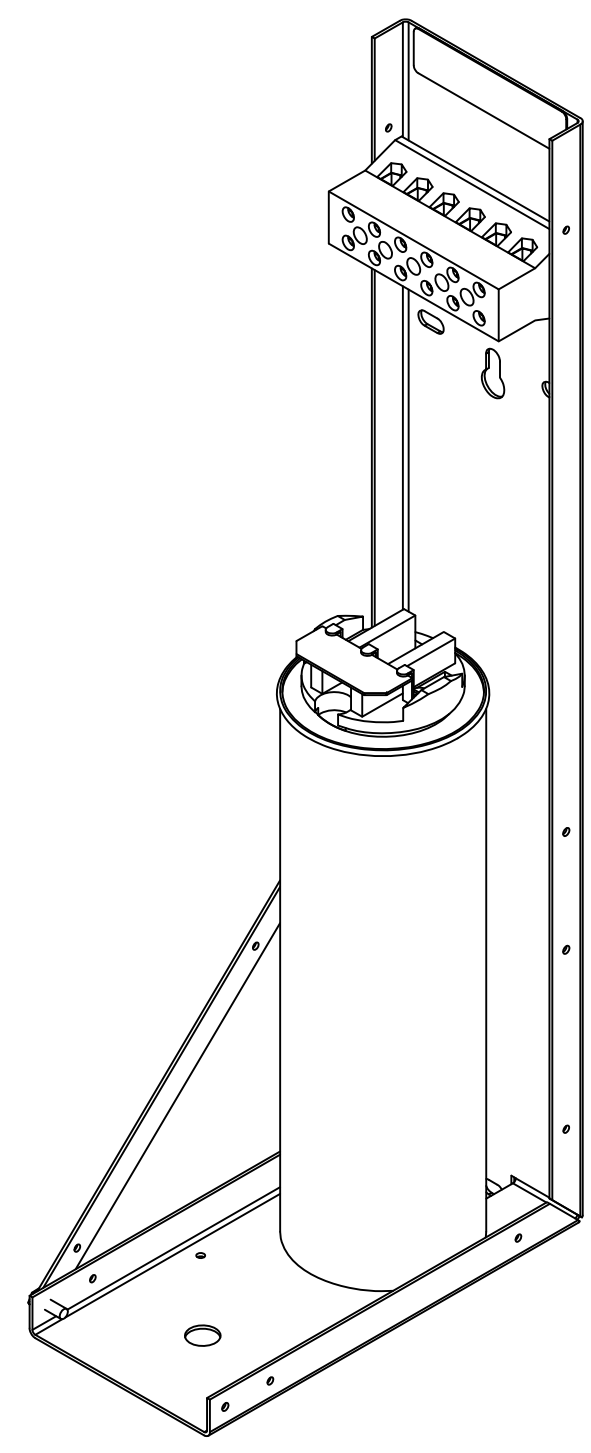
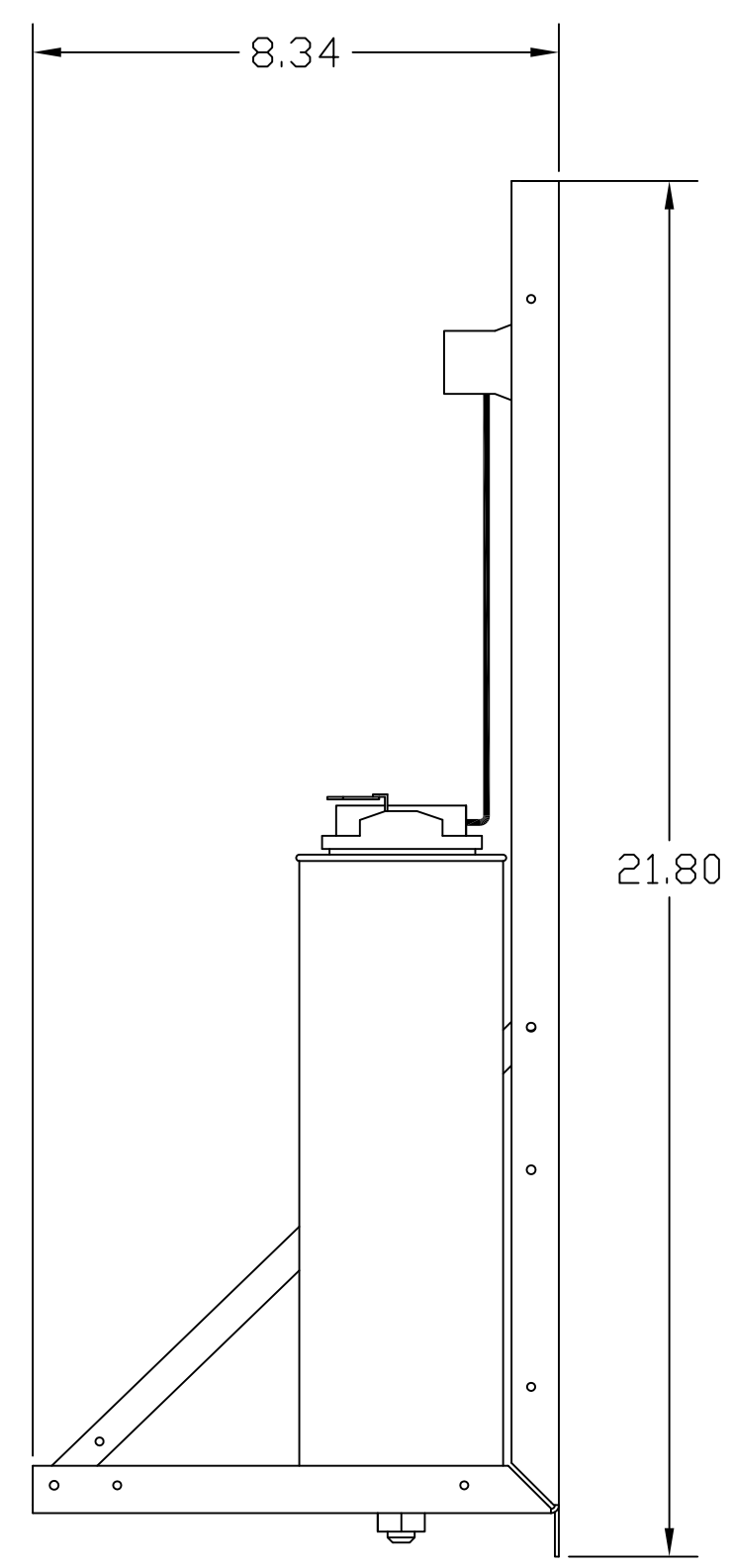
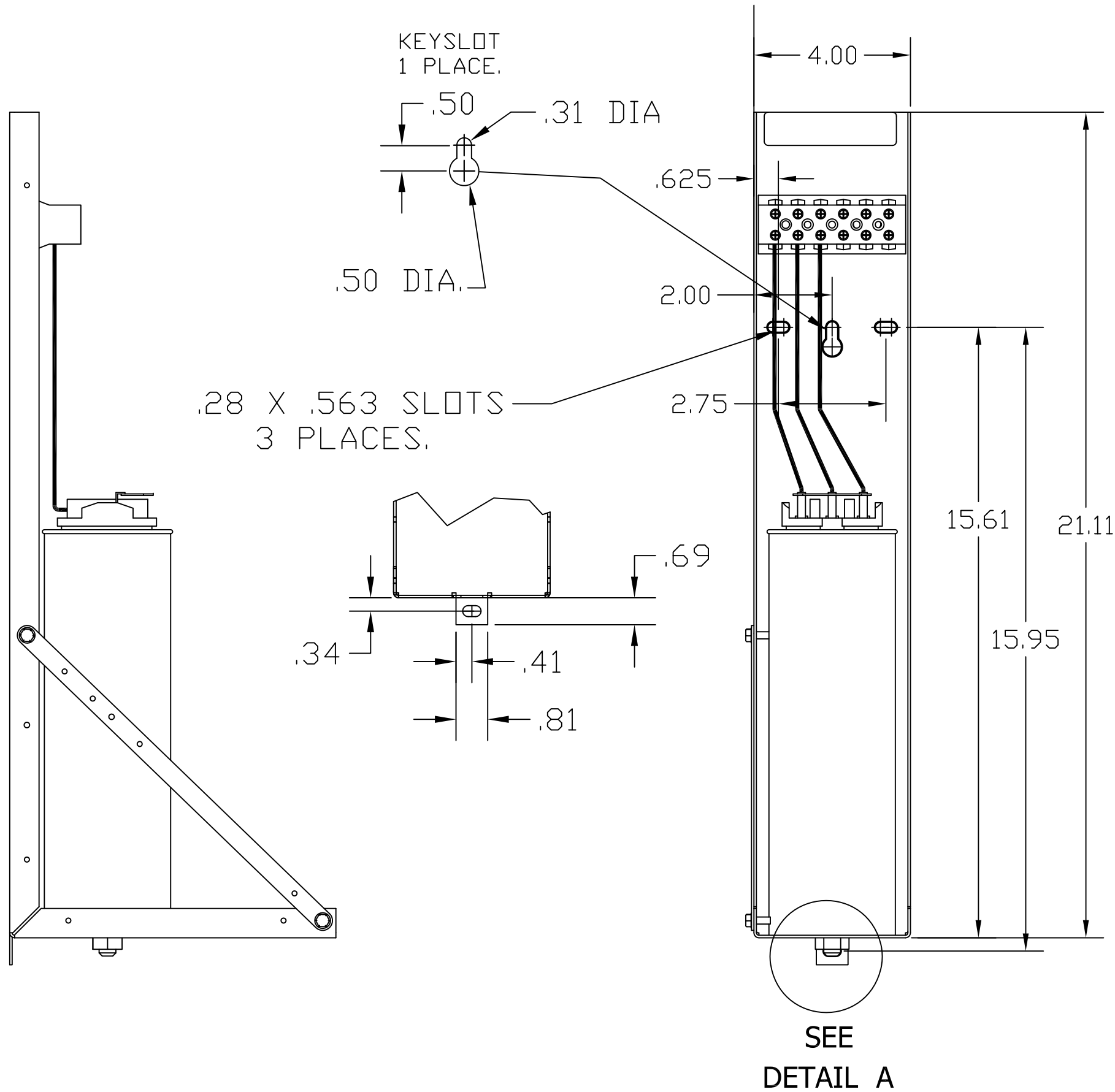


KPCUL012L50, 400V, 30kW, 12.06kVar.  
 APPROX. WEIGHT: 7LBS



TORQUE(LB-IN)=CUSTOMER WIRE  
 35=1 AWG THRU 4 AWG  
 30=6 AWG THRU 14 AWG  
 25=16 AWG THRU 20 AWG  
 20=22 AWG



NOTE: 27908, Manual KPC Installation Guide  
 MUST SHIP WITH EACH ASSEMBLY.

TCI, LLC CLAIMS PROPRIETARY RIGHTS IN THE MATERIAL HEREIN DISCLOSED. IT IS SUPPLIED WITHOUT PREJUDICE TO ANY PATENT RIGHTS OF TCI AND MAY NOT BE REPRODUCED OR USED TO MANUFACTURE ANYTHING SHOWN THEREIN WITHOUT WRITTEN PERMISSION FROM TCI.				TOLERANCES (EXCEPT AS NOTED):	W132 N10611 Grant Drive Germantown, WI 53022
				DECIMAL	
					.XX ± .02
					.XXX ± .01
	B	2805 UPDATE BRACKET	1/12/12	DSW	FRACTIONAL ± 1/32
	A	AS BUILT	9/9/11	DSW	ANGULAR ± 1/2°
	NO	REVISION	DATE	BY	SCALE TO FIT
					SIZE C
					DRN. BY DSW DATE 8/29/11 DWG. NO. 104814DG
					SHT. 1 OF 1