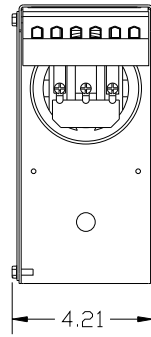


KPCUL010C60, 600V, 10kVar, 30HP.

APPROX. WEIGHT: 5.4LBS



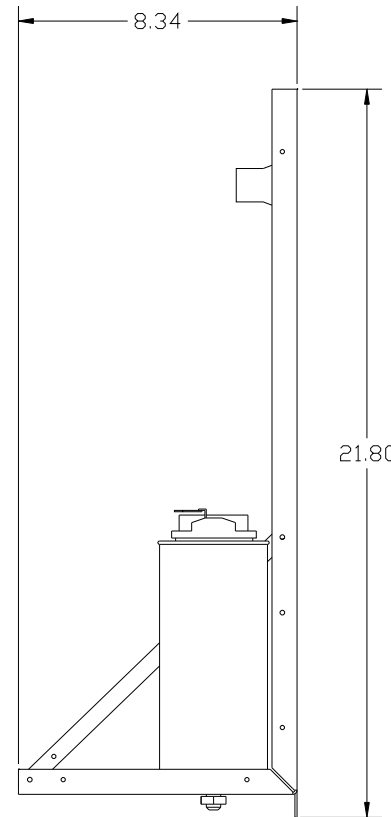
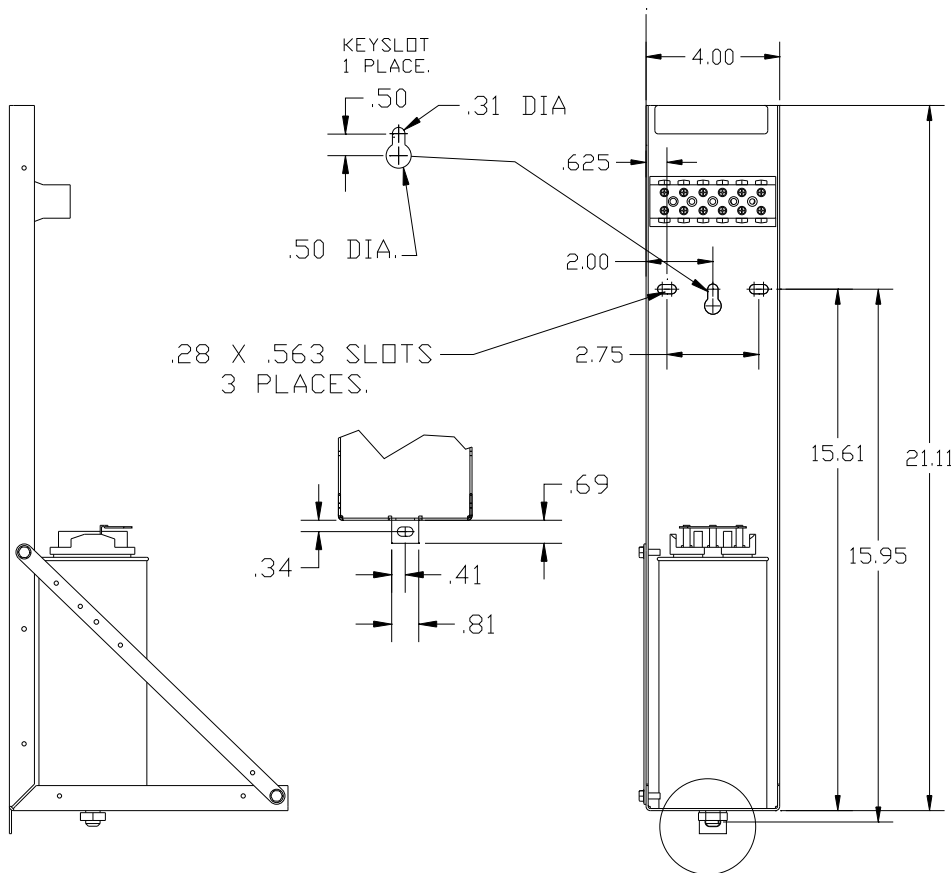
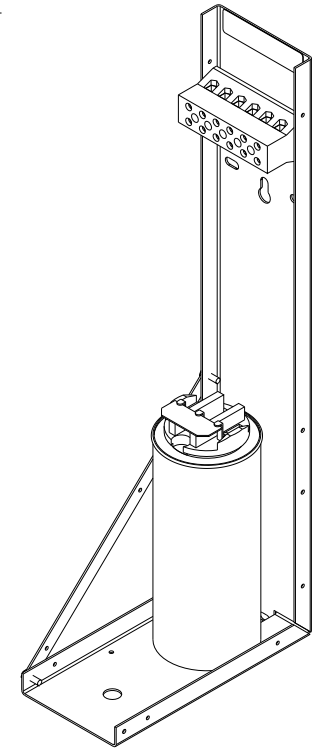
TORQUE(LB-IN)=CUSTOMER WIRE

35=1 AWG THRU 4 AWG

30=6 AWG THRU 14 AWG

25=16 AWG THRU 20 AWG

20=22 AWG



SEE
DETAIL A

NOTE: 27908, Manual KPC Installation Guide
MUST SHIP WITH EACH ASSEMBLY.

<p>TCL, LLC CLAIMS PROPRIETARY RIGHTS IN THE MATERIAL HEREIN DISCLOSED. IT IS SUPPLIED WITHOUT PREJUDICE TO ANY PATENT RIGHTS OF TCL AND MAY NOT BE REPRODUCED OR USED TO MANUFACTURE ANYTHING SHOWN THEREIN WITHOUT WRITTEN PERMISSION FROM TCL.</p>				<p>TOLERANCES (EXCEPT AS NOTED)</p>		<p>TCL® W132 N10611 Grant Drive Germanstown, WI 53022</p>					
				DECIMAL		<p>.XX ± .03</p> <p>.XXX ± .01</p>		<p>KPCUL010C60, 30HP, 10kVar PANELIZED CAPS</p>			
B	2805 UPDATE BRACKET	1/12/12	DSW	FRACTIONAL	± 1/32	DRN BY	DSW	DATE	8/29/11	DWG NO	104833DG
A	AS BUILT	9/8/11	DSW	ANGULAR	± 1/2°	SCALE	TO FIT	SIZE			
NO	REVISION	DATE	BY							<p>SHT. 1 of 1</p>	