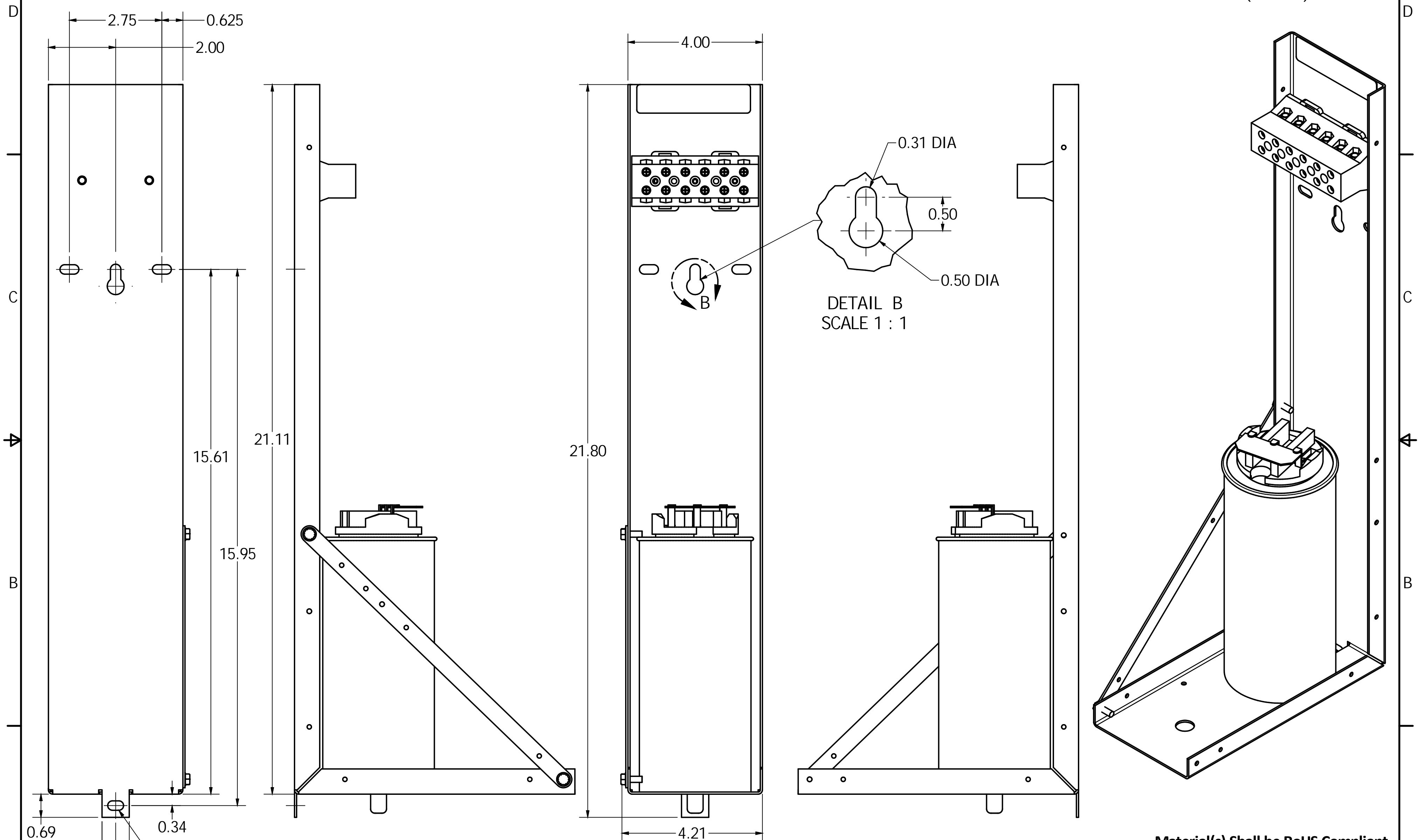


KPCUL10A60, 480V, 10kVar, 30HP  
 Approx Weight: 6LBS  
 See 27908 (KPC Capacitor Bank Manual) For Installation Information.

Terminal Block Torque ( LB-IN)  
 Wire Range #1 AWG. TO #4 AWG. = (35LB-IN)  
 #6 AWG. TO #14 AWG. = (30LB-IN)  
 #16 AWG. TO #22 AWG. = (25LB-IN)  
 #22 AWG = (20LB-IN)



TCI, LLC CLAIMS PROPRIETARY RIGHTS IN THE MATERIAL HEREIN DISCLOSED. IT IS SUPPLIED WITHOUT PREJUDICE TO ANY PATENT RIGHTS OF TCI AND MAY NOT BE REPRODUCED OR USED TO MANUFACTURE ANYTHING SHOWN THEREIN WITHOUT WRITTEN PERMISSION FROM TCI.

NO	REVISION	DATE	BY
C	3728 UPDATE CAP	9/1/16	DSW

DRN. BY DSW		DATE 8/22/11	DWG. No. 104788DG
SCALE 1/2		APPRVD.	SHEET 1 OF 1