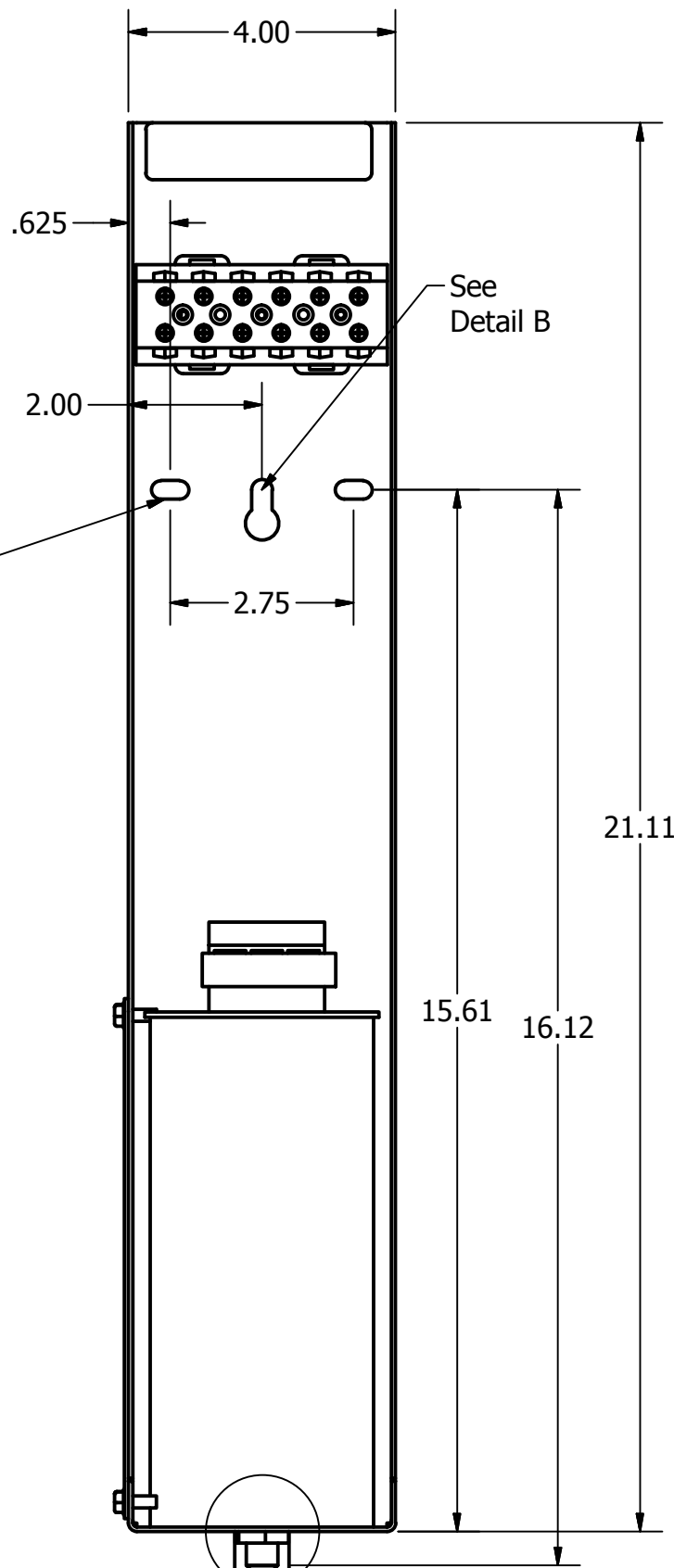
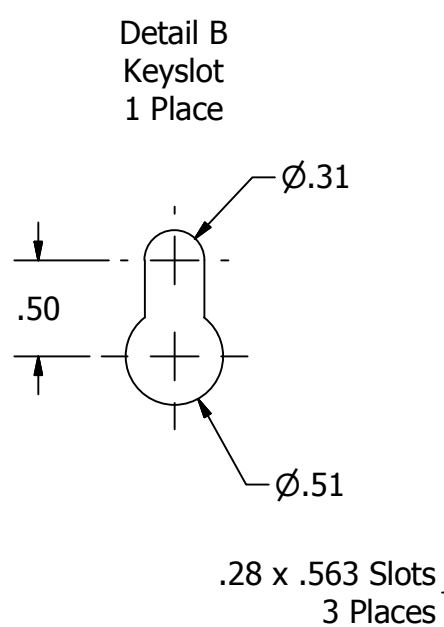
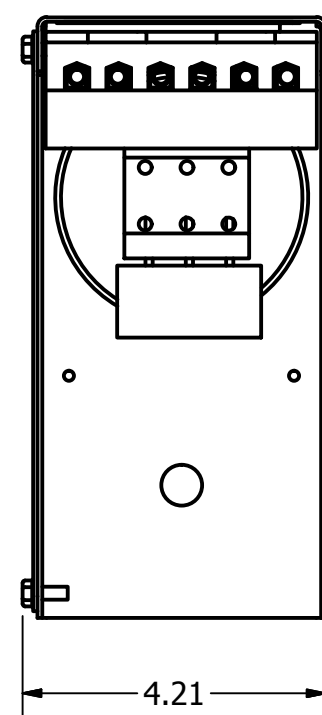
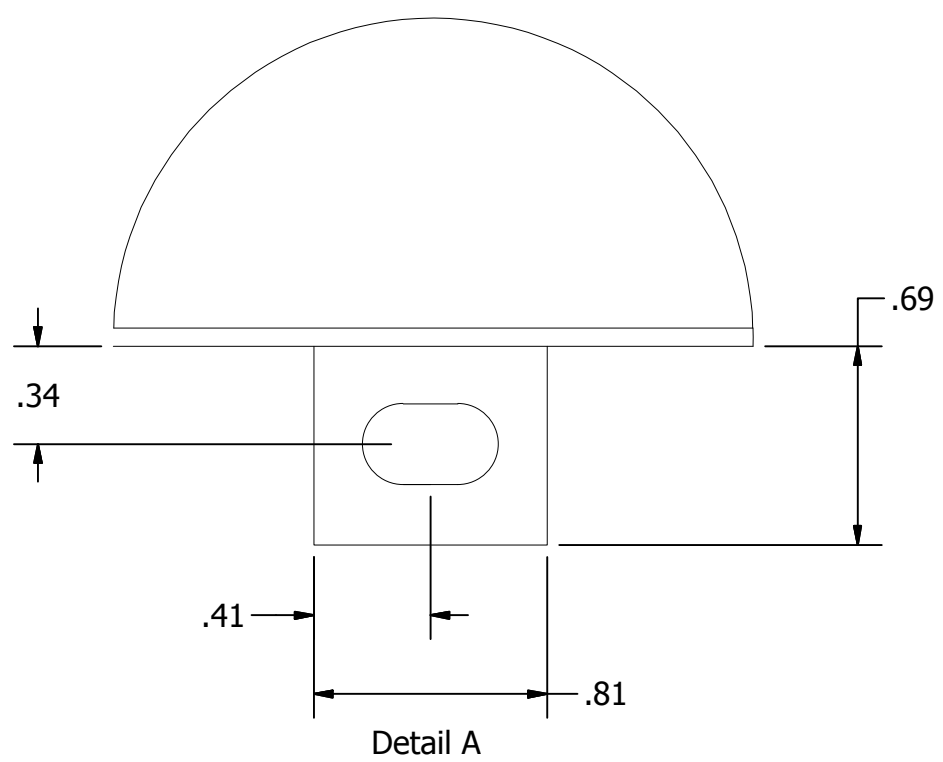
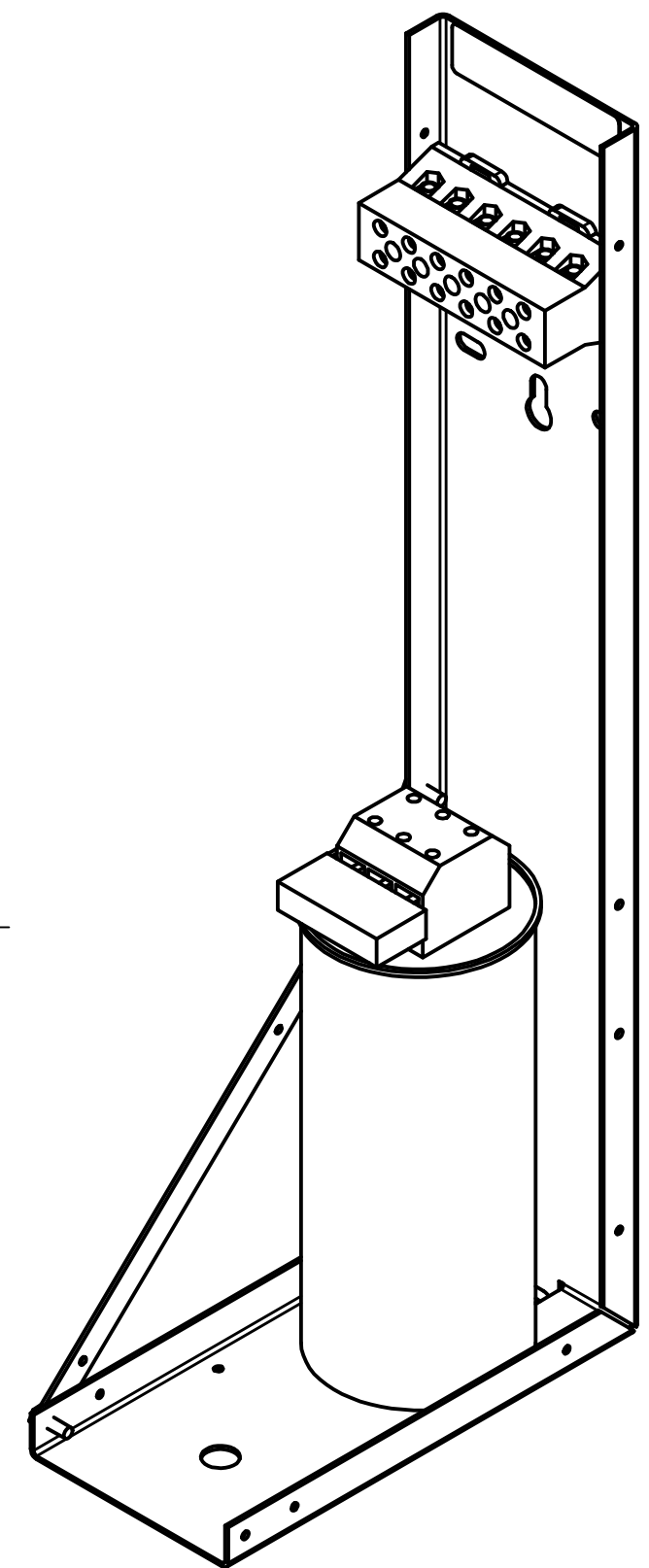
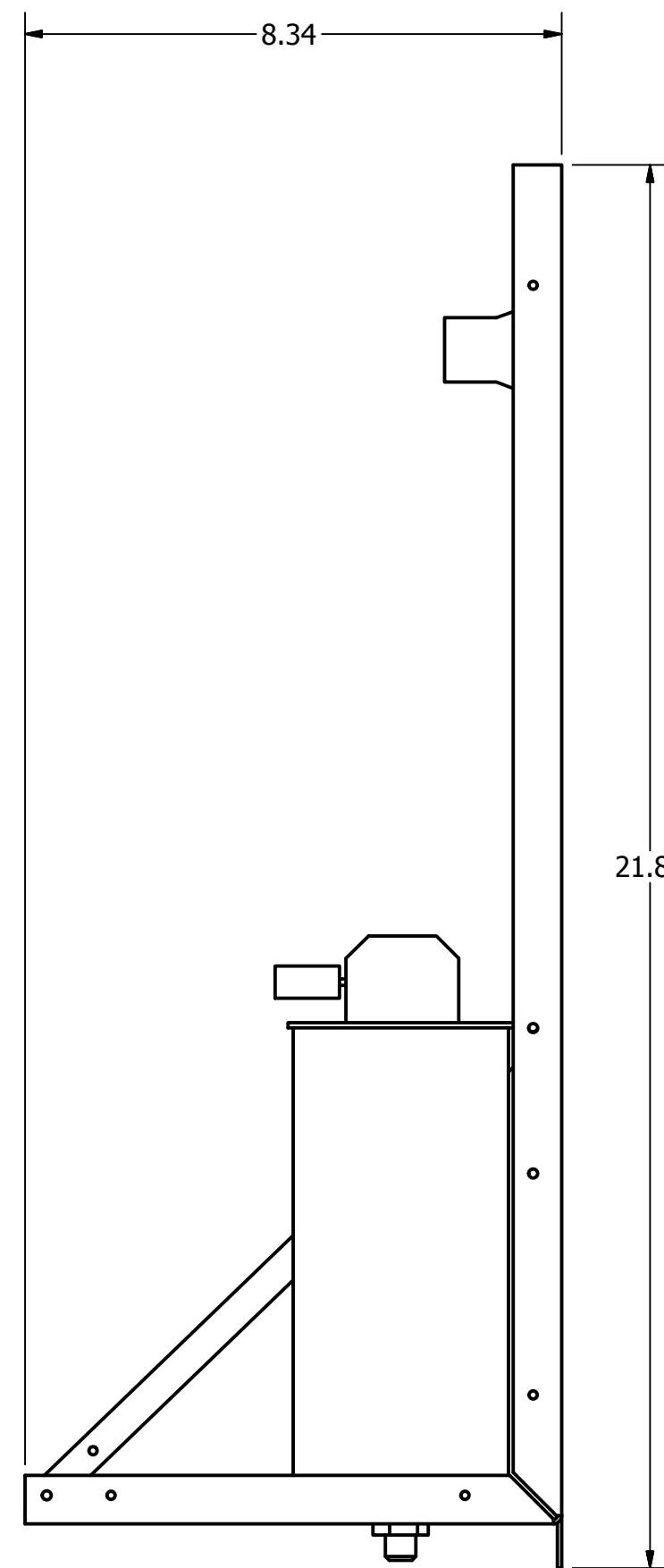


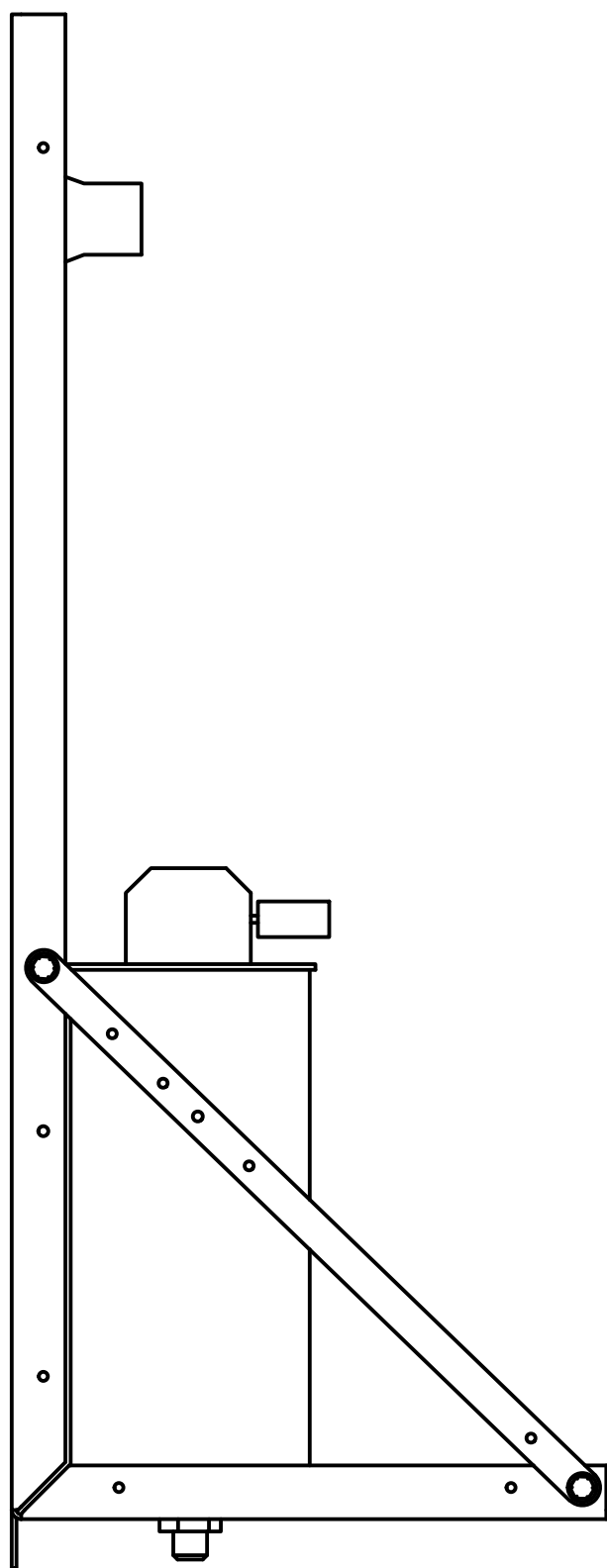
KPCUL008A60 | 480V | 7.5kVar | 25hp | 5.9lbs




See Detail A



Torque II Customer Wire
 35 (in·lbs) || 1-4 (AWG)
 30 (in·lbs) || 6-14 (AWG)
 25 (in·lbs) || 16-20 (AWG)
 20 (in·lbs) || 22 (AWG)



				TOLERANCES (EXCEPT AS NOTED)		 W132 N10611 Grant Drive Germantown, WI 53022	
				DECIMAL			
				.XX +/- .03		KPCUL008A60, 25HP, 7.5kVar PANELIZED CAPS	
				.XXX +/- .01			
D ECO: 3900 3+5KVAR CAPACITOR				3/8/17	JRN	FRACTIONAL	
TO SINGLE 8KVAR CAPACITOR						+/- 1/32	
NO				REVISION	DATE	BY	ANGULAR
							+/- 1/2°
						DRN. BY: BWM SCALE: TO FIT	
						DATE: 8/22/11 APRVD.:	
						DWG. No.: 104787DG C SHEET 1 OF 1	