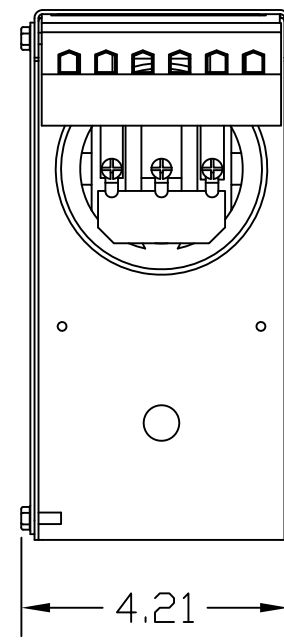
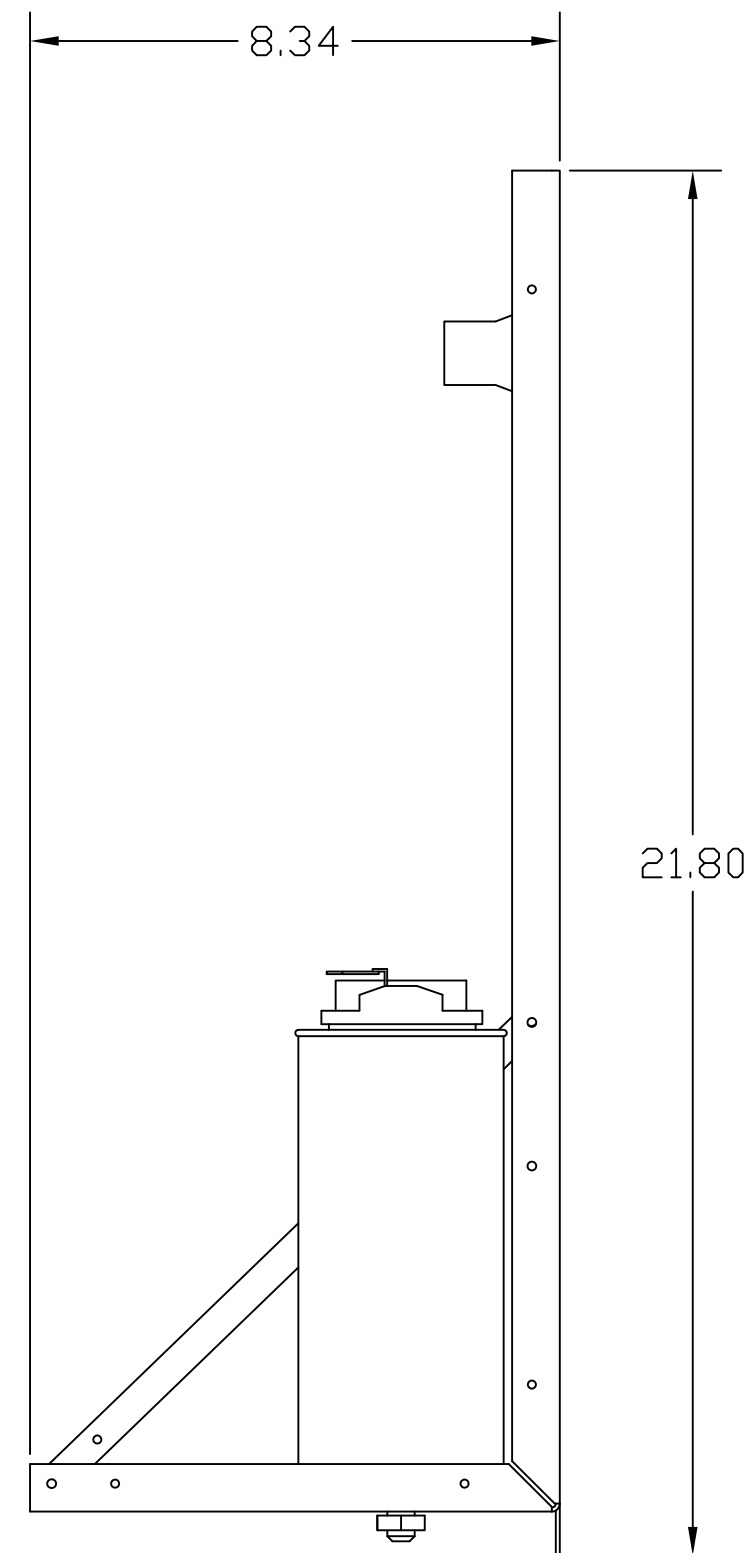
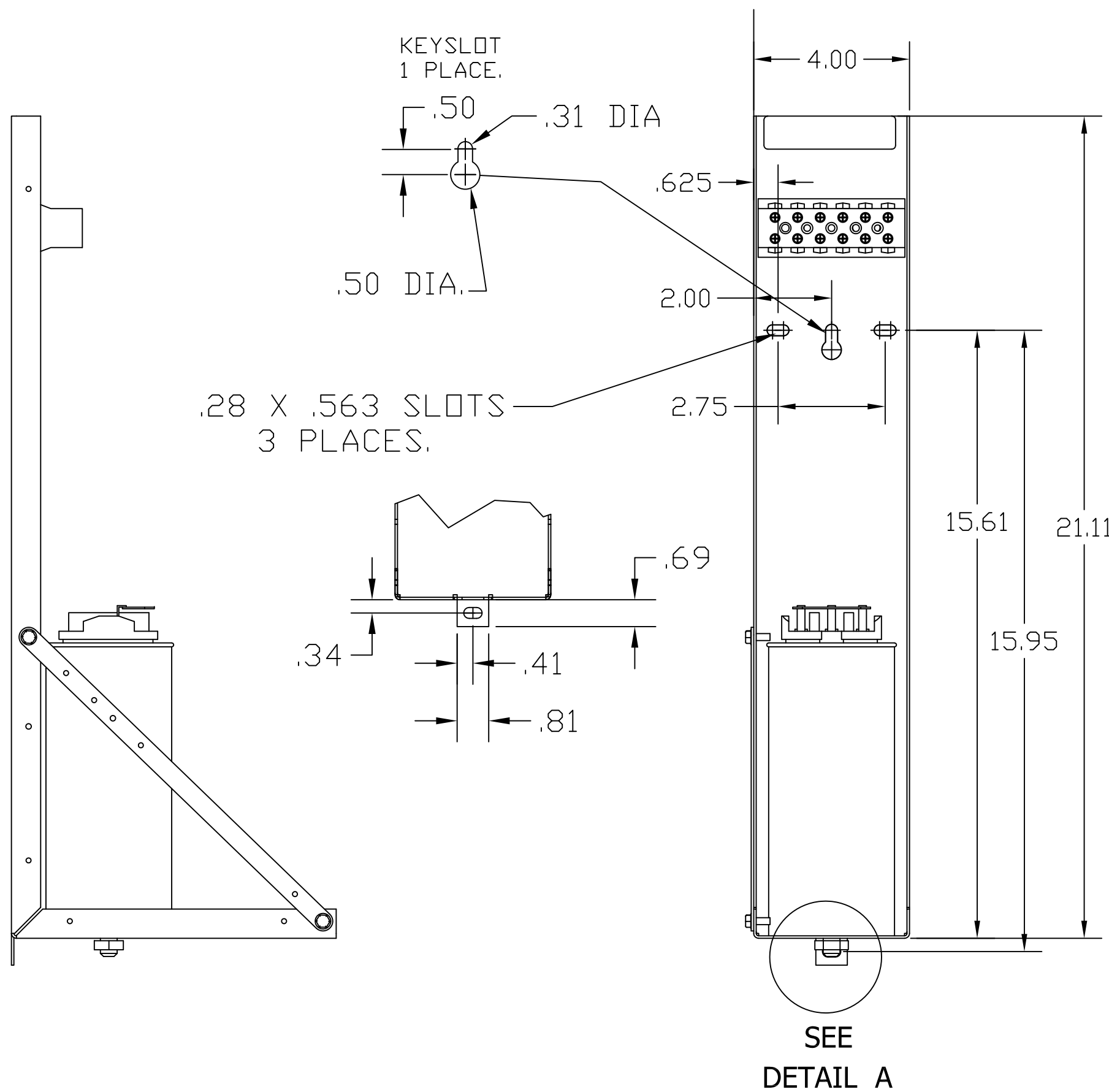
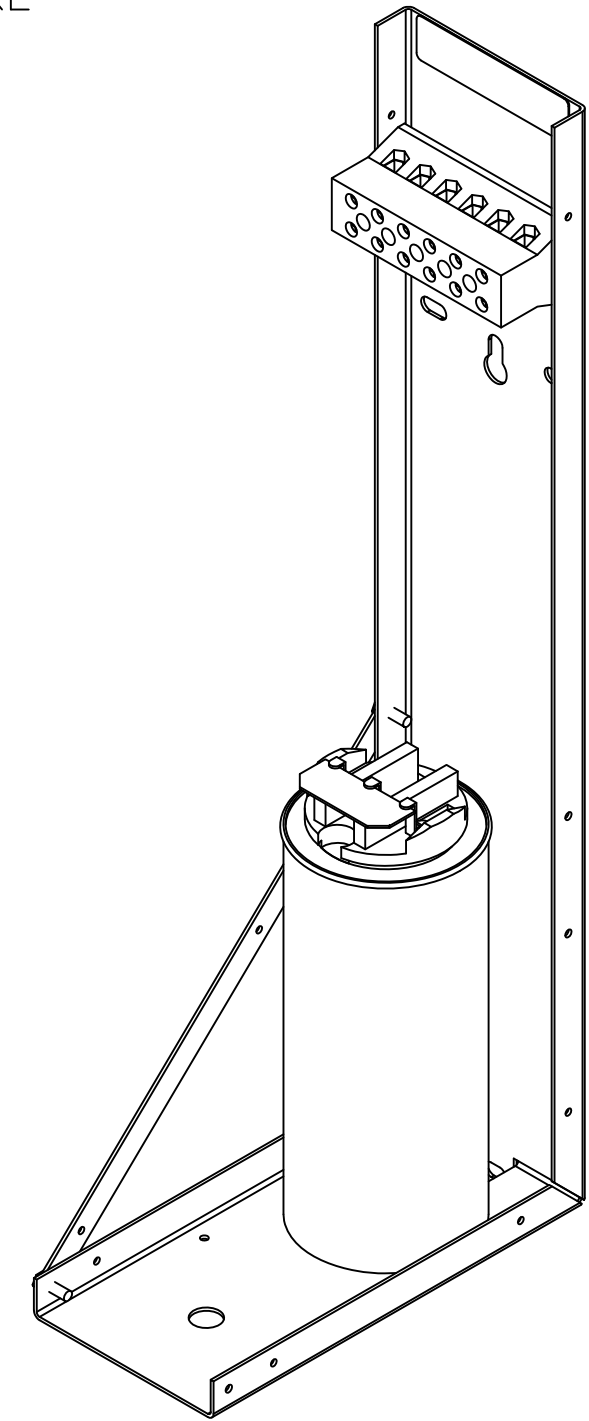


KPCUL006L50, 400V, 15.0kW, 6.03kVar.  
 APPROX. WEIGHT: 6LBS



TORQUE(LB-IN)=CUSTOMER WIRE

35=1 AWG THRU 4 AWG  
 30=6 AWG THRU 14 AWG  
 25=16 AWG THRU 20 AWG  
 20=22 AWG



NOTE: 27908, Manual KPC Installation Guide  
 MUST SHIP WITH EACH ASSEMBLY.

TCI, LLC CLAIMS  
 PROPRIETARY RIGHTS IN  
 THE MATERIAL HEREIN  
 DISCLOSED. IT IS  
 SUPPLIED WITHOUT  
 PREJUDICE TO ANY  
 PATENT RIGHTS OF TCI  
 AND MAY NOT BE  
 REPRODUCED OR USED  
 TO MANUFACTURE  
 ANYTHING SHOWN  
 THEREIN WITHOUT  
 WRITTEN PERMISSION  
 FROM TCI.

NO	REVISION	DATE	BY	TOLERANCES (EXCEPT AS NOTED)
B	2805 UPDATE BRACKET	1/11/12	DSW	DECIMAL .XX ±.02 .XXX±.01
A	AS BUILT	9/9/11	DSW	FRACTIONAL ± 1/32
				ANGULAR ± 1/2°

**TCI**® W132 N10611 Grant Drive  
 Germantown, WI 53022

KPCUL006L50, 15.0kW, 6.03kVar  
 PANELIZED CAPS

DRN. BY DSW DATE 8/29/11 DWG. NO. 104811DG  
 SCALE TO FIT SIZE C SHT.1 OF 1