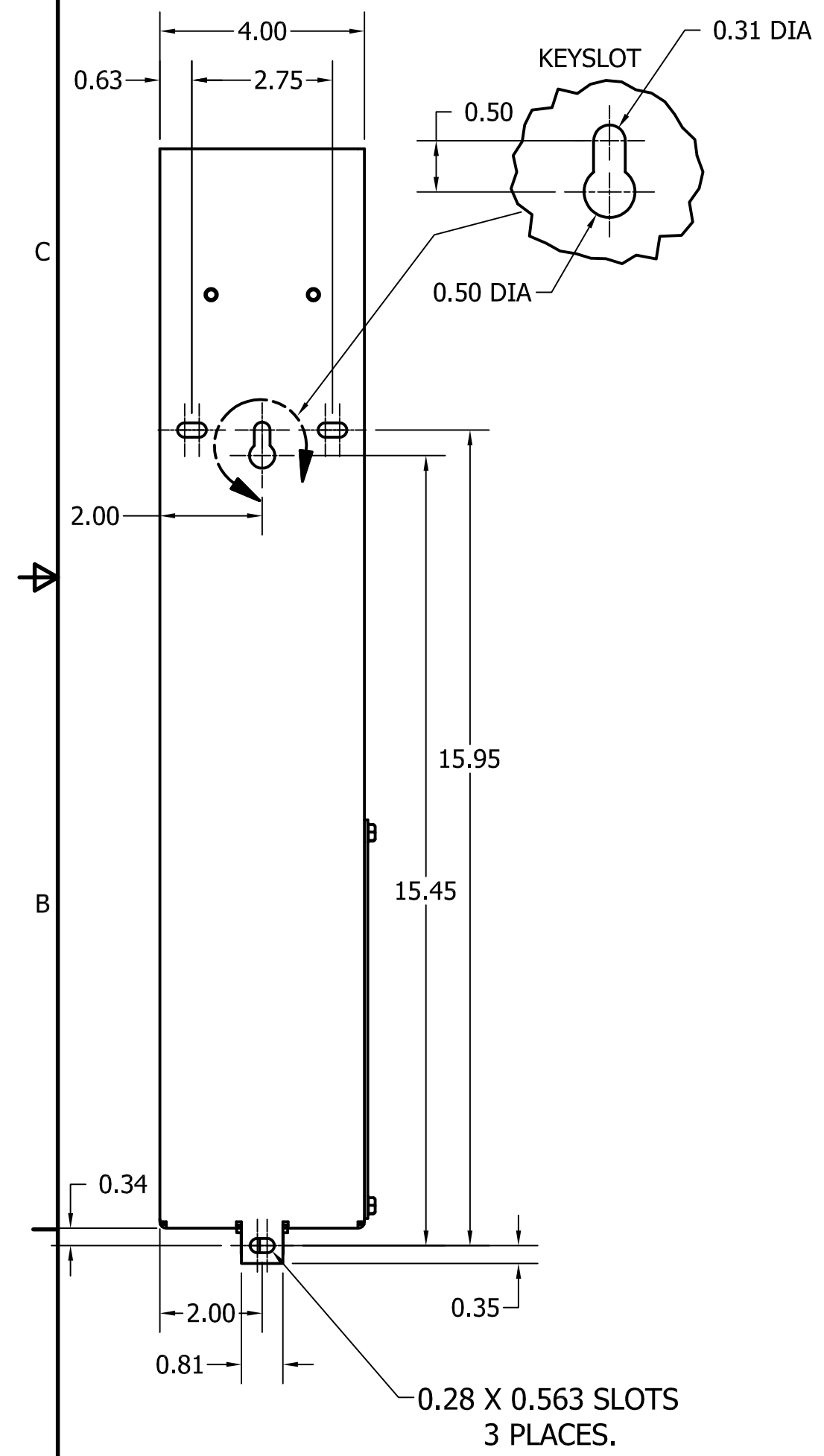
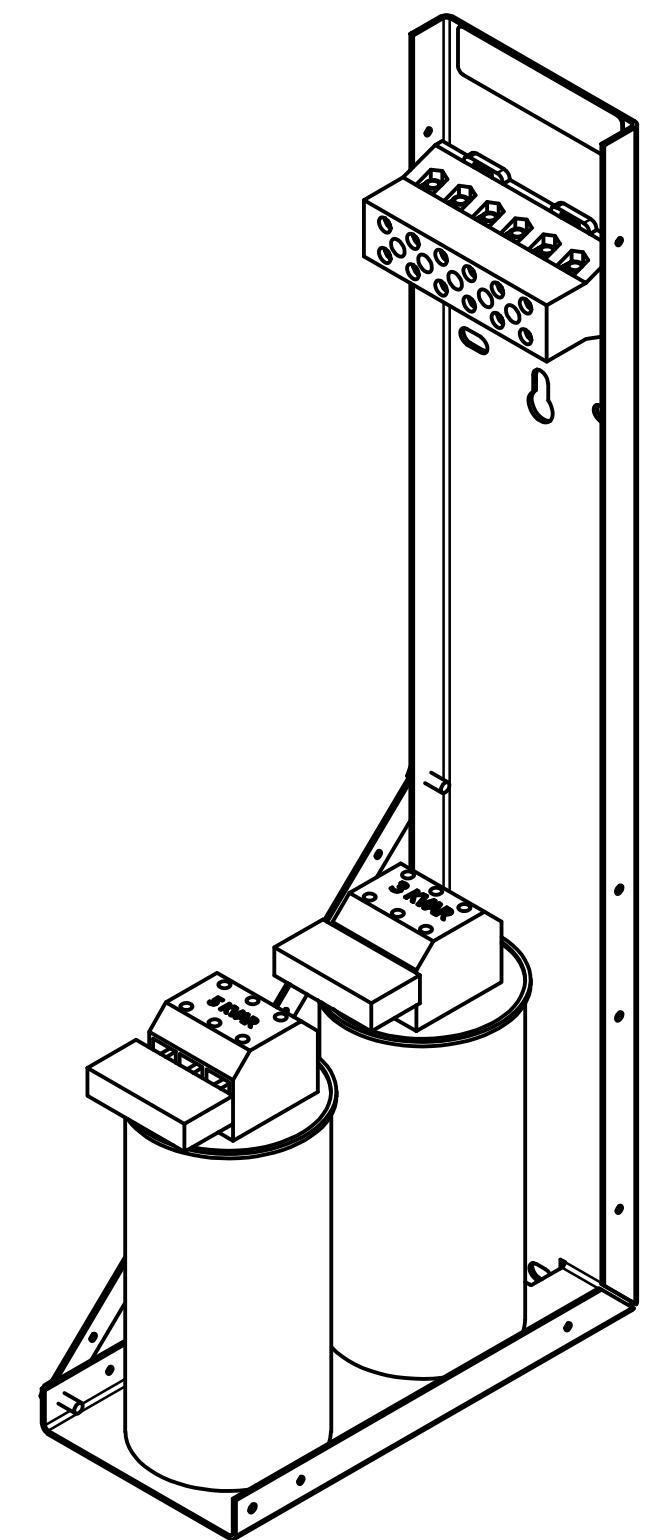
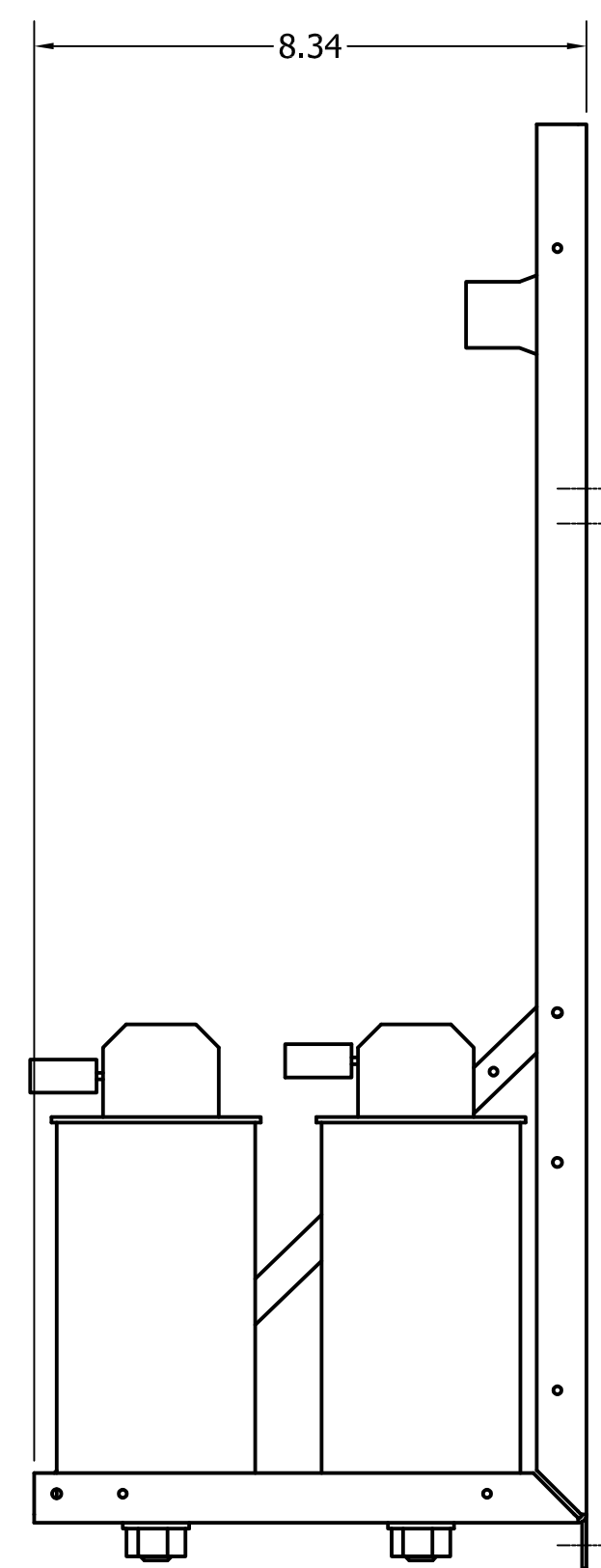
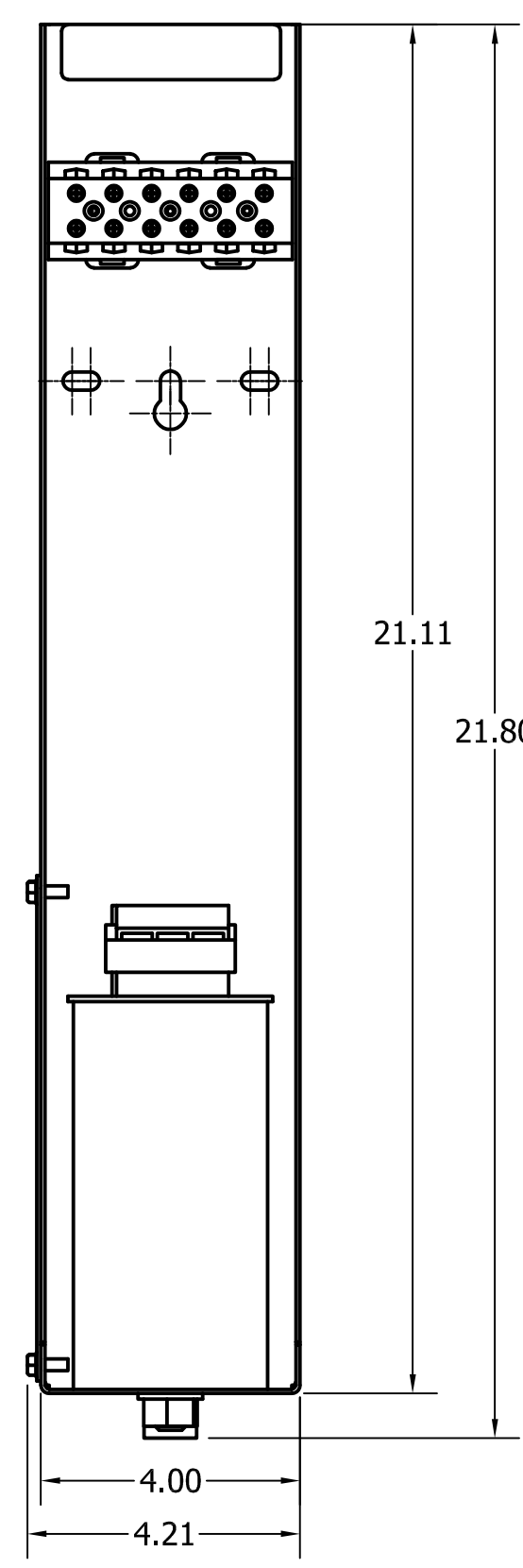
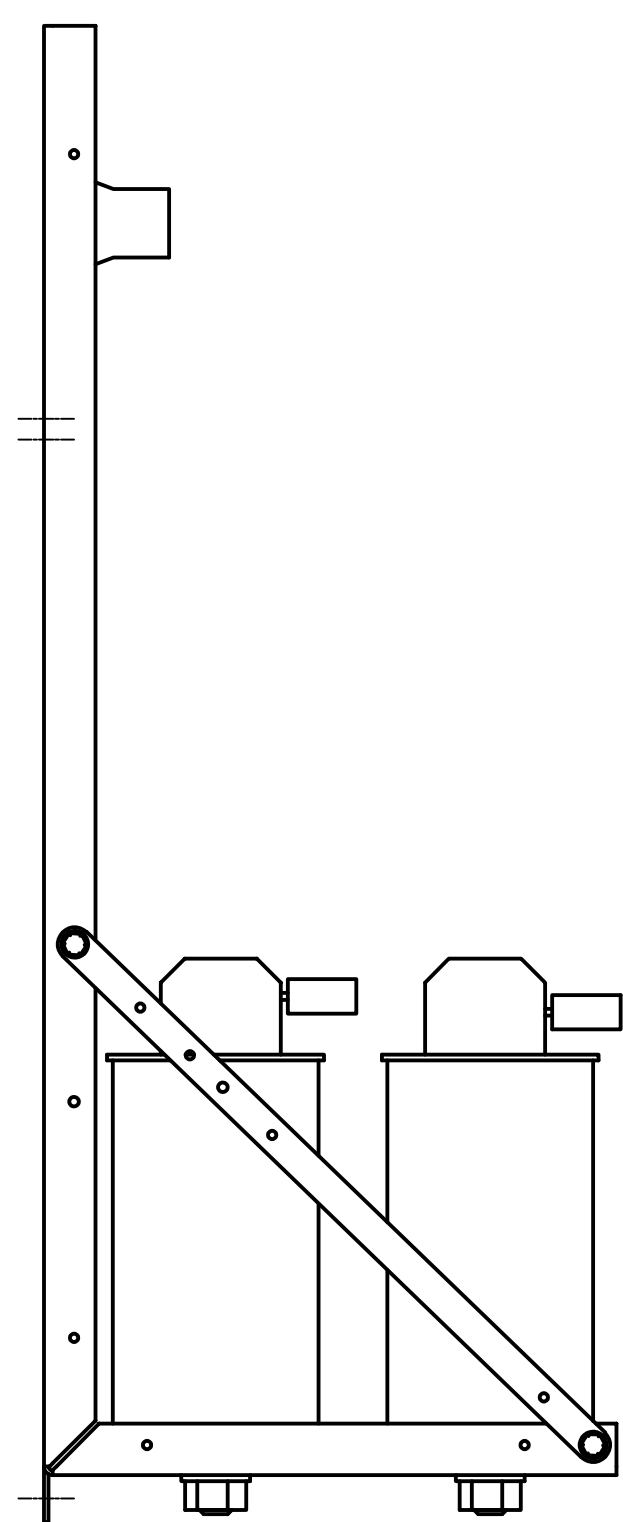
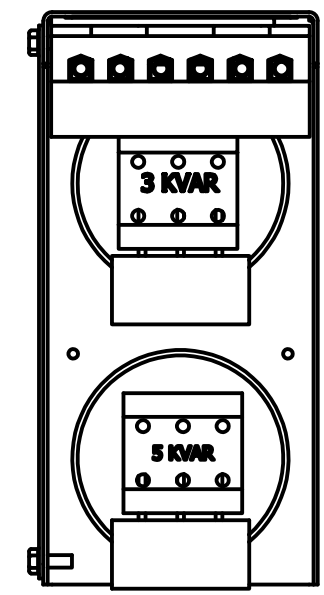



KPCUL005L50  
 KPC Assembly, 400V, 4.64kVar  
 Approx. Weight: 5.9LBS.  
 See KPC Capacitor Bank Installation Guide  
 For Wire Range and Torque.



CUSTOMER IS RESPONSIBLE FOR INSTALLATION  
 TO MEET ALL NATIONAL AND LOCAL ELECTRICAL CODES.

Material(s) Shall be RoHS Compliant

TCI, LLC CLAIMS PROPRIETARY RIGHTS IN THE MATERIAL HEREIN DISCLOSED. IT IS SUPPLIED WITHOUT PREJUDICE TO ANY PATENT RIGHTS OF TCI AND MAY NOT BE REPRODUCED OR USED TO MANUFACTURE ANYTHING SHOWN THEREIN WITHOUT WRITTEN PERMISSION FROM TCI.					TOLERANCES (EXCEPT AS NOTED)	 W132 N10611 Grant Drive Germantown, WI 53022  <b>KPCUL005L50</b> <b>KPC Assembly, 400V, 4.64kVar</b>  DRN BY: DSW DATE: 8/11/29 DWG. SIZE: C104810DG SCALE: APRVD: SHEET 1 OF 1
					DECIMAL	
					.XX ± .25 .XXX ± .10	
					FRACTIONAL ± 1/16	
	C	3743 UPDATE DRAWING	9/13/16	DSW	ANGULAR ± 1°	
	NO	REVISION	DATE	BY		