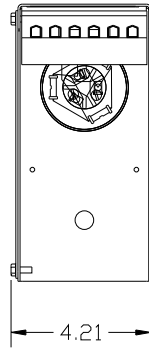


KPCUL005C60, 600V, 4.5kVar, 15HP.

APPROX. WEIGHT: 4.5LBS



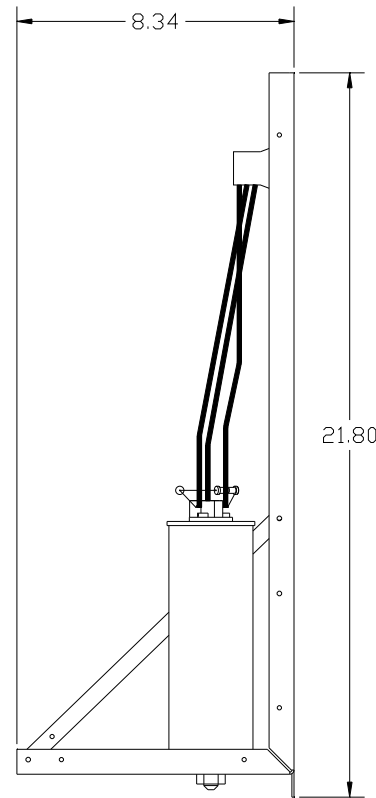
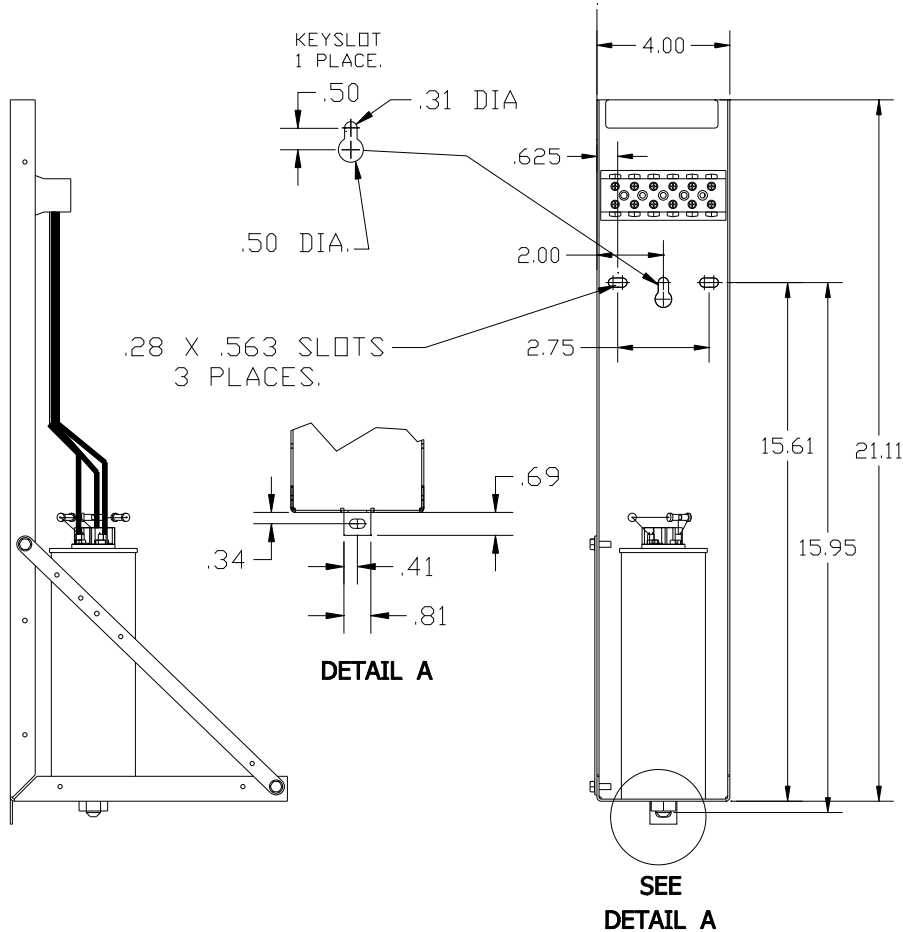
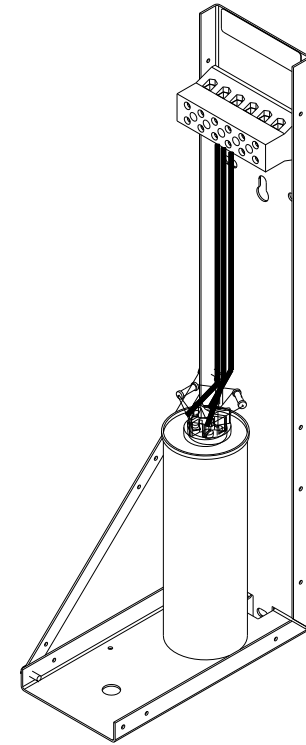
TORQUE(LB-IN)=CUSTOMER WIRE

35=1 AWG THRU 4 AWG

30=6 AWG THRU 14 AWG

25=16 AWG THRU 20 AWG

20=22 AWG



<p>TCL LLC CLAIMS PROPRIETARY RIGHTS IN THE MATERIAL HEREIN DISCLOSED. IT IS SUPPLIED WITHOUT PREJUDICE TO ANY PATENT RIGHTS OF TCL AND MAY NOT BE REPRODUCED OR USED TO MANUFACTURE ANYTHING SHOWN THEREIN WITHOUT WRITTEN PERMISSION FROM TCL.</p>				TOLERANCES (EXCEPT AS NOTED):	W132 N10611 Grant Drive German town, WI 53022	
				DECIMAL		KPCUL005C60
					.XX ± .03	15HP, 4.5kVar
					.XXX ± .01	PANELIZED CAPS
	B	2805 UPDATE BRACKET	1/12/12	DSW	FRACTIONAL ± 1/32	DRN BY DSW DATE 8/29/11 DWG NO. C 104832DG
A	AS BUILT	9/8/11	DSW	ANGULAR ± 1/2°	SCALE TO FIT SIZE	
NO	REVISION	DATE	BY		SHT. 1 of 1	