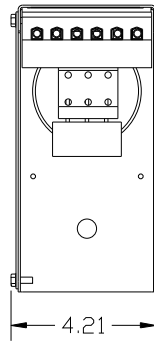


KPCUL005A60, 480V, 5kVar, 15HP.

APPROX. WEIGHT: 4.8LBS



TORQUE(LB-IN)=CUSTOMER WIRE

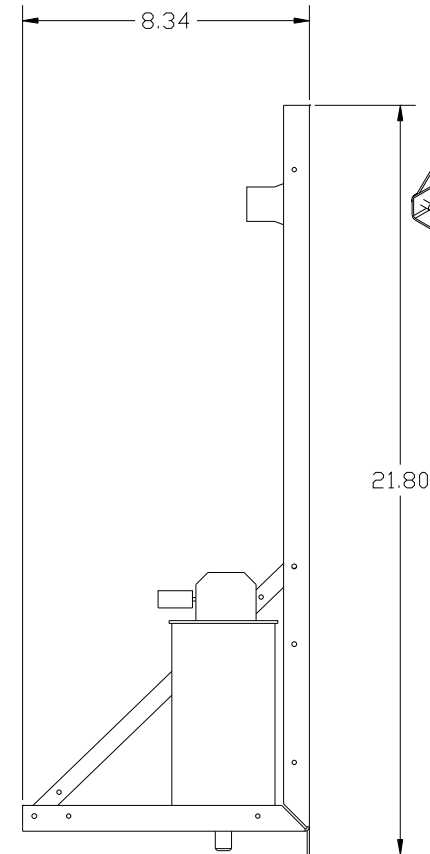
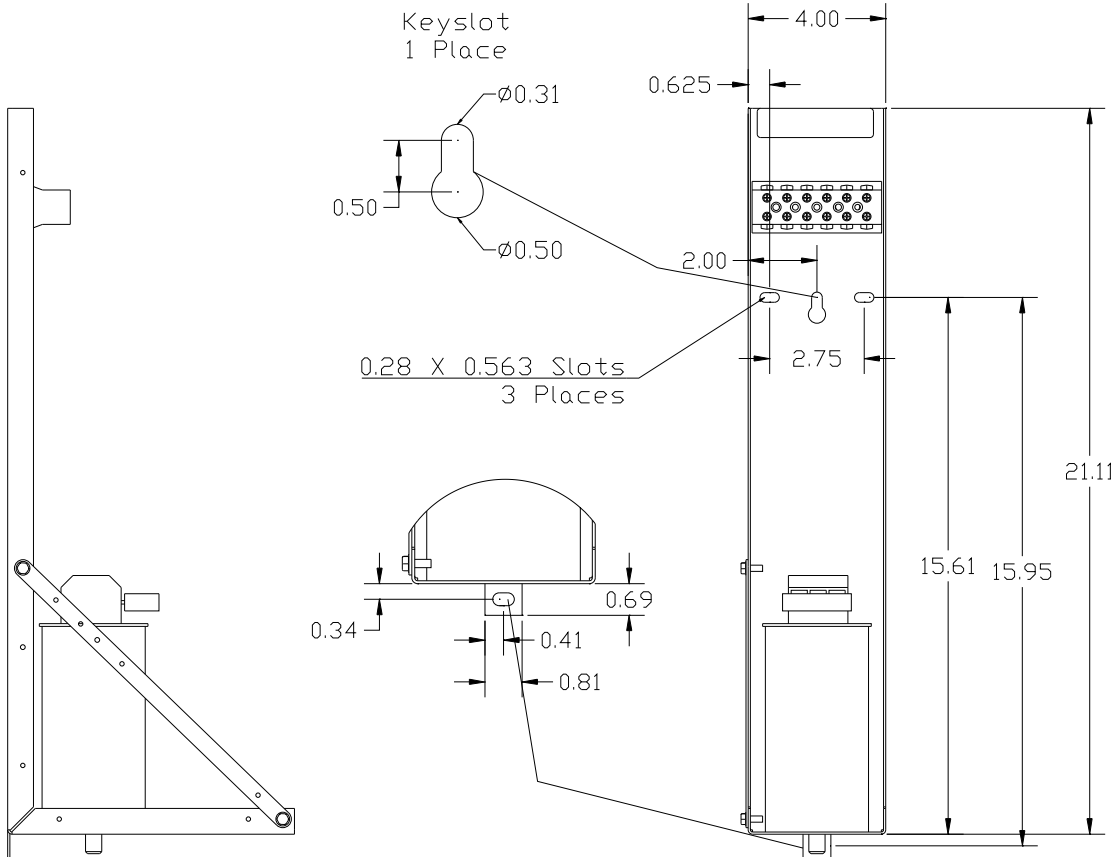
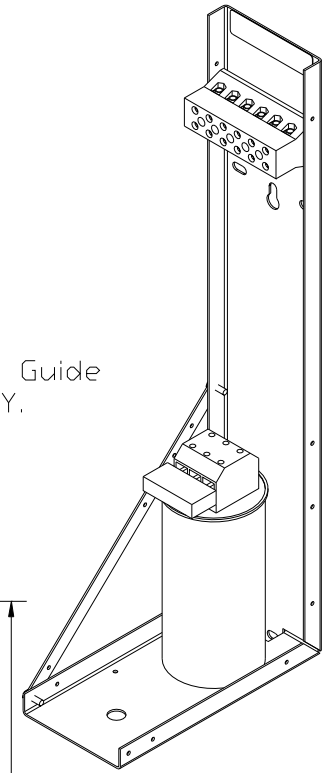
35=1 AWG THRU 4 AWG

30=6 AWG THRU 14 AWG

25=16 AWG THRU 20 AWG

20=22 AWG

NOTE: 27908, Manual KPC Installation Guide  
MUST SHIP WITH EACH ASSEMBLY.



<p>TCL, LLC CLAIMS PROPRIETARY RIGHTS IN THE MATERIAL HEREIN DISCLOSED. IT IS SUPPLIED WITHOUT PREJUDICE TO ANY PATENT RIGHTS OF TCL AND MAY NOT BE REPRODUCED OR USED TO MANUFACTURE ANYTHING SHOWN THEREIN WITHOUT WRITTEN PERMISSION FROM TCL.</p>					TOLERANCES (EXCEPT AS NOTED): DECIMAL	W132 N10611 Grant Drive Germantown, WI 53022
					.XX ±.03	
						.XXX ±.01
	B	CAP CHANGE	5/22/14	DSW	FRACTIONAL ± 1/32	DRN BY DSW DATE 8/22/11 DWG. NO. 104785DG SCALE TO FIT SIZE C
	A	AS BUILT	9/1/11	DSW	ANGULAR ± 1/2°	
NO	REVISION	DATE	BY			SHT. 1 OF 1