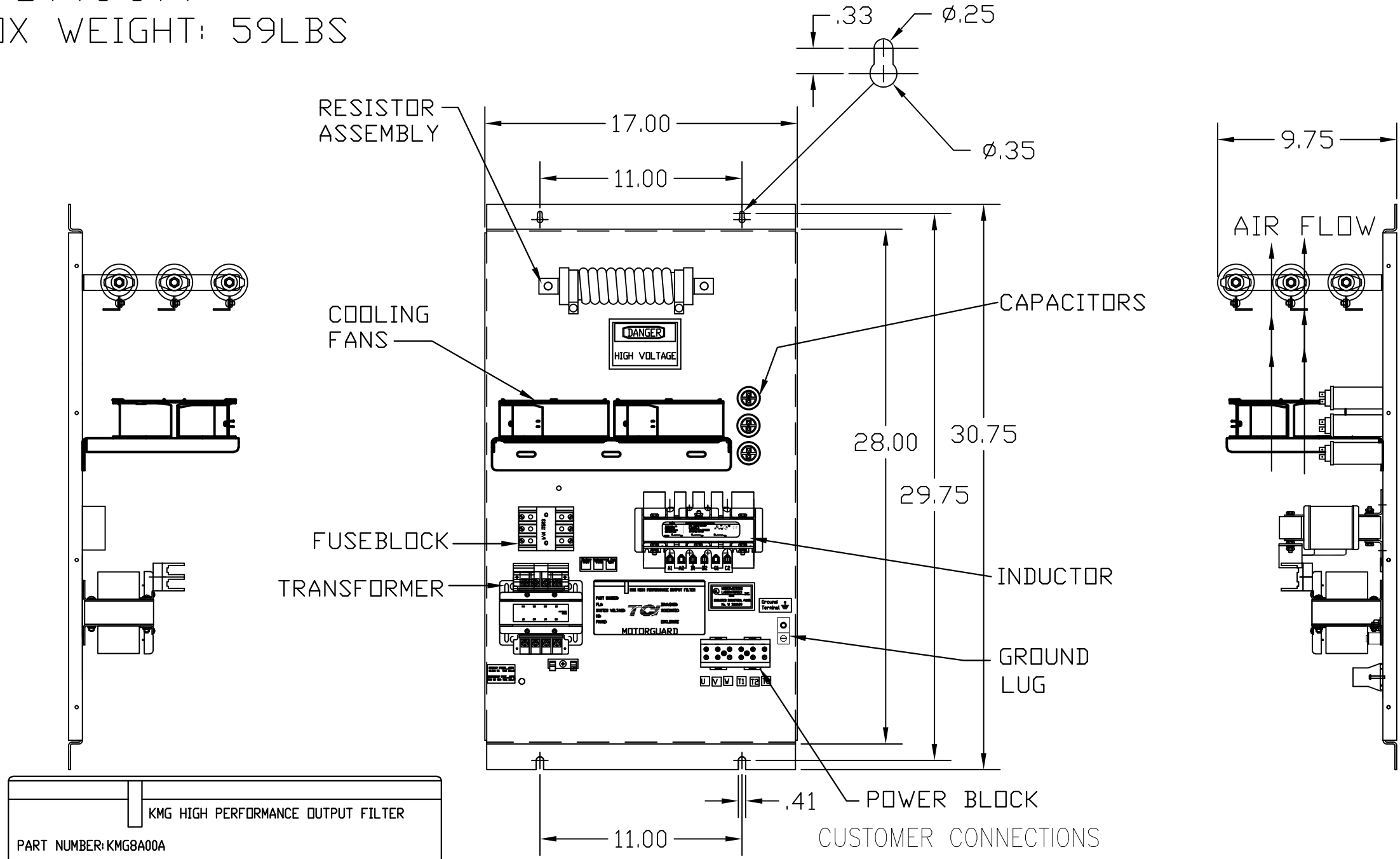


# KMG8A00A

APPROX WEIGHT: 59LBS

FOR SCHEMATIC SEE DRAWING P/N 24281-1A



GROUND LUG:  
 WIRE RANGE-1/0 TO #14 AWG.  
 1/0 AWG thru 2 AWG 50 IN-LBS. MAX.  
 4 AWG thru 6 AWG 45 IN-LBS. MAX.  
 8 AWG 40 IN-LBS. MAX.  
 10 AWG thru 14 AWG 35 IN-LBS. MAX.

KMG HIGH PERFORMANCE OUTPUT FILTER

PART NUMBER: KMG8A00A

FLA: 8                      DRAWING#: 104326DG

SYSTEM VOLTAGE: 480      SCHEMATIC: 24281-1A

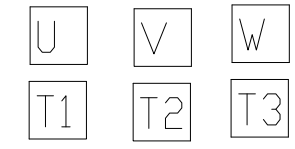
HZ: 60

PHASE: 3

**MOTORGUARD**

PB-POWER INPUT BLOCK:

1 AWG thru 4 AWG	35 IN-LBS. MAX.
6 AWG thru 14 AWG	30 IN-LBS. MAX.
16 AWG thru 20 AWG	25 IN-LBS. MAX.
22 AWG	20 IN-LBS. MAX.



CUSTOMER IS RESPONSIBLE FOR PROPER COOLING OF COMPONENTS IN CUSTOMERS ASSEMBLY.

CUSTOMER IS RESPONSIBLE FOR PROPER INSTALLATION OF ASSEMBLY IN ACCORDANCE WITH LOCAL AND NATIONAL CODES.

TOLERANCES (EXCEPT AS NOTED)			
			DECIMAL
			.XX ± .02
			.XXX ± .01
B	4061 1 FAN TO 2 FANS	7/14/17	JRN
A	2731 GRD UPDATE	3/10/2011	DSW
NO	REVISION	DATE	BY
			ANGULAR ± 1/2°

**TCI**® W132 N10611 Grant Drive  
 Germantown, WI 53022

Standard SineWave Filter  
 Open, 5HP, 8AMP, 480V

DRN. BY	DSW	DATE	10/04/2010	DWG. NO.	B 104326DG
SCALE	TO FIT	APRVD.			SHT. 1 OF 1