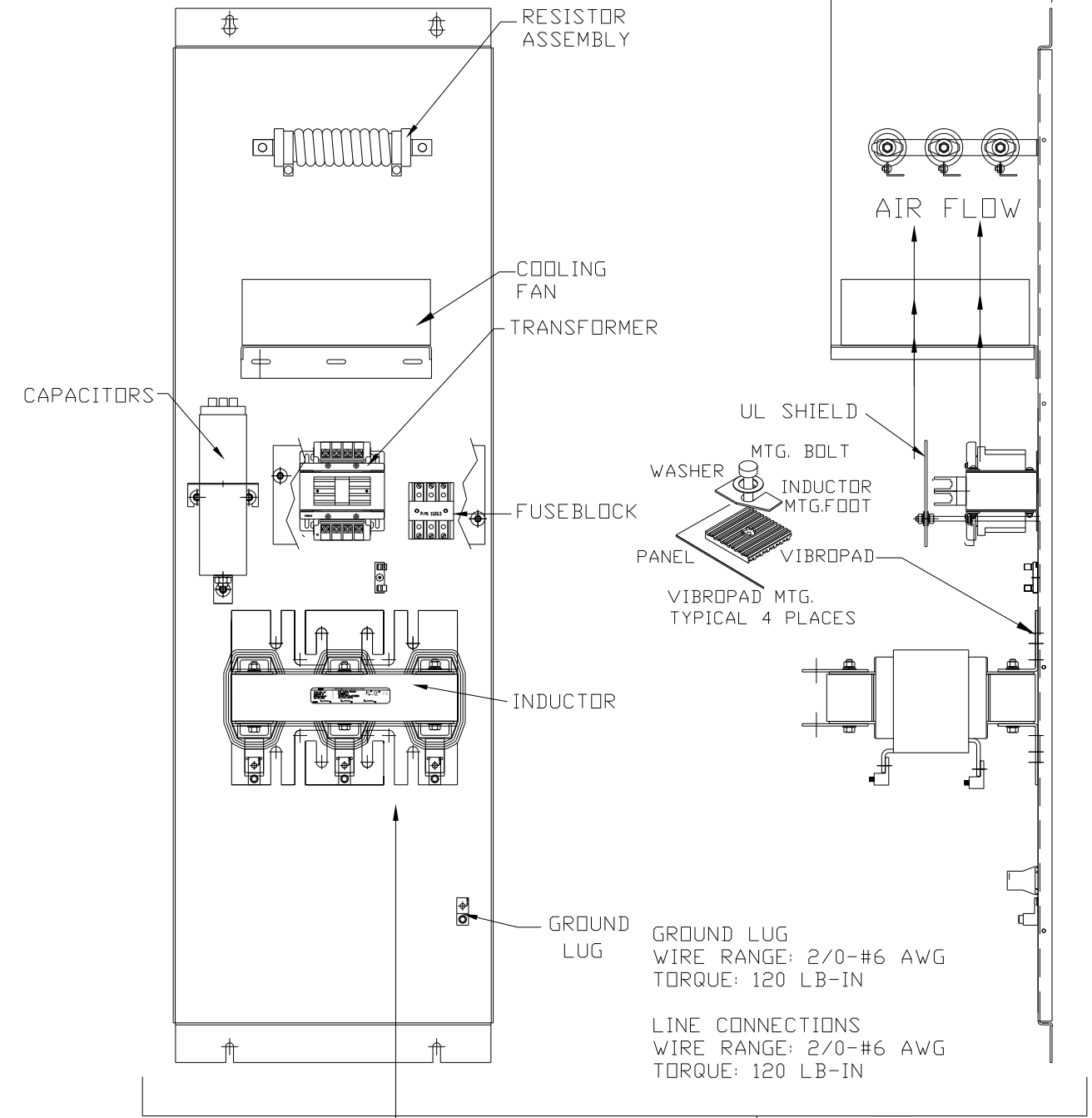
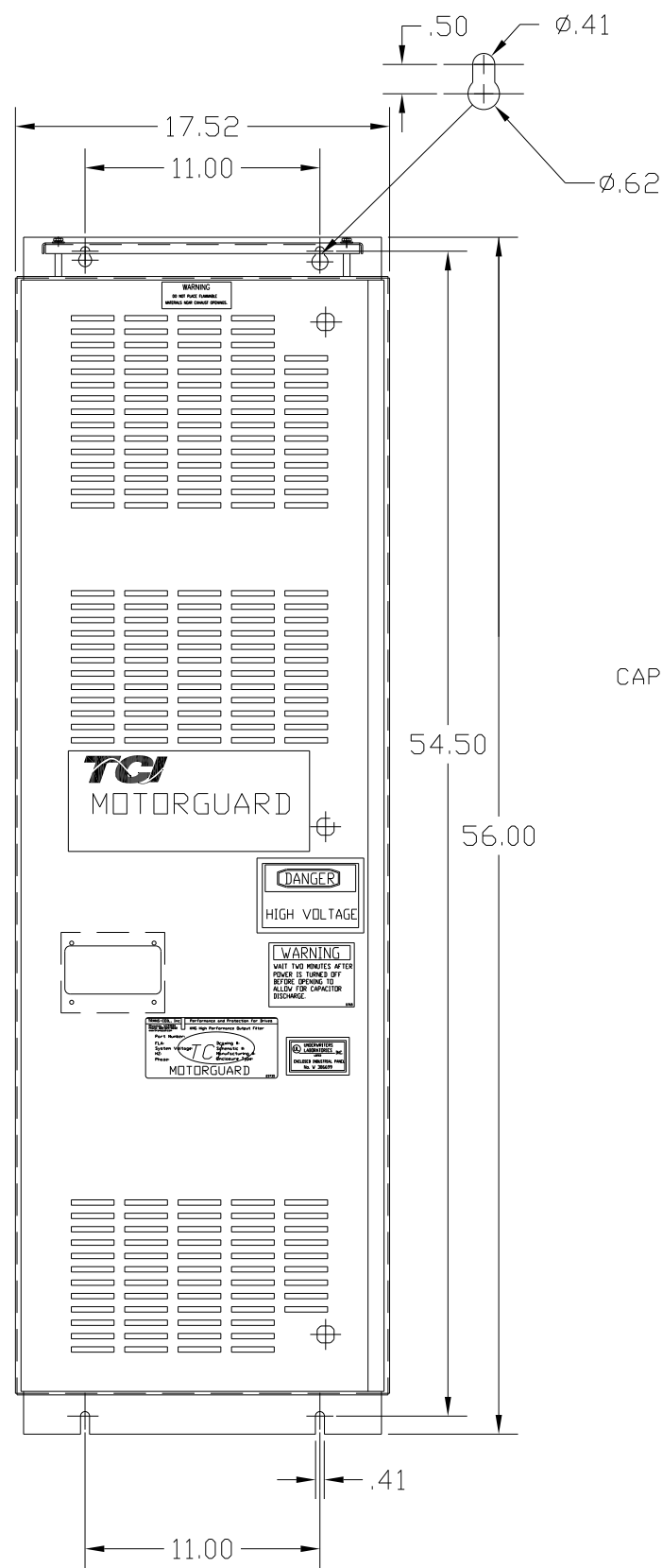
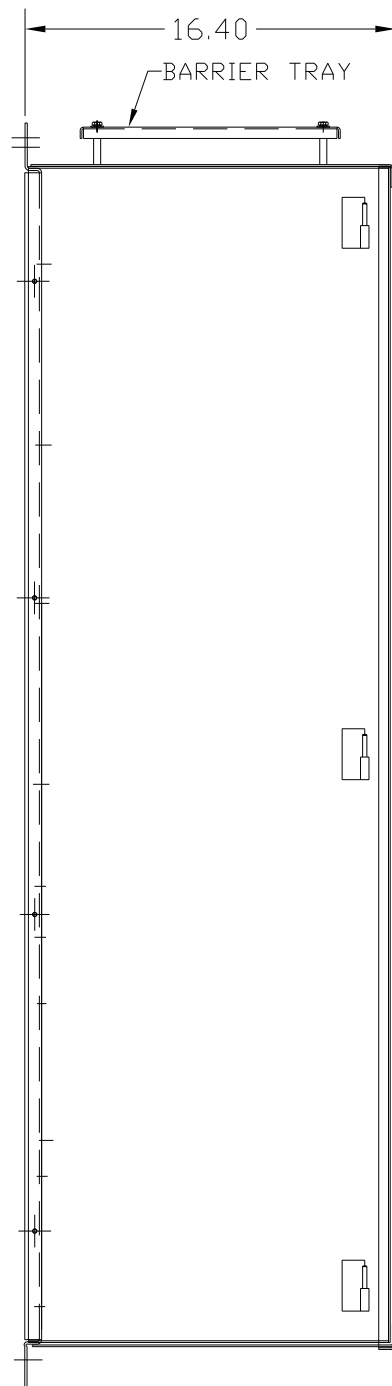


KMG80C01A

APPROX WEIGHT: 263LBS

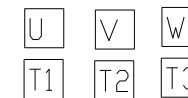
FOR SCHEMATIC SEE DRAWING P/N 24281-23A



SUGGESTED LOCATION FOR CUSTOMER INPUT/OUTPUT

ENCLOSURE NOT SHOWN

CUSTOMER CONNECTIONS



CUSTOMER IS RESPONSIBLE FOR PROPER INSTALLATION OF ASSEMBLY IN ACCORDANCE WITH LOCAL AND NATIONAL CODES.

KMG HIGH PERFORMANCE OUTPUT FILTER

PART NUMBER: KMG80C01A

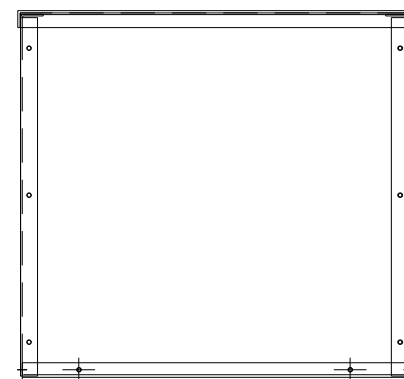
FLA: 80 DRAWING#: 104444DG

SYSTEM VOLTAGE: 600 SCHEMATIC: 24281-23A

HZ: 80

PHASE: 3

MOTORGUARD



				TOLERANCES (EXCEPT AS NOTED)		7878 N. 86th STREET MILWAUKEE, WI 53224	
				DECIMAL		Standard, SineWave Filter	
				.XX ± .02		ENCLOSED, 75HP, 80AMP, 600V	
				.XXX ± .01		DRN. BY DSW DATE 10/14/2010 DWG. NO. 104444DG	
				FRACTIONAL		SCALE TO FIT APRVD. SHT. 1 OF 1	
				± 1/32			
				ANGULAR			
				± 1/2°			
NO	REVISION	DATE	BY				