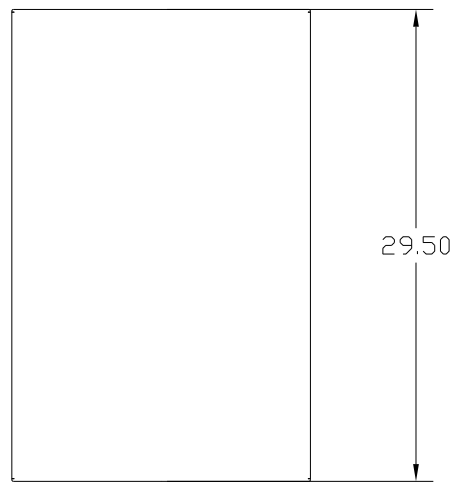
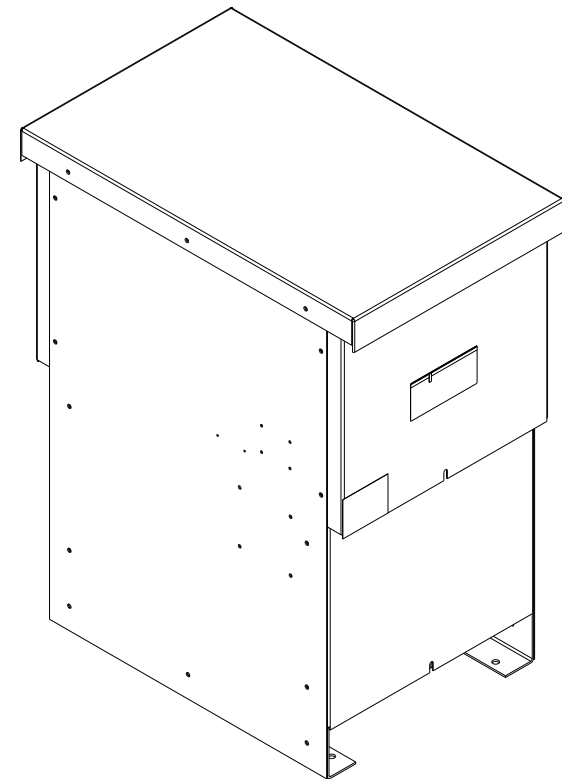


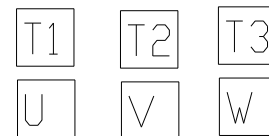
GENERAL PURPOSE, 1/3R, COLOR: GREY.



KMG HIGH PERFORMANCE OUTPUT FILTER	
PART NUMBER: KMG80AG010000	
FLA: 80	DRAWING#: 103884DG
SYSTEM VOLTAGE: 480V	SCHEMATIC: 26888
HZ: 60	
PHASE: 3	ENCLOSURE TYPE: 1/3R
MOTORGUARD	

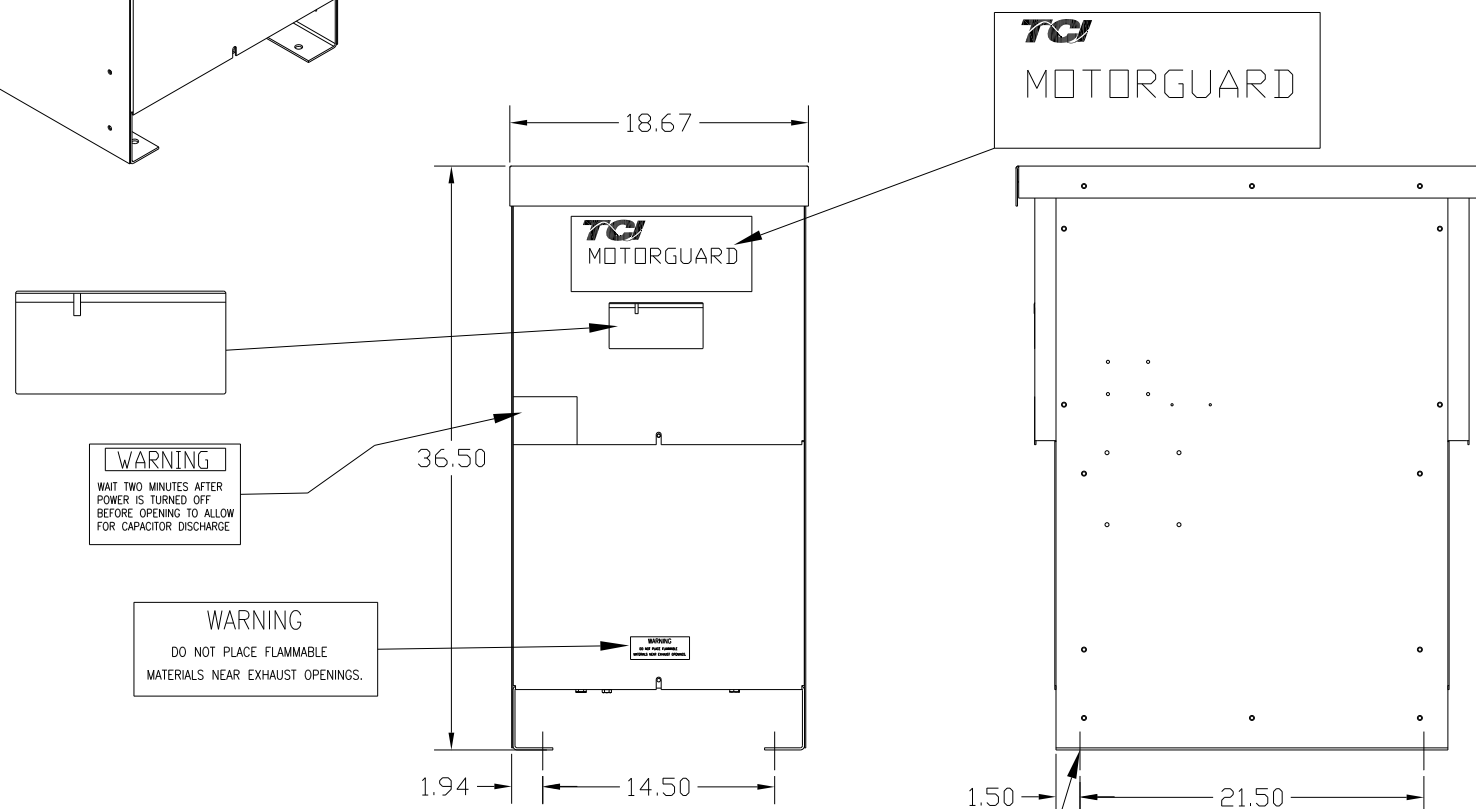
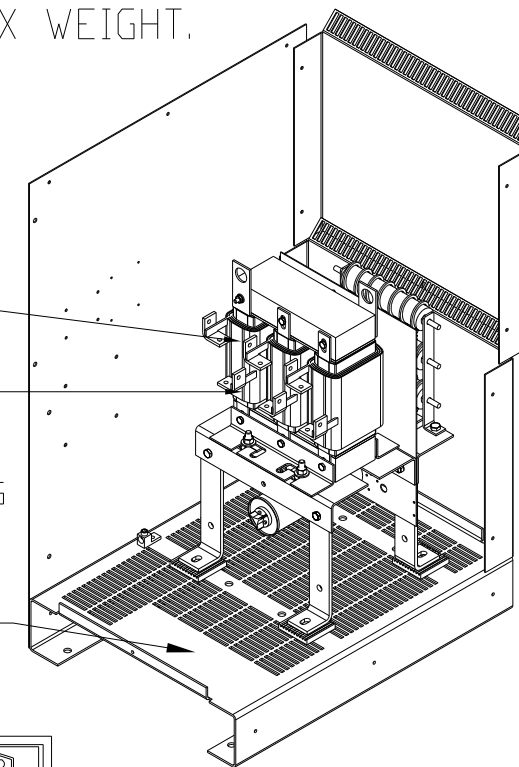
235 LBS : APPROX WEIGHT.

CUSTOMER CONNECTIONS
(.28 DIA HOLES 6 PLACES.)



GROUND LUG
WIRE RANGE: 2/0-#6 AWG
TORQUE: 120 LB-IN

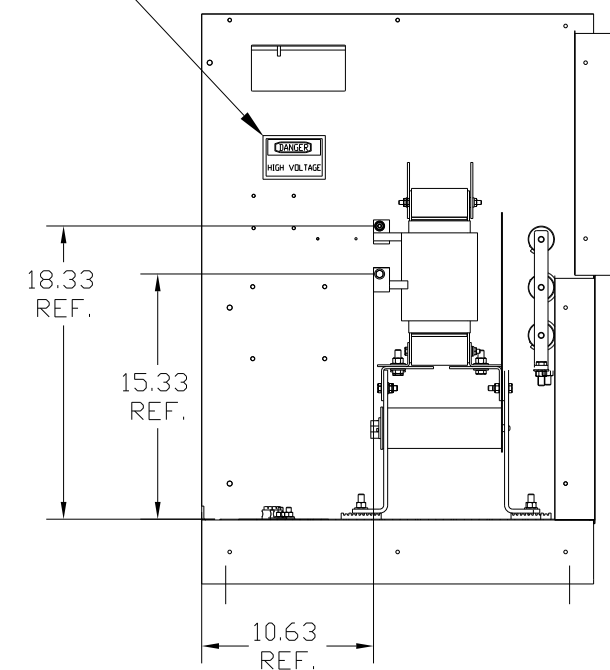
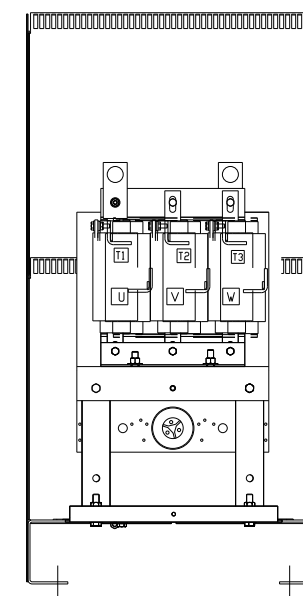
CUSTOMER WIRE ENTRANCE
AND EXIT LOCATION.



WARNING
WAIT TWO MINUTES AFTER
POWER IS TURNED OFF
BEFORE OPENING TO ALLOW
FOR CAPACITOR DISCHARGE

WARNING
DO NOT PLACE FLAMMABLE
MATERIALS NEAR EXHAUST OPENINGS.

.56 DIA HOLES
4 PLACES.



PART NUMBER: KMG80AG010000
FOR SCHEMATIC SEE DRAWING # 26888.

CUSTOMER IS RESPONSIBLE FOR INSTALLATION
TO MEET ALL NATIONAL AND LOCAL ELECTRICAL CODES.

				TOLERANCES (EXCEPT AS NOTED)		7878 N. 86th STREET MILWAUKEE, WI 53224	
				DECIMAL			
				.XX ± .03		KMG, LRC FILTER STANDARD 80 AMP 480/3/80, 1/3R	
				.XXX ± .01			
				FRACTIONAL ± 1/32			
				ANGULAR ± 1/2°		DRN. BY DSW DATE 12/02/08 DWG. NO. 103884DG SCALE TO FIT APPRVD. C SHT. 1 OF 1	
NO	REVISION	DATE	BY				