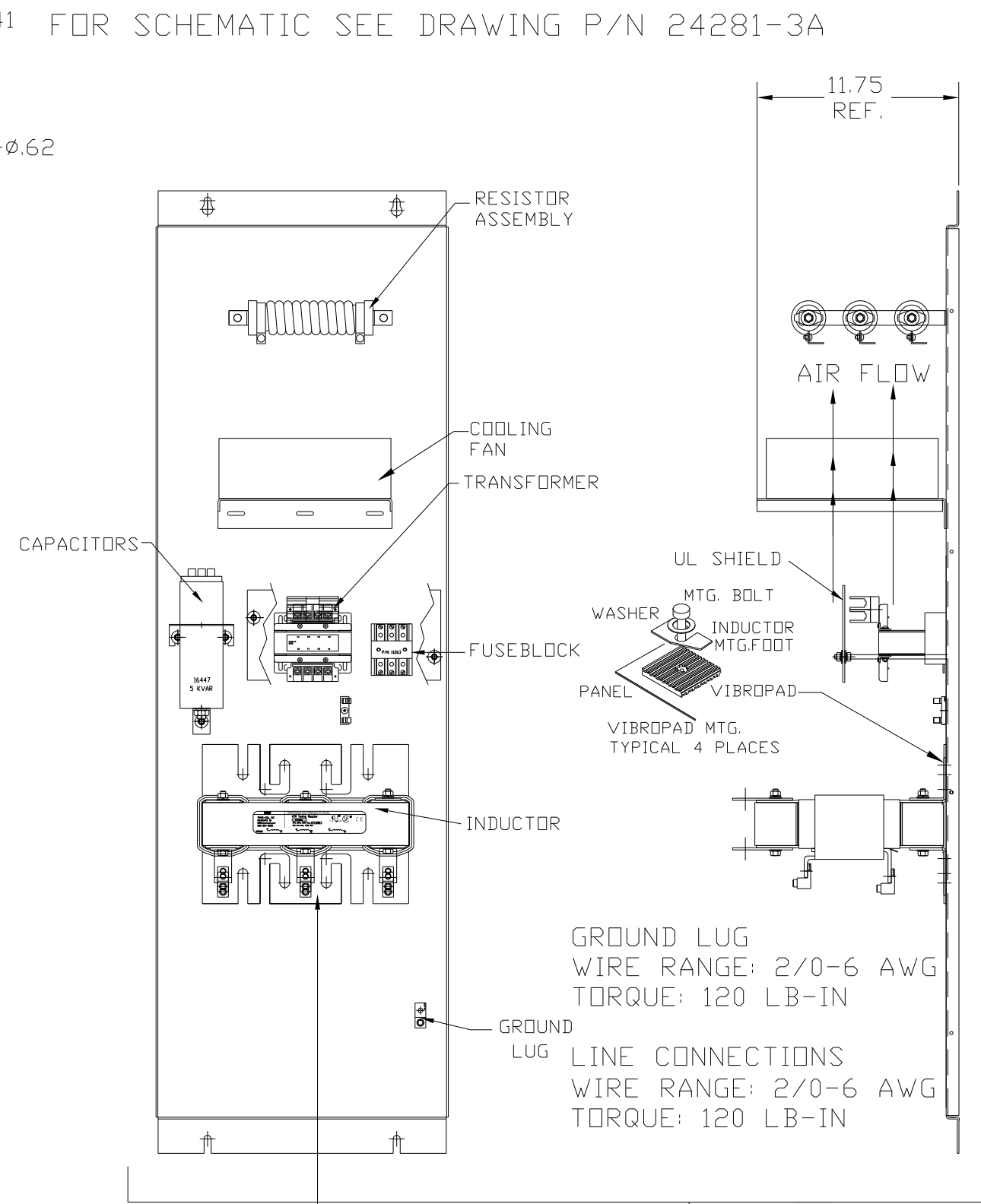
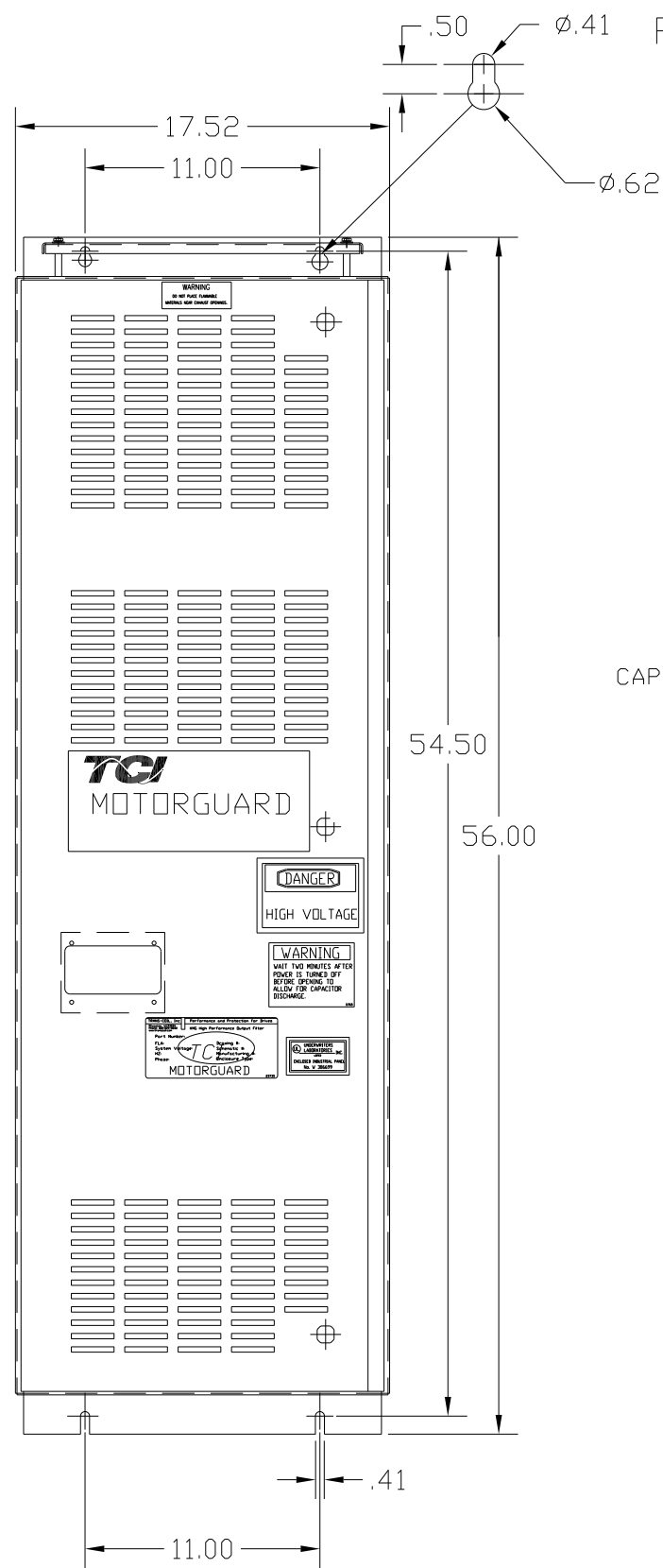
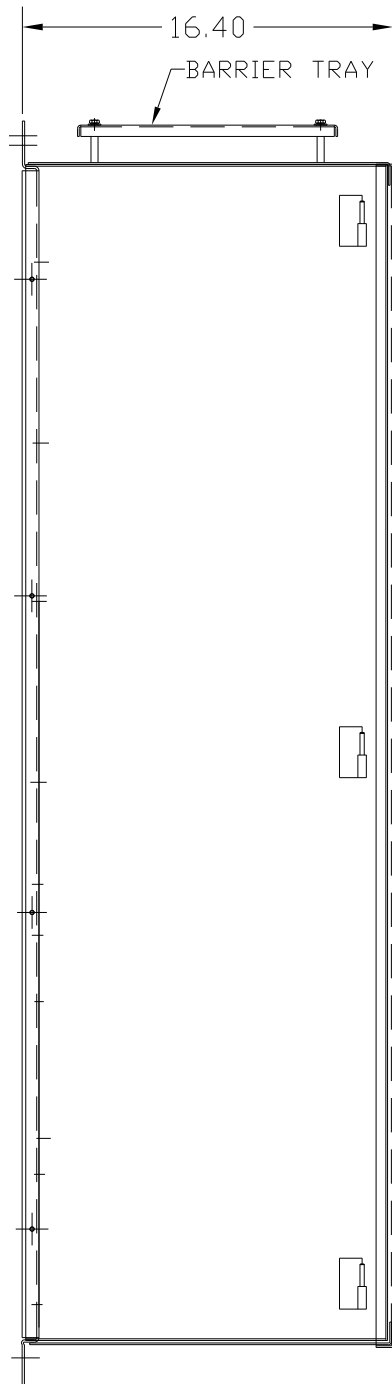


KMG80A01A

APPROX WEIGHT: 259LBS

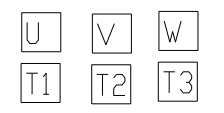


GROUND LUG
WIRE RANGE: 2/0-6 AWG
TORQUE: 120 LB-IN

LINE CONNECTIONS
WIRE RANGE: 2/0-6 AWG
TORQUE: 120 LB-IN

SUGGESTED LOCATION FOR CUSTOMER INPUT/OUTPUT

CUSTOMER CONNECTIONS



CUSTOMER IS RESPONSIBLE FOR PROPER INSTALLATION OF ASSEMBLY IN ACCORDANCE WITH LOCAL AND NATIONAL CODES.

KMG HIGH PERFORMANCE OUTPUT FILTER

PART NUMBER: KMG81A01A

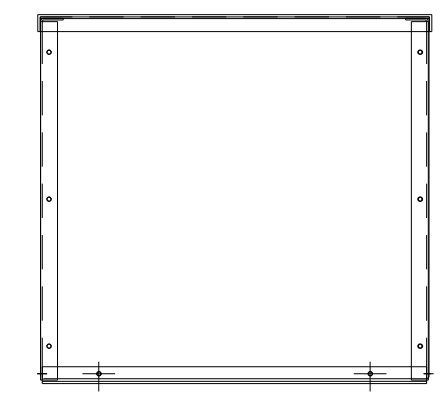
FLA: 81 DRAWING#: 104357DG

SYSTEM VOLTAGE: 480 SCHEMATIC: 24281-3A

HZ: 80

PHASE: 3

MOTORGUARD



				TOLERANCES (EXCEPT AS NOTED)		7878 N. 86th STREET MILWAUKEE, WI 53224	
				DECIMAL		Standard SineWave Filter	
				.XX ± .02		ENCLOSED, 60HP, 80AMP, 480V	
				.XXX ± .01		DRN. BY DSW DATE 10/07/2010 DWG. NO. 104357DG	
				FRACTIONAL		SCALE TO FIT APRVD. C	
				± 1/32		SHT. 1 OF 1	
				ANGULAR			
				± 1/2°			
NO	REVISION	DATE	BY				