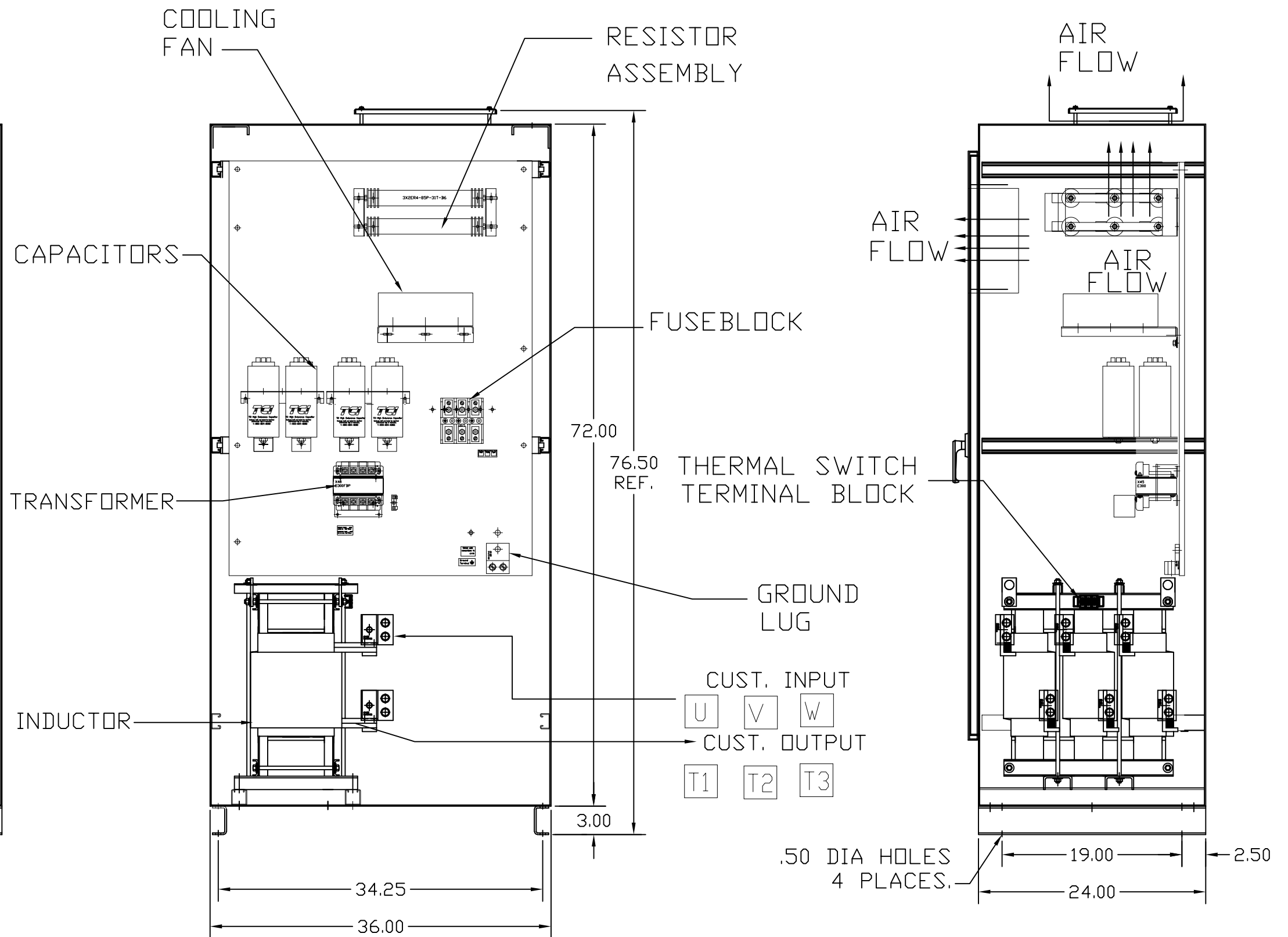
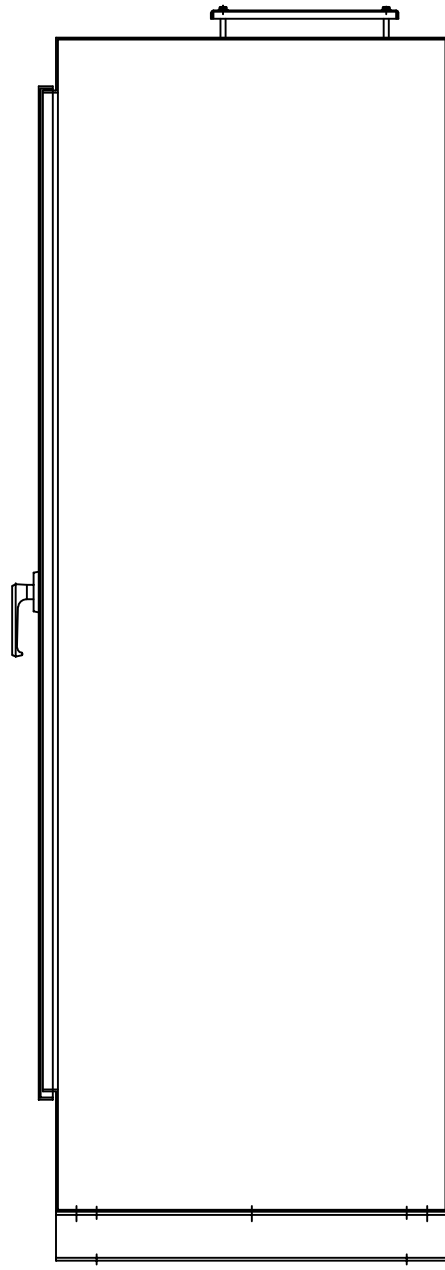
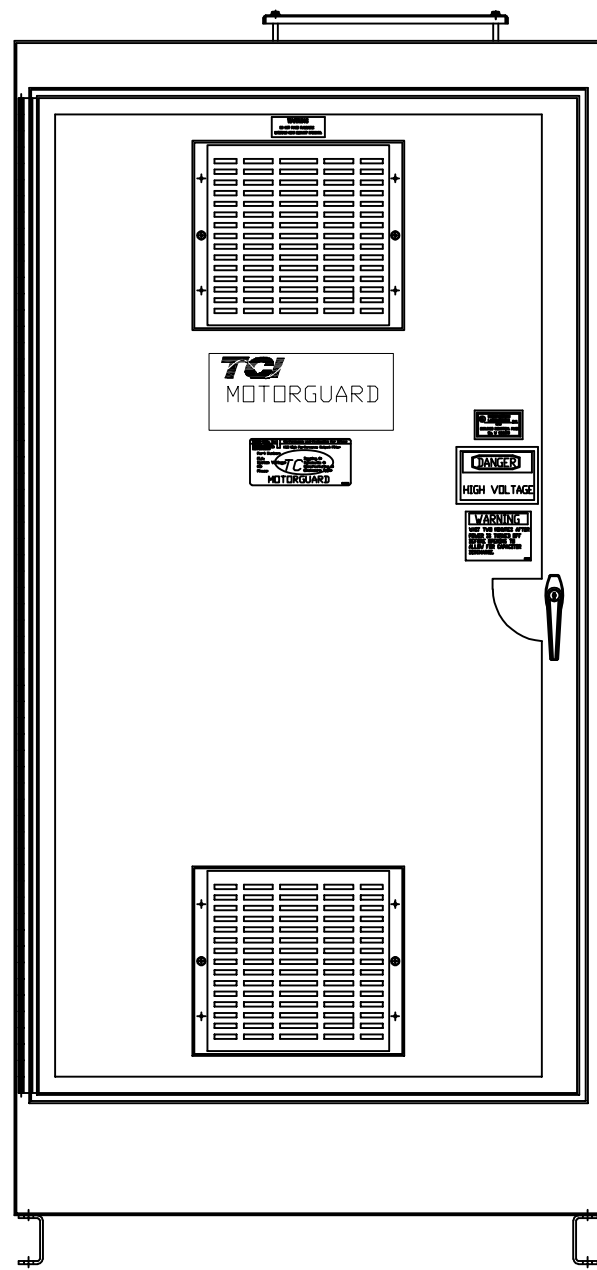
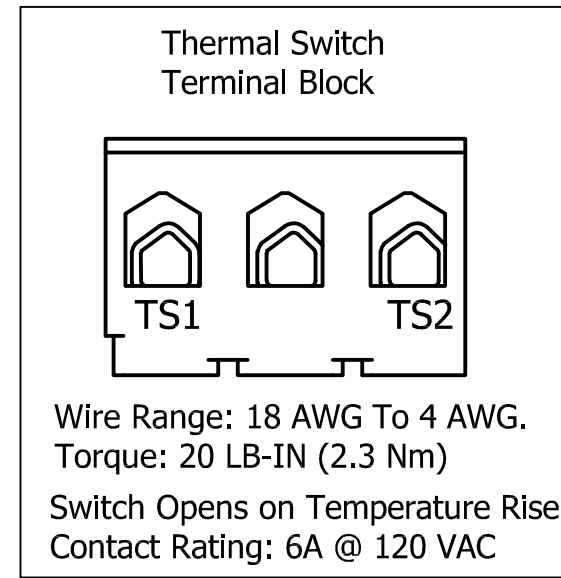
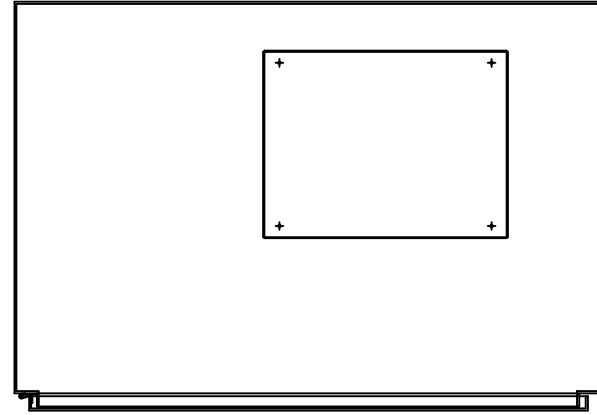


KMG750A01A
 APPROX WEIGHT: 1084LBS

FOR SCHEMATIC SEE DRAWING P/N 24281-3A

GROUND LUG
 WIRE RANGE: (2)800 MCM-300 MCM
 TORQUE: 500 LB-IN

LINE CONNECTIONS
 WIRE RANGE: (2)800 MCM-300 MCM
 TORQUE: 500 LB-IN



KMG HIGH PERFORMANCE OUTPUT FILTER
 PART NUMBER: KMG750A01A
 FLA: 750 DRAWING#: 104368DG
 SYSTEM VOLTAGE: 480 SCHEMATIC: 24281-3A
 HZ: 60
 PHASE: 3
 MOTORGUARD

CUSTOMER IS RESPONSIBLE FOR PROPER
 INSTALLATION OF ASSEMBLY IN ACCORDANCE
 WITH LOCAL AND NATIONAL CODES.

				TOLERANCES (EXCEPT AS NOTED)		7878 N. 86th STREET MILWAUKEE, WI 53224	
				DECIMAL			
				.XX ± .02		Standard, SineWave Filter ENCLOSED, 600HP, 750AMP, 480V	
				.XXX ± .01			
				FRACTIONAL		DRN BY DSW DATE 10/07/2010 DWG. NO. 104368DG SCALE TO FIT APRVD.	
				± 1/32			
5226 ADD THERMAL SWITCH TB 04/23/20 JRN				ANGULAR		SHT. 1 OF 1	
REVISION DATE BY				± 1/2°			