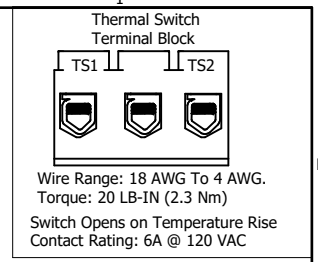
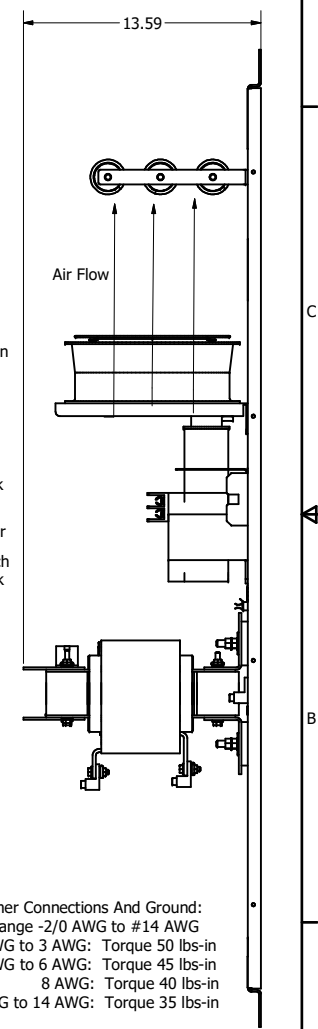
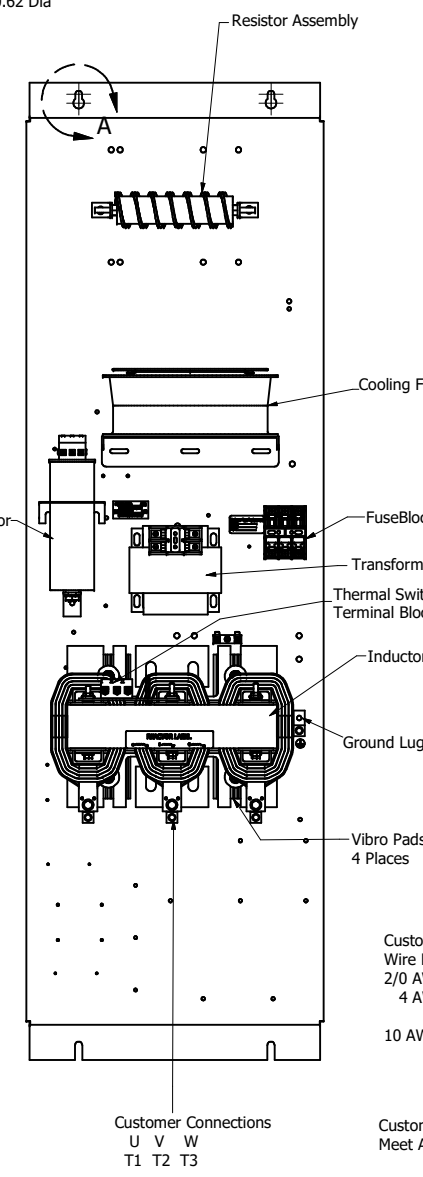
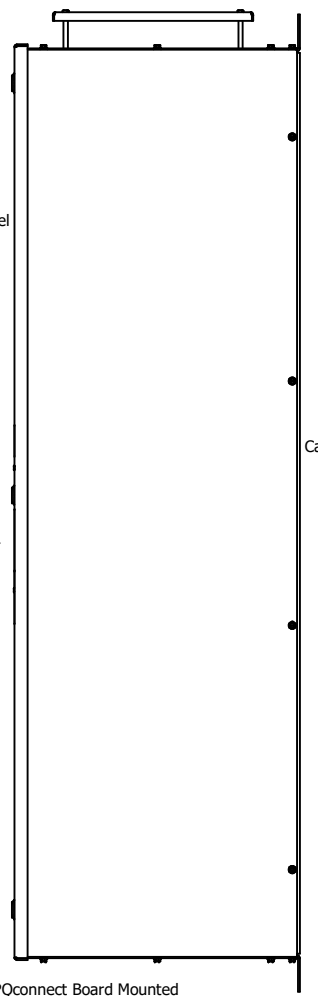
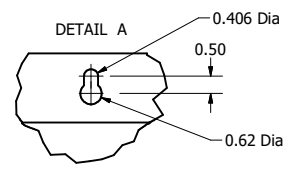
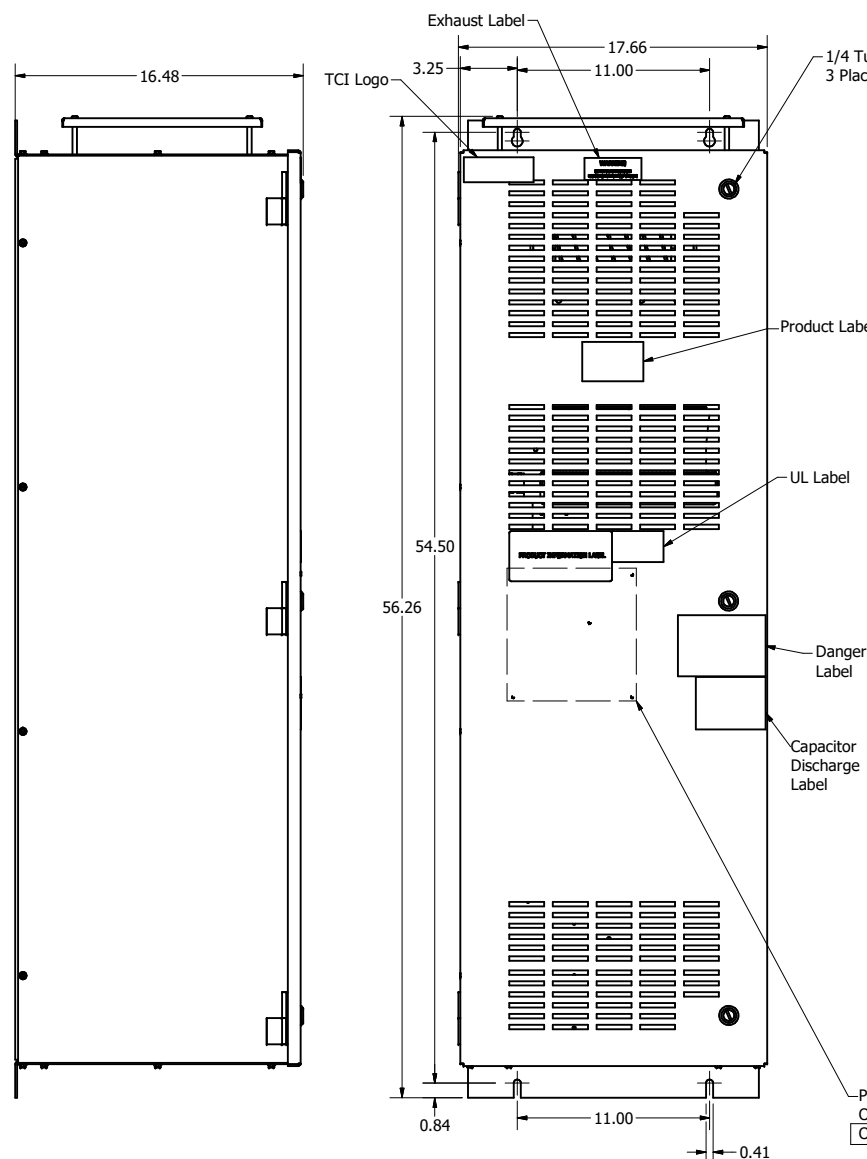


SineWave Part Number	Schematic Drawing#	Approx Weight (LBS)
KMG65C01A	24281-23A	263
KMG65C01P	24281-23P	264

HorsePower (HP)	kVar	Max Amps	Voltage (V)	HZ	Phase
60	5	65	600	60	3



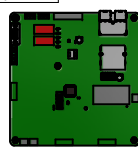
D  
C  
B  
A



Customer Connections And Ground:  
 Wire Range -2/0 AWG to #14 AWG  
 2/0 AWG to 3 AWG: Torque 50 lbs-in  
 4 AWG to 6 AWG: Torque 45 lbs-in  
 8 AWG: Torque 40 lbs-in  
 10 AWG to 14 AWG: Torque 35 lbs-in

Customer Is Responsible For Installation to Meet All National And Local Electrical Codes.

Material(s) Shall be RoHS Compliant



TCl, LLC CLAIMS PROPRIETARY RIGHTS IN THE MATERIAL HEREIN DISCLOSED. IT IS SUPPLIED WITHOUT PREJUDICE TO ANY PATENT RIGHTS OF TCl AND MAY NOT BE REPRODUCED OR USED TO MANUFACTURE ANYTHING SHOWN THEREIN WITHOUT WRITTEN PERMISSION FROM TCl.

ID	ADD PQconnect Board	9/21/2020	DSW
NO	REVISION	DATE	BY

TOLERANCES (EXCEPT AS NOTED)		W132 N10611 Grant Drive Germantown, WI 53022	
DECIMAL	.XX ± .25 .XXX ± .10		
FRACTIONAL	± 1/16		
ANGULAR	± 1°		KMG65C01-, SineWave Filter Enclosed Type 1, 60HP, 600V
DRN BY	DATE	10/14/2014	104443DG
SCALE	1/5.5	REVISED	DATE