

KMG65C00A

APPROX WEIGHT: 174LBS

KMG HIGH PERFORMANCE OUTPUT FILTER

PART NUMBER: KMG65C00A

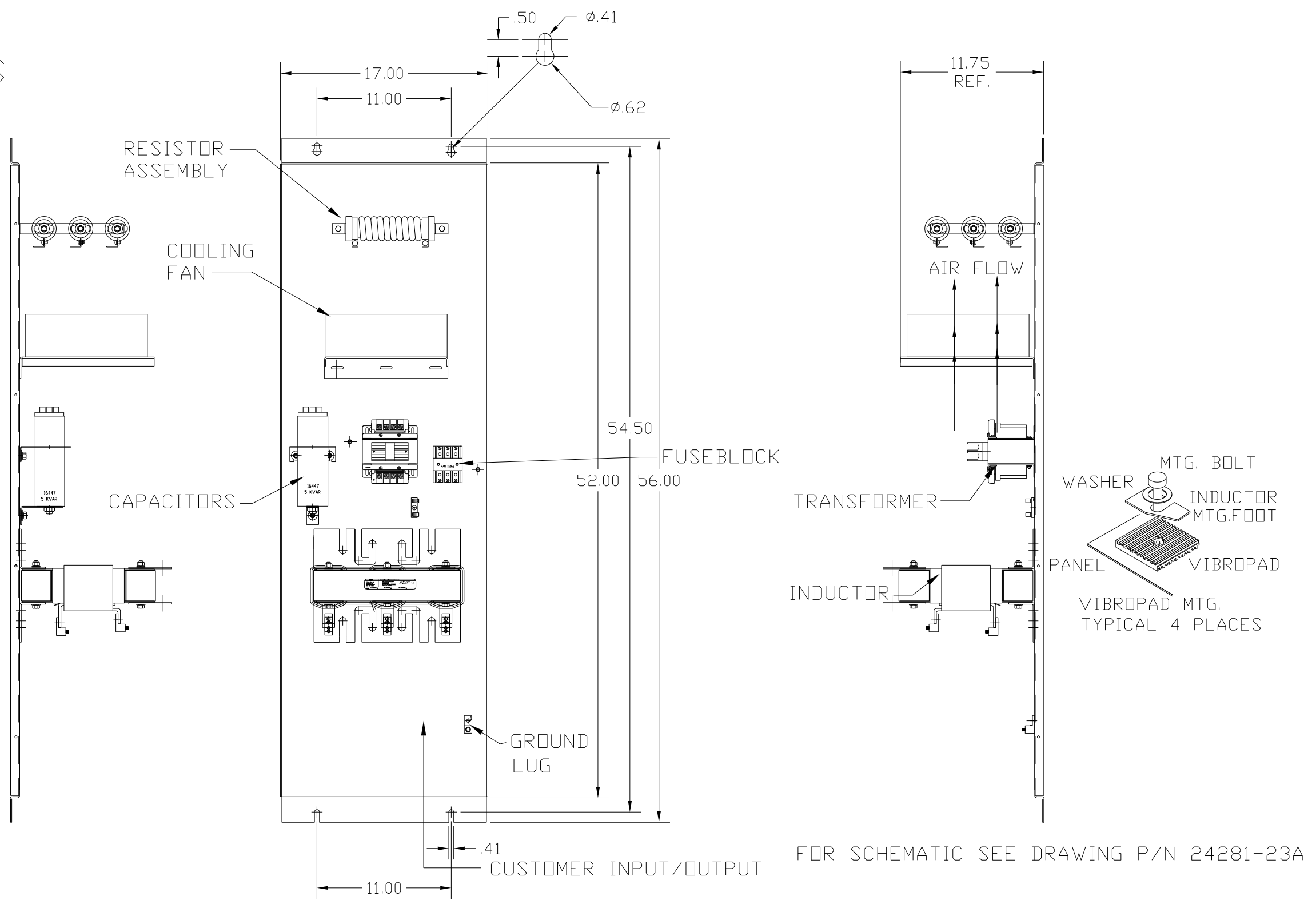
FLA: 65

SYSTEM VOLTAGE: 600

HZ: 80

PHASE: 3

MOTORGUARD



FOR SCHEMATIC SEE DRAWING P/N 24281-23A

GROUND LUG
 WIRE RANGE: 2/0-#6 AWG
 TORQUE: 120 LB-IN

LINE CONNECTIONS
 WIRE RANGE: 2/0-#6 AWG
 TORQUE: 120 LB-IN

CUSTOMER IS RESPONSIBLE FOR PROPER COOLING OF COMPONENTS IN CUSTOMERS ASSEMBLY

CUSTOMER IS RESPONSIBLE FOR PROPER INSTALLATION OF ASSEMBLY IN ACCORDANCE WITH LOCAL AND NATIONAL CODES.

NO	REVISION	DATE	BY	TOLERANCES (EXCEPT AS NOTED)
				DECIMAL
				.XX ± .02
				.XXX ± .01
				FRACTIONAL
				± 1/32
				ANGULAR
				± 1/2°

TCL 7878 N. 86th STREET
 MILWAUKEE, WI 53224

Standard, SineWave Filter
 Open, 60HP, 65AMP, 600V

DRN. BY DSW DATE 10/12/2010 DWG. NO. 104422DG
 SCALE TO FIT APRVD. B SHT. 1 of 1