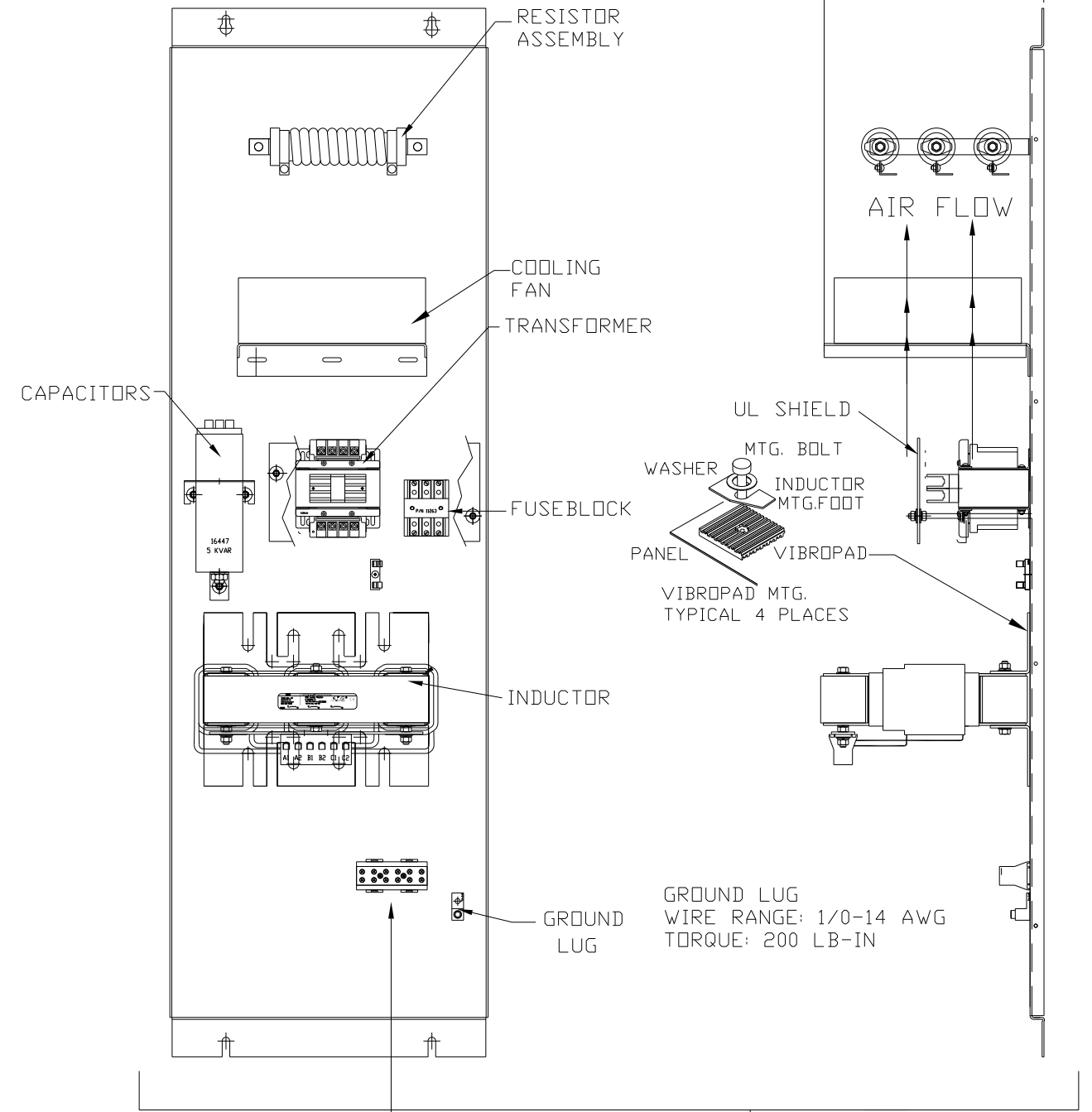
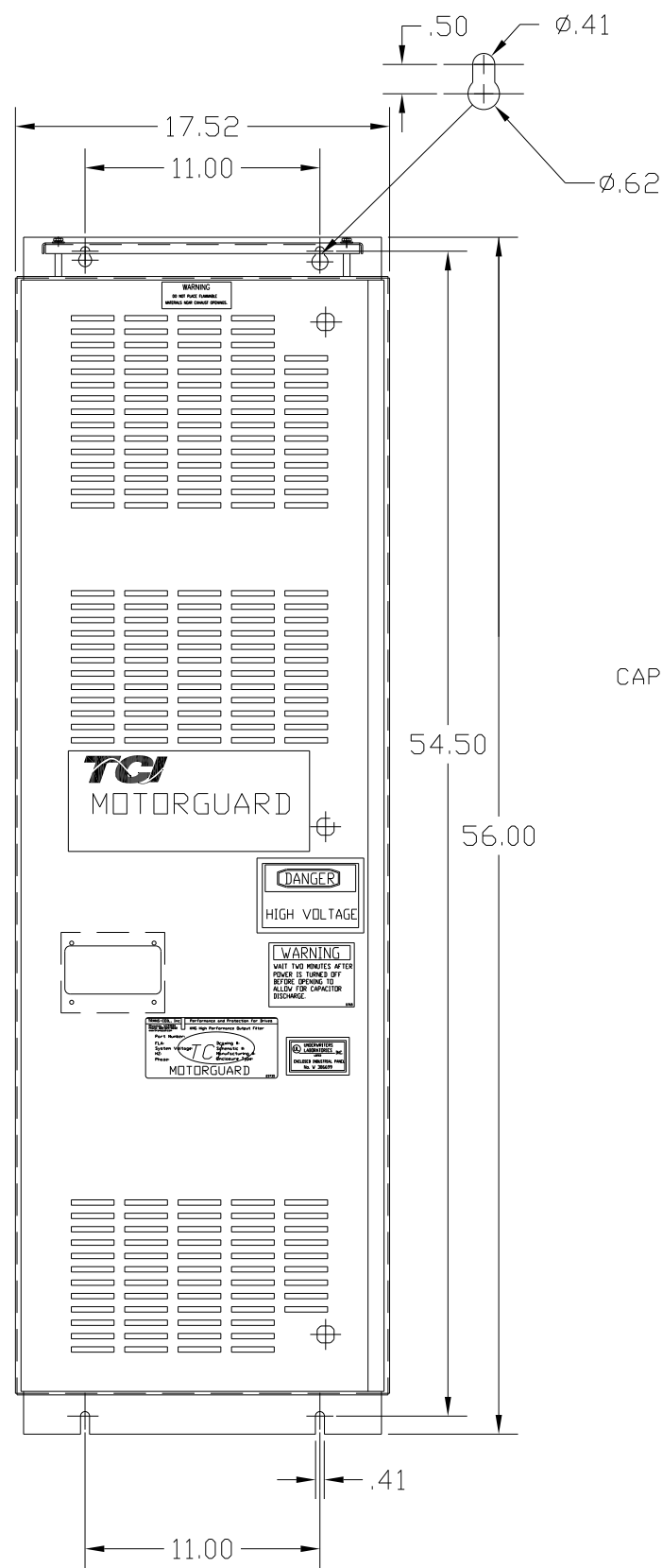
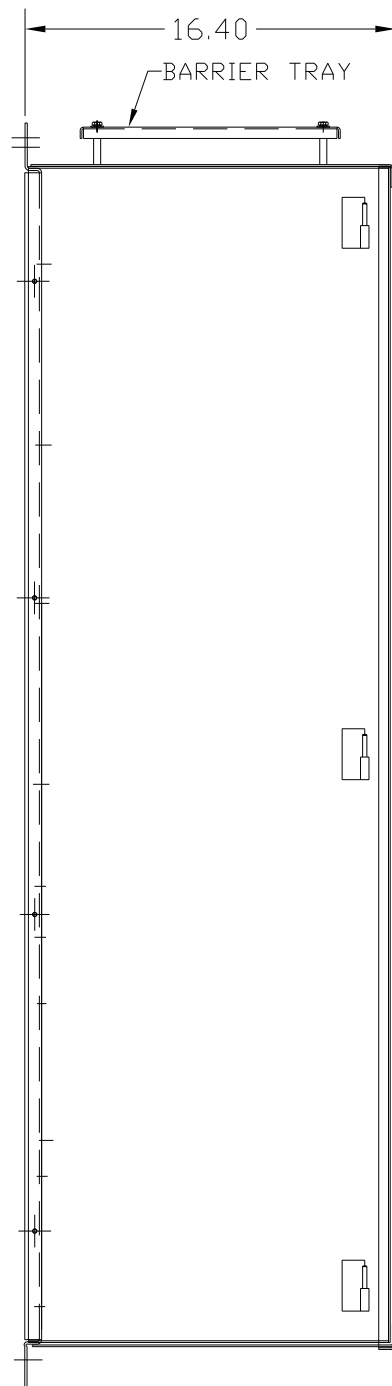


KMG55C01A

APPROX WEIGHT: 258LBS

FOR SCHEMATIC SEE DRAWING P/N 24281-21A



KMG HIGH PERFORMANCE OUTPUT FILTER

PART NUMBER: KMG55C01A

FLA: 55

SYSTEM VOLTAGE: 600

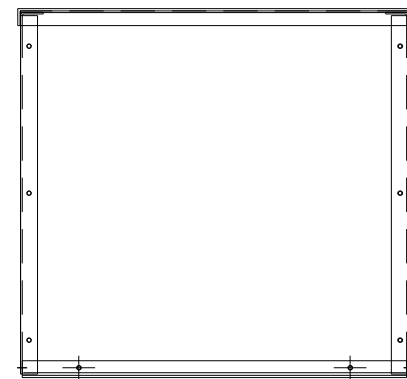
HZ: 80

PHASE: 3

DRAWING#: 104442DG

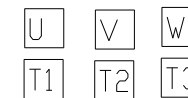
SCHEMATIC: 24281-21A

MOTORGUARD



SUGGESTED LOCATION FOR CUSTOMER INPUT/OUTPUT

CUSTOMER CONNECTIONS



ENCLOSURE NOT SHOWN

CUSTOMER CONNECTIONS
WIRE RANGE:

- 1 AWG THRU 4 AWG 35 IN-LB MAX.
- 6 AWG THRU 14 AWG 30 IN-LB MAX.
- 16 AWG THRU 22 AWG 25 IN-LB MAX.

CUSTOMER IS RESPONSIBLE FOR PROPER INSTALLATION OF ASSEMBLY IN ACCORDANCE WITH LOCAL AND NATIONAL CODES.

				TOLERANCES (EXCEPT AS NOTED)	7878 N. 86th STREET MILWAUKEE, WI 53224
				DECIMAL	
				.XX ± .02 .XXX ± .01	
				FRACTIONAL ± 1/32	
				ANGULAR ± 1/2°	Standard, SineWave Filter ENCLOSED, 50HP, 55AMP, 600V DRN. BY: DSW DATE: 10/14/2010 DWG. NO.: 104442DG SCALE: TO FIT APRVD: C
NO	REVISION	DATE	BY		SHT. 1 OF 1