

# KMG55C00A

APPROX WEIGHT: 159LBS

KMG HIGH PERFORMANCE OUTPUT FILTER

PART NUMBER: KMG55C00A

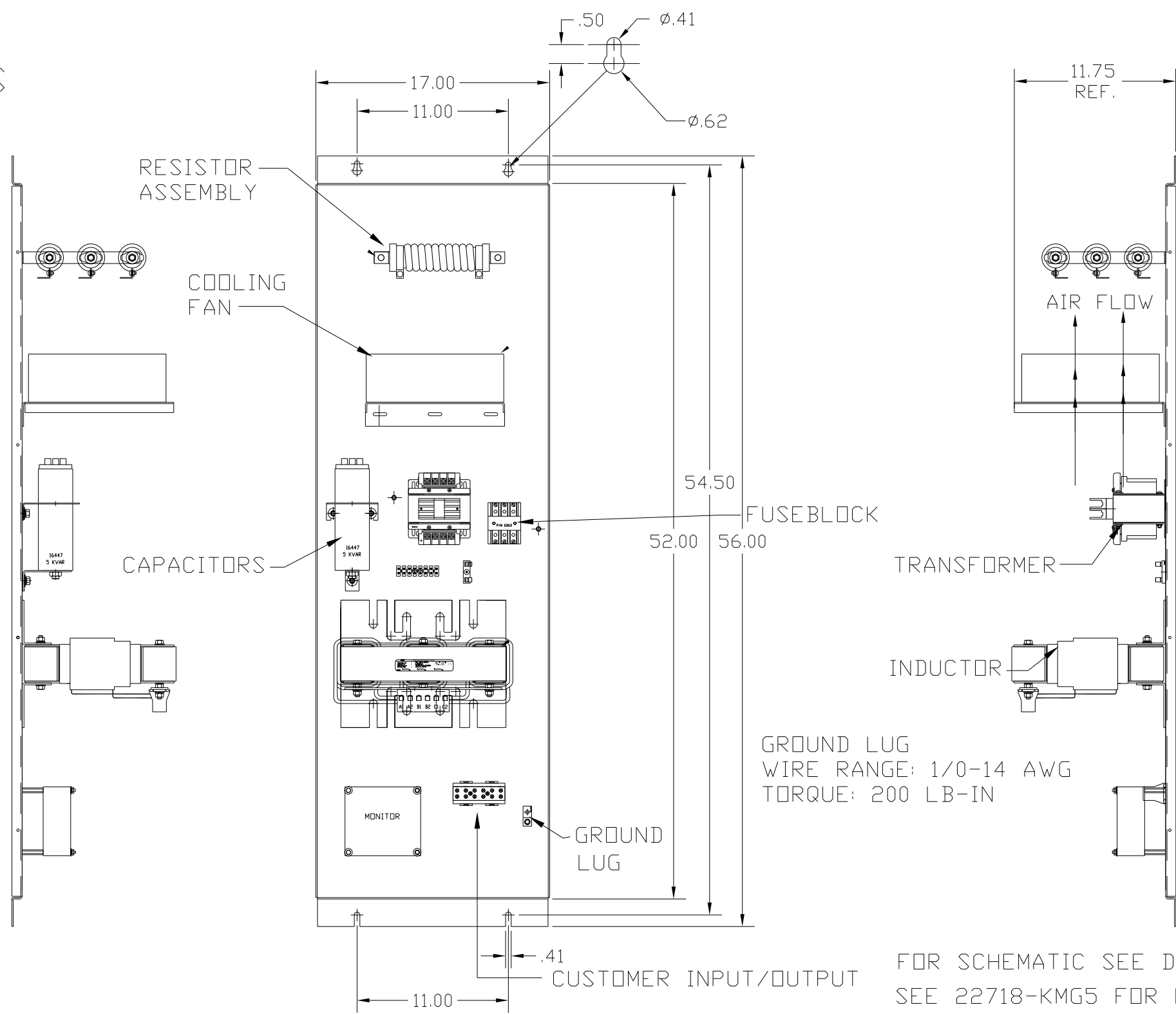
FLA: 55      DRAWING#: 104421DG

SYSTEM VOLTAGE: 600      SCHEMATIC: 24281-21A

HZ: 80

PHASE: 3

**MOTORGUARD**



GROUND LUG  
WIRE RANGE: 1/0-14 AWG  
TORQUE: 200 LB-IN

FOR SCHEMATIC SEE DRAWING P/N 24281-21A  
SEE 22718-KMG5 FOR LABEL MASTER SHEET.

CUSTOMER IS RESPONSIBLE FOR PROPER COOLING OF COMPONENTS IN CUSTOMERS ASSEMBLY

CUSTOMER IS RESPONSIBLE FOR PROPER INSTALLATION OF ASSEMBLY IN ACCORDANCE WITH LOCAL AND NATIONAL CODES.

CUSTOMER CONNECTIONS  
WIRE RANGE:

1 AWG THRU 4 AWG 35 IN-LB MAX.

6 AWG THRU 14 AWG 30 IN-LB MAX

16 AWG THRU 22 AWG 25 IN-LB MAX.

				TOLERANCES (EXCEPT AS NOTED)
				DECIMAL
				.XX ± .02
				.XXX ± .01
				FRACTIONAL
				± 1/32
				ANGULAR
				± 1/2°
NO	REVISION	DATE	BY	

**TCL** 7878 N. 86th STREET  
MILWAUKEE, WI 53224

Standard, SineWave Filter  
Open, 50HP, 55AMP, 600V

DRN. BY DSW	DATE 10/12/2010	DWG. NO. 104421DG
SCALE TO FIT	APRVD.	B

SHT. 1 of 1