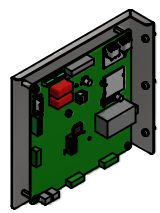
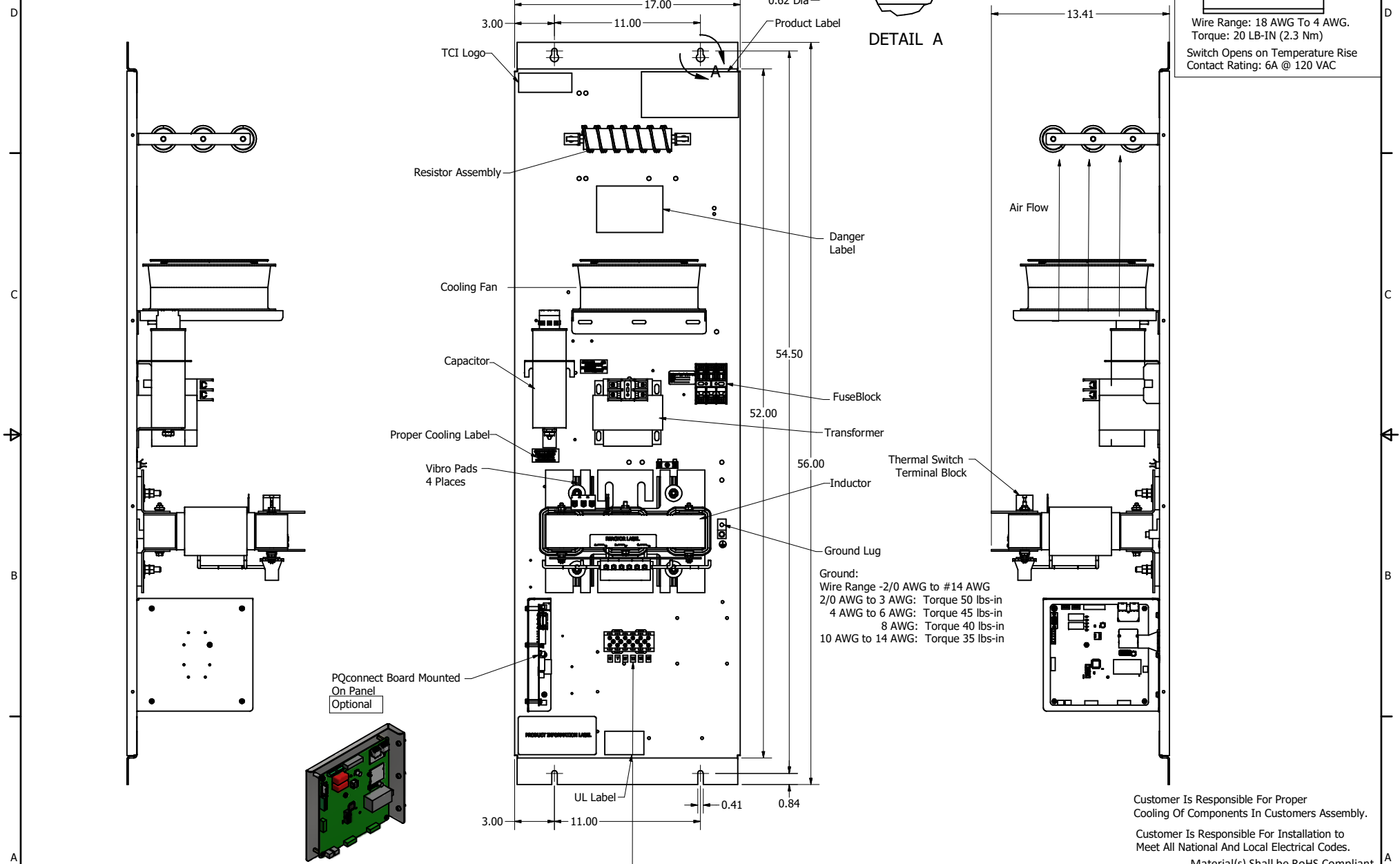
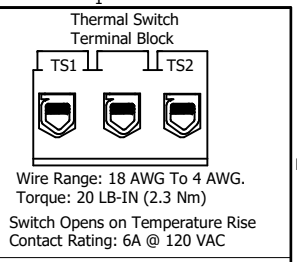
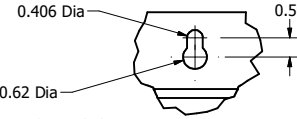
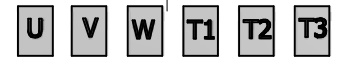


SineWave Part Number	Schematic Drawing#	Approx Weight (LBS)
KMG55C00A	24281-21A	160
KMG55C00P	24281-21P	165

HorsePower (HP)	kVar	Max Amps	Voltage (V)	HZ	Phase
50	5	55	600	60	3



Power Block Connections
 Wire Range -1 AWG to #22 AWG
 1 AWG to 4 AWG: Torque 35 lbs-in
 6 AWG to 14 AWG: Torque 30 lbs-in
 16 AWG to 20 AWG: Torque 25 lbs-in
 22 AWG: Torque 20 lbs-in



TCI, LLC CLAIMS PROPRIETARY RIGHTS IN THE MATERIAL HEREIN DISCLOSED. IT IS SUPPLIED WITHOUT PREJUDICE TO ANY PATENT RIGHTS OF TCI AND MAY NOT BE REPRODUCED OR USED TO MANUFACTURE ANYTHING SHOWN THEREIN WITHOUT WRITTEN PERMISSION FROM TCI.

NO	REVISION	DATE	BY	SCALE
B	Add PQconnect Board	9/23/2020	DSW	± 1/16
NO				± 1°

TOLERANCES (EXCEPT AS NOTED)		DATE		FILE	
DECIMAL	FRACTIONAL	DATE	BY	FILE	SCALE
.XX ± .25	± 1/16	10/12/2016	DSW	104421DG	1/5
.XXX ± .10					

Customer Is Responsible For Proper Cooling Of Components In Customers Assembly.

Customer Is Responsible For Installation to Meet All National And Local Electrical Codes.

Material(s) Shall be RoHS Compliant

TCI W132 N10611 Grant Drive
 Germantown, WI 53022

KMG55C00-, SineWave Filter
 Open Panel, 50HP, 600V

104421DG
 1/5